

Converting Colors

Hex(F09176)

Have a look what the booklet for
Hex(F09176) contains.

Hex(F09176)	3
<i>Conversions</i>	4
<i>Details</i>	6
<i>Harmonies</i>	11
<i>Previews</i>	23
<i>Color Blindness Simulation</i>	26
<i>CSS Examples</i>	29

Color

Hex(F09176)

Conversions

Conversions Part 1

Format	Color
Hex	F09176
RGB	240, 145, 118
RGB Percent	94%, 57%, 46%
CMY	0.0588, 0.4314, 0.5373
CMYK	0.00, 0.40, 0.51, 0.06
HSL	13°, 80%, 70%
HSV	13°, 51%, 94%
XYZ	49.3306, 40.0841, 22.2765
YIQ	170.3270, 65.2870, 11.7430

Conversions

Conversions Part 2

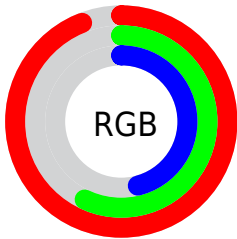
Format	Color
R _Y B	240, 153, 118
Decimal	15765878
CIE Lab	69.53, 33.16, 29.62
CIE LCh	70, 44.457, 41.771
Yxy	40.0841, 0.4417, 0.3589
Android (android.graphics.Color)	4293955958 (0xFFFF09176)
YUV	170.3270, -25.7972, 61.1032
Hunter-Lab	63.3120, 28.2853, 23.4570

Details

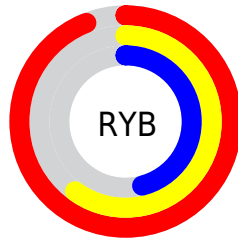
The Hex color **F09176** is a light color, and the websafe version is hex **FF9966**. A complement of this color would be **76D5F0**, and the grayscale version is **ABABAB**.

A 20% lighter version of the original color is **FFC8AA**, and **B45D45** is the 20% darker color. If you saturate the color by 10%, you get **F07E5E**, and if you desaturate by 10%, it is **F0A48E**.

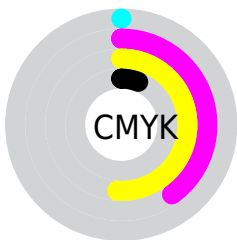
Distribution



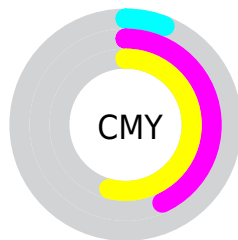
- Red (94%)
- Green (57%)
- Blue (46%)



- Red (94%)
- Yellow (60%)
- Blue (46%)



- Cyan (0%)
- Magenta (40%)
- Yellow (51%)
- Black (6%)



- Cyan (6%)
- Magenta (43%)
- Yellow (54%)

Brightness & Saturation Gradients

These gradients show how the Hex color F09176 changes by changing the brightness by 10 percent. The first figure shows a shift by +10% for each color and the second figure -10%.

Similar to the brightness gradients but the following saturation gradients show a change of the Hex color F09176 by changing the saturation by 10% instead.

 F09176

 F09176

FFFFFF

 D2775D

 FFC8AA

 B45D45

 FFE4C6

 97442E

 FFFFE2

 7B2C19

 5F1300

 430000

 2B0001

 000000

 F09176

 F09176

 F07E5E

 F0A48E

 F06C46

 F0B6A6

 F0592E

 F0C9BE

 F04616

 F0DCD6

 F03500

 F0EEEE

 F0FFFF

Harmonies

Analogous

The Analogous color harmony consists of three colors that are next to each other on the color wheel.



F7899B



F09176



D89F5D

Triad

The Triadic color harmony groups three colors that are evenly spaced from another and form a triangle on the color wheel.



F09176



50BD8F



86A9F9

Complementary

The Complementary color scheme is a pair of colors which are on the opposite of each other on the color wheel.



F09176



76D5F0

Split Complementary

Split-complementary colors differ from the complementary color scheme. The scheme consists of three colors, the original color and two neighbors of the complement color.



27B5F6



F09176



00BFB9

Square

The Square scheme is like the rectangle color scheme, but the four colors are evenly spaced on the color wheel.



F09176



87B76C



00BCDE



C299E6

Rectangle

The Rectangle color scheme consists of four colors that form a rectangle on the color wheel.



F09176



C1A858



00BCDE



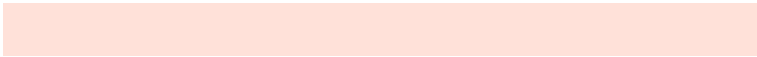
6DADFA

Sweetspot

The Sweet Spot groups the original color and five complimentary colors.



F09176



FFE1D9



F076D6



806E69



000000



808080

Same Dimension

The Same Dimension uses a secret algorithm to generate beautiful new colors.



F09176



FF8663



F0CD76



786F6C



B82900



380C00

Inverse Universe

The Inverse Universe completely reimagines the original color for something new.



76D5F0



63DDFF



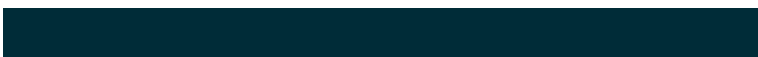
7699F0



6C7578



008FB8



002C38

Previews

White Background



This preview shows how the Hex color F09176 looks on a white background.

Color Contrast Check

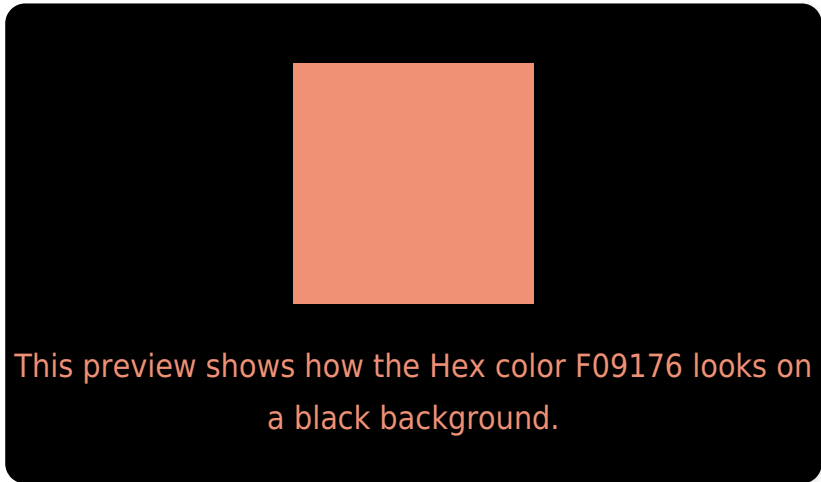
Large Text (above 18pt) WCAG AA × Fail

Any Text WCAG AA × Fail

Large Text (above 18pt) WCAG AAA × Fail

Any Text WCAG AAA × Fail

Black Background



Color Contrast Check

Large Text (above 18pt) WCAG AA ✓ Pass

Any Text WCAG AA ✓ Pass

Large Text (above 18pt) WCAG AAA ✓ Pass

Any Text WCAG AAA ✓ Pass

If you want to check with other color combinations, try the [Color Contrast Checker](#).

Hex F09176 Background



This preview shows how black text looks on a background with the Hex color F09176.

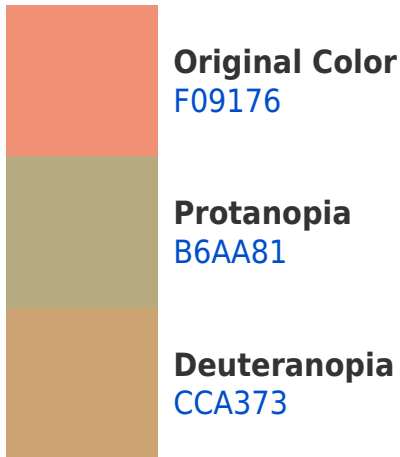


This preview shows how white text looks on a background with the Hex color F09176.

Color Blindness Simulation

Color vision deficiency is a very complex topic, and I could not describe the different causes any better than Wikipedia does, so if you want to learn more, you should check out their [article about color blindness](#).

Dichromacy



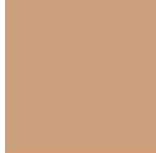


Tritanopia
F28C97

Trichromacy



Original Color
F09176



Protanomaly
CBA17D



Deuteranomaly
D99C74

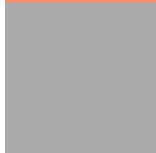


Tritanomaly
F18E8B

Monochromacy



Original Color
F09176



Achromatopsia
AAAAAA



Achromatomaly
C3A197

CSS Examples

Text

The CSS property to change the color of the text to Hex F09176 is called "color". The color property can be set on classes, ids or directly on the HTML element.

This example shows how text in the color #F09176 looks like.

```
.text, #text, p{  
    color:#F09176  
}
```

If you want to add a text shadow in that color use the text-shadow property, you can generate a text shadow directly with our [CSS Text Shadow Generator](#).

Here you see how black text with a 4 pixel #F09176 colored shadow looks like.

```
.shadow{ text-shadow: 4px 4px 2px #F09176
}
```

Border

The CSS property to change the border of an element to Hex F09176 is called "border". The border property can be set on classes, ids or directly on the HTML element.

This example shows the color as border, it can be applied via the CSS property "border" or "border-color".

```
.border, #border, table{ border:4px solid
#F09176 }
```

If only the border color should be changed use the property `border-color`.

```
.border{ border-color:#F09176 }
```

If you want to add a box shadow in that color use:

Here you see how a box with a 4 pixel #F09176 colored shadow looks like.

```
.boxshadow{ -moz-box-shadow:4px 4px 4px  
4px #F09176; -webkit-box-shadow:4px 4px  
4px 4px #F09176; box-shadow:4px 4px 4px  
4px #F09176 }
```

Background

The CSS property to change the background color of an element to Hex F09176 is called "background". The background property can be set on classes, ids or directly on the HTML element.

```
.background, #background, body{  
background:#F09176 }
```

If only the background color should be changed can be used:

```
.background{ background-color:#F09176 }
```

This example shows the color as background, it is applied via the CSS property "background".

To optimize and compress your CSS code, you can use our [online CSS compressor and optimizer](#) based on csstidy. If you want to create a linear or radial gradient as background or border, check our [CSS Gradient Generator](#).

Hey! You found this booklet interesting? Support Converting Colors with the new Membership Option!

The pro membership hides all ads, plus gives you double the colors in the color bucket, and more awesome pro features!

[Learn more, Memberships starting at \\$2.50/m!](#)

**Follow me
on Twitter!**

@ConvertingColor