

Converting Colors

Hex(F0BBDA)

Have a look what the booklet for
Hex(F0BBDA) contains.

Hex(F0BBDA)	3
<i>Conversions</i>	4
<i>Details</i>	6
<i>Harmonies</i>	11
<i>Previews</i>	23
<i>Color Blindness Simulation</i>	26
<i>CSS Examples</i>	29

Color

Hex(F0BBDA)

Conversions

Conversions Part 1

Format	Color
Hex	F0BBDA
RGB	240, 187, 218
RGB Percent	94%, 73%, 85%
CMY	0.0588, 0.2667, 0.1451
CMYK	0.00, 0.22, 0.09, 0.06
HSL	325°, 64%, 84%
HSV	325°, 22%, 94%
XYZ	66.3604, 59.1279, 74.2449
YIQ	206.3810, 21.6370, 20.8770

Conversions

Conversions Part 2

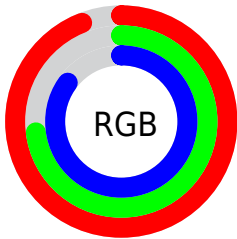
Format	Color
R _Y B	240, 187, 218
Decimal	15776730
CIE Lab	81.36, 23.90, -8.17
CIE LCh	81, 25.262, 341.132
Yxy	59.1279, 0.3322, 0.2960
Android (android.graphics.Color)	4293966810 (0xFFF0BBDA)
YUV	206.3810, 5.7282, 29.4839
Hunter-Lab	76.8946, 19.4806, -3.4207

Details

The Hex color **F0BBDA** is a light color, and the websafe version is hex **FFCCFF**. A complement of this color would be **BBF0D1**, and the grayscale version is **CECECE**.

A 20% lighter version of the original color is **FFF3FF**, and **B785A3** is the 20% darker color. If you saturate the color by 10%, you get **F0A3D0**, and if you desaturate by 10%, it is **F0D3E4**.

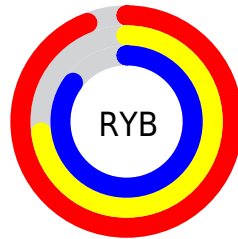
Distribution



Red (94%)

Green (73%)

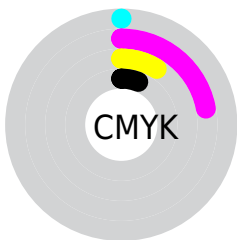
Blue (85%)



Red (94%)

Yellow (73%)

Blue (85%)

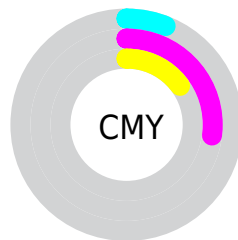


Cyan (0%)

Magenta (22%)

Yellow (9%)

Black (6%)



Cyan (6%)

Magenta (27%)

Yellow (15%)

Brightness & Saturation Gradients

These gradients show how the Hex color F0BBDA changes by changing the brightness by 10 percent. The first figure shows a shift by +10% for each color and the second figure -10%.

Similar to the brightness gradients but the following saturation gradients show a change of the Hex color F0BBDA by changing the saturation by 10% instead.

 F0BBDA

 F0BBDA

FFFFFF

 D3A0BE

 FFF3FF

 B785A3

 9C6C89

 82536F

 683B57

 4F2540

 370E2A

 240016

 000000

 F0BBDA

 F0BBDA

 F0A3D0

 F0D3E4

 F08BC6

 F0EBEE

 F073BC

 F0FFF8

 F05BB2

 F0FFFF

 F043A8

 F02B9E

 F01394

 F0008C

Harmonies

Analogous

The Analogous color harmony consists of three colors that are next to each other on the color wheel.



D9C1EE



F0BBDA



FBB9C2

Triad

The Triadic color harmony groups three colors that are evenly spaced from another and form a triangle on the color wheel.



F0BBDA



D3CB9C



89D6E8

Complementary

The Complementary color scheme is a pair of colors which are on the opposite of each other on the color wheel.



F0BBDA



BBF0D1

Split Complementary

Split-complementary colors differ from the complementary color scheme. The scheme consists of three colors, the original color and two neighbors of the complement color.



8BD8D2



F0BBDA



B8D2A6

Square

The Square scheme is like the rectangle color scheme, but the four colors are evenly spaced on the color wheel.



F0BBDA



E9C49E



9ED6BA



9BD1F6

Rectangle

The Rectangle color scheme consists of four colors that form a rectangle on the color wheel.



F0BBDA



FABBB3



9ED6BA



87D7E2

Sweetspot

The Sweet Spot groups the original color and five complimentary colors.



F0BBDA



FFEDF8



D0BBF0



80757B



000000



808080

Same Dimension

The Same Dimension uses a secret algorithm to generate beautiful new colors.



F0BBDA



FFBAE2



F0BBC0



786C73



B8006B



380021

Inverse Universe

The Inverse Universe completely reimagines the original color for something new.



F0BBDA



FFBAE2



BBF0EB



786C73



B8006B



380021

Previews

White Background



This preview shows how the Hex color F0BBDA looks on a white background.

Color Contrast Check

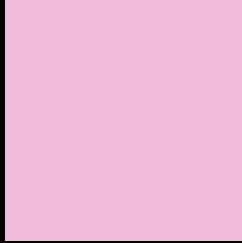
Large Text (above 18pt) WCAG AA × Fail

Any Text WCAG AA × Fail

Large Text (above 18pt) WCAG AAA × Fail

Any Text WCAG AAA × Fail

Black Background



This preview shows how the Hex color F0BBDA looks on a black background.

Color Contrast Check

Large Text (above 18pt) WCAG AA ✓ Pass

Any Text WCAG AA ✓ Pass

Large Text (above 18pt) WCAG AAA ✓ Pass

Any Text WCAG AAA ✓ Pass

If you want to check with other color combinations, try the [Color Contrast Checker](#).

Hex F0BBDA Background



This preview shows how black text looks on a background with the Hex color F0BBDA.

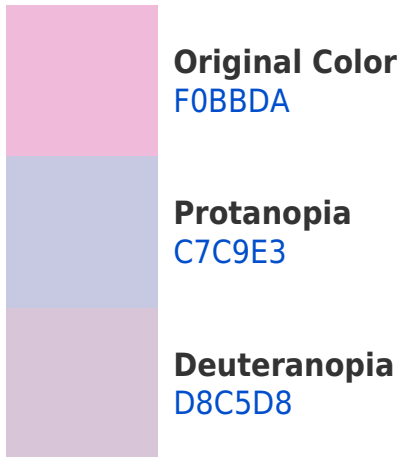


This preview shows how white text looks on a background with the Hex color F0BBDA.

Color Blindness Simulation

Color vision deficiency is a very complex topic, and I could not describe the different causes any better than Wikipedia does, so if you want to learn more, you should check out their [article about color blindness](#).

Dichromacy



Trichromacy



Original Color
F0BBDA



Protanomaly
D6C4E0



Deuteranomaly
E1C1D9

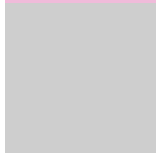


Tritanomaly
EFBCD1

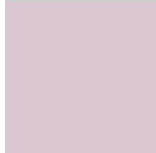
Monochromacy



Original Color
F0BBDA



Achromatopsia
CECECE



Achromatomaly
DAC7D2

CSS Examples

Text

The CSS property to change the color of the text to Hex F0BBDA is called "color". The color property can be set on classes, ids or directly on the HTML element.

This example shows how text in the color #F0BBDA looks like.

```
.text, #text, p{  
    color:#F0BBDA  
}
```

If you want to add a text shadow in that color use the text-shadow property, you can generate a text shadow directly with our [CSS Text Shadow Generator](#).

Here you see how black text with a 4 pixel #F0BBDA colored shadow looks like.

```
.shadow{ text-shadow: 4px 4px 2px #F0BBDA
}
```

Border

The CSS property to change the border of an element to Hex F0BBDA is called "border". The border property can be set on classes, ids or directly on the HTML element.

This example shows the color as border, it can be applied via the CSS property "border" or "border-color".

```
.border, #border, table{ border:4px solid
#F0BBDA }
```

If only the border color should be changed use the property `border-color`.

```
.border{ border-color:#F0BBDA }
```

If you want to add a box shadow in that color use:

Here you see how a box with a 4 pixel #F0BBDA colored shadow looks like.

```
.boxshadow{ -moz-box-shadow:4px 4px 4px  
4px #F0BBDA; -webkit-box-shadow:4px 4px  
4px 4px #F0BBDA; box-shadow:4px 4px 4px  
4px #F0BBDA }
```

Background

The CSS property to change the background color of an element to Hex F0BBDA is called "background". The background property can be set on classes, ids or directly on the HTML element.

```
.background, #background, body{  
background:#F0BBDA }
```

If only the background color should be changed can be used:

```
.background{ background-color:#F0BBDA }
```

This example shows the color as background, it is applied via the CSS property "background".

To optimize and compress your CSS code, you can use our [online CSS compressor and optimizer](#) based on csstidy. If you want to create a linear or radial gradient as background or border, check our [CSS Gradient Generator](#).

Hey! You found this booklet interesting? Support Converting Colors with the new Membership Option!

The pro membership hides all ads, plus gives you double the colors in the color bucket, and more awesome pro features!

[Learn more, Memberships starting at \\$2.50/m!](#)

**Follow me
on Twitter!**

@ConvertingColor