

Converting Colors

Hex(F0BBE2)

Have a look what the booklet for
Hex(F0BBE2) contains.

Hex(F0BBE2)	3
<i>Conversions</i>	4
<i>Details</i>	6
<i>Harmonies</i>	11
<i>Previews</i>	23
<i>Color Blindness Simulation</i>	26
<i>CSS Examples</i>	29

Color

Hex(F0BBE2)

Conversions

Conversions Part 1

Format	Color
Hex	F0BBE2
RGB	240, 187, 226
RGB Percent	94%, 73%, 89%
CMY	0.0588, 0.2667, 0.1137
CMYK	0.00, 0.22, 0.06, 0.06
HSL	316°, 64%, 84%
HSV	316°, 22%, 94%
XYZ	67.4330, 59.5569, 79.8930
YIQ	207.2930, 19.0690, 23.3650

Conversions

Conversions Part 2

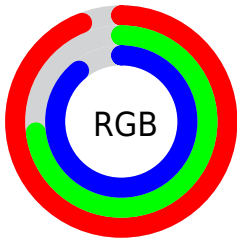
Format	Color
R _Y B	240, 187, 226
Decimal	15776738
CIE Lab	81.60, 25.27, -12.12
CIE LCh	82, 28.026, 334.376
Yxy	59.5569, 0.3259, 0.2879
Android (android.graphics.Color)	4293966818 (0xFFFF0BBE2)
YUV	207.2930, 9.2226, 28.6840
Hunter-Lab	77.1731, 20.9183, -7.3585

Details

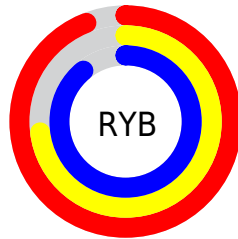
The Hex color **F0BBE2** is a light color, and the websafe version is hex **FFCCFF**. A complement of this color would be **BBF0C9**, and the grayscale version is **CFCFCF**.

A 20% lighter version of the original color is **FFF3FF**, and **B785AB** is the 20% darker color. If you saturate the color by 10%, you get **F0A3DC**, and if you desaturate by 10%, it is **F0D3E8**.

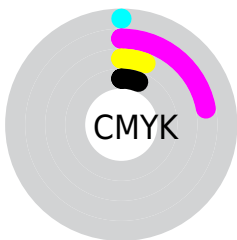
Distribution



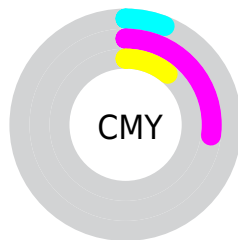
- Red (94%)
- Green (73%)
- Blue (89%)



- Red (94%)
- Yellow (73%)
- Blue (89%)



- Cyan (0%)
- Magenta (22%)
- Yellow (6%)
- Black (6%)



- Cyan (6%)
- Magenta (27%)
- Yellow (11%)

Brightness & Saturation Gradients

These gradients show how the Hex color F0BBE2 changes by changing the brightness by 10 percent. The first figure shows a shift by +10% for each color and the second figure -10%.

Similar to the brightness gradients but the following saturation gradients show a change of the Hex color F0BBE2 by changing the saturation by 10% instead.

 F0BBE2

 F0BBE2

FFFFFF

 D3A0C6

 FFF3FF

 B785AB

 9C6C90

 825376

 683B5E

 4F2446

 370E30

 24001B

 000000

 F0BBE2

 F0BBE2

 F0A3DC

 F0D3E8

 F08BD5

 F0EBEF

 F073CF

 F0FFF5

 F05BC9

 F0FFFB

 F043C2

 F0FFFF

 F02BBC

 F013B6

 F000B1

Harmonies

Analogous

The Analogous color harmony consists of three colors that are next to each other on the color wheel.



D4C3F6



F0BBE2



FFB8C8

Triad

The Triadic color harmony groups three colors that are evenly spaced from another and form a triangle on the color wheel.



F0BBE2



DACA96



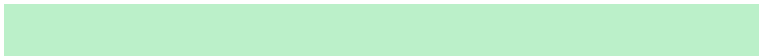
7ED8E7

Complementary

The Complementary color scheme is a pair of colors which are on the opposite of each other on the color wheel.



F0BBE2



BBF0C9

Split Complementary

Split-complementary colors differ from the complementary color scheme. The scheme consists of three colors, the original color and two neighbors of the complement color.



87DACE



F0BBE2



BED29F

Square

The Square scheme is like the rectangle color scheme, but the four colors are evenly spaced on the color wheel.



F0BBE2



F1C29C



A0D8B3



8FD4F9

Rectangle

The Rectangle color scheme consists of four colors that form a rectangle on the color wheel.



F0BBE2



FFB9B6



A0D8B3



7ED9DF

Sweetspot

The Sweet Spot groups the original color and five complimentary colors.



F0BBE2



FFEDFA



C8BBF0



80757D



000000



808080

Same Dimension

The Same Dimension uses a secret algorithm to generate beautiful new colors.



F0BBE2



FFBAED



F0BBC8



786C75



B80087



380029

Inverse Universe

The Inverse Universe completely reimagines the original color for something new.



F0BBE2



FFBAED



BBF0E3



786C75



B80087



380029

Previews

White Background



This preview shows how the Hex color F0BBE2 looks on a white background.

Color Contrast Check

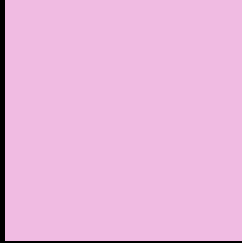
Large Text (above 18pt) WCAG AA × Fail

Any Text WCAG AA × Fail

Large Text (above 18pt) WCAG AAA × Fail

Any Text WCAG AAA × Fail

Black Background



This preview shows how the Hex color F0BBE2 looks on a black background.

Color Contrast Check

Large Text (above 18pt) WCAG AA ✓ Pass

Any Text WCAG AA ✓ Pass

Large Text (above 18pt) WCAG AAA ✓ Pass

Any Text WCAG AAA ✓ Pass

If you want to check with other color combinations, try the [Color Contrast Checker](#).

Hex F0BBE2 Background



This preview shows how black text looks on a background with the Hex color F0BBE2.

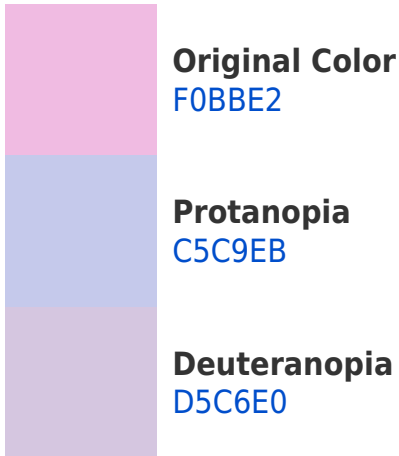


This preview shows how white text looks on a background with the Hex color F0BBE2.

Color Blindness Simulation

Color vision deficiency is a very complex topic, and I could not describe the different causes any better than Wikipedia does, so if you want to learn more, you should check out their [article about color blindness](#).

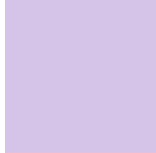
Dichromacy



Trichromacy



Original Color
F0BBE2



Protanomaly
D5C4E8



Deuteranomaly
DFC2E1

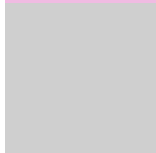


Tritanomaly
EEBED5

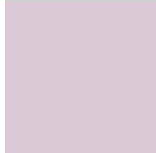
Monochromacy



Original Color
F0BBE2



Achromatopsia
CFCFCF



Achromatomaly
DBC8D6

CSS Examples

Text

The CSS property to change the color of the text to Hex F0BBE2 is called "color". The color property can be set on classes, ids or directly on the HTML element.

This example shows how text in the color #F0BBE2 looks like.

```
.text, #text, p{  
    color:#F0BBE2  
}
```

If you want to add a text shadow in that color use the text-shadow property, you can generate a text shadow directly with our [CSS Text Shadow Generator](#).

Here you see how black text with a 4 pixel #F0BBE2 colored shadow looks like.

```
.shadow{ text-shadow: 4px 4px 2px #F0BBE2
}
```

Border

The CSS property to change the border of an element to Hex F0BBE2 is called "border". The border property can be set on classes, ids or directly on the HTML element.

This example shows the color as border, it can be applied via the CSS property "border" or "border-color".

```
.border, #border, table{ border:4px solid
#F0BBE2 }
```

If only the border color should be changed use the property `border-color`.

```
.border{ border-color:#F0BBE2 }
```

If you want to add a box shadow in that color use:

Here you see how a box with a 4 pixel #F0BBE2 colored shadow looks like.

```
.boxshadow{ -moz-box-shadow:4px 4px 4px  
4px #F0BBE2; -webkit-box-shadow:4px 4px  
4px 4px #F0BBE2; box-shadow:4px 4px 4px  
4px #F0BBE2 }
```

Background

The CSS property to change the background color of an element to Hex F0BBE2 is called "background". The background property can be set on classes, ids or directly on the HTML element.

```
.background, #background, body{  
background:#F0BBE2 }
```

If only the background color should be changed can be used:

```
.background{ background-color:#F0BBE2 }
```

This example shows the color as background, it is applied via the CSS property "background".

To optimize and compress your CSS code, you can use our [online CSS compressor and optimizer](#) based on csstidy. If you want to create a linear or radial gradient as background or border, check our [CSS Gradient Generator](#).

Hey! You found this booklet interesting? Support Converting Colors with the new Membership Option!

The pro membership hides all ads, plus gives you double the colors in the color bucket, and more awesome pro features!

[Learn more, Memberships starting at \\$2.50/m!](#)

**Follow me
on Twitter!**

@ConvertingColor