

Converting Colors

Hex(F0C0F0)

Have a look what the booklet for
Hex(F0C0F0) contains.

Hex(F0C0F0)	3
<i>Conversions</i>	4
<i>Details</i>	6
<i>Harmonies</i>	11
<i>Previews</i>	23
<i>Color Blindness Simulation</i>	26
<i>CSS Examples</i>	29

Color

Hex(F0C0F0)

Conversions

Conversions Part 1

Format	Color
Hex	F0C0F0
RGB	240, 192, 240
RGB Percent	94%, 75%, 94%
CMY	0.0588, 0.2471, 0.0588
CMYK	0.00, 0.20, 0.00, 0.06
HSL	300°, 62%, 85%
HSV	300°, 20%, 94%
XYZ	70.5130, 62.5158, 90.7884
YIQ	211.8240, 13.2000, 25.1040

Conversions

Conversions Part 2

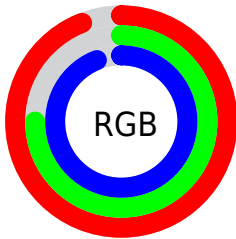
Format	Color
R _Y B	240, 192, 240
Decimal	15778032
CIE Lab	83.19, 25.10, -17.23
CIE LCh	83, 30.449, 325.534
Yxy	62.5158, 0.3150, 0.2793
Android (android.graphics.Color)	4293968112 (0xFFFF0C0F0)
YUV	211.8240, 13.8908, 24.7104
Hunter-Lab	79.0669, 20.8216, -12.7327

Details

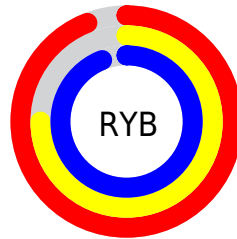
The Hex color **F0C0F0** is a light color, and the websafe version is hex **FFCCFF**. A complement of this color would be **C0F0C0**, and the grayscale version is **D4D4D4**.

A 20% lighter version of the original color is **FFF9FF**, and **B88AB8** is the 20% darker color. If you saturate the color by 10%, you get **F0A8F0**, and if you desaturate by 10%, it is **F0D8F0**.

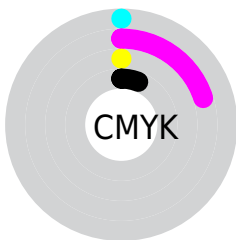
Distribution



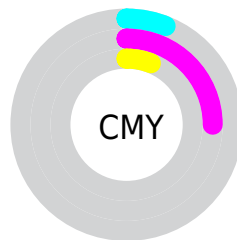
- Red (94%)
- Green (75%)
- Blue (94%)



- Red (94%)
- Yellow (75%)
- Blue (94%)



- Cyan (0%)
- Magenta (20%)
- Yellow (0%)
- Black (6%)



- Cyan (6%)
- Magenta (25%)
- Yellow (6%)

Brightness & Saturation Gradients

These gradients show how the Hex color F0C0F0 changes by changing the brightness by 10 percent. The first figure shows a shift by +10% for each color and the second figure -10%.

Similar to the brightness gradients but the following saturation gradients show a change of the Hex color F0C0F0 by changing the saturation by 10% instead.

 F0C0F0

FFFFFF

 FFF9FF

 F0C0F0

 D3A5D4

 B88AB8

 9C709D

 825883

 68406A

 502951

 38133A

 230025

 00010D

 F0C0F0

 F0C0F0

 F0A8F0

 F0D8F0

 F090F0

 F0F0F0

 F078F0

 F0FFFF

 F060F0

 F048F0

 F030F0

 F018F0

 F000F0

Harmonies

Analogous

The Analogous color harmony consists of three colors that are next to each other on the color wheel.



CEC9FF



F0C0F0



FFBBD5

Triad

The Triadic color harmony groups three colors that are evenly spaced from another and form a triangle on the color wheel.



F0C0F0



E8CC96



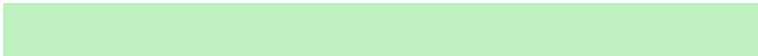
7ADFE7

Complementary

The Complementary color scheme is a pair of colors which are on the opposite of each other on the color wheel.



F0C0F0



C0F0C0

Split Complementary

Split-complementary colors differ from the complementary color scheme. The scheme consists of three colors, the original color and two neighbors of the complement color.



8BDFCA



F0C0F0



CAD59B

Square

The Square scheme is like the rectangle color scheme, but the four colors are evenly spaced on the color wheel.



F0C0F0



FFC2A1



A9DCAE



84DBFE

Rectangle

The Rectangle color scheme consists of four colors that form a rectangle on the color wheel.



F0C0F0



FFBBC1



A9DCAE



7DDFDD

Sweetspot

The Sweet Spot groups the original color and five complimentary colors.



FOC0F0



FFF0FF



C0C0F0



807780



000000



808080

Same Dimension

The Same Dimension uses a secret algorithm to generate beautiful new colors.



F0C0F0



FFC2FF



F0C0D8



786C78



B800B8



380038

Inverse Universe

The Inverse Universe completely reimagines the original color for something new.



F0C0F0



FFC2FF



C0F0D8



786C78



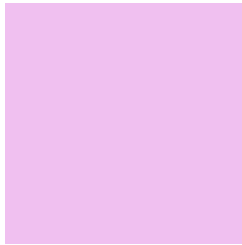
B800B8



380038

Previews

White Background



This preview shows how the Hex color F0C0F0 looks on a white background.

Color Contrast Check

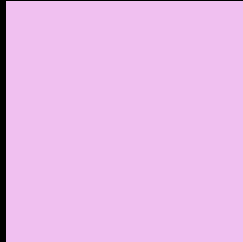
Large Text (above 18pt) WCAG AA × Fail

Any Text WCAG AA × Fail

Large Text (above 18pt) WCAG AAA × Fail

Any Text WCAG AAA × Fail

Black Background



This preview shows how the Hex color F0C0F0 looks on a black background.

Color Contrast Check

Large Text (above 18pt) WCAG AA ✓ Pass

Any Text WCAG AA ✓ Pass

Large Text (above 18pt) WCAG AAA ✓ Pass

Any Text WCAG AAA ✓ Pass

If you want to check with other color combinations, try the [Color Contrast Checker](#).

Hex F0C0F0 Background



This preview shows how black text looks on a background with the Hex color F0C0F0.

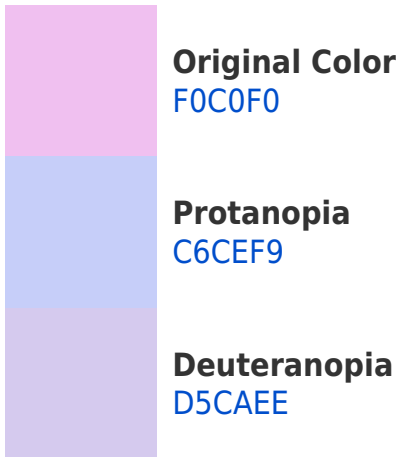


This preview shows how white text looks on a background with the Hex color F0C0F0.

Color Blindness Simulation

Color vision deficiency is a very complex topic, and I could not describe the different causes any better than Wikipedia does, so if you want to learn more, you should check out their [article about color blindness](#).

Dichromacy



Trichromacy



Original Color
F0C0F0



Protanomaly
D5C9F6



Deuteranomaly
DFC6EF

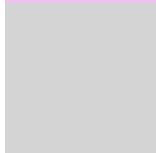


Tritanomaly
EDC3DE

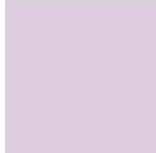
Monochromacy



Original Color
F0C0F0



Achromatopsia
D4D4D4



Achromatomaly
DECDDE

CSS Examples

Text

The CSS property to change the color of the text to Hex F0C0F0 is called "color". The color property can be set on classes, ids or directly on the HTML element.

This example shows how text in the color #F0C0F0 looks like.

```
.text, #text, p{  
    color:#F0C0F0  
}
```

If you want to add a text shadow in that color use the text-shadow property, you can generate a text shadow directly with our [CSS Text Shadow Generator](#).

Here you see how black text with a 4 pixel #F0C0F0 colored shadow looks like.

```
.shadow{ text-shadow: 4px 4px 2px #F0C0F0
}
```

Border

The CSS property to change the border of an element to Hex F0C0F0 is called "border". The border property can be set on classes, ids or directly on the HTML element.

This example shows the color as border, it can be applied via the CSS property "border" or "border-color".

```
.border, #border, table{ border:4px solid
#F0C0F0 }
```

If only the border color should be changed use the property `border-color`.

```
.border{ border-color:#F0C0F0 }
```

If you want to add a box shadow in that color use:

Here you see how a box with a 4 pixel #F0C0F0 colored shadow looks like.

```
.boxshadow{ -moz-box-shadow:4px 4px 4px  
4px #F0C0F0; -webkit-box-shadow:4px 4px  
4px 4px #F0C0F0; box-shadow:4px 4px 4px  
4px #F0C0F0 }
```

Background

The CSS property to change the background color of an element to Hex F0C0F0 is called "background". The background property can be set on classes, ids or directly on the HTML element.

```
.background, #background, body{  
background:#F0C0F0 }
```

If only the background color should be changed can be used:

```
.background{ background-color:#F0C0F0 }
```

This example shows the color as background, it is applied via the CSS property "background".

To optimize and compress your CSS code, you can use our [online CSS compressor and optimizer](#) based on csstidy. If you want to create a linear or radial gradient as background or border, check our [CSS Gradient Generator](#).

Hey! You found this booklet interesting? Support Converting Colors with the new Membership Option!

The pro membership hides all ads, plus gives you double the colors in the color bucket, and more awesome pro features!

[Learn more, Memberships starting at \\$2.50/m!](#)

**Follow me
on Twitter!**

@ConvertingColor