

Converting Colors

Hex(F0C4F0)

Have a look what the booklet for
Hex(F0C4F0) contains.

Hex(F0C4F0)	3
<i>Conversions</i>	4
<i>Details</i>	6
<i>Harmonies</i>	11
<i>Previews</i>	23
<i>Color Blindness Simulation</i>	26
<i>CSS Examples</i>	29

Color

Hex(F0C4F0)

Conversions

Conversions Part 1

Format	Color
Hex	F0C4F0
RGB	240, 196, 240
RGB Percent	94%, 77%, 94%
CMY	0.0588, 0.2314, 0.0588
CMYK	0.00, 0.18, 0.00, 0.06
HSL	300°, 59%, 85%
HSV	300°, 18%, 94%
XYZ	71.4033, 64.2964, 91.0852
YIQ	214.1720, 12.1000, 23.0120

Conversions

Conversions Part 2

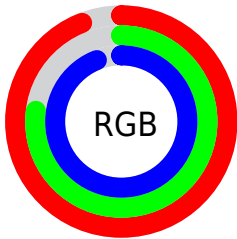
Format	Color
RYB	240, 196, 240
Decimal	15779056
CIELab	84.12, 22.98, -15.83
CIElCh	84, 27.903, 325.442
Yxy	64.2964, 0.3149, 0.2835
Android (android.graphics.Color)	4293969136 (0xFFFF0C4F0)
YUV	214.1720, 12.7332, 22.6512
Hunter-Lab	80.1850, 18.6271, -11.2202

Details

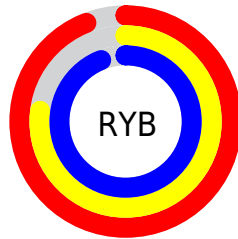
The Hex color **F0C4F0** is a light color, and the websafe version is hex **FFCCFF**. A complement of this color would be **C4F0C4**, and the grayscale version is **D6D6D6**.

A 20% lighter version of the original color is **FFFDFD**, and **B88EB8** is the 20% darker color. If you saturate the color by 10%, you get **F0ACF0**, and if you desaturate by 10%, it is **F0DCF0**.

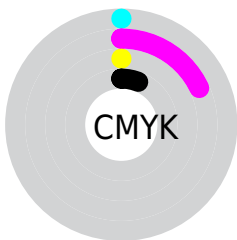
Distribution



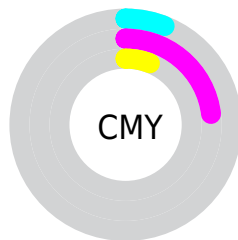
- Red (94%)
- Green (77%)
- Blue (94%)



- Red (94%)
- Yellow (77%)
- Blue (94%)



- Cyan (0%)
- Magenta (18%)
- Yellow (0%)
- Black (6%)



- Cyan (6%)
- Magenta (23%)
- Yellow (6%)

Brightness & Saturation Gradients

These gradients show how the Hex color F0C4F0 changes by changing the brightness by 10 percent. The first figure shows a shift by +10% for each color and the second figure -10%.

Similar to the brightness gradients but the following saturation gradients show a change of the Hex color F0C4F0 by changing the saturation by 10% instead.

 F0C4F0

 F0C4F0

FFFFFF

 D3A9D4

 FFFDFD

 B88EB8

 9C749D

 825B83

 69436A

 502C51

 38173A

 230025

 00010D

 F0C4F0

 F0C4F0

 F0ACF0

 F0DCF0

 F094F0

 F0F4F0

 F07CF0

 F0FFF0

 F064F0

 F04CF0

 F034F0

 F01CF0

 F004F0

 F000F0

Harmonies

Analogous

The Analogous color harmony consists of three colors that are next to each other on the color wheel.



D1CCFF



F0C4F0



FFBFD7

Triad

The Triadic color harmony groups three colors that are evenly spaced from another and form a triangle on the color wheel.



F0C4F0



E9CF9E



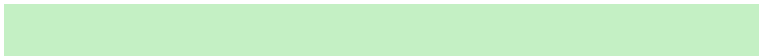
86E0E7

Complementary

The Complementary color scheme is a pair of colors which are on the opposite of each other on the color wheel.



F0C4F0



C4F0C4

Split Complementary

Split-complementary colors differ from the complementary color scheme. The scheme consists of three colors, the original color and two neighbors of the complement color.



94E1CD



F0C4F0



CED7A2

Square

The Square scheme is like the rectangle color scheme, but the four colors are evenly spaced on the color wheel.



F0C4F0



FEC6A7



AFDDB3



8FDCFC

Rectangle

The Rectangle color scheme consists of four colors that form a rectangle on the color wheel.



F0C4F0



FFBFC5



AFDDB3



89E1DF

Sweetspot

The Sweet Spot groups the original color and five complimentary colors.



F0C4F0



FFF0FF



C4C4F0



807780



000000



808080

Same Dimension

The Same Dimension uses a secret algorithm to generate beautiful new colors.



F0C4F0



FFC7FF



F0C4DA



786C78



B800B8



380038

Inverse Universe

The Inverse Universe completely reimagines the original color for something new.



F0C4F0



FFC7FF



C4F0DA



786C78



B800B8



380038

Previews

White Background



This preview shows how the Hex color F0C4F0 looks on a white background.

Color Contrast Check

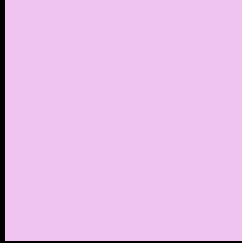
Large Text (above 18pt) WCAG AA × Fail

Any Text WCAG AA × Fail

Large Text (above 18pt) WCAG AAA × Fail

Any Text WCAG AAA × Fail

Black Background



This preview shows how the Hex color F0C4F0 looks on a black background.

Color Contrast Check

Large Text (above 18pt) WCAG AA ✓ Pass

Any Text WCAG AA ✓ Pass

Large Text (above 18pt) WCAG AAA ✓ Pass

Any Text WCAG AAA ✓ Pass

If you want to check with other color combinations, try the [Color Contrast Checker](#).

Hex F0C4F0 Background



This preview shows how black text looks on a background with the Hex color F0C4F0.

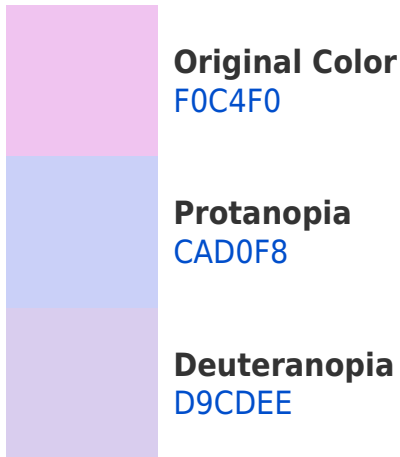


This preview shows how white text looks on a background with the Hex color F0C4F0.

Color Blindness Simulation

Color vision deficiency is a very complex topic, and I could not describe the different causes any better than Wikipedia does, so if you want to learn more, you should check out their [article about color blindness](#).

Dichromacy



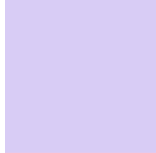


Tritanopia
EDC8D8

Trichromacy



Original Color
F0C4F0



Protanomaly
D8CCF5



Deuteranomaly
E1CAEF

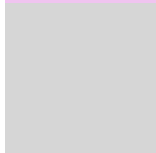


Tritanomaly
EEC7E1

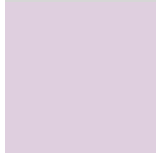
Monochromacy



Original Color
F0C4F0



Achromatopsia
D6D6D6



Achromatomaly
DFCFDF

CSS Examples

Text

The CSS property to change the color of the text to Hex F0C4F0 is called "color". The color property can be set on classes, ids or directly on the HTML element.

This example shows how text in the color #F0C4F0 looks like.

```
.text, #text, p{  
    color:#F0C4F0  
}
```

If you want to add a text shadow in that color use the text-shadow property, you can generate a text shadow directly with our [CSS Text Shadow Generator](#).

Here you see how black text with a 4 pixel #F0C4F0 colored shadow looks like.

```
.shadow{ text-shadow: 4px 4px 2px #F0C4F0
}
```

Border

The CSS property to change the border of an element to Hex F0C4F0 is called "border". The border property can be set on classes, ids or directly on the HTML element.

This example shows the color as border, it can be applied via the CSS property "border" or "border-color".

```
.border, #border, table{ border:4px solid
#F0C4F0 }
```

If only the border color should be changed use the property `border-color`.

```
.border{ border-color:#F0C4F0 }
```

If you want to add a box shadow in that color use:

Here you see how a box with a 4 pixel #F0C4F0 colored shadow looks like.

```
.boxshadow{ -moz-box-shadow:4px 4px 4px  
4px #F0C4F0; -webkit-box-shadow:4px 4px  
4px 4px #F0C4F0; box-shadow:4px 4px 4px  
4px #F0C4F0 }
```

Background

The CSS property to change the background color of an element to Hex F0C4F0 is called "background". The background property can be set on classes, ids or directly on the HTML element.

```
.background, #background, body{  
background:#F0C4F0 }
```

If only the background color should be changed can be used:

```
.background{ background-color:#F0C4F0 }
```

This example shows the color as background, it is applied via the CSS property "background".

To optimize and compress your CSS code, you can use our [online CSS compressor and optimizer](#) based on csstidy. If you want to create a linear or radial gradient as background or border, check our [CSS Gradient Generator](#).

Hey! You found this booklet interesting? Support Converting Colors with the new Membership Option!

The pro membership hides all ads, plus gives you double the colors in the color bucket, and more awesome pro features!

[Learn more, Memberships starting at \\$2.50/m!](#)

**Follow me
on Twitter!**

@ConvertingColor