

Converting Colors

Hex(F0C7DD)

Have a look what the booklet for
Hex(F0C7DD) contains.

Hex(F0C7DD)	3
<i>Conversions</i>	4
<i>Details</i>	6
<i>Harmonies</i>	11
<i>Previews</i>	23
<i>Color Blindness Simulation</i>	26
<i>CSS Examples</i>	29

Color

Hex(F0C7DD)

Conversions

Conversions Part 1

Format	Color
Hex	F0C7DD
RGB	240, 199, 221
RGB Percent	94%, 78%, 87%
CMY	0.0588, 0.2196, 0.1333
CMYK	0.00, 0.17, 0.08, 0.06
HSL	328°, 58%, 86%
HSV	328°, 17%, 94%
XYZ	69.4097, 64.5926, 77.2159
YIQ	213.7670, 17.3740, 15.5340

Conversions

Conversions Part 2

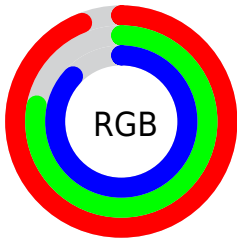
Format	Color
R _Y B	240, 199, 221
Decimal	15779805
CIE Lab	84.27, 18.05, -5.47
CIE LCh	84, 18.858, 343.147
Yxy	64.5926, 0.3286, 0.3058
Android (android.graphics.Color)	4293969885 (0xFFFF0C7DD)
YUV	213.7670, 3.5659, 23.0063
Hunter-Lab	80.3695, 13.5118, -0.7049

Details

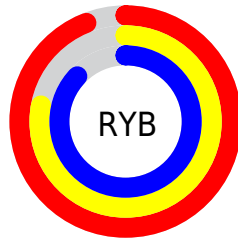
The Hex color **F0C7DD** is a light color, and the websafe version is hex **FFCCCC**. A complement of this color would be **C7F0DA**, and the grayscale version is **D6D6D6**.

A 20% lighter version of the original color is **FFFFFF**, and **B891A6** is the 20% darker color. If you saturate the color by 10%, you get **F0AFD2**, and if you desaturate by 10%, it is **F0DFE8**.

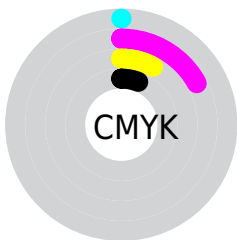
Distribution



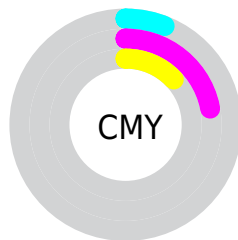
- Red (94%)
- Green (78%)
- Blue (87%)



- Red (94%)
- Yellow (78%)
- Blue (87%)



- Cyan (0%)
- Magenta (17%)
- Yellow (8%)
- Black (6%)



- Cyan (6%)
- Magenta (22%)
- Yellow (13%)

Brightness & Saturation Gradients

These gradients show how the Hex color F0C7DD changes by changing the brightness by 10 percent. The first figure shows a shift by +10% for each color and the second figure -10%.

Similar to the brightness gradients but the following saturation gradients show a change of the Hex color F0C7DD by changing the saturation by 10% instead.

 F0C7DD

 F0C7DD

FFFFFF

 D4ACC1

 B891A6

 9D778C

 825E72

 69465A

 503042

 391A2C

 230218

 000000

 F0C7DD

 F0C7DD

 F0AFD2

 F0DFE8

 F097C7

 F0F7F3

 F07FBC

 F0FFFE

 F067B1

 F0FFFF

 F04FA5

 F0379A

 F01F8F

 F00784

 F00081

Harmonies

Analogous

The Analogous color harmony consists of three colors that are next to each other on the color wheel.



DFCBEC



F0C7DD



F8C6CB

Triad

The Triadic color harmony groups three colors that are evenly spaced from another and form a triangle on the color wheel.



F0C7DD



D8D4B0



A5DBEA

Complementary

The Complementary color scheme is a pair of colors which are on the opposite of each other on the color wheel.



F0C7DD



C7F0DA

Split Complementary

Split-complementary colors differ from the complementary color scheme. The scheme consists of three colors, the original color and two neighbors of the complement color.



A5DDDA



F0C7DD



C4D9B8

Square

The Square scheme is like the rectangle color scheme, but the four colors are evenly spaced on the color wheel.



F0C7DD



EACEB1



B1DCC7



B3D7F4

Rectangle

The Rectangle color scheme consists of four colors that form a rectangle on the color wheel.



F0C7DD



F7C7C0



B1DCC7



A4DCE5

Sweetspot

The Sweet Spot groups the original color and five complimentary colors.



F0C7DD



FFF2F9



D9C7F0



80787C



000000



808080

Same Dimension

The Same Dimension uses a secret algorithm to generate beautiful new colors.



F0C7DD



FFC9E6



F0C7C9



786C72



B80063



38001E

Inverse Universe

The Inverse Universe completely reimagines the original color for something new.



F0C7DD



FFC9E6



C7F0EE



786C72



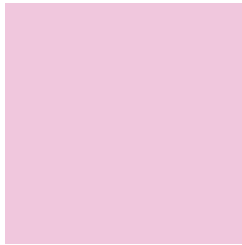
B80063



38001E

Previews

White Background



This preview shows how the Hex color F0C7DD looks on a white background.

Color Contrast Check

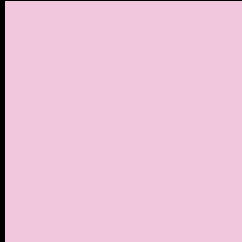
Large Text (above 18pt) WCAG AA × Fail

Any Text WCAG AA × Fail

Large Text (above 18pt) WCAG AAA × Fail

Any Text WCAG AAA × Fail

Black Background



This preview shows how the Hex color F0C7DD looks on a black background.

Color Contrast Check

Large Text (above 18pt) WCAG AA ✓ Pass

Any Text WCAG AA ✓ Pass

Large Text (above 18pt) WCAG AAA ✓ Pass

Any Text WCAG AAA ✓ Pass

If you want to check with other color combinations, try the [Color Contrast Checker](#).

Hex F0C7DD Background



This preview shows how black text looks on a background with the Hex color F0C7DD.

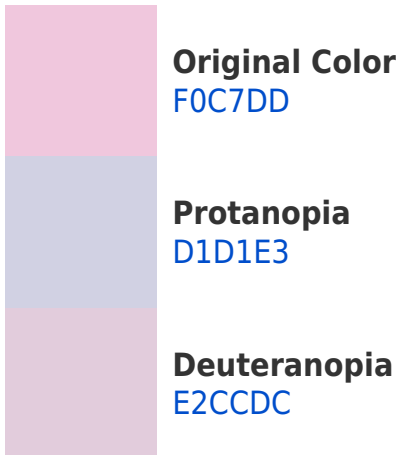


This preview shows how white text looks on a background with the Hex color F0C7DD.

Color Blindness Simulation

Color vision deficiency is a very complex topic, and I could not describe the different causes any better than Wikipedia does, so if you want to learn more, you should check out their [article about color blindness](#).

Dichromacy



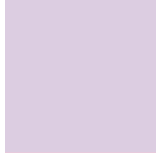


Tritanopia
EFC8D7

Trichromacy



Original Color
F0C7DD



Protanomaly
DCCDE1



Deuteranomaly
E7CADC

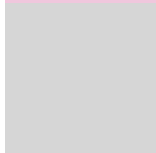


Tritanomaly
EFC8D9

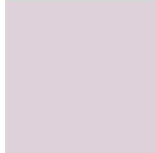
Monochromacy



Original Color
F0C7DD



Achromatopsia
D6D6D6



Achromatomaly
DFD1D9

CSS Examples

Text

The CSS property to change the color of the text to Hex F0C7DD is called "color". The color property can be set on classes, ids or directly on the HTML element.

This example shows how text in the color #F0C7DD looks like.

```
.text, #text, p{  
    color:#F0C7DD  
}
```

If you want to add a text shadow in that color use the text-shadow property, you can generate a text shadow directly with our [CSS Text Shadow Generator](#).

Here you see how black text with a 4 pixel #F0C7DD colored shadow looks like.

```
.shadow{ text-shadow: 4px 4px 2px #F0C7DD
}
```

Border

The CSS property to change the border of an element to Hex F0C7DD is called "border". The border property can be set on classes, ids or directly on the HTML element.

This example shows the color as border, it can be applied via the CSS property "border" or "border-color".

```
.border, #border, table{ border:4px solid
#F0C7DD }
```

If only the border color should be changed use the property `border-color`.

```
.border{ border-color:#F0C7DD }
```

If you want to add a box shadow in that color use:

Here you see how a box with a 4 pixel #F0C7DD colored shadow looks like.

```
.boxshadow{ -moz-box-shadow:4px 4px 4px  
4px #F0C7DD; -webkit-box-shadow:4px 4px  
4px 4px #F0C7DD; box-shadow:4px 4px 4px  
4px #F0C7DD }
```

Background

The CSS property to change the background color of an element to Hex F0C7DD is called "background". The background property can be set on classes, ids or directly on the HTML element.

```
.background, #background, body{  
background:#F0C7DD }
```

If only the background color should be changed can be used:

```
.background{ background-color:#F0C7DD }
```

This example shows the color as background, it is applied via the CSS property "background".

To optimize and compress your CSS code, you can use our [online CSS compressor and optimizer](#) based on csstidy. If you want to create a linear or radial gradient as background or border, check our [CSS Gradient Generator](#).

Hey! You found this booklet interesting? Support Converting Colors with the new Membership Option!

The pro membership hides all ads, plus gives you double the colors in the color bucket, and more awesome pro features!

[Learn more, Memberships starting at \\$2.50/m!](#)

**Follow me
on Twitter!**

@ConvertingColor