

Converting Colors

Hex(F0C9C1)

Have a look what the booklet for
Hex(F0C9C1) contains.

Hex(F0C9C1)	3
<i>Conversions</i>	4
<i>Details</i>	6
<i>Harmonies</i>	11
<i>Previews</i>	23
<i>Color Blindness Simulation</i>	26
<i>CSS Examples</i>	29

Color

Hex(F0C9C1)

Conversions

Conversions Part 1

Format	Color
Hex	F0C9C1
RGB	240, 201, 193
RGB Percent	94%, 79%, 76%
CMY	0.0588, 0.2118, 0.2431
CMYK	0.00, 0.16, 0.20, 0.06
HSL	10°, 61%, 85%
HSV	10°, 20%, 94%
XYZ	66.4475, 64.1488, 59.3319
YIQ	211.7490, 25.8120, 5.7800

Conversions

Conversions Part 2

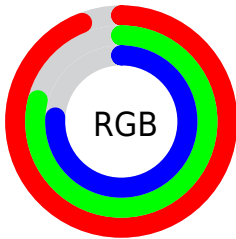
Format	Color
R _Y B	240, 203, 193
Decimal	15780289
CIE Lab	84.04, 12.54, 9.13
CIE LCh	84, 15.513, 36.056
Yxy	64.1488, 0.3499, 0.3378
Android (android.graphics.Color)	4293970369 (0xFFFF0C9C1)
YUV	211.7490, -9.2433, 24.7761
Hunter-Lab	80.0930, 7.9262, 12.1438

Details

The Hex color **F0C9C1** is a light color, and the websafe version is hex **FFCCCC**. A complement of this color would be **C1E8F0**, and the grayscale version is **D4D4D4**.

A 20% lighter version of the original color is **FFFFFF9**, and **B7938C** is the 20% darker color. If you saturate the color by 10%, you get **F0B5A9**, and if you desaturate by 10%, it is **F0DDD9**.

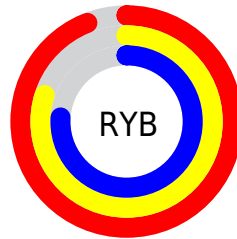
Distribution



Red (94%)

Green (79%)

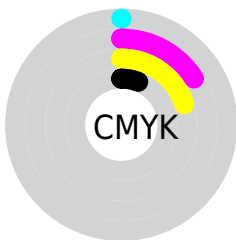
Blue (76%)



Red (94%)

Yellow (80%)

Blue (76%)

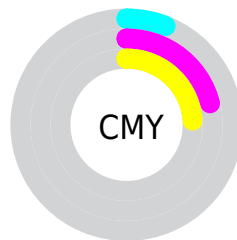


Cyan (0%)

Magenta (16%)

Yellow (20%)

Black (6%)



Cyan (6%)

Magenta (21%)

Yellow (24%)

Brightness & Saturation Gradients

These gradients show how the Hex color F0C9C1 changes by changing the brightness by 10 percent. The first figure shows a shift by +10% for each color and the second figure -10%.

Similar to the brightness gradients but the following saturation gradients show a change of the Hex color F0C9C1 by changing the saturation by 10% instead.

 F0C9C1

 F0C9C1

FFFFFFF

 D3AEA6

 FFFFFF9

 B7938C

 9C7972

 82605A

 684842

 4F322C

 371C17

 230400

 000000

 F0C9C1

 F0C9C1

 F0B5A9

 F0DDD9

 F0A191

 F0F1F1

 F08D79

 F0FFFF

 F07961

 F06549

 F05231

 F03E19

 F02A01

 F02900

Harmonies

Analogous

The Analogous color harmony consists of three colors that are next to each other on the color wheel.



F0C8CF



F0C9C1



E8CDB7

Triad

The Triadic color harmony groups three colors that are evenly spaced from another and form a triangle on the color wheel.



F0C9C1



BAD9C5



C6D2EE

Complementary

The Complementary color scheme is a pair of colors which are on the opposite of each other on the color wheel.



F0C9C1



C1E8F0

Split Complementary

Split-complementary colors differ from the complementary color scheme. The scheme consists of three colors, the original color and two neighbors of the complement color.



B5D6EC



F0C9C1



AFDAD4

Square

The Square scheme is like the rectangle color scheme, but the four colors are evenly spaced on the color wheel.



F0C9C1



CAD6BA



ADD9E2



D8CDE9

Rectangle

The Rectangle color scheme consists of four colors that form a rectangle on the color wheel.



F0C9C1



E0D0B5



ADD9E2



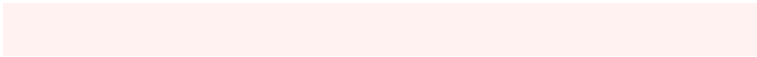
C0D3EE

Sweetspot

The Sweet Spot groups the original color and five complimentary colors.



F0C9C1



FFF2F0



F0C1E8



807877



000000



808080

Same Dimension

The Same Dimension uses a secret algorithm to generate beautiful new colors.



F0C9C1



FFCC2



F0E0C1



786E6C



B81F00



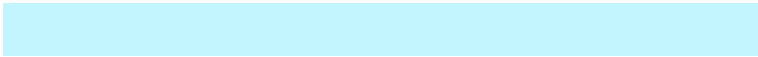
380A00

Inverse Universe

The Inverse Universe completely reimagines the original color for something new.



C1E8F0



C2F5FF



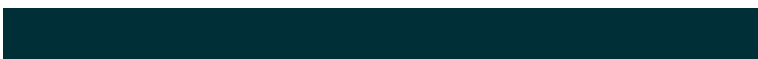
C1D1F0



6C7678



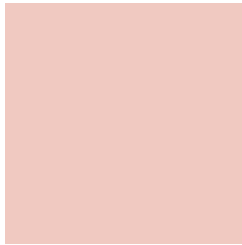
0098B8



002F38

Previews

White Background



This preview shows how the Hex color F0C9C1 looks on a white background.

Color Contrast Check

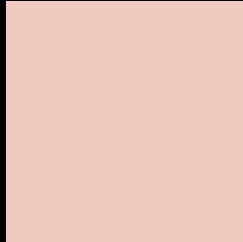
Large Text (above 18pt) WCAG AA × Fail

Any Text WCAG AA × Fail

Large Text (above 18pt) WCAG AAA × Fail

Any Text WCAG AAA × Fail

Black Background



This preview shows how the Hex color F0C9C1 looks on a black background.

Color Contrast Check

Large Text (above 18pt) WCAG AA ✓ Pass

Any Text WCAG AA ✓ Pass

Large Text (above 18pt) WCAG AAA ✓ Pass

Any Text WCAG AAA ✓ Pass

If you want to check with other color combinations, try the [Color Contrast Checker](#).

Hex F0C9C1 Background



This preview shows how black text looks on a background with the Hex color F0C9C1.

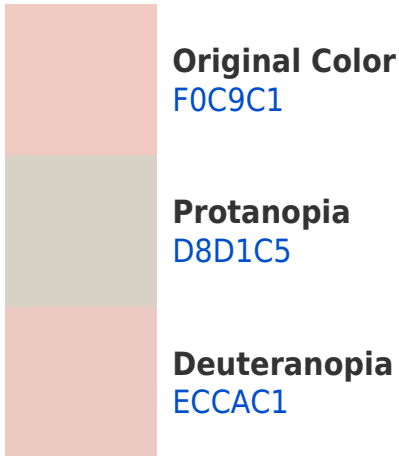


This preview shows how white text looks on a background with the Hex color F0C9C1.

Color Blindness Simulation

Color vision deficiency is a very complex topic, and I could not describe the different causes any better than Wikipedia does, so if you want to learn more, you should check out their [article about color blindness](#).

Dichromacy





Tritanopia
F2C6D5

Trichromacy



Original Color
F0C9C1

Protanomaly
E1CEC4

Deuteranomaly
EDCAC1

Tritanomaly
F1C7CE

Monochromacy



Original Color
F0C9C1

Achromatopsia
D4D4D4

Achromatomaly
DED0CD

CSS Examples

Text

The CSS property to change the color of the text to Hex F0C9C1 is called "color". The color property can be set on classes, ids or directly on the HTML element.

This example shows how text in the color #F0C9C1 looks like.

```
.text, #text, p{  
    color:#F0C9C1  
}
```

If you want to add a text shadow in that color use the text-shadow property, you can generate a text shadow directly with our [CSS Text Shadow Generator](#).

Here you see how black text with a 4 pixel #F0C9C1 colored shadow looks like.

```
.shadow{ text-shadow: 4px 4px 2px #F0C9C1
}
```

Border

The CSS property to change the border of an element to Hex F0C9C1 is called "border". The border property can be set on classes, ids or directly on the HTML element.

This example shows the color as border, it can be applied via the CSS property "border" or "border-color".

```
.border, #border, table{ border:4px solid
#F0C9C1 }
```

If only the border color should be changed use the property `border-color`.

```
.border{ border-color:#F0C9C1 }
```

If you want to add a box shadow in that color use:

Here you see how a box with a 4 pixel #F0C9C1 colored shadow looks like.

```
.boxshadow{ -moz-box-shadow:4px 4px 4px  
4px #F0C9C1; -webkit-box-shadow:4px 4px  
4px 4px #F0C9C1; box-shadow:4px 4px 4px  
4px #F0C9C1 }
```

Background

The CSS property to change the background color of an element to Hex F0C9C1 is called "background". The background property can be set on classes, ids or directly on the HTML element.

```
.background, #background, body{  
background:#F0C9C1 }
```

If only the background color should be changed can be used:

```
.background{ background-color:#F0C9C1 }
```

This example shows the color as background, it is applied via the CSS property "background".

To optimize and compress your CSS code, you can use our [online CSS compressor and optimizer](#) based on csstidy. If you want to create a linear or radial gradient as background or border, check our [CSS Gradient Generator](#).

Hey! You found this booklet interesting? Support Converting Colors with the new Membership Option!

The pro membership hides all ads, plus gives you double the colors in the color bucket, and more awesome pro features!

[Learn more, Memberships starting at \\$2.50/m!](#)

**Follow me
on Twitter!**

@ConvertingColor