

# Converting Colors

Hex(F0D0BC)

Have a look what the booklet for  
Hex(F0D0BC) contains.

<b>Hex(F0D0BC)</b> .....	3
<i><b>Conversions</b></i> .....	4
<i><b>Details</b></i> .....	6
<i><b>Harmonies</b></i> .....	11
<i><b>Previews</b></i> .....	23
<i><b>Color Blindness Simulation</b></i> .....	26
<i><b>CSS Examples</b></i> .....	29

# **Color**

**Hex(F0D0BC)**

# Conversions

## Conversions Part 1

Format	Color
Hex	F0D0BC
RGB	240, 208, 188
RGB Percent	94%, 82%, 74%
CMY	0.0588, 0.1843, 0.2627
CMYK	0.00, 0.13, 0.22, 0.06
HSL	23°, 63%, 84%
HSV	23°, 22%, 94%
XYZ	67.5682, 67.2679, 56.9997
YIQ	215.2880, 25.4920, 0.5640

# Conversions

## Conversions Part 2

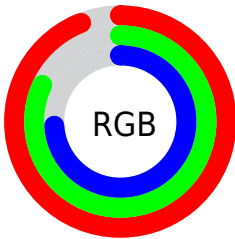
Format	Color
RYB	240, 221, 188
Decimal	15782076
CIELab	85.64, 8.14, 14.05
CIELCh	86, 16.240, 59.905
Yxy	67.2679, 0.3522, 0.3507
Android (android.graphics.Color)	4293972156 (0xFFFF0D0BC)
YUV	215.2880, -13.4530, 21.6724
Hunter-Lab	82.0170, 3.5242, 16.2068

# Details

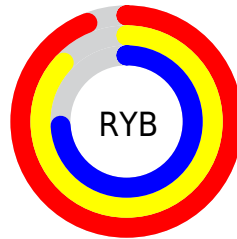
The Hex color **F0D0BC** is a light color, and the websafe version is hex **FFCCCC**. A complement of this color would be **BCDCF0**, and the grayscale version is **D7D7D7**.

A 20% lighter version of the original color is **FFFFFF4**, and **B79A87** is the 20% darker color. If you saturate the color by 10%, you get **F0C1A4**, and if you desaturate by 10%, it is **F0DFD4**.

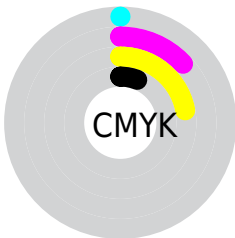
# Distribution



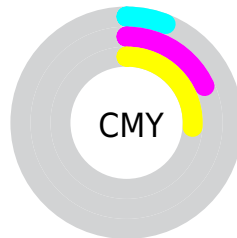
- Red (94%)
- Green (82%)
- Blue (74%)



- Red (94%)
- Yellow (87%)
- Blue (74%)



- Cyan (0%)
- Magenta (13%)
- Yellow (22%)
- Black (6%)



- Cyan (6%)
- Magenta (18%)
- Yellow (26%)

# Brightness & Saturation Gradients

These gradients show how the Hex color F0D0BC changes by changing the brightness by 10 percent. The first figure shows a shift by +10% for each color and the second figure -10%.

Similar to the brightness gradients but the following saturation gradients show a change of the Hex color F0D0BC by changing the saturation by 10% instead.



 F0D0BC

FFFFFF

 FFFFF4

 F0D0BC

 D3B4A1

 B79A87

 9C806D

 826755

 684F3E

 4F3828

 372213

 220D00

 000000

 F0D0BC

 F0D0BC

 F0C1A4

 F0DFD4

 F0B28C

 F0EEEC

 F0A474

 F0FCFF

 F0955C

 F0FFFF

 F08644

 F0772C

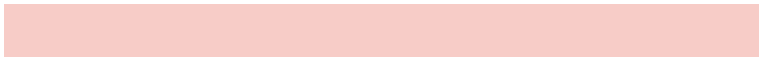
 F06914

 F05C00

# Harmonies

## Analogous

The Analogous color harmony consists of three colors that are next to each other on the color wheel.



F7CCC7



F0D0BC



E3D5B8

# Triad

The Triadic color harmony groups three colors that are evenly spaced from another and form a triangle on the color wheel.



F0D0BC



B3DFD5



D9D2F1

# Complementary

The Complementary color scheme is a pair of colors which are on the opposite of each other on the color wheel.



F0D0BC



BCDCF0

# Split Complementary

Split-complementary colors differ from the complementary color scheme. The scheme consists of three colors, the original color and two neighbors of the complement color.



C5D7F4



F0D0BC



AFDfE5

# Square

The Square scheme is like the rectangle color scheme, but the four colors are evenly spaced on the color wheel.



F0D0BC



C0DDC6



B5DCF0



EACEE6

# Rectangle

The Rectangle color scheme consists of four colors that form a rectangle on the color wheel.



F0D0BC



D7D8B9



B5DCF0



D3D4F3

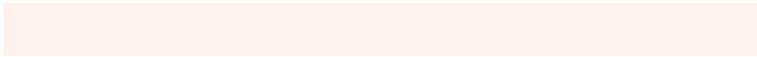


# Sweetspot

The Sweet Spot groups the original color and five complimentary colors.



F0D0BC



FFF4ED



F0BCDC



807975



000000



808080



# Same Dimension

The Same Dimension uses a secret algorithm to generate beautiful new colors.



F0D0BC



FFD6BD



F0EABC



78706C



B84700



381600

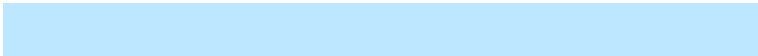


# Inverse Universe

The Inverse Universe completely reimagines the original color for something new.



BCDCF0



BDE6FF



BCC2F0



6C7378



0071B8

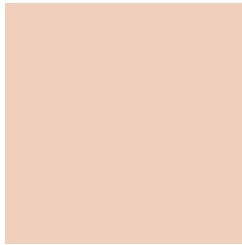


002338



# Previews

## White Background



This preview shows how the Hex color F0D0BC looks on a white background.

## Color Contrast Check

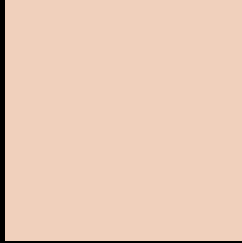
Large Text (above 18pt) WCAG AA × Fail

Any Text WCAG AA × Fail

Large Text (above 18pt) WCAG AAA × Fail

Any Text WCAG AAA × Fail

# Black Background



This preview shows how the Hex color F0D0BC looks on a black background.

## Color Contrast Check

Large Text (above 18pt) WCAG AA ✓ Pass

Any Text WCAG AA ✓ Pass

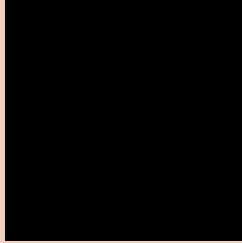
Large Text (above 18pt) WCAG AAA ✓ Pass

Any Text WCAG AAA ✓ Pass

If you want to check with other color combinations, try the [Color Contrast Checker](#).



## Hex F0D0BC Background



This preview shows how black text looks on a background with the Hex color F0D0BC.



This preview shows how white text looks on a background with the Hex color F0D0BC.

# Color Blindness Simulation

Color vision deficiency is a very complex topic, and I could not describe the different causes any better than Wikipedia does, so if you want to learn more, you should check out their [article about color blindness](#).

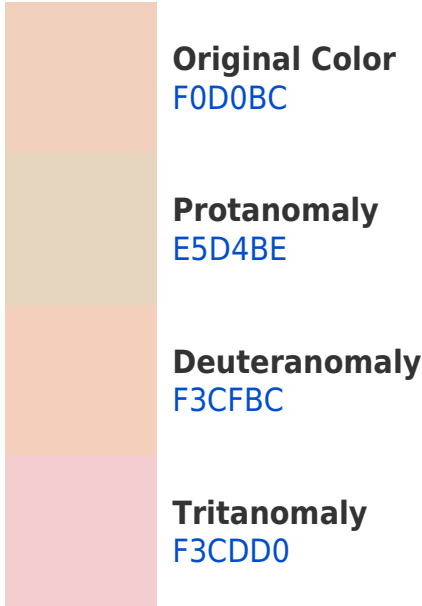
## Dichromacy



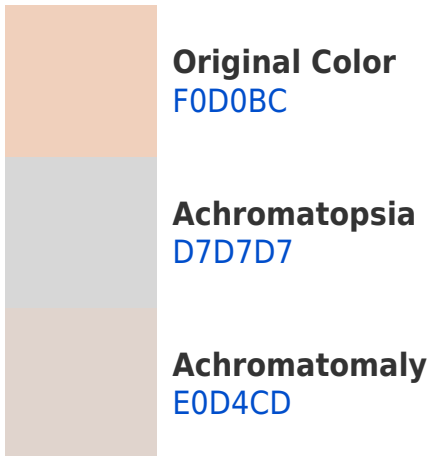


**Tritanopia**  
F4CBDB

# Trichromacy



# Monochromacy



# CSS Examples

## Text

The CSS property to change the color of the text to Hex F0D0BC is called "color". The color property can be set on classes, ids or directly on the HTML element.

This example shows how text in the color #F0D0BC looks like.

```
.text, #text, p{  
    color:#F0D0BC  
}
```

If you want to add a text shadow in that color use the text-shadow property, you can generate a text shadow directly with our [CSS Text Shadow Generator](#).

Here you see how black text with a 4 pixel #F0D0BC colored shadow looks like.

```
.shadow{ text-shadow: 4px 4px 2px #F0D0BC }  
}
```

## Border

The CSS property to change the border of an element to Hex F0D0BC is called "border". The border property can be set on classes, ids or directly on the HTML element.

This example shows the color as border, it can be applied via the CSS property "border" or "border-color".

```
.border, #border, table{ border:4px solid #F0D0BC }  
}
```

If only the border color should be changed use the property `border-color`.

```
.border{ border-color:#F0D0BC }
```

If you want to add a box shadow in that color use:

Here you see how a box with a 4 pixel #F0D0BC colored shadow looks like.

```
.boxshadow{ -moz-box-shadow:4px 4px 4px  
4px #F0D0BC; -webkit-box-shadow:4px 4px  
4px 4px #F0D0BC; box-shadow:4px 4px 4px  
4px #F0D0BC }
```

# Background

The CSS property to change the background color of an element to Hex F0D0BC is called "background". The background property can be set on classes, ids or directly on the HTML element.

```
.background, #background, body{  
background:#F0D0BC }
```

If only the background color should be changed can be used:

```
.background{ background-color:#F0D0BC }
```

This example shows the color as background, it is applied via the CSS property "background".

To optimize and compress your CSS code, you can use our [online CSS compressor and optimizer](#) based on csstidy. If you want to create a linear or radial gradient as background or border, check our [CSS Gradient Generator](#).



Hey! You found this booklet interesting? Support Converting Colors with the new Membership Option!

The pro membership hides all ads, plus gives you double the colors in the color bucket, and more awesome pro features!

**[Learn more, Memberships starting at \\$2.50/m!](#)**

**Follow me  
on Twitter!**

@ConvertingColor