

# Converting Colors

Hex(F0D9C8)

Have a look what the booklet for  
Hex(F0D9C8) contains.

<b>Hex(F0D9C8)</b> .....	3
<b><i>Conversions</i></b> .....	4
<b><i>Details</i></b> .....	6
<b><i>Harmonies</i></b> .....	11
<b><i>Previews</i></b> .....	23
<b><i>Color Blindness Simulation</i></b> .....	26
<b><i>CSS Examples</i></b> .....	29

# **Color**

**Hex(F0D9C8)**

# Conversions

## Conversions Part 1

Format	Color
Hex	F0D9C8
RGB	240, 217, 200
RGB Percent	94%, 85%, 78%
CMY	0.0588, 0.1490, 0.2157
CMYK	0.00, 0.10, 0.17, 0.06
HSL	25°, 57%, 86%
HSV	25°, 17%, 94%
XYZ	71.1734, 72.3211, 64.8517
YIQ	221.9390, 19.1650, -0.4110

# Conversions

## Conversions Part 2

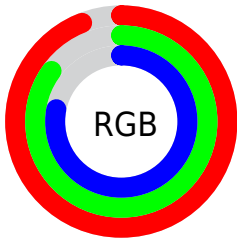
Format	Color
R <sub>Y</sub> B	240, 230, 200
Decimal	15784392
CIE Lab	88.12, 5.24, 11.25
CIE LCh	88, 12.407, 65.036
Yxy	72.3211, 0.3416, 0.3471
Android (android.graphics.Color)	4293974472 (0xFFFF0D9C8)
YUV	221.9390, -10.8159, 15.8395
Hunter-Lab	85.0418, 0.5674, 14.3155

# Details

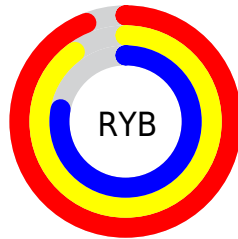
The Hex color **F0D9C8** is a light color, and the websafe version is hex **FFCCCC**. A complement of this color would be **C8DFF0**, and the grayscale version is **DEDEDE**.

A 20% lighter version of the original color is **FFFFFF**, and **B8A292** is the 20% darker color. If you saturate the color by 10%, you get **FOCBB0**, and if you desaturate by 10%, it is **F0E7E0**.

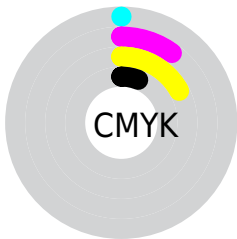
# Distribution



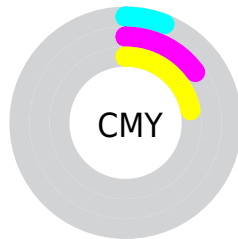
- Red (94%)
- Green (85%)
- Blue (78%)



- Red (94%)
- Yellow (90%)
- Blue (78%)



- Cyan (0%)
- Magenta (10%)
- Yellow (17%)
- Black (6%)



- Cyan (6%)
- Magenta (15%)
- Yellow (22%)

# Brightness & Saturation Gradients

These gradients show how the Hex color F0D9C8 changes by changing the brightness by 10 percent. The first figure shows a shift by +10% for each color and the second figure -10%.

Similar to the brightness gradients but the following saturation gradients show a change of the Hex color F0D9C8 by changing the saturation by 10% instead.



 F0D9C8

FFFFFF

 F0D9C8

 D4BDAD

 B8A292

 9D8878

 826F60

 695648

 503F31

 39291C

 241502

 000000

 F0D9C8

 F0D9C8

 F0CBB0

 F0E7E0

 F0BD98

 F0F5F8

 F0B080

 F0FFFF

 F0A268

 F09450

 F08638

 F07820

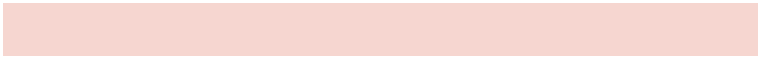
 F06B08

 F06600

# Harmonies

## Analogous

The Analogous color harmony consists of three colors that are next to each other on the color wheel.



F6D6D0



F0D9C8



E5DDC6

# Triad

The Triadic color harmony groups three colors that are evenly spaced from another and form a triangle on the color wheel.



F0D9C8



C2E4DF



E2D9F0

# Complementary

The Complementary color scheme is a pair of colors which are on the opposite of each other on the color wheel.



F0D9C8



C8DFF0

# Split Complementary

Split-complementary colors differ from the complementary color scheme. The scheme consists of three colors, the original color and two neighbors of the complement color.



D3DDF4



F0D9C8



C0E3EA

# Square

The Square scheme is like the rectangle color scheme, but the four colors are evenly spaced on the color wheel.



F0D9C8



CAE3D3



C6E1F2



EFD6E7

# Rectangle

The Rectangle color scheme consists of four colors that form a rectangle on the color wheel.



F0D9C8



DCDFC8



C6E1F2



DDDBF2



# Sweetspot

The Sweet Spot groups the original color and five complimentary colors.



F0D9C8



FFF8F2



F0C8DF



807B78



000000



808080

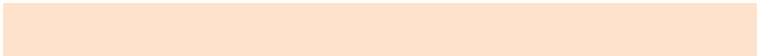


# Same Dimension

The Same Dimension uses a secret algorithm to generate beautiful new colors.



F0D9C8



FFE2CC



F0EDC8



78716C



B84E00



381800

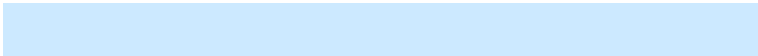


# Inverse Universe

The Inverse Universe completely reimagines the original color for something new.



C8DFF0



CCE9FF



C8CBF0



6C7378



006AB8

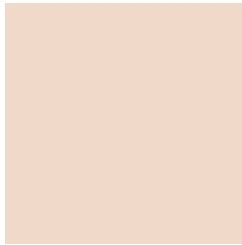


002038



# Previews

## White Background



This preview shows how the Hex color F0D9C8 looks on a white background.

## Color Contrast Check

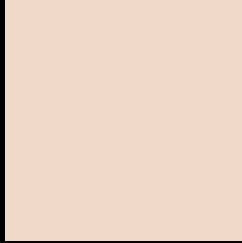
Large Text (above 18pt) WCAG AA × Fail

Any Text WCAG AA × Fail

Large Text (above 18pt) WCAG AAA × Fail

Any Text WCAG AAA × Fail

# Black Background



This preview shows how the Hex color F0D9C8 looks on a black background.

## Color Contrast Check

Large Text (above 18pt) WCAG AA ✓ Pass

Any Text WCAG AA ✓ Pass

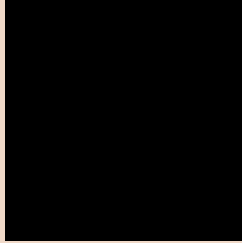
Large Text (above 18pt) WCAG AAA ✓ Pass

Any Text WCAG AAA ✓ Pass

If you want to check with other color combinations, try the [Color Contrast Checker](#).



## Hex F0D9C8 Background



This preview shows how black text looks on a background with the Hex color F0D9C8.

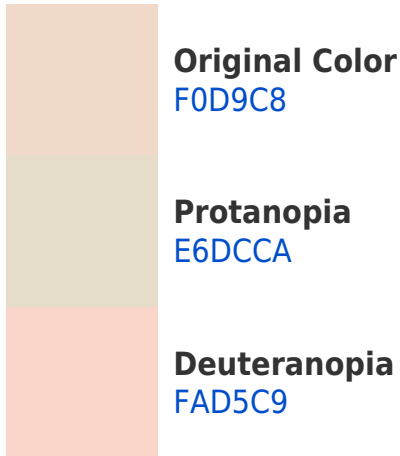


This preview shows how white text looks on a background with the Hex color F0D9C8.

# Color Blindness Simulation

Color vision deficiency is a very complex topic, and I could not describe the different causes any better than Wikipedia does, so if you want to learn more, you should check out their [article about color blindness](#).

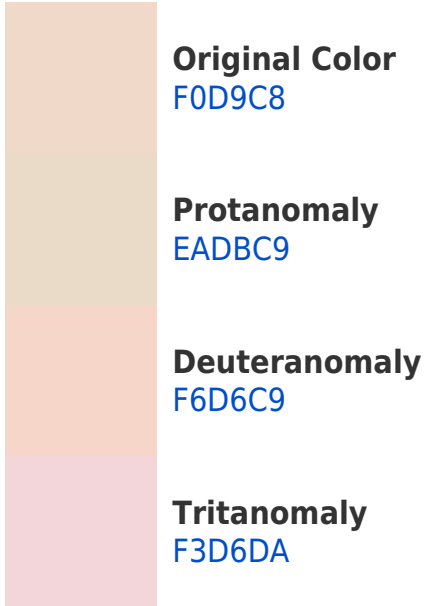
## Dichromacy



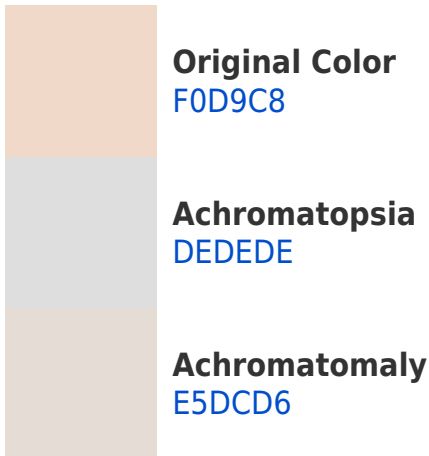


**Tritanopia**  
F4D5E5

# Trichromacy



# Monochromacy



# CSS Examples

## Text

The CSS property to change the color of the text to Hex F0D9C8 is called "color". The color property can be set on classes, ids or directly on the HTML element.

This example shows how text in the color #F0D9C8 looks like.

```
.text, #text, p{  
    color:#F0D9C8  
}
```

If you want to add a text shadow in that color use the text-shadow property, you can generate a text shadow directly with our [CSS Text Shadow Generator](#).

Here you see how black text with a 4 pixel #F0D9C8 colored shadow looks like.

```
.shadow{ text-shadow: 4px 4px 2px #F0D9C8
}
```

## Border

The CSS property to change the border of an element to Hex F0D9C8 is called "border". The border property can be set on classes, ids or directly on the HTML element.

This example shows the color as border, it can be applied via the CSS property "border" or "border-color".

```
.border, #border, table{ border:4px solid
#F0D9C8 }
```

If only the border color should be changed use the property `border-color`.

```
.border{ border-color:#F0D9C8 }
```

If you want to add a box shadow in that color use:

Here you see how a box with a 4 pixel #F0D9C8 colored shadow looks like.

```
.boxshadow{ -moz-box-shadow:4px 4px 4px  
4px #F0D9C8; -webkit-box-shadow:4px 4px  
4px 4px #F0D9C8; box-shadow:4px 4px 4px  
4px #F0D9C8 }
```

# Background

The CSS property to change the background color of an element to Hex F0D9C8 is called "background". The background property can be set on classes, ids or directly on the HTML element.

```
.background, #background, body{  
background:#F0D9C8 }
```

If only the background color should be changed can be used:

```
.background{ background-color:#F0D9C8 }
```

This example shows the color as background, it is applied via the CSS property "background".

To optimize and compress your CSS code, you can use our [online CSS compressor and optimizer](#) based on csstidy. If you want to create a linear or radial gradient as background or border, check our [CSS Gradient Generator](#).



Hey! You found this booklet interesting? Support Converting Colors with the new Membership Option!

The pro membership hides all ads, plus gives you double the colors in the color bucket, and more awesome pro features!

**[Learn more, Memberships starting at \\$2.50/m!](#)**

**Follow me  
on Twitter!**

@ConvertingColor