

Converting Colors

Hex(F12967)

Have a look what the booklet for
Hex(F12967) contains.

Hex(F12967)	3
<i>Conversions</i>	4
<i>Details</i>	6
<i>Harmonies</i>	11
<i>Previews</i>	23
<i>Color Blindness Simulation</i>	26
<i>CSS Examples</i>	29

Color

Hex(F12967)

Conversions

Conversions Part 1

Format	Color
Hex	F12967
RGB	241, 41, 103
RGB Percent	95%, 16%, 40%
CMY	0.0549, 0.8392, 0.5961
CMYK	0.00, 0.83, 0.57, 0.05
HSL	341°, 88%, 55%
HSV	341°, 83%, 95%
XYZ	39.5167, 21.2659, 14.8539
YIQ	107.8680, 99.2980, 61.6820

Conversions

Conversions Part 2

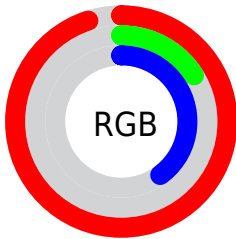
Format	Color
R_{YB}	241, 41, 103
Decimal	15804775
CIE Lab	53.24, 74.73, 16.42
CIE LCh	53, 76.517, 12.392
Yxy	21.2659, 0.5225, 0.2812
Android (android.graphics.Color)	4293994855 (0xFFFF12967)
YUV	107.8680, -2.3999, 116.7568
Hunter-Lab	46.1150, 72.2586, 13.1828

Details

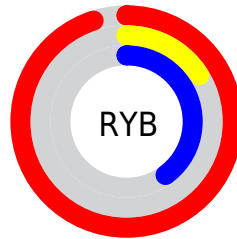
The Hex color **F12967** is a dark color, and the websafe version is hex **FF3366**. The color can be described as dark washed rose. A complement of this color would be **29F1B3**, and the grayscale version is **6C6C6C**.

A 20% lighter version of the original color is **FF6E9A**, and **B20039** is the 20% darker color. If you saturate the color by 10%, you get **F11156**, and if you desaturate by 10%, it is **F14178**.

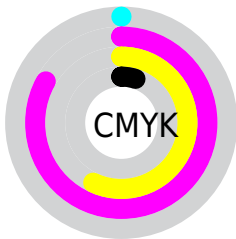
Distribution



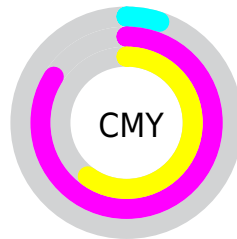
- Red (95%)
- Green (16%)
- Blue (40%)



- Red (95%)
- Yellow (16%)
- Blue (40%)



- Cyan (0%)
- Magenta (83%)
- Yellow (57%)
- Black (5%)



- Cyan (5%)
- Magenta (84%)
- Yellow (60%)

Brightness & Saturation Gradients

These gradients show how the Hex color F12967 changes by changing the brightness by 10 percent. The first figure shows a shift by +10% for each color and the second figure -10%.

Similar to the brightness gradients but the following saturation gradients show a change of the Hex color F12967 by changing the saturation by 10% instead.

 F12967

 F12967

FFFFFF

 D1004F

 FF6E9A

 B20039

 FF8CB4

 920024

 FFA9D0

 73000F

 FFC7EC

 550003

 FFE5FF

 360002

 060000

 000000

 F12967

 F12967

 F11156

 F14178

 F1004B

 F15988

 F17199

 F189AA

 F1A1BA

 F1BACB

 F1D2DB

 F1EAEC

 F1FFFD

Harmonies

Analogous

The Analogous color harmony consists of three colors that are next to each other on the color wheel.



DF37A9



F12967



E14B27

Triad

The Triadic color harmony groups three colors that are evenly spaced from another and form a triangle on the color wheel.



F12967



2E9200



0092FE

Complementary

The Complementary color scheme is a pair of colors which are on the opposite of each other on the color wheel.



F12967



29F1B3

Split Complementary

Split-complementary colors differ from the complementary color scheme. The scheme consists of three colors, the original color and two neighbors of the complement color.



009AD7



F12967



009954

Square

The Square scheme is like the rectangle color scheme, but the four colors are evenly spaced on the color wheel.



F12967



818500



009C9A



007EFF

Rectangle

The Rectangle color scheme consists of four colors that form a rectangle on the color wheel.



F12967



C96300



009C9A



0095F4

Sweetspot

The Sweet Spot groups the original color and five complimentary colors.



F12967



FFBFD3



B229F1



805965



000000



808080

Same Dimension

The Same Dimension uses a secret algorithm to generate beautiful new colors.



F12967



FF004F



F14E29



786C70



B80039



380011

Inverse Universe

The Inverse Universe completely reimagines the original color for something new.



F12967



FF004F



29CCF1



786C70



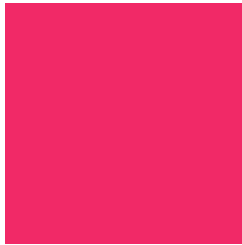
B80039



380011

Previews

White Background



This preview shows how the Hex color F12967 looks on a white background.

Color Contrast Check

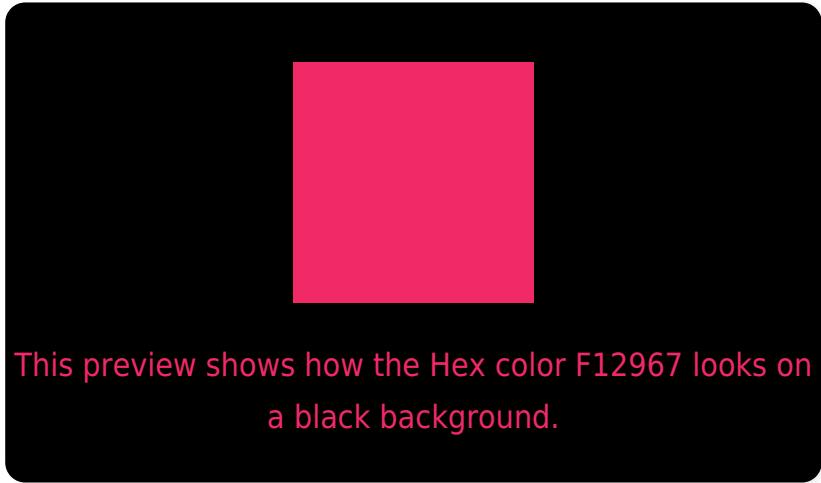
Large Text (above 18pt) WCAG AA ✓ Pass

Any Text WCAG AA × Fail

Large Text (above 18pt) WCAG AAA × Fail

Any Text WCAG AAA × Fail

Black Background



Color Contrast Check

Large Text (above 18pt) WCAG AA ✓ Pass

Any Text WCAG AA ✓ Pass

Large Text (above 18pt) WCAG AAA ✓ Pass

Any Text WCAG AAA × Fail

If you want to check with other color combinations, try the [Color Contrast Checker](#).

Hex F12967 Background



This preview shows how black text looks on a background with the Hex color F12967.

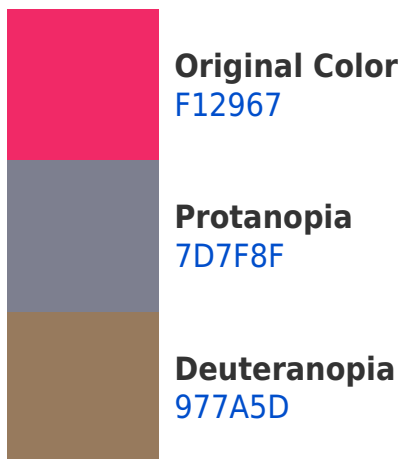


This preview shows how white text looks on a background with the Hex color F12967.

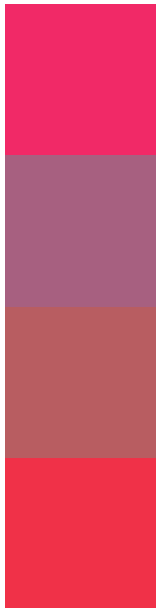
Color Blindness Simulation

Color vision deficiency is a very complex topic, and I could not describe the different causes any better than Wikipedia does, so if you want to learn more, you should check out their [article about color blindness](#).

Dichromacy



Trichromacy



Original Color
F12967

Protanomaly
A76080

Deuteranomaly
B85D61

Tritanomaly
F03148

Monochromacy



Original Color
F12967

Achromatopsia
6C6C6C

Achromatomaly
9C546A

CSS Examples

Text

The CSS property to change the color of the text to Hex F12967 is called "color". The color property can be set on classes, ids or directly on the HTML element.

This example shows how text in the color #F12967 looks like.

```
.text, #text, p{  
    color:#F12967  
}
```

If you want to add a text shadow in that color use the text-shadow property, you can generate a text shadow directly with our [CSS Text Shadow Generator](#).

Here you see how black text with a 4 pixel #F12967 colored shadow looks like.

```
.shadow{ text-shadow: 4px 4px 2px #F12967
}
```

Border

The CSS property to change the border of an element to Hex F12967 is called "border". The border property can be set on classes, ids or directly on the HTML element.

This example shows the color as border, it can be applied via the CSS property "border" or "border-color".

```
.border, #border, table{ border:4px solid
#F12967 }
```

If only the border color should be changed use the property border-color.

```
.border{ border-color:#F12967 }
```

If you want to add a box shadow in that color use:

Here you see how a box with a 4 pixel #F12967 colored shadow looks like.

```
.boxshadow{ -moz-box-shadow:4px 4px 4px  
4px #F12967; -webkit-box-shadow:4px 4px  
4px 4px #F12967; box-shadow:4px 4px 4px  
4px #F12967 }
```

Background

The CSS property to change the background color of an element to Hex F12967 is called "background". The background property can be set on classes, ids or directly on the HTML element.

```
.background, #background, body{  
background:#F12967 }
```

If only the background color should be changed can be used:

```
.background{ background-color:#F12967 }
```

This example shows the color as background, it is applied via the CSS property "background".

To optimize and compress your CSS code, you can use our [online CSS compressor and optimizer](#) based on csstidy. If you want to create a linear or radial gradient as background or border, check our [CSS Gradient Generator](#).

Hey! You found this booklet interesting? Support Converting Colors with the new Membership Option!

The pro membership hides all ads, plus gives you double the colors in the color bucket, and more awesome pro features!

[Learn more, Memberships starting at \\$2.50/m!](#)

**Follow me
on Twitter!**

@ConvertingColor