

# Converting Colors

Hex(F1376E)

Have a look what the booklet for  
Hex(F1376E) contains.

<b>Hex(F1376E)</b> .....	3
<i><b>Conversions</b></i> .....	4
<i><b>Details</b></i> .....	6
<i><b>Harmonies</b></i> .....	11
<i><b>Previews</b></i> .....	23
<i><b>Color Blindness Simulation</b></i> .....	26
<i><b>CSS Examples</b></i> .....	29

# Color

**Hex(F1376E)**

# Conversions

## Conversions Part 1

Format	Color
Hex	F1376E
RGB	241, 55, 110
RGB Percent	95%, 22%, 43%
CMY	0.0549, 0.7843, 0.5686
CMYK	0.00, 0.77, 0.54, 0.05
HSL	342°, 87%, 58%
HSV	342°, 77%, 95%
XYZ	40.4563, 22.5589, 16.9739
YIQ	116.8840, 93.2010, 56.5370

# Conversions

## Conversions Part 2

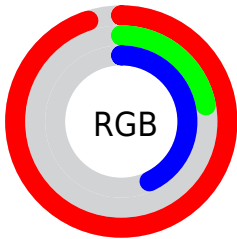
<b>Format</b>	<b>Color</b>
<b>R<sub>YB</sub></b>	241, 55, 110
Decimal	15808366
CIE <sub>Lab</sub>	54.62, 71.74, 14.11
CIE <sub>LCh</sub>	55, 73.113, 11.128
Yxy	22.5589, 0.5058, 0.2820
Android (android.graphics.Color)	4293998446 (0xFFFF1376E)
YUV	116.8840, -3.3938, 108.8497
Hunter-Lab	47.4963, 68.9240, 12.0587

# Details

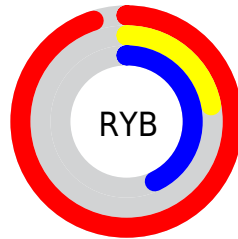
The Hex color **F1376E** is a dark color, and the websafe version is hex **FF3366**. The color can be described as middle washed rose. A complement of this color would be **37F1BA**, and the grayscale version is **757575**.

A 20% lighter version of the original color is **FF76A1**, and **B2003F** is the 20% darker color. If you saturate the color by 10%, you get **F11F5D**, and if you desaturate by 10%, it is **F14F7F**.

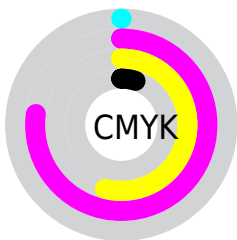
# Distribution



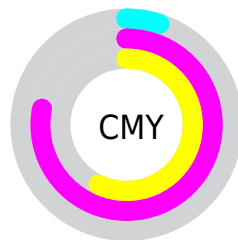
- Red (95%)
- Green (22%)
- Blue (43%)



- Red (95%)
- Yellow (22%)
- Blue (43%)



- Cyan (0%)
- Magenta (77%)
- Yellow (54%)
- Black (5%)



- Cyan (5%)
- Magenta (78%)
- Yellow (57%)

# Brightness & Saturation Gradients

These gradients show how the Hex color F1376E changes by changing the brightness by 10 percent. The first figure shows a shift by +10% for each color and the second figure -10%.

Similar to the brightness gradients but the following saturation gradients show a change of the Hex color F1376E by changing the saturation by 10% instead.



 F1376E

 F1376E

FFFFFF

 D10056

 FF76A1

 B2003F

 FF94BC

 93002A

 FFB1D8

 740016

 FFCFF4

 570002

 FFEDFF

 380002

 0E0000

 000000

 F1376E

 F1376E

 F11F5D

 F14F7F

 F1074C

 F16790

 F10047

 F17FA1

 F197B2

 F1AFC3

 F1C8D4

 F1E0E5

 F1F8F6

 F1FFFF

# Harmonies

## Analogous

The Analogous color harmony consists of three colors that are next to each other on the color wheel.



DE43AD



F1376E



E35131

# Triad

The Triadic color harmony groups three colors that are evenly spaced from another and form a triangle on the color wheel.



F1376E



3E950C



0095FB

# Complementary

The Complementary color scheme is a pair of colors which are on the opposite of each other on the color wheel.



F1376E



37F1BA

# Split Complementary

Split-complementary colors differ from the complementary color scheme. The scheme consists of three colors, the original color and two neighbors of the complement color.



009DD5



F1376E



009C57

# Square

The Square scheme is like the rectangle color scheme, but the four colors are evenly spaced on the color wheel.



F1376E



888700



009F99



0083FF

# Rectangle

The Rectangle color scheme consists of four colors that form a rectangle on the color wheel.



F1376E



CC6700



009F99



0098F2



# Sweetspot

The Sweet Spot groups the original color and five complimentary colors.



F1376E



FFC4D6



B937F1



805C66



000000



808080



# Same Dimension

The Same Dimension uses a secret algorithm to generate beautiful new colors.



F1376E



FF1258



F15C37



786C6F



B80036



380011



# Inverse Universe

The Inverse Universe completely reimagines the original color for something new.



F1376E



FF1258



37CCF1



786C6F



B80036

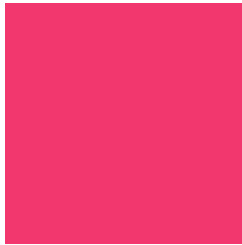


380011



# Previews

## White Background



This preview shows how the Hex color F1376E looks on a white background.

## Color Contrast Check

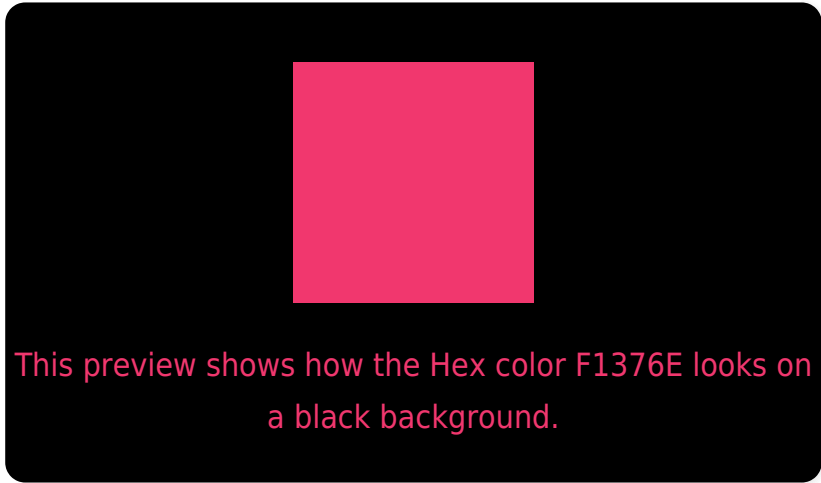
Large Text (above 18pt) WCAG AA ✓ Pass

Any Text WCAG AA × Fail

Large Text (above 18pt) WCAG AAA × Fail

Any Text WCAG AAA × Fail

# Black Background



## Color Contrast Check

Large Text (above 18pt) WCAG AA ✓ Pass

Any Text WCAG AA ✓ Pass

Large Text (above 18pt) WCAG AAA ✓ Pass

Any Text WCAG AAA × Fail

If you want to check with other color combinations, try the [Color Contrast Checker](#).



## Hex F1376E Background



This preview shows how black text looks on a background with the Hex color F1376E.

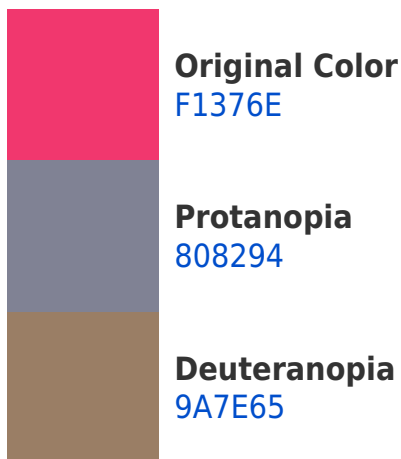


This preview shows how white text looks on a background with the Hex color F1376E.

# Color Blindness Simulation

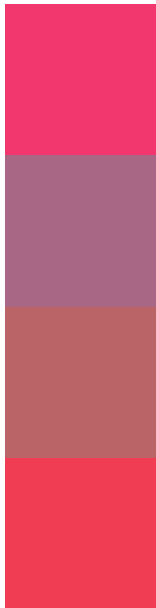
Color vision deficiency is a very complex topic, and I could not describe the different causes any better than Wikipedia does, so if you want to learn more, you should check out their [article about color blindness](#).

## Dichromacy





# Trichromacy



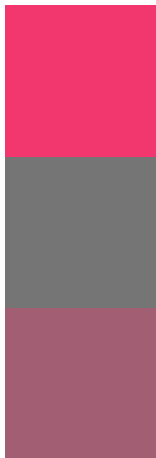
**Original Color**  
F1376E

**Protanomaly**  
A96786

**Deuteranomaly**  
BA6468

**Tritanomaly**  
F03D53

# Monochromacy



**Original Color**  
F1376E

**Achromatopsia**  
757575

**Achromatomaly**  
A25E72

# CSS Examples

## Text

The CSS property to change the color of the text to Hex F1376E is called "color". The color property can be set on classes, ids or directly on the HTML element.

This example shows how text in the color #F1376E looks like.

```
.text, #text, p{  
    color:#F1376E  
}
```

If you want to add a text shadow in that color use the text-shadow property, you can generate a text shadow directly with our [CSS Text Shadow Generator](#).

Here you see how black text with a 4 pixel #F1376E colored shadow looks like.

```
.shadow{ text-shadow: 4px 4px 2px #F1376E
}
```

## Border

The CSS property to change the border of an element to Hex F1376E is called "border". The border property can be set on classes, ids or directly on the HTML element.

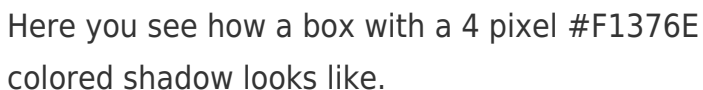
This example shows the color as border, it can be applied via the CSS property "border" or "border-color".

```
.border, #border, table{ border:4px solid
#F1376E }
```

If only the border color should be changed use the property `border-color`.

```
.border{ border-color:#F1376E }
```

If you want to add a box shadow in that color use:



Here you see how a box with a 4 pixel #F1376E colored shadow looks like.

```
.boxshadow{ -moz-box-shadow:4px 4px 4px  
4px #F1376E; -webkit-box-shadow:4px 4px  
4px 4px #F1376E; box-shadow:4px 4px 4px  
4px #F1376E }
```

# Background

The CSS property to change the background color of an element to Hex F1376E is called "background". The background property can be set on classes, ids or directly on the HTML element.

```
.background, #background, body{  
background:#F1376E }
```

If only the background color should be changed can be used:

```
.background{ background-color:#F1376E }
```

This example shows the color as background, it is applied via the CSS property "background".

To optimize and compress your CSS code, you can use our [online CSS compressor and optimizer](#) based on csstidy. If you want to create a linear or radial gradient as background or border, check our [CSS Gradient Generator](#).



Hey! You found this booklet interesting? Support Converting Colors with the new Membership Option!

The pro membership hides all ads, plus gives you double the colors in the color bucket, and more awesome pro features!

**[Learn more, Memberships starting at \\$2.50/m!](#)**

**Follow me  
on Twitter!**

@ConvertingColor