

Converting Colors

Hex(F13E72)

Have a look what the booklet for
Hex(F13E72) contains.

Hex(F13E72)	3
<i>Conversions</i>	4
<i>Details</i>	6
<i>Harmonies</i>	11
<i>Previews</i>	23
<i>Color Blindness Simulation</i>	26
<i>CSS Examples</i>	29

Color

Hex(F13E72)

Conversions

Conversions Part 1

Format	Color
Hex	F13E72
RGB	241, 62, 114
RGB Percent	95%, 24%, 45%
CMY	0.0549, 0.7569, 0.5529
CMYK	0.00, 0.74, 0.53, 0.05
HSL	343°, 86%, 59%
HSV	343°, 74%, 95%
XYZ	41.0355, 23.3609, 18.2659
YIQ	121.4490, 89.9920, 54.1200

Conversions

Conversions Part 2

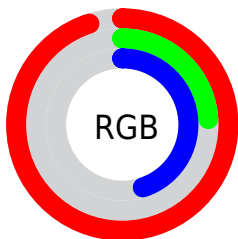
Format	Color
R_{YB}	241, 62, 114
Decimal	15810162
CIE _{Lab}	55.44, 69.96, 12.87
CIE _{LCh}	55, 71.134, 10.426
Yxy	23.3609, 0.4964, 0.2826
Android (android.graphics.Color)	4294000242 (0xFFFF13E72)
YUV	121.4490, -3.6724, 104.8462
Hunter-Lab	48.3331, 66.9660, 11.4265

Details

The Hex color **F13E72** is a dark color, and the websafe version is hex **FF3366**. The color can be described as middle washed rose. A complement of this color would be **3EF1BD**, and the grayscale version is **797979**.

A 20% lighter version of the original color is **FF7BA6**, and **B20043** is the 20% darker color. If you saturate the color by 10%, you get **F12661**, and if you desaturate by 10%, it is **F15683**.

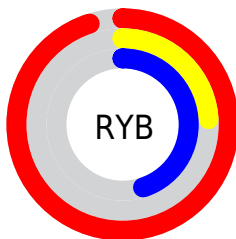
Distribution



Red (95%)

Green (24%)

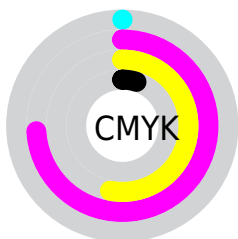
Blue (45%)



Red (95%)

Yellow (24%)

Blue (45%)

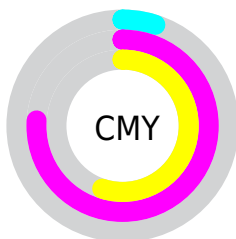


Cyan (0%)

Magenta (74%)

Yellow (53%)

Black (5%)



Cyan (5%)

Magenta (76%)

Yellow (55%)

Brightness & Saturation Gradients

These gradients show how the Hex color F13E72 changes by changing the brightness by 10 percent. The first figure shows a shift by +10% for each color and the second figure -10%.

Similar to the brightness gradients but the following saturation gradients show a change of the Hex color F13E72 by changing the saturation by 10% instead.

 F13E72

 F13E72

FFFFFF

 D2145A

 FF7BA6

 B20043

 FF99C1

 94002D

 FFB6DC

 750019

 FFD4F9

 570002

 FFF2FF

 3A0002

 110000

 000000

 F13E72

 F13E72

 F12661

 F15683

 F10E50

 F16E94

 F10046

 F186A5

 F19EB6

 F1B7C7

 F1CFD9

 F1E7EA

 F1FFFB

 F1FFFF

Harmonies

Analogous

The Analogous color harmony consists of three colors that are next to each other on the color wheel.



DD4AB0



F13E72



E45537

Triad

The Triadic color harmony groups three colors that are evenly spaced from another and form a triangle on the color wheel.



F13E72



469715



0097FA

Complementary

The Complementary color scheme is a pair of colors which are on the opposite of each other on the color wheel.



F13E72



3EF1BD

Split Complementary

Split-complementary colors differ from the complementary color scheme. The scheme consists of three colors, the original color and two neighbors of the complement color.



009FD4



F13E72



009E59

Square

The Square scheme is like the rectangle color scheme, but the four colors are evenly spaced on the color wheel.



F13E72



8C8900



00A099



0085FF

Rectangle

The Rectangle color scheme consists of four colors that form a rectangle on the color wheel.



F13E72



CE6909



00A099



009AF0

Sweetspot

The Sweet Spot groups the original color and five complimentary colors.



F13E72



FFC7D7



BB3EF1



805E68



000000



808080

Same Dimension

The Same Dimension uses a secret algorithm to generate beautiful new colors.



F13E72



FF1C5E



F1623E



786C6F



B80035



380010

Inverse Universe

The Inverse Universe completely reimagines the original color for something new.



F13E72



FF1C5E



3ECDF1



786C6F



B80035



380010

Previews

White Background



This preview shows how the Hex color F13E72 looks on a white background.

Color Contrast Check

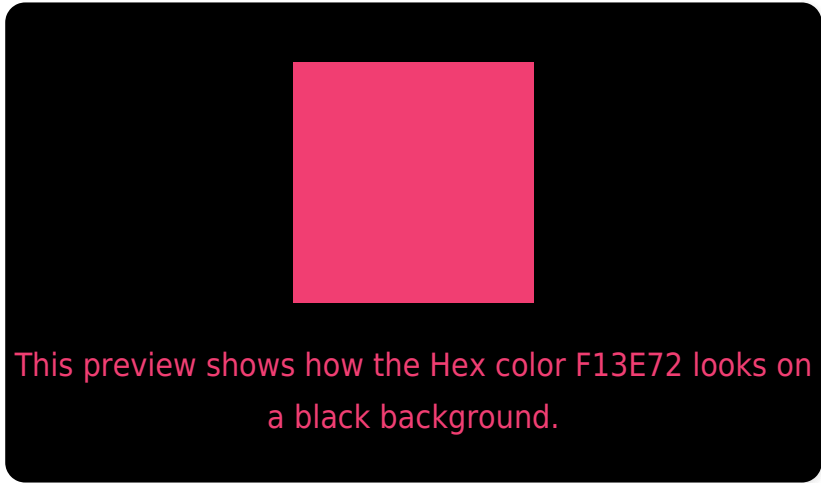
Large Text (above 18pt) WCAG AA ✓ Pass

Any Text WCAG AA ✗ Fail

Large Text (above 18pt) WCAG AAA ✗ Fail

Any Text WCAG AAA ✗ Fail

Black Background



Color Contrast Check

Large Text (above 18pt) WCAG AA ✓ Pass

Any Text WCAG AA ✓ Pass

Large Text (above 18pt) WCAG AAA ✓ Pass

Any Text WCAG AAA × Fail

If you want to check with other color combinations, try the [Color Contrast Checker](#).

Hex F13E72 Background



This preview shows how black text looks on a background with the Hex color F13E72.

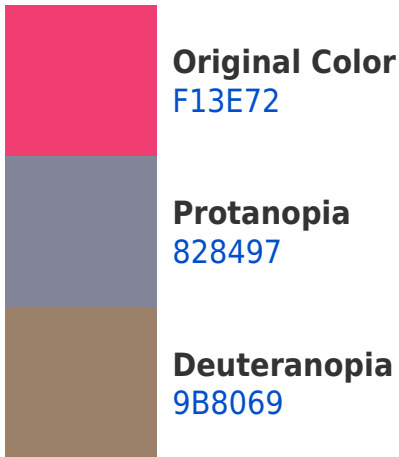


This preview shows how white text looks on a background with the Hex color F13E72.

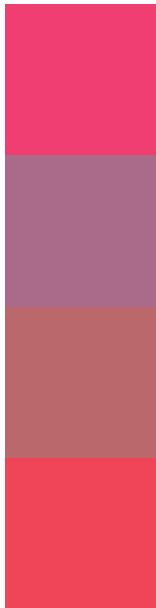
Color Blindness Simulation

Color vision deficiency is a very complex topic, and I could not describe the different causes any better than Wikipedia does, so if you want to learn more, you should check out their [article about color blindness](#).

Dichromacy



Trichromacy



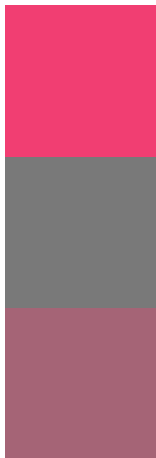
Original Color
F13E72

Protanomaly
AA6B8A

Deuteranomaly
BA686C

Tritanomaly
F04459

Monochromacy



Original Color
F13E72

Achromatopsia
797979

Achromatomaly
A56476

CSS Examples

Text

The CSS property to change the color of the text to Hex F13E72 is called "color". The color property can be set on classes, ids or directly on the HTML element.

This example shows how text in the color #F13E72 looks like.

```
.text, #text, p{  
    color:#F13E72  
}
```

If you want to add a text shadow in that color use the text-shadow property, you can generate a text shadow directly with our [CSS Text Shadow Generator](#).

Here you see how black text with a 4 pixel #F13E72 colored shadow looks like.

```
.shadow{ text-shadow: 4px 4px 2px #F13E72
}
```

Border

The CSS property to change the border of an element to Hex F13E72 is called "border". The border property can be set on classes, ids or directly on the HTML element.

This example shows the color as border, it can be applied via the CSS property "border" or "border-color".

```
.border, #border, table{ border:4px solid
#F13E72 }
```

If only the border color should be changed use the property `border-color`.

```
.border{ border-color:#F13E72 }
```

If you want to add a box shadow in that color use:

Here you see how a box with a 4 pixel #F13E72 colored shadow looks like.

```
.boxshadow{ -moz-box-shadow:4px 4px 4px  
4px #F13E72; -webkit-box-shadow:4px 4px  
4px 4px #F13E72; box-shadow:4px 4px 4px  
4px #F13E72 }
```

Background

The CSS property to change the background color of an element to Hex F13E72 is called "background". The background property can be set on classes, ids or directly on the HTML element.

```
.background, #background, body{  
background:#F13E72 }
```

If only the background color should be changed can be used:

```
.background{ background-color:#F13E72 }
```

This example shows the color as background, it is applied via the CSS property "background".

To optimize and compress your CSS code, you can use our [online CSS compressor and optimizer](#) based on csstidy. If you want to create a linear or radial gradient as background or border, check our [CSS Gradient Generator](#).

Hey! You found this booklet interesting? Support Converting Colors with the new Membership Option!

The pro membership hides all ads, plus gives you double the colors in the color bucket, and more awesome pro features!

[Learn more, Memberships starting at \\$2.50/m!](#)

**Follow me
on Twitter!**

@ConvertingColor