

Converting Colors

Hex(F14E85)

Have a look what the booklet for
Hex(F14E85) contains.

Hex(F14E85)	3
<i>Conversions</i>	4
<i>Details</i>	6
<i>Harmonies</i>	11
<i>Previews</i>	23
<i>Color Blindness Simulation</i>	26
<i>CSS Examples</i>	29

Color

Hex(F14E85)

Conversions

Conversions Part 1

Format	Color
Hex	F14E85
RGB	241, 78, 133
RGB Percent	95%, 31%, 52%
CMY	0.0549, 0.6941, 0.4784
CMYK	0.00, 0.68, 0.45, 0.05
HSL	340°, 85%, 63%
HSV	340°, 68%, 95%
XYZ	43.2337, 25.8430, 24.8998
YIQ	133.0070, 79.4930, 51.6610

Conversions

Conversions Part 2

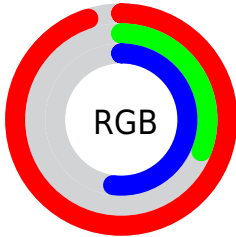
Format	Color
R _{YB}	241, 78, 133
Decimal	15814277
CIE _{Lab}	57.89, 66.05, 5.09
CIE _{LCh}	58, 66.245, 4.405
Y _{xy}	25.8430, 0.4600, 0.2750
Android (android.graphics.Color)	4294004357 (0xFFFF14E85)
Y _{UV}	133.0070, -0.0035, 94.7099
Hunter-Lab	50.8360, 62.8429, 6.5446

Details

The Hex color **F14E85** is a light color, and the websafe version is hex **FF6699**. The color can be described as light washed rose. A complement of this color would be **4EF1BA**, and the grayscale version is **858585**.

A 20% lighter version of the original color is **FF88BA**, and **B40054** is the 20% darker color. If you saturate the color by 10%, you get **F13675**, and if you desaturate by 10%, it is **F16695**.

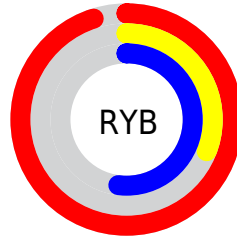
Distribution



Red (95%)

Green (31%)

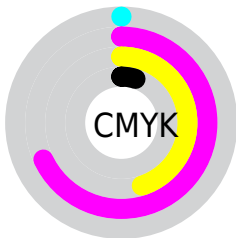
Blue (52%)



Red (95%)

Yellow (31%)

Blue (52%)

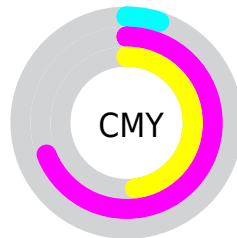


Cyan (0%)

Magenta (68%)

Yellow (45%)

Black (5%)



Cyan (5%)

Magenta (69%)

Yellow (48%)

Brightness & Saturation Gradients

These gradients show how the Hex color F14E85 changes by changing the brightness by 10 percent. The first figure shows a shift by +10% for each color and the second figure -10%.

Similar to the brightness gradients but the following saturation gradients show a change of the Hex color F14E85 by changing the saturation by 10% instead.

 F14E85

 F14E85

FFFFFF

 D22D6C

 FF88BA

 B40054

 FFA5D6

 95003D

 FFC2F2

 780028

 FFE0FF

 5A0013

FFFEFF

 3F0003

 1B0001

 000000

 F14E85

 F14E85

 F13675

 F16695

 F11E65

 F17EA5

 F10655

 F196B5

 F10051

 F1AEC5

 F1C7D5

 F1DFE5

 F1F7F5

 F1FFFF

Harmonies

Analogous

The Analogous color harmony consists of three colors that are next to each other on the color wheel.



D75CBE



F14E85



EB5C4D

Triad

The Triadic color harmony groups three colors that are evenly spaced from another and form a triangle on the color wheel.



F14E85



639A1D



009EF3

Complementary

The Complementary color scheme is a pair of colors which are on the opposite of each other on the color wheel.



F14E85



4EF1BA

Split Complementary

Split-complementary colors differ from the complementary color scheme. The scheme consists of three colors, the original color and two neighbors of the complement color.



00A5CB



F14E85



00A256

Square

The Square scheme is like the rectangle color scheme, but the four colors are evenly spaced on the color wheel.



F14E85



9F8B00



00A692



008FFF

Rectangle

The Rectangle color scheme consists of four colors that form a rectangle on the color wheel.



F14E85



D96D2B



00A692



00A1E9

Sweetspot

The Sweet Spot groups the original color and five complimentary colors.



F14E85



FFCCDD



B84EF1



80616B



000000



808080

Same Dimension

The Same Dimension uses a secret algorithm to generate beautiful new colors.



F14E85



FF3076



F1664E



786C70



B8003E



380013

Inverse Universe

The Inverse Universe completely reimagines the original color for something new.



F14E85



FF3076



4ED9F1



786C70



B8003E



380013

Previews

White Background



This preview shows how the Hex color F14E85 looks on a white background.

Color Contrast Check

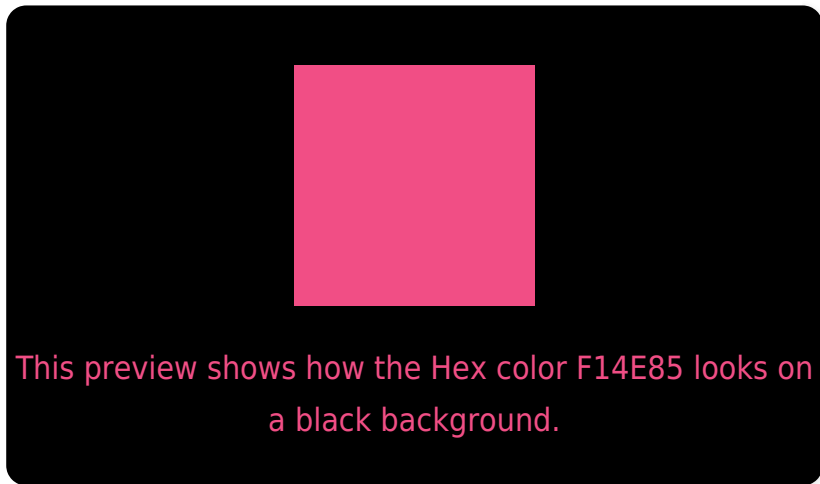
Large Text (above 18pt) WCAG AA ✓ Pass

Any Text WCAG AA × Fail

Large Text (above 18pt) WCAG AAA × Fail

Any Text WCAG AAA × Fail

Black Background



Color Contrast Check

Large Text (above 18pt) WCAG AA ✓ Pass

Any Text WCAG AA ✓ Pass

Large Text (above 18pt) WCAG AAA ✓ Pass

Any Text WCAG AAA × Fail

If you want to check with other color combinations, try the [Color Contrast Checker](#).

Hex F14E85 Background



This preview shows how black text looks on a background with the Hex color F14E85.

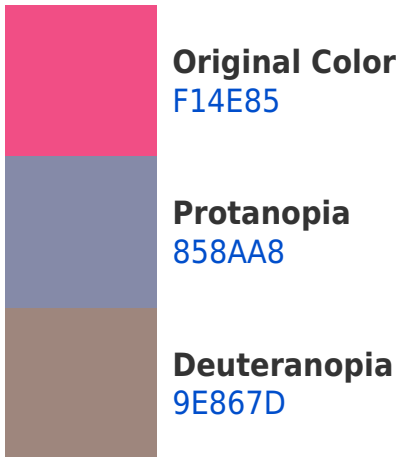


This preview shows how white text looks on a background with the Hex color F14E85.

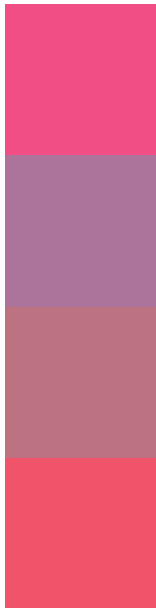
Color Blindness Simulation

Color vision deficiency is a very complex topic, and I could not describe the different causes any better than Wikipedia does, so if you want to learn more, you should check out their [article about color blindness](#).

Dichromacy



Trichromacy



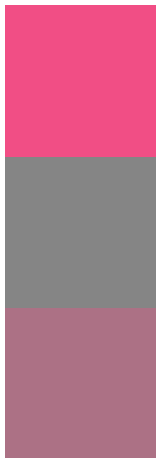
Original Color
F14E85

Protanomaly
AC749B

Deuteranomaly
BC7280

Tritanomaly
EF546B

Monochromacy



Original Color
F14E85

Achromatopsia
858585

Achromatomaly
AC7185

CSS Examples

Text

The CSS property to change the color of the text to Hex F14E85 is called "color". The color property can be set on classes, ids or directly on the HTML element.

This example shows how text in the color #F14E85 looks like.

```
.text, #text, p{  
    color:#F14E85  
}
```

If you want to add a text shadow in that color use the text-shadow property, you can generate a text shadow directly with our [CSS Text Shadow Generator](#).

Here you see how black text with a 4 pixel #F14E85 colored shadow looks like.

```
.shadow{ text-shadow: 4px 4px 2px #F14E85
}
```

Border

The CSS property to change the border of an element to Hex F14E85 is called "border". The border property can be set on classes, ids or directly on the HTML element.

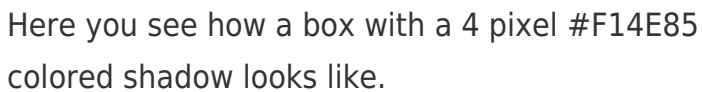
This example shows the color as border, it can be applied via the CSS property "border" or "border-color".

```
.border, #border, table{ border:4px solid
#F14E85 }
```

If only the border color should be changed use the property `border-color`.

```
.border{ border-color:#F14E85 }
```

If you want to add a box shadow in that color use:



Here you see how a box with a 4 pixel #F14E85 colored shadow looks like.

```
.boxshadow{ -moz-box-shadow:4px 4px 4px  
4px #F14E85; -webkit-box-shadow:4px 4px  
4px 4px #F14E85; box-shadow:4px 4px 4px  
4px #F14E85 }
```

Background

The CSS property to change the background color of an element to Hex F14E85 is called "background". The background property can be set on classes, ids or directly on the HTML element.

```
.background, #background, body{  
background:#F14E85 }
```

If only the background color should be changed can be used:

```
.background{ background-color:#F14E85 }
```

This example shows the color as background, it is applied via the CSS property "background".

To optimize and compress your CSS code, you can use our [online CSS compressor and optimizer](#) based on csstidy. If you want to create a linear or radial gradient as background or border, check our [CSS Gradient Generator](#).

Hey! You found this booklet interesting? Support Converting Colors with the new Membership Option!

The pro membership hides all ads, plus gives you double the colors in the color bucket, and more awesome pro features!

[Learn more, Memberships starting at \\$2.50/m!](#)

**Follow me
on Twitter!**

@ConvertingColor