

Converting Colors

Hex(F1508F)

Have a look what the booklet for
Hex(F1508F) contains.

Hex(F1508F)	3
<i>Conversions</i>	4
<i>Details</i>	6
<i>Harmonies</i>	11
<i>Previews</i>	23
<i>Color Blindness Simulation</i>	26
<i>CSS Examples</i>	29

Color

Hex(F1508F)

Conversions

Conversions Part 1

Format	Color
Hex	F1508F
RGB	241, 80, 143
RGB Percent	95%, 31%, 56%
CMY	0.0549, 0.6863, 0.4392
CMYK	0.00, 0.67, 0.41, 0.05
HSL	337°, 85%, 63%
HSV	337°, 67%, 95%
XYZ	44.1022, 26.4213, 28.7620
YIQ	135.3210, 75.7330, 53.7250

Conversions

Conversions Part 2

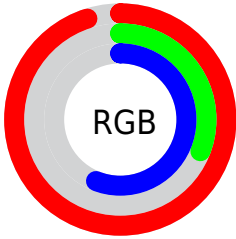
Format	Color
R _Y B	241, 80, 143
Decimal	15814799
CIE Lab	58.43, 66.25, 0.01
CIE LCh	58, 66.249, 0.008
Yxy	26.4213, 0.4442, 0.2661
Android (android.graphics.Color)	4294004879 (0xFFFF1508F)
YUV	135.3210, 3.7857, 92.6805
Hunter-Lab	51.4016, 63.1989, 2.8052

Details

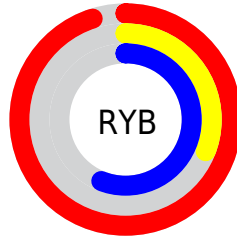
The Hex color **F1508F** is a light color, and the websafe version is hex **FF6699**. The color can be described as light muted rose. A complement of this color would be **50F1B2**, and the grayscale version is **878787**.

A 20% lighter version of the original color is **FF8AC5**, and **B4005D** is the 20% darker color. If you saturate the color by 10%, you get **F13880**, and if you desaturate by 10%, it is **F1689E**.

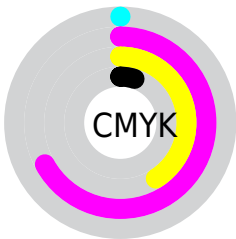
Distribution



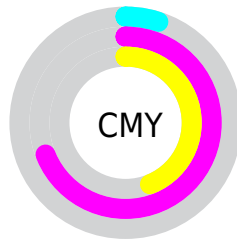
- Red (95%)
- Green (31%)
- Blue (56%)



- Red (95%)
- Yellow (31%)
- Blue (56%)



- Cyan (0%)
- Magenta (67%)
- Yellow (41%)
- Black (5%)




- Cyan (5%)
- Magenta (69%)
- Yellow (44%)

Brightness & Saturation Gradients

These gradients show how the Hex color F1508F changes by changing the brightness by 10 percent. The first figure shows a shift by +10% for each color and the second figure -10%.

Similar to the brightness gradients but the following saturation gradients show a change of the Hex color F1508F by changing the saturation by 10% instead.

 F1508F

 F1508F

FFFFFF

 D23075

 FF8AC5

 B4005D

 FFA7E0

 960046

 FFC4FD

 78002F

 FFE2FF

 5B001B

 410003

 1E0001

 000000

 F1508F

 F1508F

 F13880

 F1689E

 F12072

 F180AC

 F10863

 F198BB

 F1005E

 F1B0CA

 F1C9D8

 F1E1E7

 F1F9F6

 F1FFFF

Harmonies

Analogous

The Analogous color harmony consists of three colors that are next to each other on the color wheel.



D261C8



F1508F



F05A56

Triad

The Triadic color harmony groups three colors that are evenly spaced from another and form a triangle on the color wheel.



F1508F



6E9A15



00A1F1

Complementary

The Complementary color scheme is a pair of colors which are on the opposite of each other on the color wheel.



F1508F



50F1B2

Split Complementary

Split-complementary colors differ from the complementary color scheme. The scheme consists of three colors, the original color and two neighbors of the complement color.



00A7C5



F1508F



00A34F

Square

The Square scheme is like the rectangle color scheme, but the four colors are evenly spaced on the color wheel.



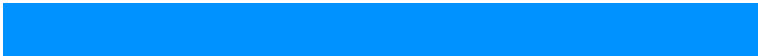
F1508F



A88A00



00A78B



0093FF

Rectangle

The Rectangle color scheme consists of four colors that form a rectangle on the color wheel.



F1508F



E06A33



00A78B



00A4E5

Sweetspot

The Sweet Spot groups the original color and five complimentary colors.



F1508F



FFCCE0



B150F1



80616D



000000



808080

Same Dimension

The Same Dimension uses a secret algorithm to generate beautiful new colors.



F1508F



FF3383



F16050



786C71



B80048



380016

Inverse Universe

The Inverse Universe completely reimagines the original color for something new.



F1508F



FF3383



50E1F1



786C71



B80048



380016

Previews

White Background



This preview shows how the Hex color F1508F looks on a white background.

Color Contrast Check

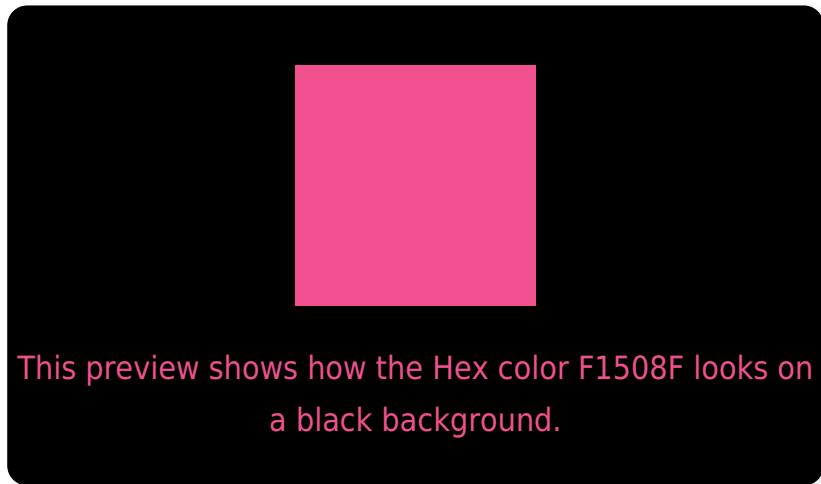
Large Text (above 18pt) WCAG AA ✓ Pass

Any Text WCAG AA × Fail

Large Text (above 18pt) WCAG AAA × Fail

Any Text WCAG AAA × Fail

Black Background



Color Contrast Check

Large Text (above 18pt) WCAG AA ✓ Pass

Any Text WCAG AA ✓ Pass

Large Text (above 18pt) WCAG AAA ✓ Pass

Any Text WCAG AAA × Fail

If you want to check with other color combinations, try the [Color Contrast Checker](#).

Hex F1508F Background



This preview shows how black text looks on a background with the Hex color F1508F.



This preview shows how white text looks on a background with the Hex color F1508F.

Color Blindness Simulation

Color vision deficiency is a very complex topic, and I could not describe the different causes any better than Wikipedia does, so if you want to learn more, you should check out their [article about color blindness](#).

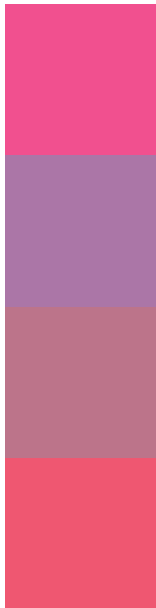
Dichromacy





Tritanopia
EE5B60

Trichromacy



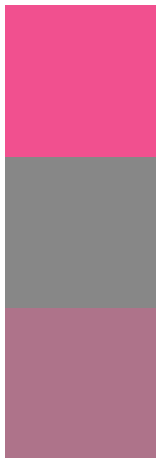
Original Color
F1508F

Protanomaly
AB76A7

Deuteranomaly
BC748A

Tritanomaly
EF5771

Monochromacy



Original Color
F1508F

Achromatopsia
878787

Achromatomaly
AE738A

CSS Examples

Text

The CSS property to change the color of the text to Hex F1508F is called "color". The color property can be set on classes, ids or directly on the HTML element.

This example shows how text in the color #F1508F looks like.

```
.text, #text, p{  
    color:#F1508F  
}
```

If you want to add a text shadow in that color use the text-shadow property, you can generate a text shadow directly with our [CSS Text Shadow Generator](#).

Here you see how black text with a 4 pixel #F1508F colored shadow looks like.

```
.shadow{ text-shadow: 4px 4px 2px #F1508F
}
```

Border

The CSS property to change the border of an element to Hex F1508F is called "border". The border property can be set on classes, ids or directly on the HTML element.

This example shows the color as border, it can be applied via the CSS property "border" or "border-color".

```
.border, #border, table{ border:4px solid
#F1508F }
```

If only the border color should be changed use the property `border-color`.

```
.border{ border-color:#F1508F }
```

If you want to add a box shadow in that color use:

Here you see how a box with a 4 pixel #F1508F colored shadow looks like.

```
.boxshadow{ -moz-box-shadow:4px 4px 4px  
4px #F1508F; -webkit-box-shadow:4px 4px  
4px 4px #F1508F; box-shadow:4px 4px 4px  
4px #F1508F }
```

Background

The CSS property to change the background color of an element to Hex F1508F is called "background". The background property can be set on classes, ids or directly on the HTML element.

```
.background, #background, body{  
background:#F1508F }
```

If only the background color should be changed can be used:

```
.background{ background-color:#F1508F }
```

This example shows the color as background, it is applied via the CSS property "background".

To optimize and compress your CSS code, you can use our [online CSS compressor and optimizer](#) based on csstidy. If you want to create a linear or radial gradient as background or border, check our [CSS Gradient Generator](#).

Hey! You found this booklet interesting? Support Converting Colors with the new Membership Option!

The pro membership hides all ads, plus gives you double the colors in the color bucket, and more awesome pro features!

[Learn more, Memberships starting at \\$2.50/m!](#)

**Follow me
on Twitter!**

@ConvertingColor