

Converting Colors

Hex(F15984)

Have a look what the booklet for
Hex(F15984) contains.

Hex(F15984)	3
<i>Conversions</i>	4
<i>Details</i>	6
<i>Harmonies</i>	11
<i>Previews</i>	23
<i>Color Blindness Simulation</i>	26
<i>CSS Examples</i>	29

Color

Hex(F15984)

Conversions

Conversions Part 1

Format	Color
Hex	F15984
RGB	241, 89, 132
RGB Percent	95%, 35%, 52%
CMY	0.0549, 0.6510, 0.4824
CMYK	0.00, 0.63, 0.45, 0.05
HSL	343°, 84%, 65%
HSV	343°, 63%, 95%
XYZ	44.0129, 27.5115, 24.8203
YIQ	139.3500, 76.7890, 45.5970

Conversions

Conversions Part 2

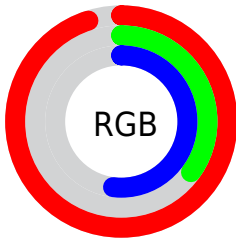
Format	Color
R_{YB}	241, 89, 132
Decimal	15817092
CIE _{Lab}	59.44, 61.63, 7.90
CIE _{LCh}	59, 62.139, 7.307
Yxy	27.5115, 0.4568, 0.2856
Android (android.graphics.Color)	4294007172 (0xFF15984)
YUV	139.3500, -3.6235, 89.1471
Hunter-Lab	52.4514, 57.9925, 8.6596

Details

The Hex color **F15984** is a light color, and the websafe version is hex **FF6699**. The color can be described as light muted rose. A complement of this color would be **59F1C6**, and the grayscale version is **8B8B8B**.

A 20% lighter version of the original color is **FF92B9**, and **B41753** is the 20% darker color. If you saturate the color by 10%, you get **F14173**, and if you desaturate by 10%, it is **F17195**.

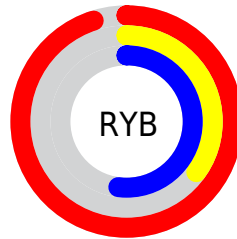
Distribution



Red (95%)

Green (35%)

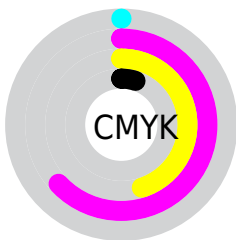
Blue (52%)



Red (95%)

Yellow (35%)

Blue (52%)

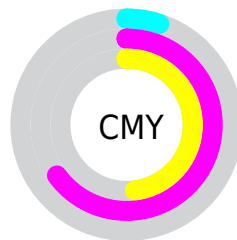


Cyan (0%)

Magenta (63%)

Yellow (45%)

Black (5%)



Cyan (5%)

Magenta (65%)

Yellow (48%)

Brightness & Saturation Gradients

These gradients show how the Hex color F15984 changes by changing the brightness by 10 percent. The first figure shows a shift by +10% for each color and the second figure -10%.

Similar to the brightness gradients but the following saturation gradients show a change of the Hex color F15984 by changing the saturation by 10% instead.

 F15984

 F15984

FFFFFF

 D23B6B

 FF92B9

 B41753

 FFAED4

 96003C

 FFCBF1

 780027

 FFE9FF

 5B0012

 400003

 1E0001

 000000

 F15984

 F15984

 F14173

 F17195

 F12961

 F189A7

 F11150

 F1A1B8

 F10044

 F1B9C9

 F1D1DA

 F1EAEC

 F1FFFD

 F1FFFF

Harmonies

Analogous

The Analogous color harmony consists of three colors that are next to each other on the color wheel.



DB63BA



F15984



EA6650

Triad

The Triadic color harmony groups three colors that are evenly spaced from another and form a triangle on the color wheel.



F15984



649E30



00A0F4

Complementary

The Complementary color scheme is a pair of colors which are on the opposite of each other on the color wheel.



F15984



59F1C6

Split Complementary

Split-complementary colors differ from the complementary color scheme. The scheme consists of three colors, the original color and two neighbors of the complement color.



00A7D0



F15984



00A663

Square

The Square scheme is like the rectangle color scheme, but the four colors are evenly spaced on the color wheel.



F15984



9E910C



00A99B



1991FC

Rectangle

The Rectangle color scheme consists of four colors that form a rectangle on the color wheel.



F15984



D77531



00A99B



00A3EB

Sweetspot

The Sweet Spot groups the original color and five complimentary colors.



F15984



FFCFDC



C659F1



80626A



000000



808080

Same Dimension

The Same Dimension uses a secret algorithm to generate beautiful new colors.



F15984



FF3D74



F17A59



786C6F



B80034



380010

Inverse Universe

The Inverse Universe completely reimagines the original color for something new.



F15984



FF3D74



59D0F1



786C6F



B80034



380010

Previews

White Background



This preview shows how the Hex color F15984 looks on a white background.

Color Contrast Check

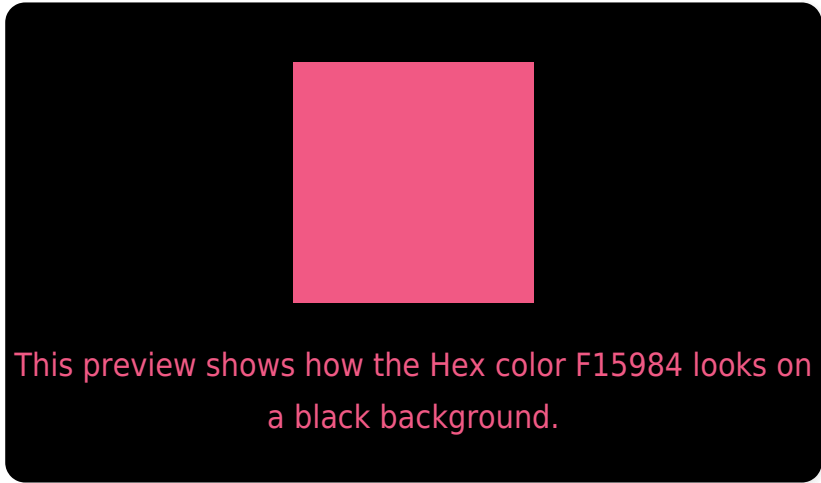
Large Text (above 18pt) WCAG AA ✓ Pass

Any Text WCAG AA × Fail

Large Text (above 18pt) WCAG AAA × Fail

Any Text WCAG AAA × Fail

Black Background



Color Contrast Check

Large Text (above 18pt) WCAG AA ✓ Pass

Any Text WCAG AA ✓ Pass

Large Text (above 18pt) WCAG AAA ✓ Pass

Any Text WCAG AAA × Fail

If you want to check with other color combinations, try the [Color Contrast Checker](#).

Hex F15984 Background



This preview shows how black text looks on a background with the Hex color F15984.

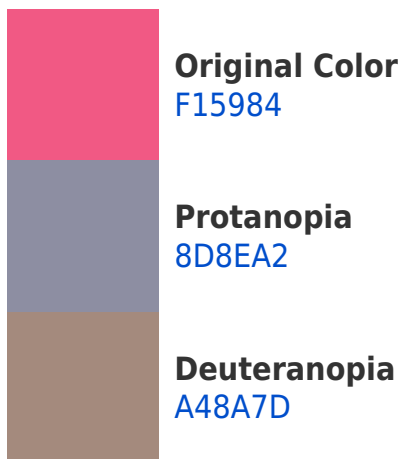


This preview shows how white text looks on a background with the Hex color F15984.

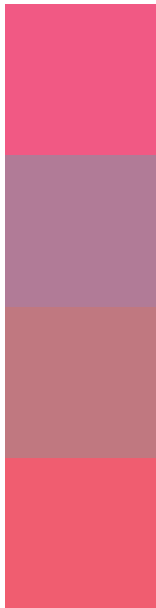
Color Blindness Simulation

Color vision deficiency is a very complex topic, and I could not describe the different causes any better than Wikipedia does, so if you want to learn more, you should check out their [article about color blindness](#).

Dichromacy



Trichromacy



Original Color
F15984

Protanomaly
B17B97

Deuteranomaly
C07880

Tritanomaly
F05D70

Monochromacy



Original Color
F15984

Achromatopsia
8B8B8B

Achromatomaly
B07988

CSS Examples

Text

The CSS property to change the color of the text to Hex F15984 is called "color". The color property can be set on classes, ids or directly on the HTML element.

This example shows how text in the color #F15984 looks like.

```
.text, #text, p{  
    color:#F15984  
}
```

If you want to add a text shadow in that color use the text-shadow property, you can generate a text shadow directly with our [CSS Text Shadow Generator](#).

Here you see how black text with a 4 pixel #F15984 colored shadow looks like.

```
.shadow{ text-shadow: 4px 4px 2px #F15984
}
```

Border

The CSS property to change the border of an element to Hex F15984 is called "border". The border property can be set on classes, ids or directly on the HTML element.

This example shows the color as border, it can be applied via the CSS property "border" or "border-color".

```
.border, #border, table{ border:4px solid
#F15984 }
```

If only the border color should be changed use the property `border-color`.

```
.border{ border-color:#F15984 }
```

If you want to add a box shadow in that color use:

Here you see how a box with a 4 pixel #F15984 colored shadow looks like.

```
.boxshadow{ -moz-box-shadow:4px 4px 4px  
4px #F15984; -webkit-box-shadow:4px 4px  
4px 4px #F15984; box-shadow:4px 4px 4px  
4px #F15984 }
```

Background

The CSS property to change the background color of an element to Hex F15984 is called "background". The background property can be set on classes, ids or directly on the HTML element.

```
.background, #background, body{  
background:#F15984 }
```

If only the background color should be changed can be used:

```
.background{ background-color:#F15984 }
```

This example shows the color as background, it is applied via the CSS property "background".

To optimize and compress your CSS code, you can use our [online CSS compressor and optimizer](#) based on csstidy. If you want to create a linear or radial gradient as background or border, check our [CSS Gradient Generator](#).

Hey! You found this booklet interesting? Support Converting Colors with the new Membership Option!

The pro membership hides all ads, plus gives you double the colors in the color bucket, and more awesome pro features!

[Learn more, Memberships starting at \\$2.50/m!](#)

**Follow me
on Twitter!**

@ConvertingColor