

Converting Colors

Hex(F1744F)

Have a look what the booklet for
Hex(F1744F) contains.

Hex(F1744F)	3
<i>Conversions</i>	4
<i>Details</i>	6
<i>Harmonies</i>	11
<i>Previews</i>	23
<i>Color Blindness Simulation</i>	26
<i>CSS Examples</i>	29

Color

Hex(F1744F)

Conversions

Conversions Part 1

Format	Color
Hex	F1744F
RGB	241, 116, 79
RGB Percent	95%, 45%, 31%
CMY	0.0549, 0.5451, 0.6902
CMYK	0.00, 0.52, 0.67, 0.05
HSL	14°, 85%, 63%
HSV	14°, 67%, 95%
XYZ	43.9323, 31.7561, 11.2112
YIQ	149.1570, 86.3770, 14.9930

Conversions

Conversions Part 2

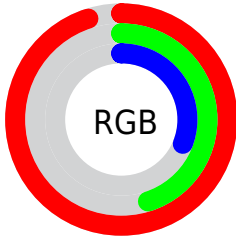
Format	Color
RYB	241, 127, 79
Decimal	15823951
CIELab	63.14, 45.47, 42.71
CIElCh	63, 62.381, 43.208
Yxy	31.7561, 0.5056, 0.3654
Android (android.graphics.Color)	4294014031 (0xFFFF1744F)
YUV	149.1570, -34.5874, 80.5463
Hunter-Lab	56.3525, 40.5413, 27.6512

Details

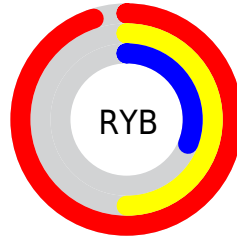
The Hex color **F1744F** is a dark color, and the websafe version is hex **CC6633**. The color can be described as middle washed orange. A complement of this color would be **4FCCF1**, and the grayscale version is **959595**.

A 20% lighter version of the original color is **FFAA81**, and **B33F20** is the 20% darker color. If you saturate the color by 10%, you get **F16137**, and if you desaturate by 10%, it is **F18767**.

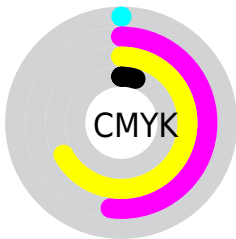
Distribution



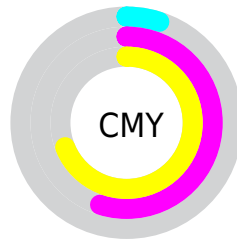
- Red (95%)
- Green (45%)
- Blue (31%)



- Red (95%)
- Yellow (50%)
- Blue (31%)



- Cyan (0%)
- Magenta (52%)
- Yellow (67%)
- Black (5%)



- Cyan (5%)
- Magenta (55%)
- Yellow (69%)

Brightness & Saturation Gradients

These gradients show how the Hex color F1744F changes by changing the brightness by 10 percent. The first figure shows a shift by +10% for each color and the second figure -10%.

Similar to the brightness gradients but the following saturation gradients show a change of the Hex color F1744F by changing the saturation by 10% instead.

 F1744F

 F1744F

FFFFFF

 D25A37

 FFAA81

 B33F20

 FFC79C

 942408

 FFE3B7

 770000

 FFFFD3

 590000

 FFFFEE

 3D0001

 1D0001

 000000

 F1744F

 F1744F

 F16137

 F18767

 F14F1F

 F1997F

 F13C07

 F1AC97

 F13700

 F1BEAF

 F1D1C8

 F1E4E0

 F1F6F8

 F1FFFF

Harmonies

Analogous

The Analogous color harmony consists of three colors that are next to each other on the color wheel.



FE6483



F1744F



CF8B26

Triad

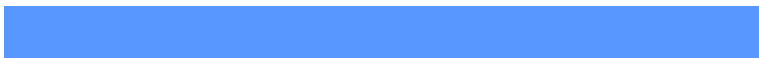
The Triadic color harmony groups three colors that are evenly spaced from another and form a triangle on the color wheel.



F1744F



00B177



5897FF

Complementary

The Complementary color scheme is a pair of colors which are on the opposite of each other on the color wheel.



F1744F



4FCCF1

Split Complementary

Split-complementary colors differ from the complementary color scheme. The scheme consists of three colors, the original color and two neighbors of the complement color.



00A8FF



F1744F



00B3B1

Square

The Square scheme is like the rectangle color scheme, but the four colors are evenly spaced on the color wheel.



F1744F



5FAA42



00B1E4



BB7FEA

Rectangle

The Rectangle color scheme consists of four colors that form a rectangle on the color wheel.



F1744F



B0981A



00B1E4



009DFF

Sweetspot

The Sweet Spot groups the original color and five complimentary colors.



F1744F



FFD8CC



F14FCE



806861



000000



808080

Same Dimension

The Same Dimension uses a secret algorithm to generate beautiful new colors.



F1744F



FF6030



F1C34F



786F6C



B82A00



380D00

Inverse Universe

The Inverse Universe completely reimagines the original color for something new.



4FCCF1



30D0FF



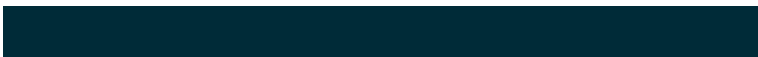
4F7DF1



6C7578



008EB8



002B38

Previews

White Background



This preview shows how the Hex color F1744F looks on a white background.

Color Contrast Check

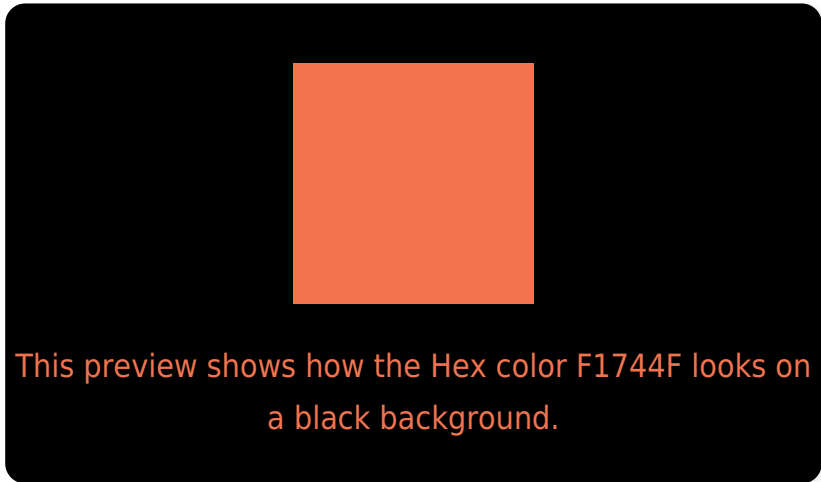
Large Text (above 18pt) WCAG AA × Fail

Any Text WCAG AA × Fail

Large Text (above 18pt) WCAG AAA × Fail

Any Text WCAG AAA × Fail

Black Background



Color Contrast Check

Large Text (above 18pt) WCAG AA ✓ Pass

Any Text WCAG AA ✓ Pass

Large Text (above 18pt) WCAG AAA ✓ Pass

Any Text WCAG AAA ✓ Pass

If you want to check with other color combinations, try the [Color Contrast Checker](#).

Hex F1744F Background



This preview shows how black text looks on a background with the Hex color F1744F.

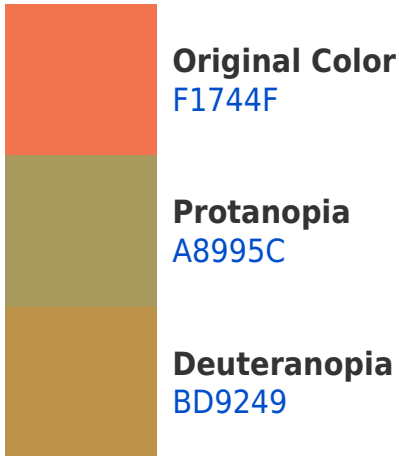


This preview shows how white text looks on a background with the Hex color F1744F.

Color Blindness Simulation

Color vision deficiency is a very complex topic, and I could not describe the different causes any better than Wikipedia does, so if you want to learn more, you should check out their [article about color blindness](#).

Dichromacy





Tritanopia
F36F77

Trichromacy



Original Color
F1744F



Protanomaly
C38C57



Deuteranomaly
D0874B



Tritanomaly
F27168

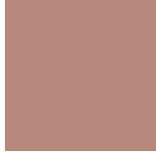
Monochromacy



Original Color
F1744F



Achromatopsia
959595



Achromatomaly
B6897C

CSS Examples

Text

The CSS property to change the color of the text to Hex F1744F is called "color". The color property can be set on classes, ids or directly on the HTML element.

This example shows how text in the color #F1744F looks like.

```
.text, #text, p{  
    color:#F1744F  
}
```

If you want to add a text shadow in that color use the text-shadow property, you can generate a text shadow directly with our [CSS Text Shadow Generator](#).

Here you see how black text with a 4 pixel #F1744F colored shadow looks like.

```
.shadow{ text-shadow: 4px 4px 2px #F1744F
}
```

Border

The CSS property to change the border of an element to Hex F1744F is called "border". The border property can be set on classes, ids or directly on the HTML element.

This example shows the color as border, it can be applied via the CSS property "border" or "border-color".

```
.border, #border, table{ border:4px solid
#F1744F }
```

If only the border color should be changed use the property `border-color`.

```
.border{ border-color:#F1744F }
```

If you want to add a box shadow in that color use:

Here you see how a box with a 4 pixel #F1744F colored shadow looks like.

```
.boxshadow{ -moz-box-shadow:4px 4px 4px  
4px #F1744F; -webkit-box-shadow:4px 4px  
4px 4px #F1744F; box-shadow:4px 4px 4px  
4px #F1744F }
```

Background

The CSS property to change the background color of an element to Hex F1744F is called "background". The background property can be set on classes, ids or directly on the HTML element.

```
.background, #background, body{  
background:#F1744F }
```

If only the background color should be changed can be used:

```
.background{ background-color:#F1744F }
```

This example shows the color as background, it is applied via the CSS property "background".

To optimize and compress your CSS code, you can use our [online CSS compressor and optimizer](#) based on csstidy. If you want to create a linear or radial gradient as background or border, check our [CSS Gradient Generator](#).

Hey! You found this booklet interesting? Support Converting Colors with the new Membership Option!

The pro membership hides all ads, plus gives you double the colors in the color bucket, and more awesome pro features!

[Learn more, Memberships starting at \\$2.50/m!](#)

**Follow me
on Twitter!**

@ConvertingColor