

Converting Colors

Hex(F18195)

Have a look what the booklet for
Hex(F18195) contains.

Hex(F18195)	3
<i>Conversions</i>	4
<i>Details</i>	6
<i>Harmonies</i>	11
<i>Previews</i>	23
<i>Color Blindness Simulation</i>	26
<i>CSS Examples</i>	29

Color

Hex(F18195)

Conversions

Conversions Part 1

Format	Color
Hex	F18195
RGB	241, 129, 149
RGB Percent	95%, 51%, 58%
CMY	0.0549, 0.4941, 0.4157
CMYK	0.00, 0.46, 0.38, 0.05
HSL	349°, 80%, 73%
HSV	349°, 46%, 95%
XYZ	49.5507, 36.5712, 32.8811
YIQ	164.7680, 60.3320, 29.9640

Conversions

Conversions Part 2

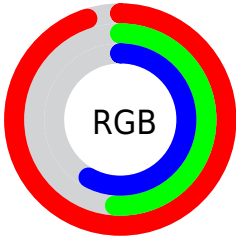
Format	Color
R _Y B	241, 129, 149
Decimal	15827349
CIE Lab	66.95, 44.85, 8.84
CIE LCh	67, 45.717, 11.153
Yxy	36.5712, 0.4164, 0.3073
Android (android.graphics.Color)	4294017429 (0xFFFF18195)
YUV	164.7680, -7.7736, 66.8555
Hunter-Lab	60.4741, 40.4278, 10.0946

Details

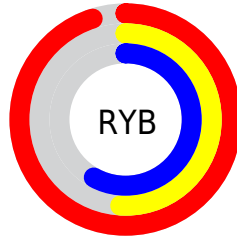
The Hex color **F18195** is a light color, and the websafe version is hex **FF9999**. A complement of this color would be **81F1DD**, and the grayscale version is **A5A5A5**.

A 20% lighter version of the original color is **FFB8CB**, and **B64C62** is the 20% darker color. If you saturate the color by 10%, you get **F16981**, and if you desaturate by 10%, it is **F199A9**.

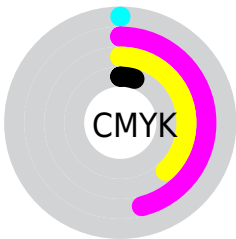
Distribution



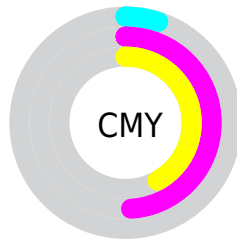
- Red (95%)
- Green (51%)
- Blue (58%)



- Red (95%)
- Yellow (51%)
- Blue (58%)



- Cyan (0%)
- Magenta (46%)
- Yellow (38%)
- Black (5%)



- Cyan (5%)
- Magenta (49%)
- Yellow (42%)

Brightness & Saturation Gradients

These gradients show how the Hex color F18195 changes by changing the brightness by 10 percent. The first figure shows a shift by +10% for each color and the second figure -10%.

Similar to the brightness gradients but the following saturation gradients show a change of the Hex color F18195 by changing the saturation by 10% instead.

 F18195

 F18195

FFFFFF

 D3667B

 FF8CB

 B64C62

 FFD4E7

 99324B

 FFF1FF

 7C1434

 60001F

 450007

 2C0001

 000000

 F18195

 F18195

 F16981

 F199A9

 F1516D

 F1B1BD

 F1395A

 F1C9D0

 F12146

 F1E1E4

 F10832

 F1FAF8

 F1002B

 F1FFFF

Harmonies

Analogous

The Analogous color harmony consists of three colors that are next to each other on the color wheel.



E285BE



F18195



EA896F

Triad

The Triadic color harmony groups three colors that are evenly spaced from another and form a triangle on the color wheel.



F18195



80B063



00AEF0

Complementary

The Complementary color scheme is a pair of colors which are on the opposite of each other on the color wheel.



F18195



81F1DD

Split Complementary

Split-complementary colors differ from the complementary color scheme. The scheme consists of three colors, the original color and two neighbors of the complement color.



00B6D8



F18195



45B687

Square

The Square scheme is like the rectangle color scheme, but the four colors are evenly spaced on the color wheel.



F18195



ADA650



00B8B1



7CA2F3

Rectangle

The Rectangle color scheme consists of four colors that form a rectangle on the color wheel.



F18195



DB925B



00B8B1



00B2EA

Sweetspot

The Sweet Spot groups the original color and five complimentary colors.



F18195



FFDBE2



DC81F1



806A6E



000000



808080

Same Dimension

The Same Dimension uses a secret algorithm to generate beautiful new colors.



F18195



FF708A



F1A481



786C6E



B80021



38000A

Inverse Universe

The Inverse Universe completely reimagines the original color for something new.



F18195



FF708A



81CEF1



786C6E



B80021



38000A

Previews

White Background



This preview shows how the Hex color F18195 looks on a white background.

Color Contrast Check

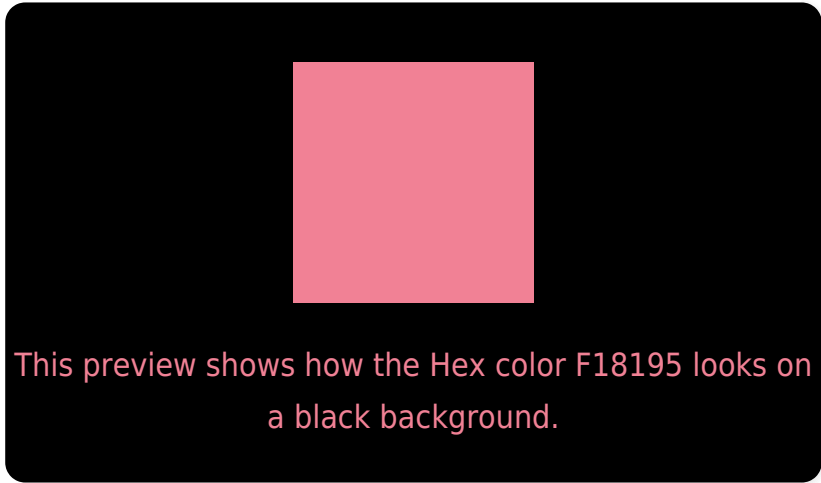
Large Text (above 18pt) WCAG AA × Fail

Any Text WCAG AA × Fail

Large Text (above 18pt) WCAG AAA × Fail

Any Text WCAG AAA × Fail

Black Background



Color Contrast Check

Large Text (above 18pt) WCAG AA ✓ Pass

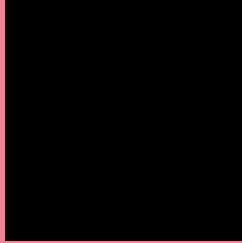
Any Text WCAG AA ✓ Pass

Large Text (above 18pt) WCAG AAA ✓ Pass

Any Text WCAG AAA ✓ Pass

If you want to check with other color combinations, try the [Color Contrast Checker](#).

Hex F18195 Background



This preview shows how black text looks on a background with the Hex color F18195.

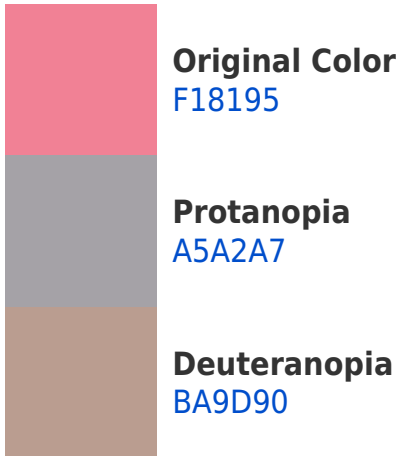


This preview shows how white text looks on a background with the Hex color F18195.

Color Blindness Simulation

Color vision deficiency is a very complex topic, and I could not describe the different causes any better than Wikipedia does, so if you want to learn more, you should check out their [article about color blindness](#).

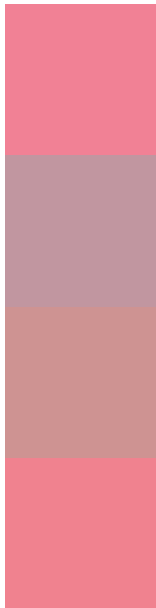
Dichromacy





Tritanopia
F0838C

Trichromacy



Original Color
F18195

Protanomaly
C196A0

Deuteranomaly
CE9392

Tritanomaly
F0828F

Monochromacy



Original Color
F18195

Achromatopsia
A5A5A5

Achromatomaly
C1989F

CSS Examples

Text

The CSS property to change the color of the text to Hex F18195 is called "color". The color property can be set on classes, ids or directly on the HTML element.

This example shows how text in the color #F18195 looks like.

```
.text, #text, p{  
    color:#F18195  
}
```

If you want to add a text shadow in that color use the text-shadow property, you can generate a text shadow directly with our [CSS Text Shadow Generator](#).

Here you see how black text with a 4 pixel #F18195 colored shadow looks like.

```
.shadow{ text-shadow: 4px 4px 2px #F18195
}
```

Border

The CSS property to change the border of an element to Hex F18195 is called "border". The border property can be set on classes, ids or directly on the HTML element.

This example shows the color as border, it can be applied via the CSS property "border" or "border-color".

```
.border, #border, table{ border:4px solid
#F18195 }
```

If only the border color should be changed use the property `border-color`.

```
.border{ border-color:#F18195 }
```

If you want to add a box shadow in that color use:

Here you see how a box with a 4 pixel #F18195 colored shadow looks like.

```
.boxshadow{ -moz-box-shadow:4px 4px 4px  
4px #F18195; -webkit-box-shadow:4px 4px  
4px 4px #F18195; box-shadow:4px 4px 4px  
4px #F18195 }
```

Background

The CSS property to change the background color of an element to Hex F18195 is called "background". The background property can be set on classes, ids or directly on the HTML element.

```
.background, #background, body{  
background:#F18195 }
```

If only the background color should be changed can be used:

```
.background{ background-color:#F18195 }
```

This example shows the color as background, it is applied via the CSS property "background".

To optimize and compress your CSS code, you can use our [online CSS compressor and optimizer](#) based on csstidy. If you want to create a linear or radial gradient as background or border, check our [CSS Gradient Generator](#).

Hey! You found this booklet interesting? Support Converting Colors with the new Membership Option!

The pro membership hides all ads, plus gives you double the colors in the color bucket, and more awesome pro features!

[Learn more, Memberships starting at \\$2.50/m!](#)

**Follow me
on Twitter!**

@ConvertingColor