

# Converting Colors

Hex(F18C94)

Have a look what the booklet for  
Hex(F18C94) contains.

<b>Hex(F18C94)</b> .....	3
<b><i>Conversions</i></b> .....	4
<b><i>Details</i></b> .....	6
<b><i>Harmonies</i></b> .....	11
<b><i>Previews</i></b> .....	23
<b><i>Color Blindness Simulation</i></b> .....	26
<b><i>CSS Examples</i></b> .....	29

# **Color**

**Hex(F18C94)**

# Conversions

## Conversions Part 1

Format	Color
Hex	F18C94
RGB	241, 140, 148
RGB Percent	95%, 55%, 58%
CMY	0.0549, 0.4510, 0.4196
CMYK	0.00, 0.42, 0.39, 0.05
HSL	355°, 78%, 75%
HSV	355°, 42%, 95%
XYZ	50.9990, 39.5951, 32.9716
YIQ	171.1110, 57.6280, 23.9000

# Conversions

## Conversions Part 2

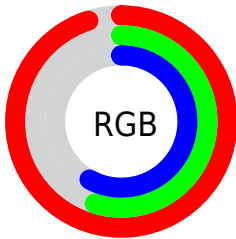
<b>Format</b>	<b>Color</b>
R <sub>Y</sub> B	241, 140, 148
Decimal	15830164
CIE Lab	69.18, 39.14, 12.56
CIE LCh	69, 41.107, 17.788
Yxy	39.5951, 0.4127, 0.3204
Android (android.graphics.Color)	4294020244 (0xFFFF18C94)
YUV	171.1110, -11.3937, 61.2927
Hunter-Lab	62.9246, 34.5523, 12.9801

# Details

The Hex color **F18C94** is a light color, and the websafe version is hex **FF9999**. A complement of this color would be **8CF1E9**, and the grayscale version is **ABABAB**.

A 20% lighter version of the original color is **FFC3CA**, and **B65861** is the 20% darker color. If you saturate the color by 10%, you get **F1747E**, and if you desaturate by 10%, it is **F1A4AA**.

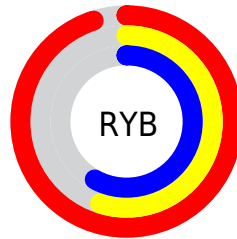
# Distribution



Red (95%)

Green (55%)

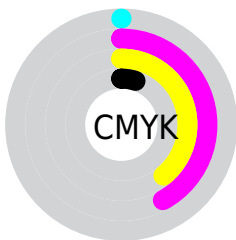
Blue (58%)



Red (95%)

Yellow (55%)

Blue (58%)

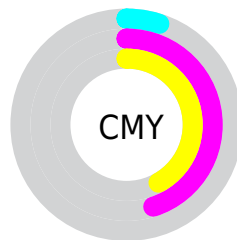


Cyan (0%)

Magenta (42%)

Yellow (39%)

Black (5%)



Cyan (5%)

Magenta (45%)

Yellow (42%)

# Brightness & Saturation Gradients

These gradients show how the Hex color F18C94 changes by changing the brightness by 10 percent. The first figure shows a shift by +10% for each color and the second figure -10%.

Similar to the brightness gradients but the following saturation gradients show a change of the Hex color F18C94 by changing the saturation by 10% instead.



 F18C94

 F18C94

FFFFFF

 D3727A

 FFC3CA

 B65861

 FFDFE6

 993E4A

 FFFCFF

 7D2533

 61061E

 470006

 2F0002

 000000

 F18C94

 F18C94

 F1747E

 F1A4AA

 F15C68

 F1BCC0

 F14451

 F1D4D7

 F12C3B

 F1ECED

 F11425

 F1FFFF

 F10013

# Harmonies

## Analogous

The Analogous color harmony consists of three colors that are next to each other on the color wheel.



E78DBA



F18C94



E79573

# Triad

The Triadic color harmony groups three colors that are evenly spaced from another and form a triangle on the color wheel.



F18C94



80B775



51B1F1

# Complementary

The Complementary color scheme is a pair of colors which are on the opposite of each other on the color wheel.



F18C94



8CF1E9

# Split Complementary

Split-complementary colors differ from the complementary color scheme. The scheme consists of three colors, the original color and two neighbors of the complement color.



00B9DF



F18C94



4DBC98

# Square

The Square scheme is like the rectangle color scheme, but the four colors are evenly spaced on the color wheel.



F18C94



ABAE60



00BCBE



96A5F0

# Rectangle

The Rectangle color scheme consists of four colors that form a rectangle on the color wheel.



F18C94



D89D64



00BCBE



33B4ED



# Sweetspot

The Sweet Spot groups the original color and five complimentary colors.



F18C94



FFDEE0



E98CF1



806B6D



000000



808080



# Same Dimension

The Same Dimension uses a secret algorithm to generate beautiful new colors.



F18C94



FF808A



F1B68C



786C6D



B8000F



380004



# Inverse Universe

The Inverse Universe completely reimagines the original color for something new.



F18C94



FF808A



8CC7F1



786C6D



B8000F

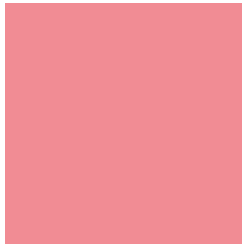


380004



# Previews

## White Background



This preview shows how the Hex color F18C94 looks on a white background.

## Color Contrast Check

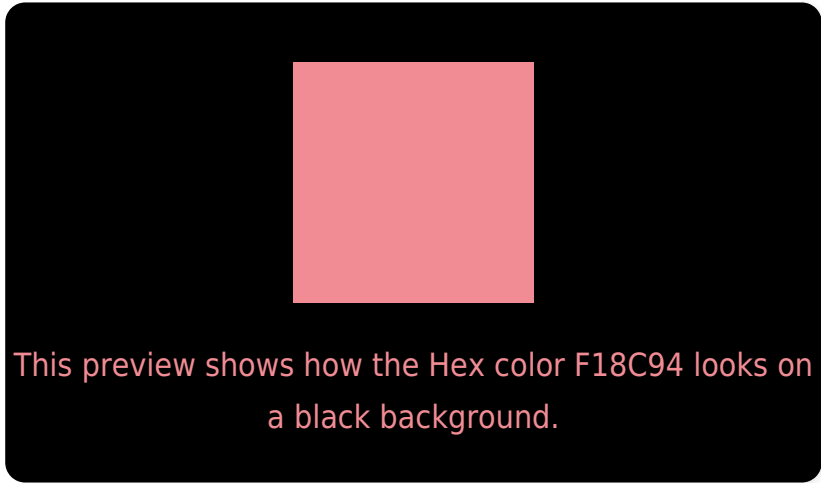
Large Text (above 18pt) WCAG AA × Fail

Any Text WCAG AA × Fail

Large Text (above 18pt) WCAG AAA × Fail

Any Text WCAG AAA × Fail

# Black Background



## Color Contrast Check

Large Text (above 18pt) WCAG AA ✓ Pass

Any Text WCAG AA ✓ Pass

Large Text (above 18pt) WCAG AAA ✓ Pass

Any Text WCAG AAA ✓ Pass

If you want to check with other color combinations, try the [Color Contrast Checker](#).



## Hex F18C94 Background



This preview shows how black text looks on a background with the Hex color F18C94.

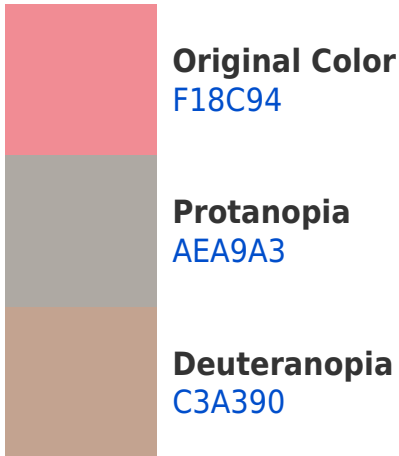


This preview shows how white text looks on a background with the Hex color F18C94.

# Color Blindness Simulation

Color vision deficiency is a very complex topic, and I could not describe the different causes any better than Wikipedia does, so if you want to learn more, you should check out their [article about color blindness](#).

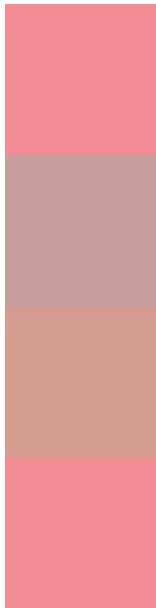
## Dichromacy





**Tritanopia**  
F18C96

# Trichromacy



**Original Color**  
F18C94

**Protanomaly**  
C69E9E

**Deuteranomaly**  
D49B91

**Tritanomaly**  
F18C95

# Monochromacy



**Original Color**  
F18C94

**Achromatopsia**  
ABABAB

**Achromatomaly**  
C4A0A3

# CSS Examples

## Text

The CSS property to change the color of the text to Hex F18C94 is called "color". The color property can be set on classes, ids or directly on the HTML element.

This example shows how text in the color #F18C94 looks like.

```
.text, #text, p{  
    color:#F18C94  
}
```

If you want to add a text shadow in that color use the text-shadow property, you can generate a text shadow directly with our [CSS Text Shadow Generator](#).

Here you see how black text with a 4 pixel #F18C94 colored shadow looks like.

```
.shadow{ text-shadow: 4px 4px 2px #F18C94
}
```

## Border

The CSS property to change the border of an element to Hex F18C94 is called "border". The border property can be set on classes, ids or directly on the HTML element.

This example shows the color as border, it can be applied via the CSS property "border" or "border-color".

```
.border, #border, table{ border:4px solid
#F18C94 }
```

If only the border color should be changed use the property `border-color`.

```
.border{ border-color:#F18C94 }
```

If you want to add a box shadow in that color use:

Here you see how a box with a 4 pixel #F18C94 colored shadow looks like.

```
.boxshadow{ -moz-box-shadow:4px 4px 4px  
4px #F18C94; -webkit-box-shadow:4px 4px  
4px 4px #F18C94; box-shadow:4px 4px 4px  
4px #F18C94 }
```

# Background

The CSS property to change the background color of an element to Hex F18C94 is called "background". The background property can be set on classes, ids or directly on the HTML element.

```
.background, #background, body{  
background:#F18C94 }
```

If only the background color should be changed can be used:

```
.background{ background-color:#F18C94 }
```

This example shows the color as background, it is applied via the CSS property "background".

To optimize and compress your CSS code, you can use our [online CSS compressor and optimizer](#) based on csstidy. If you want to create a linear or radial gradient as background or border, check our [CSS Gradient Generator](#).



Hey! You found this booklet interesting? Support Converting Colors with the new Membership Option!

The pro membership hides all ads, plus gives you double the colors in the color bucket, and more awesome pro features!

**[Learn more, Memberships starting at \\$2.50/m!](#)**

**Follow me  
on Twitter!**

@ConvertingColor