

Converting Colors

Hex(F19A81)

Have a look what the booklet for
Hex(F19A81) contains.

Hex(F19A81)	3
<i>Conversions</i>	4
<i>Details</i>	6
<i>Harmonies</i>	11
<i>Previews</i>	23
<i>Color Blindness Simulation</i>	26
<i>CSS Examples</i>	29

Color

Hex(F19A81)

Conversions

Conversions Part 1

Format	Color
Hex	F19A81
RGB	241, 154, 129
RGB Percent	95%, 60%, 51%
CMY	0.0549, 0.3961, 0.4941
CMYK	0.00, 0.36, 0.46, 0.05
HSL	13°, 80%, 73%
HSV	13°, 46%, 95%
XYZ	51.7937, 43.3970, 26.4155
YIQ	177.1630, 59.8770, 10.6690

Conversions

Conversions Part 2

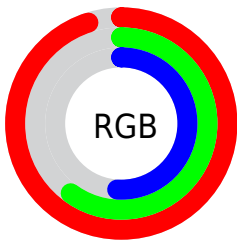
Format	Color
R _Y B	241, 161, 129
Decimal	15833729
CIE Lab	71.82, 29.85, 26.68
CIE LCh	72, 40.035, 41.796
Yxy	43.3970, 0.4259, 0.3569
Android (android.graphics.Color)	4294023809 (0xFFFF19A81)
YUV	177.1630, -23.7444, 55.9850
Hunter-Lab	65.8764, 25.0576, 22.3390

Details

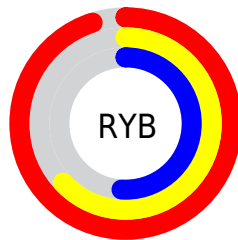
The Hex color **F19A81** is a light color, and the websafe version is hex **FF9999**. A complement of this color would be **81D8F1**, and the grayscale version is **B1B1B1**.

A 20% lighter version of the original color is **FFD1B6**, and **B6664F** is the 20% darker color. If you saturate the color by 10%, you get **F18769**, and if you desaturate by 10%, it is **F1AD99**.

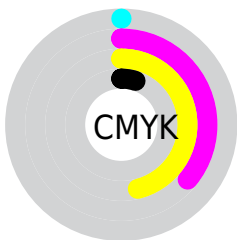
Distribution



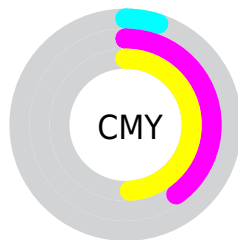
- Red (95%)
- Green (60%)
- Blue (51%)



- Red (95%)
- Yellow (63%)
- Blue (51%)



- Cyan (0%)
- Magenta (36%)
- Yellow (46%)
- Black (5%)



- Cyan (5%)
- Magenta (40%)
- Yellow (49%)

Brightness & Saturation Gradients

These gradients show how the Hex color F19A81 changes by changing the brightness by 10 percent. The first figure shows a shift by +10% for each color and the second figure -10%.

Similar to the brightness gradients but the following saturation gradients show a change of the Hex color F19A81 by changing the saturation by 10% instead.

 F19A81

 F19A81

FFFFFF

 D38068

 FFD1B6

 B6664F

 FFEED2

 994D38

 FFFFFE

 7D3522

 611D0D

 460400

 2E0000

 000000

 F19A81

 F19A81

 F18769

 F1AD99

 F17551

 F1BFB1

 F16239

 F1D2C9

 F14F21

 F1E5E1

 F13C08

 F1F8FA

 F13600

 F1FFFF

Harmonies

Analogous

The Analogous color harmony consists of three colors that are next to each other on the color wheel.



F793A3



F19A81



DBA66B

Triad

The Triadic color harmony groups three colors that are evenly spaced from another and form a triangle on the color wheel.



F19A81



63C298



92AFF7

Complementary

The Complementary color scheme is a pair of colors which are on the opposite of each other on the color wheel.



F19A81



81D8F1

Split Complementary

Split-complementary colors differ from the complementary color scheme. The scheme consists of three colors, the original color and two neighbors of the complement color.



50BAF5



F19A81



27C4BE

Square

The Square scheme is like the rectangle color scheme, but the four colors are evenly spaced on the color wheel.



F19A81



91BC78



00C1E0



C7A1E7

Rectangle

The Rectangle color scheme consists of four colors that form a rectangle on the color wheel.



F19A81



C6AF66



00C1E0



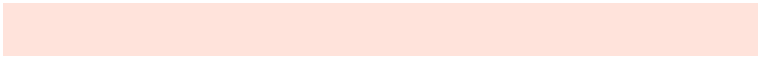
7DB3F9

Sweetspot

The Sweet Spot groups the original color and five complimentary colors.



F19A81



FFE3DB



F181D9



806F6A



000000



808080

Same Dimension

The Same Dimension uses a secret algorithm to generate beautiful new colors.



F19A81



FF9070



F1D181



786F6C



B82900



380D00

Inverse Universe

The Inverse Universe completely reimagines the original color for something new.



81D8F1



70DFFF



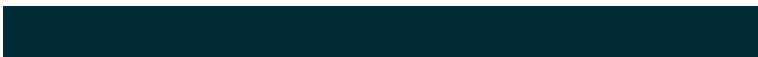
81A1F1



6C7578



008FB8



002C38

Previews

White Background



This preview shows how the Hex color F19A81 looks on a white background.

Color Contrast Check

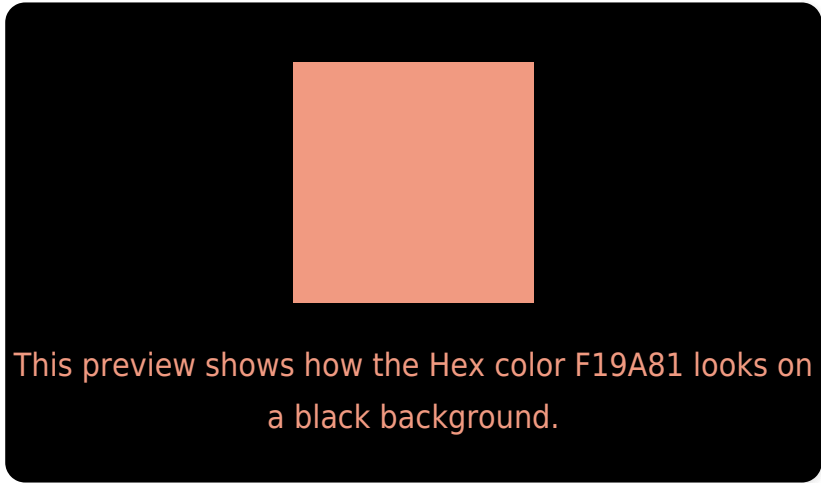
Large Text (above 18pt) WCAG AA × Fail

Any Text WCAG AA × Fail

Large Text (above 18pt) WCAG AAA × Fail

Any Text WCAG AAA × Fail

Black Background



Color Contrast Check

Large Text (above 18pt) WCAG AA ✓ Pass

Any Text WCAG AA ✓ Pass

Large Text (above 18pt) WCAG AAA ✓ Pass

Any Text WCAG AAA ✓ Pass

If you want to check with other color combinations, try the [Color Contrast Checker](#).

Hex F19A81 Background



This preview shows how black text looks on a background with the Hex color F19A81.

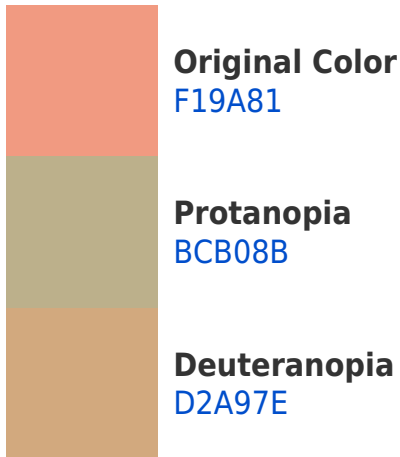


This preview shows how white text looks on a background with the Hex color F19A81.

Color Blindness Simulation

Color vision deficiency is a very complex topic, and I could not describe the different causes any better than Wikipedia does, so if you want to learn more, you should check out their [article about color blindness](#).

Dichromacy



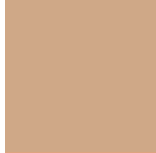


Tritanopia
F496A1

Trichromacy



Original Color
F19A81



Protanomaly
CFA887



Deuteranomaly
DDA47F

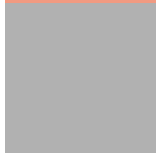


Tritanomaly
F39795

Monochromacy



Original Color
F19A81



Achromatopsia
B1B1B1



Achromatomaly
C8A9A0

CSS Examples

Text

The CSS property to change the color of the text to Hex F19A81 is called "color". The color property can be set on classes, ids or directly on the HTML element.

This example shows how text in the color #F19A81 looks like.

```
.text, #text, p{  
    color:#F19A81  
}
```

If you want to add a text shadow in that color use the text-shadow property, you can generate a text shadow directly with our [CSS Text Shadow Generator](#).

Here you see how black text with a 4 pixel #F19A81 colored shadow looks like.

```
.shadow{ text-shadow: 4px 4px 2px #F19A81
}
```

Border

The CSS property to change the border of an element to Hex F19A81 is called "border". The border property can be set on classes, ids or directly on the HTML element.

This example shows the color as border, it can be applied via the CSS property "border" or "border-color".

```
.border, #border, table{ border:4px solid
#F19A81 }
```

If only the border color should be changed use the property `border-color`.

```
.border{ border-color:#F19A81 }
```

If you want to add a box shadow in that color use:

Here you see how a box with a 4 pixel #F19A81 colored shadow looks like.

```
.boxshadow{ -moz-box-shadow:4px 4px 4px  
4px #F19A81; -webkit-box-shadow:4px 4px  
4px 4px #F19A81; box-shadow:4px 4px 4px  
4px #F19A81 }
```

Background

The CSS property to change the background color of an element to Hex F19A81 is called "background". The background property can be set on classes, ids or directly on the HTML element.

```
.background, #background, body{  
background:#F19A81 }
```

If only the background color should be changed can be used:

```
.background{ background-color:#F19A81 }
```

This example shows the color as background, it is applied via the CSS property "background".

To optimize and compress your CSS code, you can use our [online CSS compressor and optimizer](#) based on csstidy. If you want to create a linear or radial gradient as background or border, check our [CSS Gradient Generator](#).

Hey! You found this booklet interesting? Support Converting Colors with the new Membership Option!

The pro membership hides all ads, plus gives you double the colors in the color bucket, and more awesome pro features!

[Learn more, Memberships starting at \\$2.50/m!](#)

**Follow me
on Twitter!**

@ConvertingColor