

Converting Colors

Hex(F1D6D6)

Have a look what the booklet for
Hex(F1D6D6) contains.

Hex(F1D6D6)	3
<i>Conversions</i>	4
<i>Details</i>	6
<i>Harmonies</i>	11
<i>Previews</i>	23
<i>Color Blindness Simulation</i>	26
<i>CSS Examples</i>	29

Color

Hex(F1D6D6)

Conversions

Conversions Part 1

Format	Color
Hex	F1D6D6
RGB	241, 214, 214
RGB Percent	95%, 84%, 84%
CMY	0.0549, 0.1608, 0.1608
CMYK	0.00, 0.11, 0.11, 0.05
HSL	0°, 49%, 89%
HSV	0°, 11%, 95%
XYZ	72.4598, 71.6489, 73.6289
YIQ	222.0730, 16.0920, 5.7240

Conversions

Conversions Part 2

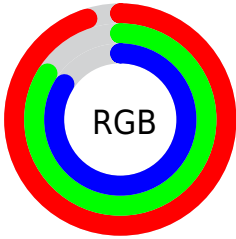
Format	Color
R _Y B	241, 214, 214
Decimal	15849174
CIE Lab	87.80, 9.35, 3.42
CIE LCh	88, 9.956, 20.077
Yxy	71.6489, 0.3328, 0.3291
Android (android.graphics.Color)	4294039254 (0xFFFF1D6D6)
YUV	222.0730, -3.9800, 16.5990
Hunter-Lab	84.6457, 4.6725, 7.6787

Details

The Hex color **F1D6D6** is a light color, and the websafe version is hex **FFCCCC**. A complement of this color would be **D6F1F1**, and the grayscale version is **DEDEDE**.

A 20% lighter version of the original color is **FFFFFF**, and **B99F9F** is the 20% darker color. If you saturate the color by 10%, you get **F1BEBE**, and if you desaturate by 10%, it is **F1EEEE**.

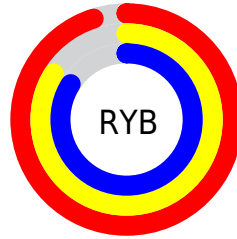
Distribution



Red (95%)

Green (84%)

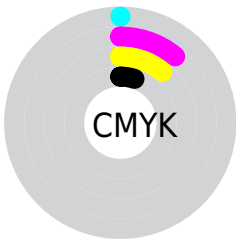
Blue (84%)



Red (95%)

Yellow (84%)

Blue (84%)

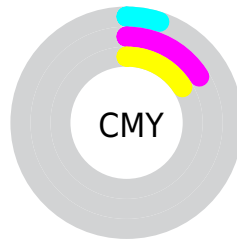


Cyan (0%)

Magenta (11%)

Yellow (11%)

Black (5%)



Cyan (5%)

Magenta (16%)

Yellow (16%)

Brightness & Saturation Gradients

These gradients show how the Hex color F1D6D6 changes by changing the brightness by 10 percent. The first figure shows a shift by +10% for each color and the second figure -10%.

Similar to the brightness gradients but the following saturation gradients show a change of the Hex color F1D6D6 by changing the saturation by 10% instead.

 F1D6D6

 F1D6D6

FFFFFF

 D5BABA

 B99F9F

 9E8585

 836C6C

 6A5454

 523C3D

 3A2727

 241212

 000000

 F1D6D6

 F1D6D6

 F1BEBE

 F1EEEE

 F1A6A6

 F1FFFF

 F18E8E

 F17676

 F15E5E

 F14545

 F12D2D

 F11515

 F10000

Harmonies

Analogous

The Analogous color harmony consists of three colors that are next to each other on the color wheel.



EED6E0



F1D6D6



EFD8CE

Triad

The Triadic color harmony groups three colors that are evenly spaced from another and form a triangle on the color wheel.



F1D6D6



D2E0D0



CFDEEE

Complementary

The Complementary color scheme is a pair of colors which are on the opposite of each other on the color wheel.



F1D6D6



D6F1F1

Split Complementary

Split-complementary colors differ from the complementary color scheme. The scheme consists of three colors, the original color and two neighbors of the complement color.



C7E0EA



F1D6D6



C9E2D9

Square

The Square scheme is like the rectangle color scheme, but the four colors are evenly spaced on the color wheel.



F1D6D6



DDDDCA



C5E2E2



DADBEE

Rectangle

The Rectangle color scheme consists of four colors that form a rectangle on the color wheel.



F1D6D6



EAD9CB



C5E2E2



CCDFEE

Sweetspot

The Sweet Spot groups the original color and five complimentary colors.



F1D6D6



FFF7F7



F1D6F1



807A7A



000000



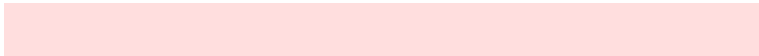
808080

Same Dimension

The Same Dimension uses a secret algorithm to generate beautiful new colors.



F1D6D6



FFDEDE



F1E3D6



786C6C



B80000



380000

Inverse Universe

The Inverse Universe completely reimagines the original color for something new.



D6F1F1



DEFFFF



D6E3F1



6C7878



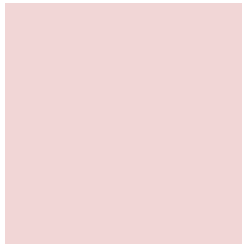
00B8B8



003838

Previews

White Background



This preview shows how the Hex color F1D6D6 looks on a white background.

Color Contrast Check

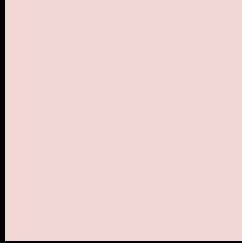
Large Text (above 18pt) WCAG AA × Fail

Any Text WCAG AA × Fail

Large Text (above 18pt) WCAG AAA × Fail

Any Text WCAG AAA × Fail

Black Background



This preview shows how the Hex color F1D6D6 looks on a black background.

Color Contrast Check

Large Text (above 18pt) WCAG AA ✓ Pass

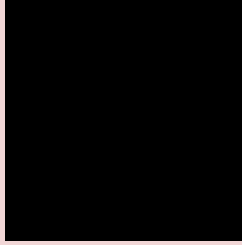
Any Text WCAG AA ✓ Pass

Large Text (above 18pt) WCAG AAA ✓ Pass

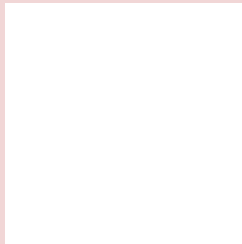
Any Text WCAG AAA ✓ Pass

If you want to check with other color combinations, try the [Color Contrast Checker](#).

Hex F1D6D6 Background



This preview shows how black text looks on a background with the Hex color F1D6D6.

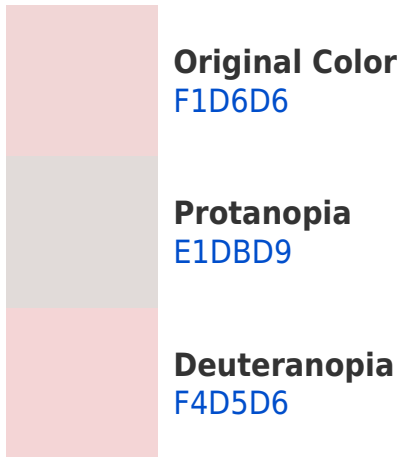


This preview shows how white text looks on a background with the Hex color F1D6D6.

Color Blindness Simulation

Color vision deficiency is a very complex topic, and I could not describe the different causes any better than Wikipedia does, so if you want to learn more, you should check out their [article about color blindness](#).

Dichromacy





Tritanopia
F3D4E4

Trichromacy



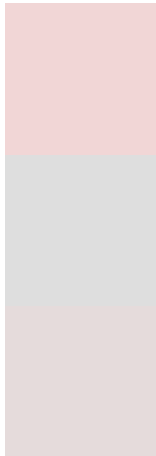
Original Color
F1D6D6

Protanomaly
E7D9D8

Deuteranomaly
F3D5D6

Tritanomaly
F2D5DF

Monochromacy



Original Color
F1D6D6

Achromatopsia
DEDEDE

Achromatomaly
E5DBDB

CSS Examples

Text

The CSS property to change the color of the text to Hex F1D6D6 is called "color". The color property can be set on classes, ids or directly on the HTML element.

This example shows how text in the color #F1D6D6 looks like.

```
.text, #text, p{  
    color:#F1D6D6  
}
```

If you want to add a text shadow in that color use the text-shadow property, you can generate a text shadow directly with our [CSS Text Shadow Generator](#).

Here you see how black text with a 4 pixel #F1D6D6 colored shadow looks like.

```
.shadow{ text-shadow: 4px 4px 2px #F1D6D6
}
```

Border

The CSS property to change the border of an element to Hex F1D6D6 is called "border". The border property can be set on classes, ids or directly on the HTML element.

This example shows the color as border, it can be applied via the CSS property "border" or "border-color".

```
.border, #border, table{ border:4px solid
#F1D6D6 }
```

If only the border color should be changed use the property `border-color`.

```
.border{ border-color:#F1D6D6 }
```

If you want to add a box shadow in that color use:

Here you see how a box with a 4 pixel #F1D6D6 colored shadow looks like.

```
.boxshadow{ -moz-box-shadow:4px 4px 4px  
4px #F1D6D6; -webkit-box-shadow:4px 4px  
4px 4px #F1D6D6; box-shadow:4px 4px 4px  
4px #F1D6D6 }
```

Background

The CSS property to change the background color of an element to Hex F1D6D6 is called "background". The background property can be set on classes, ids or directly on the HTML element.

```
.background, #background, body{  
background:#F1D6D6 }
```

If only the background color should be changed can be used:

```
.background{ background-color:#F1D6D6 }
```

This example shows the color as background, it is applied via the CSS property "background".

To optimize and compress your CSS code, you can use our [online CSS compressor and optimizer](#) based on csstidy. If you want to create a linear or radial gradient as background or border, check our [CSS Gradient Generator](#).

Hey! You found this booklet interesting? Support Converting Colors with the new Membership Option!

The pro membership hides all ads, plus gives you double the colors in the color bucket, and more awesome pro features!

[Learn more, Memberships starting at \\$2.50/m!](#)

**Follow me
on Twitter!**

@ConvertingColor