

Converting Colors

Hex(F22D6C)

Have a look what the booklet for
Hex(F22D6C) contains.

Hex(F22D6C)	3
<i>Conversions</i>	4
<i>Details</i>	6
<i>Harmonies</i>	11
<i>Previews</i>	23
<i>Color Blindness Simulation</i>	26
<i>CSS Examples</i>	29

Color

Hex(F22D6C)

Conversions

Conversions Part 1

Format	Color
Hex	F22D6C
RGB	242, 45, 108
RGB Percent	95%, 18%, 42%
CMY	0.0510, 0.8235, 0.5765
CMYK	0.00, 0.81, 0.55, 0.05
HSL	341°, 88%, 56%
HSV	341°, 81%, 95%
XYZ	40.2631, 21.8367, 16.2802
YIQ	111.0850, 97.1890, 61.3570

Conversions

Conversions Part 2

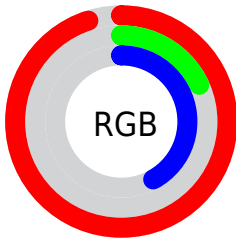
Format	Color
R_{YB}	242, 45, 108
Decimal	15871340
CIE _{Lab}	53.85, 74.42, 14.28
CIE _{LCh}	54, 75.781, 10.865
Yxy	21.8367, 0.5137, 0.2786
Android (android.graphics.Color)	4294061420 (0xFFFF22D6C)
YUV	111.0850, -1.5209, 114.8125
Hunter-Lab	46.7298, 72.0213, 12.0548

Details

The Hex color **F22D6C** is a dark color, and the websafe version is hex **FF3366**. The color can be described as dark washed rose. A complement of this color would be **2DF2B3**, and the grayscale version is **6F6F6F**.

A 20% lighter version of the original color is **FF709F**, and **B3003D** is the 20% darker color. If you saturate the color by 10%, you get **F2155C**, and if you desaturate by 10%, it is **F2457C**.

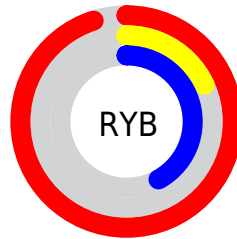
Distribution



Red (95%)

Green (18%)

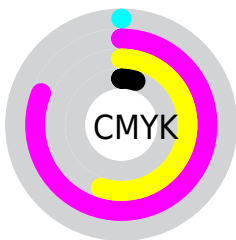
Blue (42%)



Red (95%)

Yellow (18%)

Blue (42%)

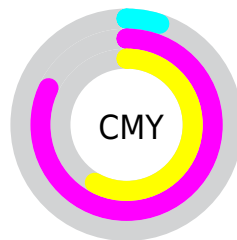


Cyan (0%)

Magenta (81%)

Yellow (55%)

Black (5%)



Cyan (5%)

Magenta (82%)

Yellow (58%)

Brightness & Saturation Gradients

These gradients show how the Hex color F22D6C changes by changing the brightness by 10 percent. The first figure shows a shift by +10% for each color and the second figure -10%.

Similar to the brightness gradients but the following saturation gradients show a change of the Hex color F22D6C by changing the saturation by 10% instead.

 F22D6C

 F22D6C

FFFFFF

 D20054

 FF709F

 B3003D

 FF8EBA

 940028

 FFACD6

 750014

 FFCAF2

 570003

 FFE8FF

 380002

 0C0000

 000000

 F22D6C

 F22D6C

 F2155C

 F2457C

 F2004D

 F25D8D

 F2769D

 F28EAE

 F2A6BE

 F2BECF

 F2D6DF

 F2EFF0

 F2FFFF

Harmonies

Analogous

The Analogous color harmony consists of three colors that are next to each other on the color wheel.



DE3CAD



F22D6C



E44C2D

Triad

The Triadic color harmony groups three colors that are evenly spaced from another and form a triangle on the color wheel.



F22D6C



389300



0094FD

Complementary

The Complementary color scheme is a pair of colors which are on the opposite of each other on the color wheel.



F22D6C



2DF2B3

Split Complementary

Split-complementary colors differ from the complementary color scheme. The scheme consists of three colors, the original color and two neighbors of the complement color.



009CD5



F22D6C



009B53

Square

The Square scheme is like the rectangle color scheme, but the four colors are evenly spaced on the color wheel.



F22D6C



868500



009D98



0081FF

Rectangle

The Rectangle color scheme consists of four colors that form a rectangle on the color wheel.



F22D6C



CC6300



009D98



0097F3

Sweetspot

The Sweet Spot groups the original color and five complimentary colors.



F22D6C



FFC2D5



B02DF2



805B66



000000



808080

Same Dimension

The Same Dimension uses a secret algorithm to generate beautiful new colors.



F22D6C



FF0555



F24E2D



786C70



B8003B



380012

Inverse Universe

The Inverse Universe completely reimagines the original color for something new.



F22D6C



FF0555



2DD1F2



786C70



B8003B



380012

Previews

White Background



This preview shows how the Hex color F22D6C looks on a white background.

Color Contrast Check

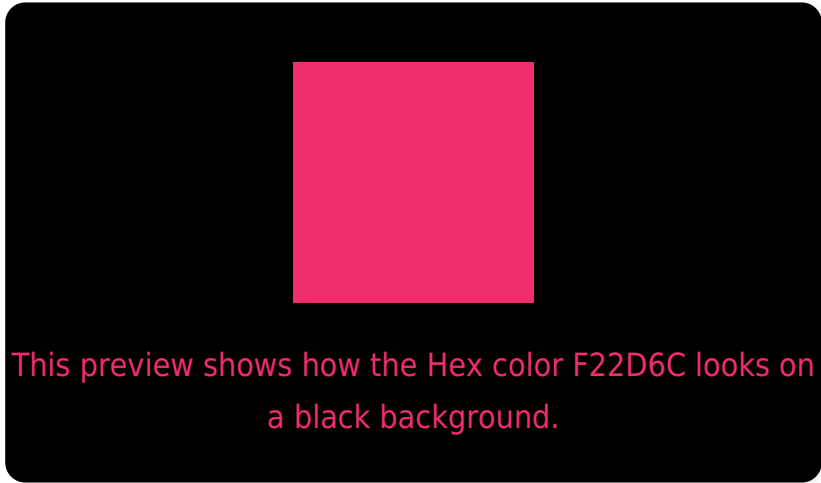
Large Text (above 18pt) WCAG AA ✓ Pass

Any Text WCAG AA × Fail

Large Text (above 18pt) WCAG AAA × Fail

Any Text WCAG AAA × Fail

Black Background



Color Contrast Check

Large Text (above 18pt) WCAG AA ✓ Pass

Any Text WCAG AA ✓ Pass

Large Text (above 18pt) WCAG AAA ✓ Pass

Any Text WCAG AAA × Fail

If you want to check with other color combinations, try the [Color Contrast Checker](#).

Hex F22D6C Background



This preview shows how black text looks on a background with the Hex color F22D6C.

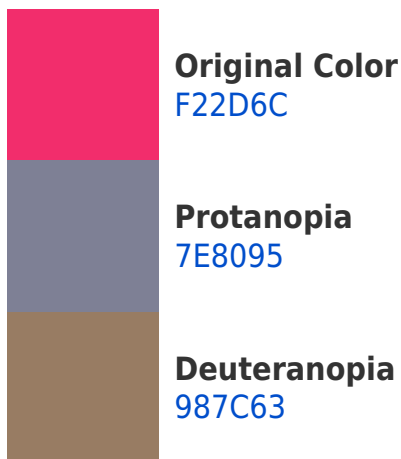


This preview shows how white text looks on a background with the Hex color F22D6C.

Color Blindness Simulation

Color vision deficiency is a very complex topic, and I could not describe the different causes any better than Wikipedia does, so if you want to learn more, you should check out their [article about color blindness](#).

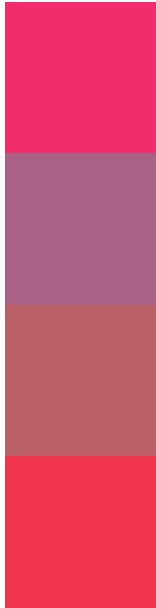
Dichromacy





Tritanopia
F03A3C

Trichromacy



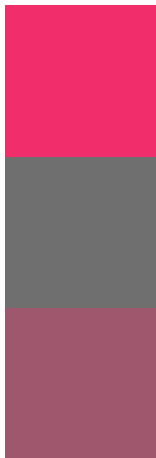
Original Color
F22D6C

Protanomaly
A86286

Deuteranomaly
B95F66

Tritanomaly
F1354D

Monochromacy



Original Color
F22D6C

Achromatopsia
6F6F6F

Achromatomaly
9F576E

CSS Examples

Text

The CSS property to change the color of the text to Hex F22D6C is called "color". The color property can be set on classes, ids or directly on the HTML element.

This example shows how text in the color #F22D6C looks like.

```
.text, #text, p{  
    color:#F22D6C  
}
```

If you want to add a text shadow in that color use the text-shadow property, you can generate a text shadow directly with our [CSS Text Shadow Generator](#).

Here you see how black text with a 4 pixel #F22D6C colored shadow looks like.

```
.shadow{ text-shadow: 4px 4px 2px #F22D6C
}
```

Border

The CSS property to change the border of an element to Hex F22D6C is called "border". The border property can be set on classes, ids or directly on the HTML element.

This example shows the color as border, it can be applied via the CSS property "border" or "border-color".

```
.border, #border, table{ border:4px solid
#F22D6C }
```

If only the border color should be changed use the property `border-color`.

```
.border{ border-color:#F22D6C }
```

If you want to add a box shadow in that color use:

Here you see how a box with a 4 pixel #F22D6C colored shadow looks like.

```
.boxshadow{ -moz-box-shadow:4px 4px 4px  
4px #F22D6C; -webkit-box-shadow:4px 4px  
4px 4px #F22D6C; box-shadow:4px 4px 4px  
4px #F22D6C }
```

Background

The CSS property to change the background color of an element to Hex F22D6C is called "background". The background property can be set on classes, ids or directly on the HTML element.

```
.background, #background, body{  
background:#F22D6C }
```

If only the background color should be changed can be used:

```
.background{ background-color:#F22D6C }
```

This example shows the color as background, it is applied via the CSS property "background".

To optimize and compress your CSS code, you can use our [online CSS compressor and optimizer](#) based on csstidy. If you want to create a linear or radial gradient as background or border, check our [CSS Gradient Generator](#).

Hey! You found this booklet interesting? Support Converting Colors with the new Membership Option!

The pro membership hides all ads, plus gives you double the colors in the color bucket, and more awesome pro features!

[Learn more, Memberships starting at \\$2.50/m!](#)

**Follow me
on Twitter!**

@ConvertingColor