

Converting Colors

Hex(F23F80)

Have a look what the booklet for
Hex(F23F80) contains.

Hex(F23F80)	3
<i>Conversions</i>	4
<i>Details</i>	6
<i>Harmonies</i>	11
<i>Previews</i>	23
<i>Color Blindness Simulation</i>	26
<i>CSS Examples</i>	29

Color

Hex(F23F80)

Conversions

Conversions Part 1

Format	Color
Hex	F23F80
RGB	242, 63, 128
RGB Percent	95%, 25%, 50%
CMY	0.0510, 0.7529, 0.4980
CMYK	0.00, 0.74, 0.47, 0.05
HSL	338°, 87%, 60%
HSV	338°, 74%, 95%
XYZ	42.2917, 23.9908, 22.8237
YIQ	123.9310, 85.8190, 58.1630

Conversions

Conversions Part 2

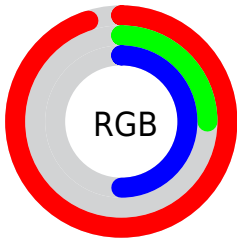
Format	Color
R_{YB}	242, 63, 128
Decimal	15875968
CIE _{Lab}	56.08, 71.03, 5.47
CIE _{LCh}	56, 71.244, 4.401
Yxy	23.9908, 0.4746, 0.2692
Android (android.graphics.Color)	4294066048 (0xFFFF23F80)
YUV	123.9310, 2.0060, 103.5465
Hunter-Lab	48.9804, 68.4088, 6.6585

Details

The Hex color **F23F80** is a dark color, and the websafe version is hex **FF6699**. The color can be described as middle washed rose. A complement of this color would be **3FF2B1**, and the grayscale version is **7C7C7C**.

A 20% lighter version of the original color is **FF7DB5**, and **B4004F** is the 20% darker color. If you saturate the color by 10%, you get **F22771**, and if you desaturate by 10%, it is **F2578F**.

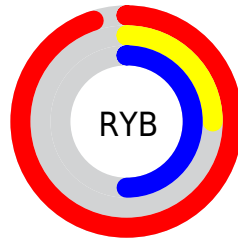
Distribution



Red (95%)

Green (25%)

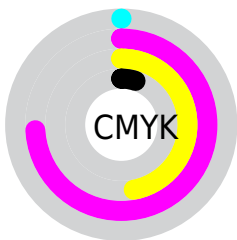
Blue (50%)



Red (95%)

Yellow (25%)

Blue (50%)

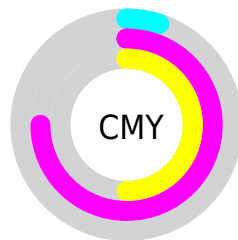


Cyan (0%)

Magenta (74%)

Yellow (47%)

Black (5%)



Cyan (5%)

Magenta (75%)

Yellow (50%)

Brightness & Saturation Gradients

These gradients show how the Hex color F23F80 changes by changing the brightness by 10 percent. The first figure shows a shift by +10% for each color and the second figure -10%.

Similar to the brightness gradients but the following saturation gradients show a change of the Hex color F23F80 by changing the saturation by 10% instead.

 F23F80

 F23F80

FFFFFF

 D31567

 FF7DB5

 B4004F

 FF9AD0

 950039

 FFB7EC

 770024

 FFD5FF

 59000E

 FFF3FF

 3D0003

 170000

 000000

 F23F80

 F23F80

 F22771

 F2578F

 F20F61

 F26F9F

 F20058

 F288AE

 F2A0BE

 F2B8CD

 F2D0DC

 F2E8EC

 F2FFFB

 F2FFFF

Harmonies

Analogous

The Analogous color harmony consists of three colors that are next to each other on the color wheel.



D751BD



F23F80



EB5144

Triad

The Triadic color harmony groups three colors that are evenly spaced from another and form a triangle on the color wheel.



F23F80



599600



009BF6

Complementary

The Complementary color scheme is a pair of colors which are on the opposite of each other on the color wheel.



F23F80



3FF2B1

Split Complementary

Split-complementary colors differ from the complementary color scheme. The scheme consists of three colors, the original color and two neighbors of the complement color.



00A1CB



F23F80



009F4D

Square

The Square scheme is like the rectangle color scheme, but the four colors are evenly spaced on the color wheel.



F23F80



9A8700



00A28E



008BFF

Rectangle

The Rectangle color scheme consists of four colors that form a rectangle on the color wheel.



F23F80



D8651C



00A28E



009EEB

Sweetspot

The Sweet Spot groups the original color and five complimentary colors.



F23F80



FFC7DB



B03FF2



805E6A



000000



808080

Same Dimension

The Same Dimension uses a secret algorithm to generate beautiful new colors.



F23F80



FF1C6E



F2573F



786C70



B80043



380014

Inverse Universe

The Inverse Universe completely reimagines the original color for something new.



F23F80



FF1C6E



3FDAF2



786C70



B80043



380014

Previews

White Background



This preview shows how the Hex color F23F80 looks on a white background.

Color Contrast Check

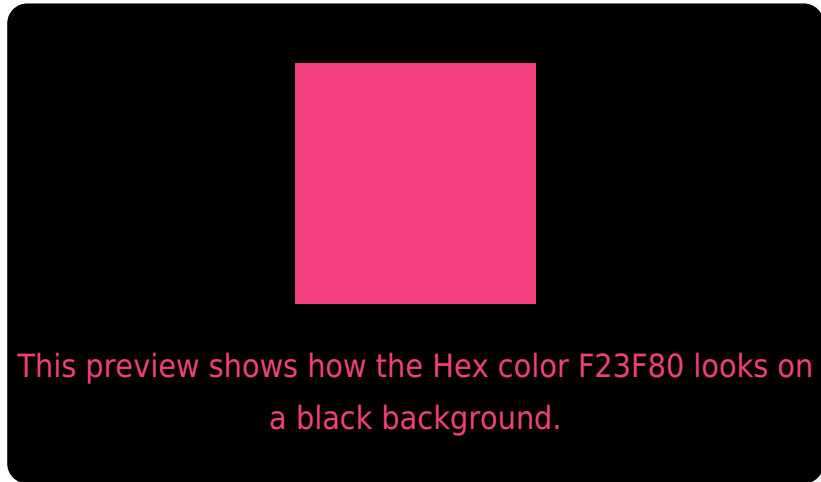
Large Text (above 18pt) WCAG AA ✓ Pass

Any Text WCAG AA × Fail

Large Text (above 18pt) WCAG AAA × Fail

Any Text WCAG AAA × Fail

Black Background



Color Contrast Check

Large Text (above 18pt) WCAG AA ✓ Pass

Any Text WCAG AA ✓ Pass

Large Text (above 18pt) WCAG AAA ✓ Pass

Any Text WCAG AAA × Fail

If you want to check with other color combinations, try the [Color Contrast Checker](#).

Hex F23F80 Background



This preview shows how black text looks on a background with the Hex color F23F80.



This preview shows how white text looks on a background with the Hex color F23F80.

Color Blindness Simulation

Color vision deficiency is a very complex topic, and I could not describe the different causes any better than Wikipedia does, so if you want to learn more, you should check out their [article about color blindness](#).

Dichromacy



Original Color
F23F80

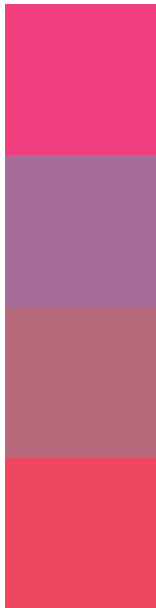
Protanopia
7E85A8

Deuteranopia
998277



Tritanopia
EF4B4F

Trichromacy



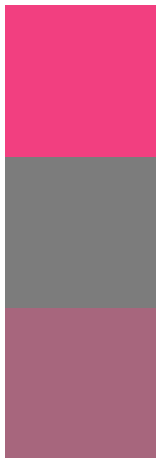
Original Color
F23F80

Protanomaly
A86C99

Deuteranomaly
B96A7A

Tritanomaly
F04761

Monochromacy



Original Color
F23F80

Achromatopsia
7C7C7C

Achromatomaly
A7667D

CSS Examples

Text

The CSS property to change the color of the text to Hex F23F80 is called "color". The color property can be set on classes, ids or directly on the HTML element.

This example shows how text in the color #F23F80 looks like.

```
.text, #text, p{  
    color:#F23F80  
}
```

If you want to add a text shadow in that color use the text-shadow property, you can generate a text shadow directly with our [CSS Text Shadow Generator](#).

Here you see how black text with a 4 pixel #F23F80 colored shadow looks like.

```
.shadow{ text-shadow: 4px 4px 2px #F23F80
}
```

Border

The CSS property to change the border of an element to Hex F23F80 is called "border". The border property can be set on classes, ids or directly on the HTML element.

This example shows the color as border, it can be applied via the CSS property "border" or "border-color".

```
.border, #border, table{ border:4px solid
#F23F80 }
```

If only the border color should be changed use the property `border-color`.

```
.border{ border-color:#F23F80 }
```

If you want to add a box shadow in that color use:

Here you see how a box with a 4 pixel #F23F80 colored shadow looks like.

```
.boxshadow{ -moz-box-shadow:4px 4px 4px  
4px #F23F80; -webkit-box-shadow:4px 4px  
4px 4px #F23F80; box-shadow:4px 4px 4px  
4px #F23F80 }
```

Background

The CSS property to change the background color of an element to Hex F23F80 is called "background". The background property can be set on classes, ids or directly on the HTML element.

```
.background, #background, body{  
background:#F23F80 }
```

If only the background color should be changed can be used:

```
.background{ background-color:#F23F80 }
```

This example shows the color as background, it is applied via the CSS property "background".

To optimize and compress your CSS code, you can use our [online CSS compressor and optimizer](#) based on csstidy. If you want to create a linear or radial gradient as background or border, check our [CSS Gradient Generator](#).

Hey! You found this booklet interesting? Support Converting Colors with the new Membership Option!

The pro membership hides all ads, plus gives you double the colors in the color bucket, and more awesome pro features!

[Learn more, Memberships starting at \\$2.50/m!](#)

**Follow me
on Twitter!**

@ConvertingColor