

# Converting Colors

Hex(F24A70)

Have a look what the booklet for  
Hex(F24A70) contains.

<b>Hex(F24A70)</b> .....	3
<b><i>Conversions</i></b> .....	4
<b><i>Details</i></b> .....	6
<b><i>Harmonies</i></b> .....	11
<b><i>Previews</i></b> .....	23
<b><i>Color Blindness Simulation</i></b> .....	26
<b><i>CSS Examples</i></b> .....	29

**Color**

**Hex(F24A70)**

# Conversions

## Conversions Part 1

Format	Color
Hex	F24A70
RGB	242, 74, 112
RGB Percent	95%, 29%, 44%
CMY	0.0510, 0.7098, 0.5608
CMYK	0.00, 0.69, 0.54, 0.05
HSL	346°, 87%, 62%
HSV	346°, 69%, 95%
XYZ	41.9914, 24.9447, 17.9308
YIQ	128.5640, 87.9300, 47.4340

# Conversions

## Conversions Part 2

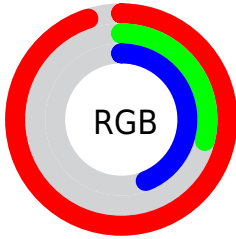
<b>Format</b>	<b>Color</b>
<b>R<sub>YB</sub></b>	242, 74, 112
Decimal	15878768
CIE <sub>Lab</sub>	57.02, 66.06, 16.27
CIE <sub>LCh</sub>	57, 68.039, 13.838
Yxy	24.9447, 0.4948, 0.2939
Android (android.graphics.Color)	4294068848 (0xFFFF24A70)
YUV	128.5640, -8.1661, 99.4834
Hunter-Lab	49.9446, 62.6723, 13.6753

# Details

The Hex color **F24A70** is a dark color, and the websafe version is hex **FF3366**. The color can be described as middle washed rose. A complement of this color would be **4AF2CC**, and the grayscale version is **818181**.

A 20% lighter version of the original color is **FF85A3**, and **B40041** is the 20% darker color. If you saturate the color by 10%, you get **F2325D**, and if you desaturate by 10%, it is **F26283**.

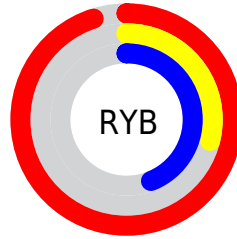
# Distribution



Red (95%)

Green (29%)

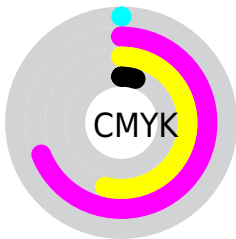
Blue (44%)



Red (95%)

Yellow (29%)

Blue (44%)

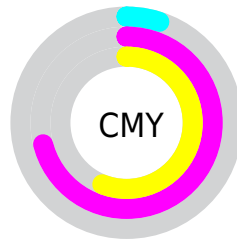


Cyan (0%)

Magenta (69%)

Yellow (54%)

Black (5%)



Cyan (5%)

Magenta (71%)

Yellow (56%)

# Brightness & Saturation Gradients

These gradients show how the Hex color F24A70 changes by changing the brightness by 10 percent. The first figure shows a shift by +10% for each color and the second figure -10%.

Similar to the brightness gradients but the following saturation gradients show a change of the Hex color F24A70 by changing the saturation by 10% instead.



 F24A70

 F24A70

FFFFFF

 D32858

 FF85A3

 B40041

 FFA2BE

 95002B

 FFBFDA

 770017

 FFDCF7

 590001

 FFFAFF

 3C0003

 160000

 000000

 F24A70

 F24A70

 F2325D

 F26283

 F21A4B

 F27A95

 F20138

 F293A8

 F20037

 F2ABBB

 F2C3CE

 F2DBE0

 F2F3F3

 F2FFFF

# Harmonies

## Analogous

The Analogous color harmony consists of three colors that are next to each other on the color wheel.



E250AB



F24A70



E36038

# Triad

The Triadic color harmony groups three colors that are evenly spaced from another and form a triangle on the color wheel.



F24A70



449B29



0099FB

# Complementary

The Complementary color scheme is a pair of colors which are on the opposite of each other on the color wheel.



F24A70



4AF2CC

# Split Complementary

Split-complementary colors differ from the complementary color scheme. The scheme consists of three colors, the original color and two neighbors of the complement color.



00A2DA



F24A70



00A266

# Square

The Square scheme is like the rectangle color scheme, but the four colors are evenly spaced on the color wheel.



F24A70



8B8F00



00A4A4



3187FD

# Rectangle

The Rectangle color scheme consists of four colors that form a rectangle on the color wheel.



F24A70



CD7211



00A4A4



009CF3



# Sweetspot

The Sweet Spot groups the original color and five complimentary colors.



F24A70



FFC9D6



CB4AF2



806067



000000



808080



# Same Dimension

The Same Dimension uses a secret algorithm to generate beautiful new colors.



F24A70



FF2B5B



F2774A



786C6F



B8002A



38000D



# Inverse Universe

The Inverse Universe completely reimagines the original color for something new.



F24A70



FF2B5B



4AC5F2



786C6F



B8002A



38000D



# Previews

## White Background



This preview shows how the Hex color F24A70 looks on a white background.

## Color Contrast Check

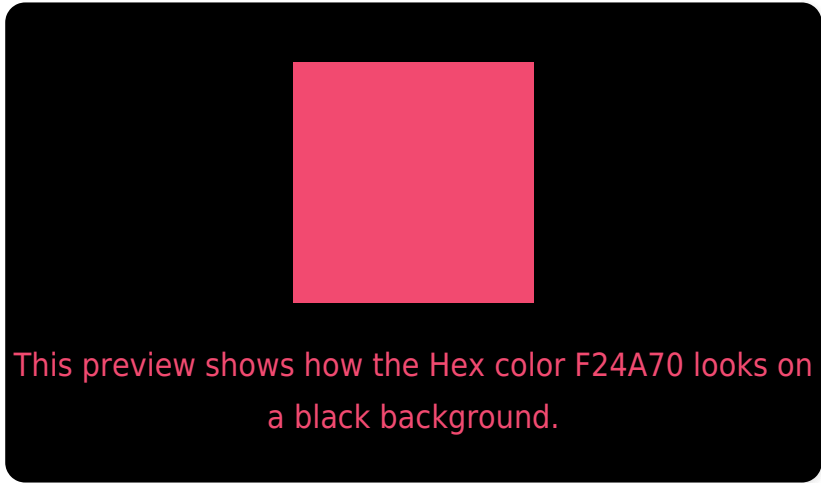
Large Text (above 18pt) WCAG AA ✓ Pass

Any Text WCAG AA × Fail

Large Text (above 18pt) WCAG AAA × Fail

Any Text WCAG AAA × Fail

# Black Background



## Color Contrast Check

Large Text (above 18pt) WCAG AA ✓ Pass

Any Text WCAG AA ✓ Pass

Large Text (above 18pt) WCAG AAA ✓ Pass

Any Text WCAG AAA × Fail

If you want to check with other color combinations, try the [Color Contrast Checker](#).



## Hex F24A70 Background



This preview shows how black text looks on a background with the Hex color F24A70.

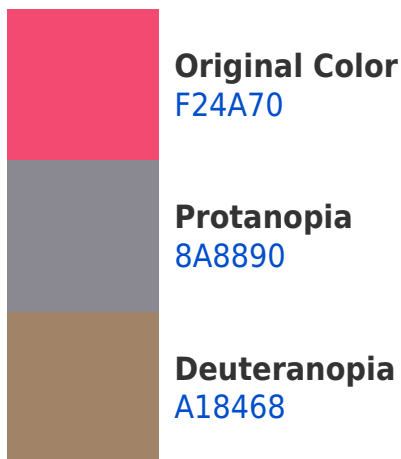


This preview shows how white text looks on a background with the Hex color F24A70.

# Color Blindness Simulation

Color vision deficiency is a very complex topic, and I could not describe the different causes any better than Wikipedia does, so if you want to learn more, you should check out their [article about color blindness](#).

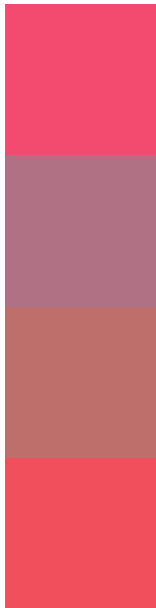
## Dichromacy





**Tritanopia**  
F15054

# Trichromacy



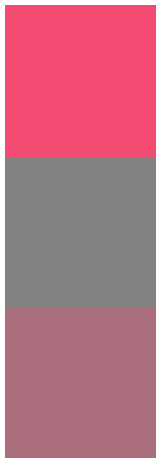
**Original Color**  
F24A70

**Protanomaly**  
B07184

**Deuteranomaly**  
BE6F6B

**Tritanomaly**  
F14E5E

# Monochromacy



**Original Color**  
F24A70

**Achromatopsia**  
818181

**Achromatomaly**  
AA6D7B

# CSS Examples

## Text

The CSS property to change the color of the text to Hex F24A70 is called "color". The color property can be set on classes, ids or directly on the HTML element.

This example shows how text in the color #F24A70 looks like.

```
.text, #text, p{  
    color:#F24A70  
}
```

If you want to add a text shadow in that color use the text-shadow property, you can generate a text shadow directly with our [CSS Text Shadow Generator](#).

Here you see how black text with a 4 pixel #F24A70 colored shadow looks like.

```
.shadow{ text-shadow: 4px 4px 2px #F24A70
}
```

## Border

The CSS property to change the border of an element to Hex F24A70 is called "border". The border property can be set on classes, ids or directly on the HTML element.

This example shows the color as border, it can be applied via the CSS property "border" or "border-color".

```
.border, #border, table{ border:4px solid
#F24A70 }
```

If only the border color should be changed use the property `border-color`.

```
.border{ border-color:#F24A70 }
```

If you want to add a box shadow in that color use:

Here you see how a box with a 4 pixel #F24A70 colored shadow looks like.

```
.boxshadow{ -moz-box-shadow:4px 4px 4px  
4px #F24A70; -webkit-box-shadow:4px 4px  
4px 4px #F24A70; box-shadow:4px 4px 4px  
4px #F24A70 }
```

# Background

The CSS property to change the background color of an element to Hex F24A70 is called "background". The background property can be set on classes, ids or directly on the HTML element.

```
.background, #background, body{  
background:#F24A70 }
```

If only the background color should be changed can be used:

```
.background{ background-color:#F24A70 }
```

This example shows the color as background, it is applied via the CSS property "background".

To optimize and compress your CSS code, you can use our [online CSS compressor and optimizer](#) based on csstidy. If you want to create a linear or radial gradient as background or border, check our [CSS Gradient Generator](#).



Hey! You found this booklet interesting? Support Converting Colors with the new Membership Option!

The pro membership hides all ads, plus gives you double the colors in the color bucket, and more awesome pro features!

**[Learn more, Memberships starting at \\$2.50/m!](#)**

**Follow me  
on Twitter!**

@ConvertingColor