

# Converting Colors

Hex(F24A87)

Have a look what the booklet for  
Hex(F24A87) contains.

<b>Hex(F24A87)</b> .....	3
<i><b>Conversions</b></i> .....	4
<i><b>Details</b></i> .....	6
<i><b>Harmonies</b></i> .....	11
<i><b>Previews</b></i> .....	23
<i><b>Color Blindness Simulation</b></i> .....	26
<i><b>CSS Examples</b></i> .....	29

# **Color**

**Hex(F24A87)**

# Conversions

## Conversions Part 1

Format	Color
Hex	F24A87
RGB	242, 74, 135
RGB Percent	95%, 29%, 53%
CMY	0.0510, 0.7098, 0.4706
CMYK	0.00, 0.69, 0.44, 0.05
HSL	338°, 87%, 62%
HSV	338°, 69%, 95%
XYZ	43.4399, 25.5241, 25.5588
YIQ	131.1860, 80.5470, 54.5870

# Conversions

## Conversions Part 2

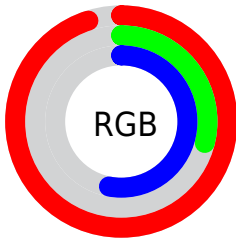
<b>Format</b>	<b>Color</b>
<b>R<sub>YB</sub></b>	242, 74, 135
Decimal	15878791
CIE <sub>Lab</sub>	57.58, 67.98, 3.49
CIE <sub>LCh</sub>	58, 68.065, 2.941
Yxy	25.5241, 0.4596, 0.2700
Android (android.graphics.Color)	4294068871 (0xFFFF24A87)
YUV	131.1860, 1.8803, 97.1839
Hunter-Lab	50.5214, 65.0677, 5.3701

# Details

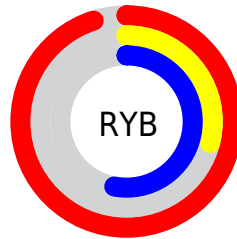
The Hex color **F24A87** is a light color, and the websafe version is hex **FF6699**. The color can be described as light washed rose. A complement of this color would be **4AF2B5**, and the grayscale version is **838383**.

A 20% lighter version of the original color is **FF85BC**, and **B40056** is the 20% darker color. If you saturate the color by 10%, you get **F23278**, and if you desaturate by 10%, it is **F26296**.

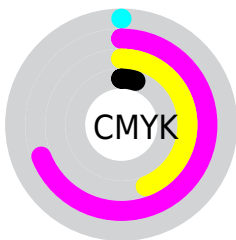
# Distribution



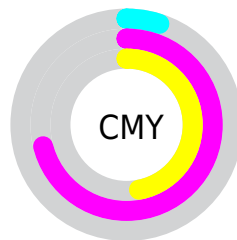
- Red (95%)
- Green (29%)
- Blue (53%)



- Red (95%)
- Yellow (29%)
- Blue (53%)



- Cyan (0%)
- Magenta (69%)
- Yellow (44%)
- Black (5%)



- Cyan (5%)
- Magenta (71%)
- Yellow (47%)

# Brightness & Saturation Gradients

These gradients show how the Hex color F24A87 changes by changing the brightness by 10 percent. The first figure shows a shift by +10% for each color and the second figure -10%.

Similar to the brightness gradients but the following saturation gradients show a change of the Hex color F24A87 by changing the saturation by 10% instead.



 F24A87

 F24A87

FFFFFF

 D3286E

 FF85BC

 B40056

 FFA2D8

 96003F

 FFC0F4

 780029

 FFDDFF

 5B0015

 FFFBFF

 3F0003

 1C0001

 000000

 F24A87

 F24A87

 F23278

 F26296

 F21A68

 F27AA6

 F20159

 F293B5

 F20058

 F2ABC5

 F2C3D4

 F2DBE3

 F2F3F3

 F2FFFF

# Harmonies

## Analogous

The Analogous color harmony consists of three colors that are next to each other on the color wheel.



D65BC1



F24A87



ED584D

# Triad

The Triadic color harmony groups three colors that are evenly spaced from another and form a triangle on the color wheel.



F24A87



649912



009EF4

# Complementary

The Complementary color scheme is a pair of colors which are on the opposite of each other on the color wheel.



F24A87



4AF2B5

# Split Complementary

Split-complementary colors differ from the complementary color scheme. The scheme consists of three colors, the original color and two neighbors of the complement color.



00A5CA



F24A87



00A251

# Square

The Square scheme is like the rectangle color scheme, but the four colors are evenly spaced on the color wheel.



F24A87



A18A00



00A58F



0090FF

# Rectangle

The Rectangle color scheme consists of four colors that form a rectangle on the color wheel.



F24A87



DC6929



00A58F



00A1E9



# Sweetspot

The Sweet Spot groups the original color and five complimentary colors.



F24A87



FFC9DD



B44AF2



80606B



000000



808080



# Same Dimension

The Same Dimension uses a secret algorithm to generate beautiful new colors.



F24A87



FF2B78



F2604A



786C70



B80043



380014



# Inverse Universe

The Inverse Universe completely reimagines the original color for something new.



F24A87



FF2B78



4ADCF2



786C70



B80043



380014



# Previews

## White Background



This preview shows how the Hex color F24A87 looks on a white background.

## Color Contrast Check

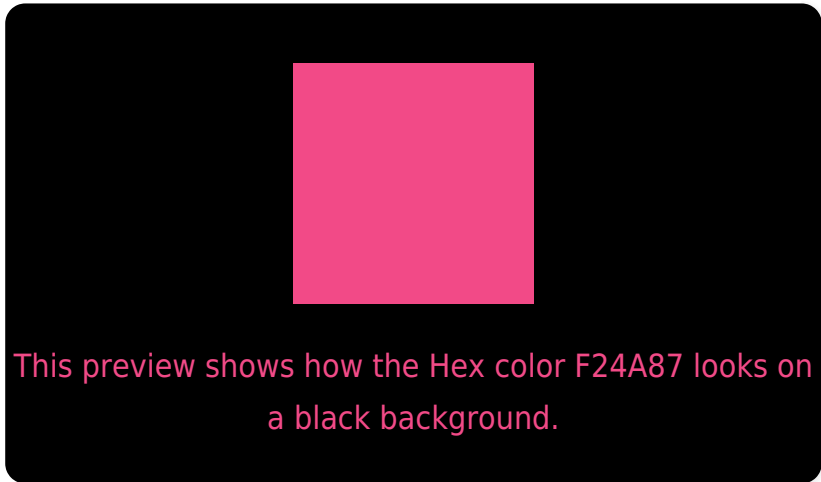
Large Text (above 18pt) WCAG AA ✓ Pass

Any Text WCAG AA × Fail

Large Text (above 18pt) WCAG AAA × Fail

Any Text WCAG AAA × Fail

# Black Background



## Color Contrast Check

Large Text (above 18pt) WCAG AA ✓ Pass

Any Text WCAG AA ✓ Pass

Large Text (above 18pt) WCAG AAA ✓ Pass

Any Text WCAG AAA × Fail

If you want to check with other color combinations, try the [Color Contrast Checker](#).



## Hex F24A87 Background



This preview shows how black text looks on a background with the Hex color F24A87.



This preview shows how white text looks on a background with the Hex color F24A87.

# Color Blindness Simulation

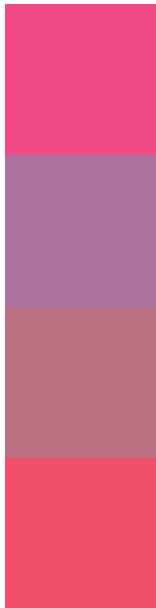
Color vision deficiency is a very complex topic, and I could not describe the different causes any better than Wikipedia does, so if you want to learn more, you should check out their [article about color blindness](#).

## Dichromacy





# Trichromacy



**Original Color**  
F24A87

**Protanomaly**  
AB729F

**Deuteranomaly**  
BB7082

**Tritanomaly**  
F0506A

# Monochromacy



**Original Color**  
F24A87

**Achromatopsia**  
838383

**Achromatomaly**  
AB6E84

# CSS Examples

## Text

The CSS property to change the color of the text to Hex F24A87 is called "color". The color property can be set on classes, ids or directly on the HTML element.

This example shows how text in the color #F24A87 looks like.

```
.text, #text, p{  
    color:#F24A87  
}
```

If you want to add a text shadow in that color use the text-shadow property, you can generate a text shadow directly with our [CSS Text Shadow Generator](#).

Here you see how black text with a 4 pixel #F24A87 colored shadow looks like.

```
.shadow{ text-shadow: 4px 4px 2px #F24A87
}
```

## Border

The CSS property to change the border of an element to Hex F24A87 is called "border". The border property can be set on classes, ids or directly on the HTML element.

This example shows the color as border, it can be applied via the CSS property "border" or "border-color".

```
.border, #border, table{ border:4px solid
#F24A87 }
```

If only the border color should be changed use the property border-color.

```
.border{ border-color:#F24A87 }
```

If you want to add a box shadow in that color use:

Here you see how a box with a 4 pixel #F24A87 colored shadow looks like.

```
.boxshadow{ -moz-box-shadow:4px 4px 4px  
4px #F24A87; -webkit-box-shadow:4px 4px  
4px 4px #F24A87; box-shadow:4px 4px 4px  
4px #F24A87 }
```

# Background

The CSS property to change the background color of an element to Hex F24A87 is called "background". The background property can be set on classes, ids or directly on the HTML element.

```
.background, #background, body{  
background:#F24A87 }
```

If only the background color should be changed can be used:

```
.background{ background-color:#F24A87 }
```

This example shows the color as background, it is applied via the CSS property "background".

To optimize and compress your CSS code, you can use our [online CSS compressor and optimizer](#) based on csstidy. If you want to create a linear or radial gradient as background or border, check our [CSS Gradient Generator](#).



Hey! You found this booklet interesting? Support Converting Colors with the new Membership Option!

The pro membership hides all ads, plus gives you double the colors in the color bucket, and more awesome pro features!

**[Learn more, Memberships starting at \\$2.50/m!](#)**

**Follow me  
on Twitter!**

@ConvertingColor