

# Converting Colors

Hex(F25E78)

Have a look what the booklet for  
Hex(F25E78) contains.

<b>Hex(F25E78)</b> .....	3
<b><i>Conversions</i></b> .....	4
<b><i>Details</i></b> .....	6
<b><i>Harmonies</i></b> .....	11
<b><i>Previews</i></b> .....	23
<b><i>Color Blindness Simulation</i></b> .....	26
<b><i>CSS Examples</i></b> .....	29

# **Color**

**Hex(F25E78)**

# Conversions

## Conversions Part 1

Format	Color
Hex	F25E78
RGB	242, 94, 120
RGB Percent	95%, 37%, 47%
CMY	0.0510, 0.6314, 0.5294
CMYK	0.00, 0.61, 0.50, 0.05
HSL	349°, 85%, 66%
HSV	349°, 61%, 95%
XYZ	44.0108, 28.2387, 20.9003
YIQ	141.2160, 79.8620, 39.4620

# Conversions

## Conversions Part 2

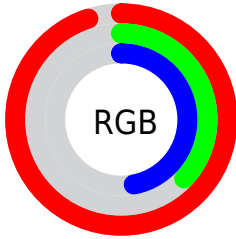
Format	Color
R <sub>Y</sub> B	242, 94, 120
Decimal	15883896
CIE Lab	60.10, 58.79, 15.84
CIE LCh	60, 60.885, 15.083
Yxy	28.2387, 0.4725, 0.3032
Android (android.graphics.Color)	4294073976 (0xFFFF25E78)
YUV	141.2160, -10.4595, 88.3876
Hunter-Lab	53.1401, 54.8391, 13.8790

# Details

The Hex color **F25E78** is a light color, and the websafe version is hex **FF6699**. The color can be described as light muted rose. A complement of this color would be **5EF2D8**, and the grayscale version is **8D8D8D**.

A 20% lighter version of the original color is **FF96AC**, and **B52148** is the 20% darker color. If you saturate the color by 10%, you get **F24664**, and if you desaturate by 10%, it is **F2768C**.

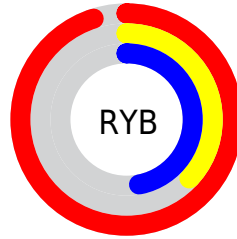
# Distribution



Red (95%)

Green (37%)

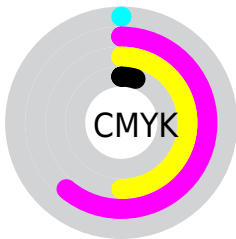
Blue (47%)



Red (95%)

Yellow (37%)

Blue (47%)

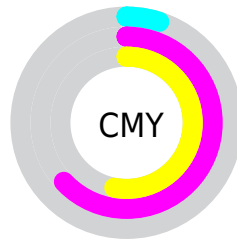


Cyan (0%)

Magenta (61%)

Yellow (50%)

Black (5%)



Cyan (5%)

Magenta (63%)

Yellow (53%)

# Brightness & Saturation Gradients

These gradients show how the Hex color F25E78 changes by changing the brightness by 10 percent. The first figure shows a shift by +10% for each color and the second figure -10%.

Similar to the brightness gradients but the following saturation gradients show a change of the Hex color F25E78 by changing the saturation by 10% instead.



 F25E78

 F25E78

FFFFFF

 D3415F

 FF96AC

 B52148

 FFB3C7

 960032

 FFD0E3

 79001D

 FFEDFF

 5B0003

 400003

 1E0001

 000000

 F25E78

 F25E78

 F24664

 F2768C

 F22E50

 F28EA0

 F2153C

 F2A7B4

 F2002B

 F2BFC8

 F2D7DC

 F2EFF0

 F2FFFF

# Harmonies

## Analogous

The Analogous color harmony consists of three colors that are next to each other on the color wheel.



E462AE



F25E78



E46E47

# Triad

The Triadic color harmony groups three colors that are evenly spaced from another and form a triangle on the color wheel.



F25E78



54A240



009EF8

# Complementary

The Complementary color scheme is a pair of colors which are on the opposite of each other on the color wheel.



F25E78



5EF2D8

# Split Complementary

Split-complementary colors differ from the complementary color scheme. The scheme consists of three colors, the original color and two neighbors of the complement color.



00A8DC



F25E78



00A973

# Square

The Square scheme is like the rectangle color scheme, but the four colors are evenly spaced on the color wheel.



F25E78



939719



00AAAB



5A8EF9

# Rectangle

The Rectangle color scheme consists of four colors that form a rectangle on the color wheel.



F25E78



CF7D2B



00AAAB



00A2F2



# Sweetspot

The Sweet Spot groups the original color and five complimentary colors.



F25E78



FFD1D9



D75EF2



806368



000000



808080



# Same Dimension

The Same Dimension uses a secret algorithm to generate beautiful new colors.



F25E78



FF4566



F28D5E



786C6E



B80020



38000A



# Inverse Universe

The Inverse Universe completely reimagines the original color for something new.



F25E78



FF4566



5EC3F2



786C6E



B80020



38000A



# Previews

## White Background



This preview shows how the Hex color F25E78 looks on a white background.

## Color Contrast Check

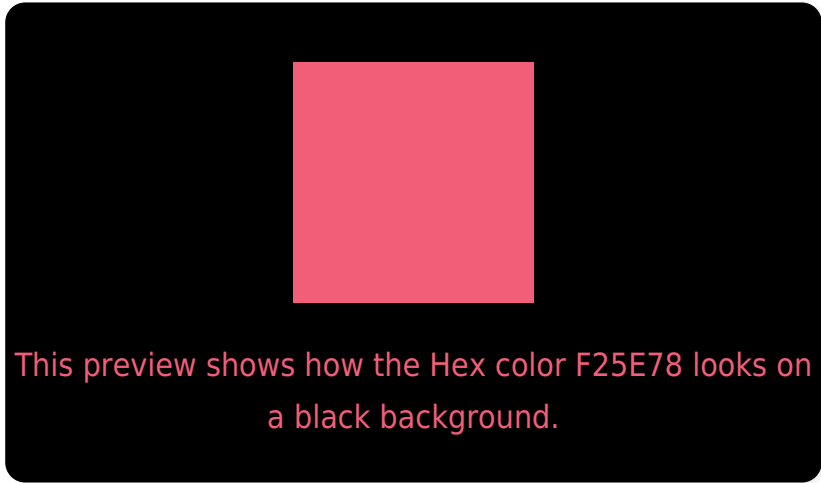
Large Text (above 18pt) WCAG AA ✓ Pass

Any Text WCAG AA × Fail

Large Text (above 18pt) WCAG AAA × Fail

Any Text WCAG AAA × Fail

# Black Background



## Color Contrast Check

Large Text (above 18pt) WCAG AA ✓ Pass

Any Text WCAG AA ✓ Pass

Large Text (above 18pt) WCAG AAA ✓ Pass

Any Text WCAG AAA × Fail

If you want to check with other color combinations, try the [Color Contrast Checker](#).



## Hex F25E78 Background



This preview shows how black text looks on a background with the Hex color F25E78.

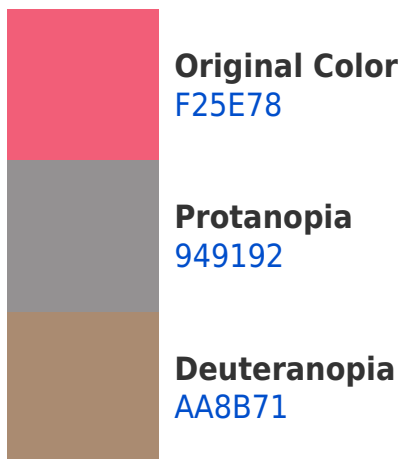


This preview shows how white text looks on a background with the Hex color F25E78.

# Color Blindness Simulation

Color vision deficiency is a very complex topic, and I could not describe the different causes any better than Wikipedia does, so if you want to learn more, you should check out their [article about color blindness](#).

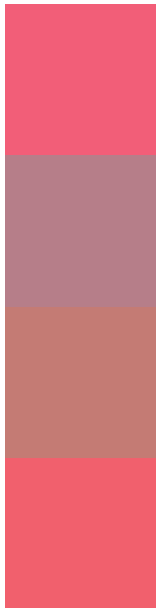
## Dichromacy





**Tritanopia**  
F16167

# Trichromacy



**Original Color**  
F25E78

**Protanomaly**  
B67E89

**Deuteranomaly**  
C47B74

**Tritanomaly**  
F1606D

# Monochromacy



**Original Color**  
F25E78

**Achromatopsia**  
8D8D8D

**Achromatomaly**  
B27C85

# CSS Examples

## Text

The CSS property to change the color of the text to Hex F25E78 is called "color". The color property can be set on classes, ids or directly on the HTML element.

This example shows how text in the color #F25E78 looks like.

```
.text, #text, p{  
    color:#F25E78  
}
```

If you want to add a text shadow in that color use the text-shadow property, you can generate a text shadow directly with our [CSS Text Shadow Generator](#).

Here you see how black text with a 4 pixel #F25E78 colored shadow looks like.

```
.shadow{ text-shadow: 4px 4px 2px #F25E78
}
```

## Border

The CSS property to change the border of an element to Hex F25E78 is called "border". The border property can be set on classes, ids or directly on the HTML element.

This example shows the color as border, it can be applied via the CSS property "border" or "border-color".

```
.border, #border, table{ border:4px solid
#F25E78 }
```

If only the border color should be changed use the property `border-color`.

```
.border{ border-color:#F25E78 }
```

If you want to add a box shadow in that color use:

Here you see how a box with a 4 pixel #F25E78 colored shadow looks like.

```
.boxshadow{ -moz-box-shadow:4px 4px 4px  
4px #F25E78; -webkit-box-shadow:4px 4px  
4px 4px #F25E78; box-shadow:4px 4px 4px  
4px #F25E78 }
```

# Background

The CSS property to change the background color of an element to Hex F25E78 is called "background". The background property can be set on classes, ids or directly on the HTML element.

```
.background, #background, body{  
background:#F25E78 }
```

If only the background color should be changed can be used:

```
.background{ background-color:#F25E78 }
```

This example shows the color as background, it is applied via the CSS property "background".

To optimize and compress your CSS code, you can use our [online CSS compressor and optimizer](#) based on csstidy. If you want to create a linear or radial gradient as background or border, check our [CSS Gradient Generator](#).



Hey! You found this booklet interesting? Support Converting Colors with the new Membership Option!

The pro membership hides all ads, plus gives you double the colors in the color bucket, and more awesome pro features!

**[Learn more, Memberships starting at \\$2.50/m!](#)**

**Follow me  
on Twitter!**

@ConvertingColor