

# Converting Colors

Hex(F26391)

Have a look what the booklet for  
Hex(F26391) contains.

<b>Hex(F26391)</b> .....	3
<i><b>Conversions</b></i> .....	4
<i><b>Details</b></i> .....	6
<i><b>Harmonies</b></i> .....	11
<i><b>Previews</b></i> .....	23
<i><b>Color Blindness Simulation</b></i> .....	26
<i><b>CSS Examples</b></i> .....	29

**Color**

**Hex(F26391)**

# Conversions

## Conversions Part 1

Format	Color
Hex	F26391
RGB	242, 99, 145
RGB Percent	95%, 39%, 57%
CMY	0.0510, 0.6118, 0.4314
CMYK	0.00, 0.59, 0.40, 0.05
HSL	341°, 85%, 67%
HSV	341°, 59%, 95%
XYZ	46.1906, 29.8453, 30.1143
YIQ	147.0010, 70.4620, 44.6220

# Conversions

## Conversions Part 2

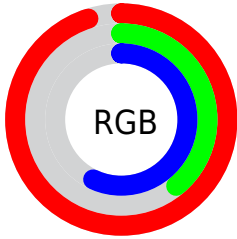
<b>Format</b>	<b>Color</b>
R <sub>Y</sub> B	242, 99, 145
Decimal	15885201
CIE Lab	61.52, 58.96, 3.35
CIE LCh	62, 59.060, 3.251
Yxy	29.8453, 0.4351, 0.2812
Android (android.graphics.Color)	4294075281 (0xFF26391)
YUV	147.0010, -0.9865, 83.3141
Hunter-Lab	54.6308, 55.3187, 5.5590

# Details

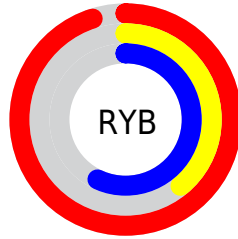
The Hex color **F26391** is a light color, and the websafe version is hex **FF6699**. A complement of this color would be **63F2C4**, and the grayscale version is **939393**.

A 20% lighter version of the original color is **FF9BC7**, and **B6275F** is the 20% darker color. If you saturate the color by 10%, you get **F24B81**, and if you desaturate by 10%, it is **F27BA1**.

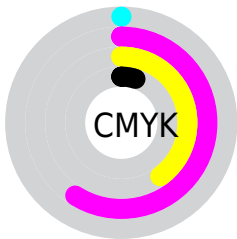
# Distribution



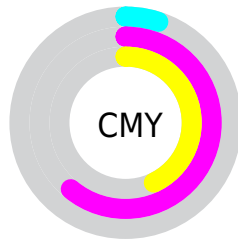
- Red (95%)
- Green (39%)
- Blue (57%)



- Red (95%)
- Yellow (39%)
- Blue (57%)



- Cyan (0%)
- Magenta (59%)
- Yellow (40%)
- Black (5%)



- Cyan (5%)
- Magenta (61%)
- Yellow (43%)

# Brightness & Saturation Gradients

These gradients show how the Hex color F26391 changes by changing the brightness by 10 percent. The first figure shows a shift by +10% for each color and the second figure -10%.

Similar to the brightness gradients but the following saturation gradients show a change of the Hex color F26391 by changing the saturation by 10% instead.



 F26391

 F26391

FFFFFF

 D44777

 FF9BC7

 B6275F

 FFB8E3

 980047

 FFD5FF

 7B0031

 FFF2FF

 5E001D

 440002

 240001

 000000

 F26391

 F26391

 F24B81

 F27BA1

 F23370

 F293B2

 F21A60

 F2ACC2

 F2024F

 F2C4D3

 F2004E

 F2DCE3

 F2F4F3

 F2FFFF

# Harmonies

## Analogous

The Analogous color harmony consists of three colors that are next to each other on the color wheel.



D86EC5



F26391



EF6C5E

# Triad

The Triadic color harmony groups three colors that are evenly spaced from another and form a triangle on the color wheel.



F26391



75A236



00A6F1

# Complementary

The Complementary color scheme is a pair of colors which are on the opposite of each other on the color wheel.



F26391



63F2C4

# Split Complementary

Split-complementary colors differ from the complementary color scheme. The scheme consists of three colors, the original color and two neighbors of the complement color.



00ADCD



F26391



14AA63

# Square

The Square scheme is like the rectangle color scheme, but the four colors are evenly spaced on the color wheel.



F26391



AB9420



00AE99



0B99FD

# Rectangle

The Rectangle color scheme consists of four colors that form a rectangle on the color wheel.



F26391



DF7941



00AE99



00A9E8



# Sweetspot

The Sweet Spot groups the original color and five complimentary colors.



F26391



FFD1E0



C263F2



80636C



000000



808080



# Same Dimension

The Same Dimension uses a secret algorithm to generate beautiful new colors.



F26391



FF4A84



F27B63



786C70



B8003B



380012



# Inverse Universe

The Inverse Universe completely reimagines the original color for something new.



F26391



FF4A84



63DAF2



786C70



B8003B



380012



# Previews

## White Background



This preview shows how the Hex color F26391 looks on a white background.

## Color Contrast Check

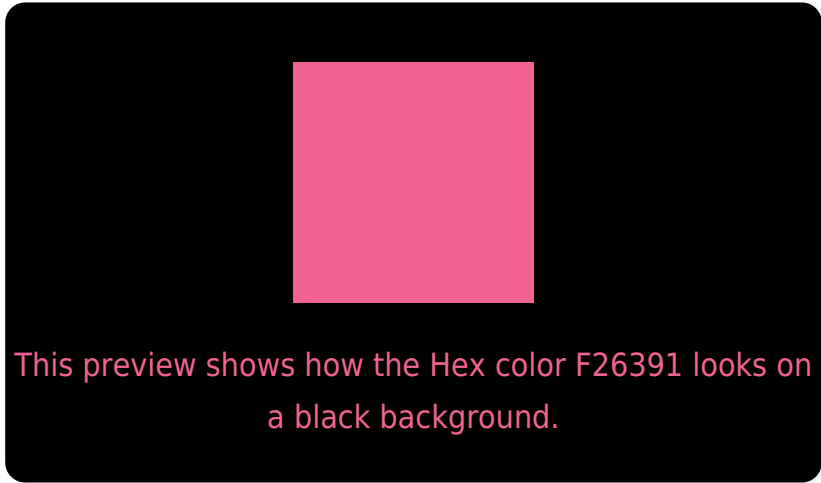
Large Text (above 18pt) WCAG AA ✓ Pass

Any Text WCAG AA × Fail

Large Text (above 18pt) WCAG AAA × Fail

Any Text WCAG AAA × Fail

# Black Background



## Color Contrast Check

Large Text (above 18pt) WCAG AA ✓ Pass

Any Text WCAG AA ✓ Pass

Large Text (above 18pt) WCAG AAA ✓ Pass

Any Text WCAG AAA × Fail

If you want to check with other color combinations, try the [Color Contrast Checker](#).



## Hex F26391 Background



This preview shows how black text looks on a background with the Hex color F26391.

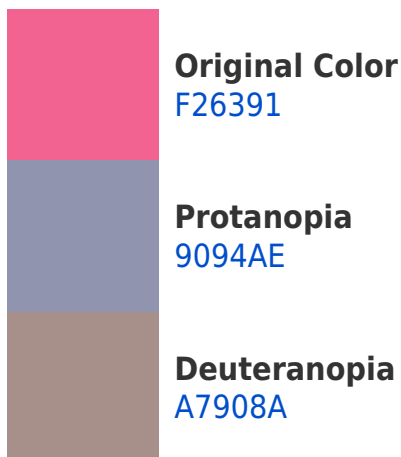



This preview shows how white text looks on a background with the Hex color F26391.

# Color Blindness Simulation

Color vision deficiency is a very complex topic, and I could not describe the different causes any better than Wikipedia does, so if you want to learn more, you should check out their [article about color blindness](#).

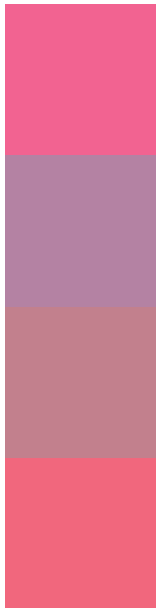
## Dichromacy





**Tritanopia**  
F06971

# Trichromacy



**Original Color**  
F26391

**Protanomaly**  
B482A3

**Deuteranomaly**  
C2808D

**Tritanomaly**  
F1677D

# Monochromacy



**Original Color**  
F26391

**Achromatopsia**  
939393

**Achromatomaly**  
B68292

# CSS Examples

## Text

The CSS property to change the color of the text to Hex F26391 is called "color". The color property can be set on classes, ids or directly on the HTML element.

This example shows how text in the color #F26391 looks like.

```
.text, #text, p{  
    color:#F26391  
}
```

If you want to add a text shadow in that color use the text-shadow property, you can generate a text shadow directly with our [CSS Text Shadow Generator](#).

Here you see how black text with a 4 pixel #F26391 colored shadow looks like.

```
.shadow{ text-shadow: 4px 4px 2px #F26391
}
```

## Border

The CSS property to change the border of an element to Hex F26391 is called "border". The border property can be set on classes, ids or directly on the HTML element.

This example shows the color as border, it can be applied via the CSS property "border" or "border-color".

```
.border, #border, table{ border:4px solid
#F26391 }
```

If only the border color should be changed use the property `border-color`.

```
.border{ border-color:#F26391 }
```

If you want to add a box shadow in that color use:

Here you see how a box with a 4 pixel #F26391 colored shadow looks like.

```
.boxshadow{ -moz-box-shadow:4px 4px 4px  
4px #F26391; -webkit-box-shadow:4px 4px  
4px 4px #F26391; box-shadow:4px 4px 4px  
4px #F26391 }
```

# Background

The CSS property to change the background color of an element to Hex F26391 is called "background". The background property can be set on classes, ids or directly on the HTML element.

```
.background, #background, body{  
background:#F26391 }
```

If only the background color should be changed can be used:

```
.background{ background-color:#F26391 }
```

This example shows the color as background, it is applied via the CSS property "background".

To optimize and compress your CSS code, you can use our [online CSS compressor and optimizer](#) based on csstidy. If you want to create a linear or radial gradient as background or border, check our [CSS Gradient Generator](#).



Hey! You found this booklet interesting? Support Converting Colors with the new Membership Option!

The pro membership hides all ads, plus gives you double the colors in the color bucket, and more awesome pro features!

**[Learn more, Memberships starting at \\$2.50/m!](#)**

**Follow me  
on Twitter!**

@ConvertingColor