

Converting Colors

Hex(F26796)

Have a look what the booklet for
Hex(F26796) contains.

Hex(F26796)	3
<i>Conversions</i>	4
<i>Details</i>	6
<i>Harmonies</i>	11
<i>Previews</i>	23
<i>Color Blindness Simulation</i>	26
<i>CSS Examples</i>	29

Color

Hex(F26796)

Conversions

Conversions Part 1

Format	Color
Hex	F26796
RGB	242, 103, 150
RGB Percent	95%, 40%, 59%
CMY	0.0510, 0.5961, 0.4118
CMYK	0.00, 0.57, 0.38, 0.05
HSL	340°, 84%, 68%
HSV	340°, 57%, 95%
XYZ	46.9732, 30.7797, 32.3195
YIQ	149.9190, 67.7570, 44.0850

Conversions

Conversions Part 2

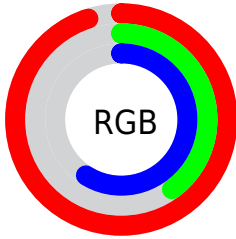
Format	Color
R_{YB}	242, 103, 150
Decimal	15886230
CIE Lab	62.32, 57.72, 1.62
CIE LCh	62, 57.744, 1.611
Yxy	30.7797, 0.4267, 0.2796
Android (android.graphics.Color)	4294076310 (0xFF26796)
YUV	149.9190, 0.0399, 80.7550
Hunter-Lab	55.4795, 54.0427, 4.2964

Details

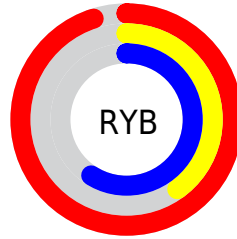
The Hex color **F26796** is a light color, and the websafe version is hex **FF6699**. A complement of this color would be **67F2C3**, and the grayscale version is **969696**.

A 20% lighter version of the original color is **FF9FCC**, and **B62D63** is the 20% darker color. If you saturate the color by 10%, you get **F24F86**, and if you desaturate by 10%, it is **F27FA6**.

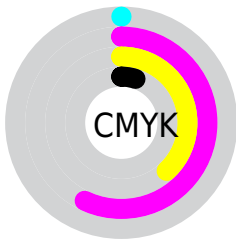
Distribution



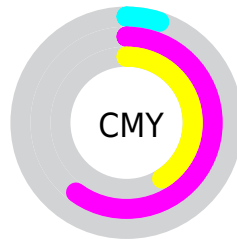
- Red (95%)
- Green (40%)
- Blue (59%)



- Red (95%)
- Yellow (40%)
- Blue (59%)



- Cyan (0%)
- Magenta (57%)
- Yellow (38%)
- Black (5%)



- Cyan (5%)
- Magenta (60%)
- Yellow (41%)

Brightness & Saturation Gradients

These gradients show how the Hex color F26796 changes by changing the brightness by 10 percent. The first figure shows a shift by +10% for each color and the second figure -10%.

Similar to the brightness gradients but the following saturation gradients show a change of the Hex color F26796 by changing the saturation by 10% instead.

 F26796

 F26796

FFFFFF

 D44B7C

 FF9FCC

 B62D63

 FFBBE8

 98004C

 FFD8FF

 7B0035

 FFF6FF

 5F0020

 440008

 260001

 000000

 F26796

 F26796

 F24F86

 F27FA6

 F23776

 F297B6

 F21E66

 F2B0C6

 F20656

 F2C8D6

 F20052

 F2E0E6

 F2F8F6

 F2FFFF

Harmonies

Analogous

The Analogous color harmony consists of three colors that are next to each other on the color wheel.



D773C8



F26796



F06F64

Triad

The Triadic color harmony groups three colors that are evenly spaced from another and form a triangle on the color wheel.



F26796



7BA339



00A8F0

Complementary

The Complementary color scheme is a pair of colors which are on the opposite of each other on the color wheel.



F26796



67F2C3

Split Complementary

Split-complementary colors differ from the complementary color scheme. The scheme consists of three colors, the original color and two neighbors of the complement color.



00AFCB



F26796



2AAC64

Square

The Square scheme is like the rectangle color scheme, but the four colors are evenly spaced on the color wheel.



F26796



AF9526



00AF98



099CFD

Rectangle

The Rectangle color scheme consists of four colors that form a rectangle on the color wheel.



F26796



E27B47



00AF98



00ABE6

Sweetspot

The Sweet Spot groups the original color and five complimentary colors.



F26796



FFD4E2



C167F2



80666F



000000



808080

Same Dimension

The Same Dimension uses a secret algorithm to generate beautiful new colors.



F26796



FF4F8B



F27C67



786C70



B8003E



380013

Inverse Universe

The Inverse Universe completely reimagines the original color for something new.



F26796



FF4F8B



67DDF2



786C70



B8003E



380013

Previews

White Background



This preview shows how the Hex color F26796 looks on a white background.

Color Contrast Check

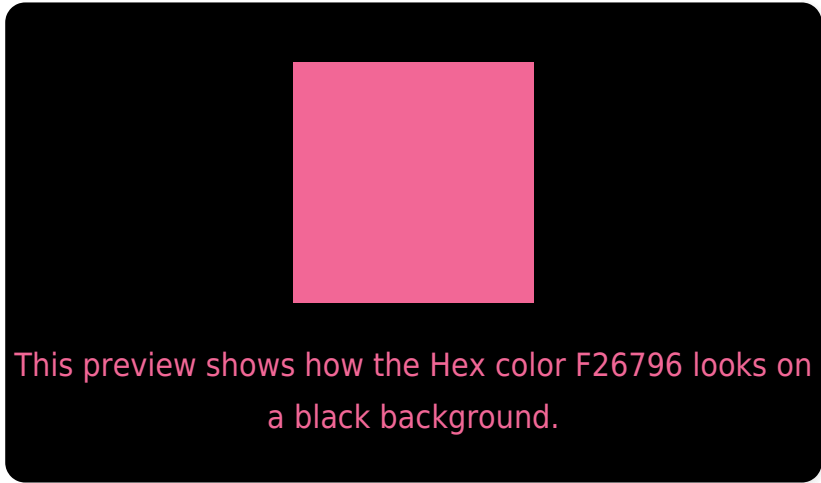
Large Text (above 18pt) WCAG AA × Fail

Any Text WCAG AA × Fail

Large Text (above 18pt) WCAG AAA × Fail

Any Text WCAG AAA × Fail

Black Background



Color Contrast Check

Large Text (above 18pt) WCAG AA ✓ Pass

Any Text WCAG AA ✓ Pass

Large Text (above 18pt) WCAG AAA ✓ Pass

Any Text WCAG AAA ✓ Pass

If you want to check with other color combinations, try the [Color Contrast Checker](#).

Hex F26796 Background



This preview shows how black text looks on a background with the Hex color F26796.

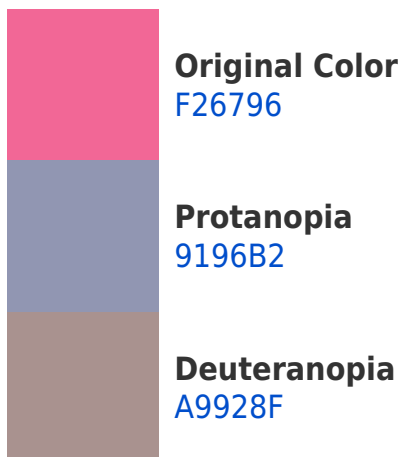


This preview shows how white text looks on a background with the Hex color F26796.

Color Blindness Simulation

Color vision deficiency is a very complex topic, and I could not describe the different causes any better than Wikipedia does, so if you want to learn more, you should check out their [article about color blindness](#).

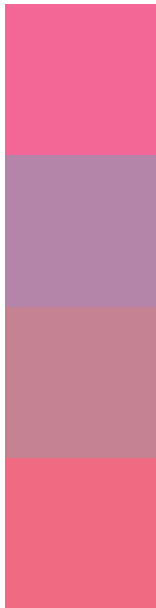
Dichromacy





Tritanopia
EF6E75

Trichromacy



Original Color
F26796

Protanomaly
B485A8

Deuteranomaly
C48292

Tritanomaly
F06B81

Monochromacy



Original Color
F26796

Achromatopsia
969696

Achromatomaly
B78596

CSS Examples

Text

The CSS property to change the color of the text to Hex F26796 is called "color". The color property can be set on classes, ids or directly on the HTML element.

This example shows how text in the color #F26796 looks like.

```
.text, #text, p{  
    color:#F26796  
}
```

If you want to add a text shadow in that color use the text-shadow property, you can generate a text shadow directly with our [CSS Text Shadow Generator](#).

Here you see how black text with a 4 pixel #F26796 colored shadow looks like.

```
.shadow{ text-shadow: 4px 4px 2px #F26796
}
```

Border

The CSS property to change the border of an element to Hex F26796 is called "border". The border property can be set on classes, ids or directly on the HTML element.

This example shows the color as border, it can be applied via the CSS property "border" or "border-color".

```
.border, #border, table{ border:4px solid
#F26796 }
```

If only the border color should be changed use the property `border-color`.

```
.border{ border-color:#F26796 }
```

If you want to add a box shadow in that color use:

Here you see how a box with a 4 pixel #F26796 colored shadow looks like.

```
.boxshadow{ -moz-box-shadow:4px 4px 4px  
4px #F26796; -webkit-box-shadow:4px 4px  
4px 4px #F26796; box-shadow:4px 4px 4px  
4px #F26796 }
```

Background

The CSS property to change the background color of an element to Hex F26796 is called "background". The background property can be set on classes, ids or directly on the HTML element.

```
.background, #background, body{  
background:#F26796 }
```

If only the background color should be changed can be used:

```
.background{ background-color:#F26796 }
```

This example shows the color as background, it is applied via the CSS property "background".

To optimize and compress your CSS code, you can use our [online CSS compressor and optimizer](#) based on csstidy. If you want to create a linear or radial gradient as background or border, check our [CSS Gradient Generator](#).

Hey! You found this booklet interesting? Support Converting Colors with the new Membership Option!

The pro membership hides all ads, plus gives you double the colors in the color bucket, and more awesome pro features!

[Learn more, Memberships starting at \\$2.50/m!](#)

**Follow me
on Twitter!**

@ConvertingColor