

Converting Colors

Hex(F28954)

Have a look what the booklet for
Hex(F28954) contains.

Hex(F28954)	3
<i>Conversions</i>	4
<i>Details</i>	6
<i>Harmonies</i>	11
<i>Previews</i>	23
<i>Color Blindness Simulation</i>	26
<i>CSS Examples</i>	29

Color

Hex(F28954)

Conversions

Conversions Part 1

Format	Color
Hex	F28954
RGB	242, 137, 84
RGB Percent	95%, 54%, 33%
CMY	0.0510, 0.4627, 0.6706
CMYK	0.00, 0.43, 0.65, 0.05
HSL	20°, 86%, 64%
HSV	20°, 65%, 95%
XYZ	47.1638, 37.4087, 13.1223
YIQ	162.3530, 79.5930, 5.7770

Conversions

Conversions Part 2

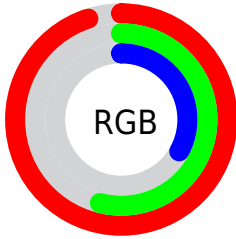
Format	Color
R _{YB}	242, 164, 84
Decimal	15894868
CIE Lab	67.58, 35.58, 45.32
CIE LCh	68, 57.615, 51.866
Yxy	37.4087, 0.4828, 0.3829
Android (android.graphics.Color)	4294084948 (0xFFFF28954)
YUV	162.3530, -38.6280, 69.8504
Hunter-Lab	61.1626, 30.6107, 30.0933

Details

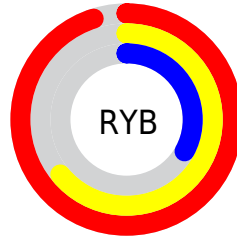
The Hex color **F28954** is a light color, and the websafe version is hex **FF9966**. The color can be described as light muted orange. A complement of this color would be **54BDF2**, and the grayscale version is **A3A3A3**.

A 20% lighter version of the original color is **FFBF87**, and **B55524** is the 20% darker color. If you saturate the color by 10%, you get **F2793C**, and if you desaturate by 10%, it is **F2996C**.

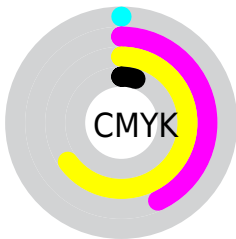
Distribution



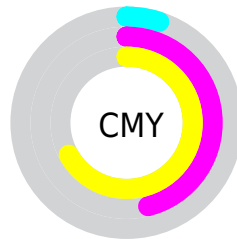
- Red (95%)
- Green (54%)
- Blue (33%)



- Red (95%)
- Yellow (64%)
- Blue (33%)



- Cyan (0%)
- Magenta (43%)
- Yellow (65%)
- Black (5%)



- Cyan (5%)
- Magenta (46%)
- Yellow (67%)

Brightness & Saturation Gradients

These gradients show how the Hex color F28954 changes by changing the brightness by 10 percent. The first figure shows a shift by +10% for each color and the second figure -10%.

Similar to the brightness gradients but the following saturation gradients show a change of the Hex color F28954 by changing the saturation by 10% instead.

 F28954

 F28954

FFFFFF

 D36F3C

 FFBF87

 B55524

 FFDCA2

 973D0A

 FFF8BD

 792400

 FFFFD9

 5C0800

 FFFFF6

 400000

 270001

 000000

 F28954

 F28954

 F2793C

 F2996C

 F26924

 F2A984

 F2590B

 F2B99D

 F25100

 F2C9B5

 F2D9CD

 F2E9E5

 F2FAFD

 F2FFFF

Harmonies

Analogous

The Analogous color harmony consists of three colors that are next to each other on the color wheel.



FF7981



F28954



CD9D38

Triad

The Triadic color harmony groups three colors that are evenly spaced from another and form a triangle on the color wheel.



F28954



00BD94



8E9DFF

Complementary

The Complementary color scheme is a pair of colors which are on the opposite of each other on the color wheel.



F28954



54BDF2

Split Complementary

Split-complementary colors differ from the complementary color scheme. The scheme consists of three colors, the original color and two neighbors of the complement color.



00AFFF



F28954



00BECA

Square

The Square scheme is like the rectangle color scheme, but the four colors are evenly spaced on the color wheel.



F28954



5CB861



00B9F5



D687E5

Rectangle

The Rectangle color scheme consists of four colors that form a rectangle on the color wheel.



F28954



AEA837



00B9F5



6BA3FF

Sweetspot

The Sweet Spot groups the original color and five complimentary colors.



F28954



FFDDCC



F254BD



806B61



000000



808080

Same Dimension

The Same Dimension uses a secret algorithm to generate beautiful new colors.



F28954



FF7B38



F2D854



78706C



B83E00



381300

Inverse Universe

The Inverse Universe completely reimagines the original color for something new.



54BDF2



38BCFF



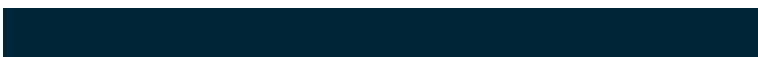
546EF2



6C7478



007AB8



002538

Previews

White Background



This preview shows how the Hex color F28954 looks on a white background.

Color Contrast Check

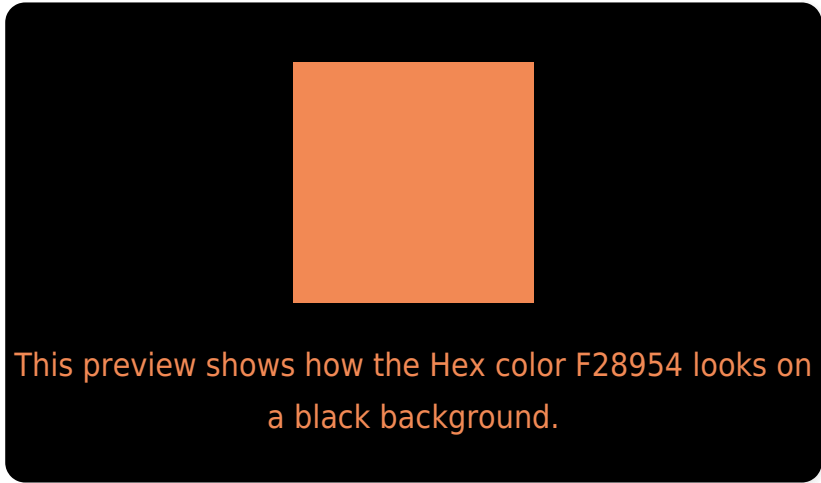
Large Text (above 18pt) WCAG AA × Fail

Any Text WCAG AA × Fail

Large Text (above 18pt) WCAG AAA × Fail

Any Text WCAG AAA × Fail

Black Background



Color Contrast Check

Large Text (above 18pt) WCAG AA ✓ Pass

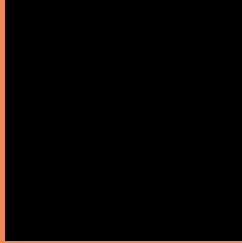
Any Text WCAG AA ✓ Pass

Large Text (above 18pt) WCAG AAA ✓ Pass

Any Text WCAG AAA ✓ Pass

If you want to check with other color combinations, try the [Color Contrast Checker](#).

Hex F28954 Background



This preview shows how black text looks on a background with the Hex color F28954.



This preview shows how white text looks on a background with the Hex color F28954.

Color Blindness Simulation

Color vision deficiency is a very complex topic, and I could not describe the different causes any better than Wikipedia does, so if you want to learn more, you should check out their [article about color blindness](#).


Dichromacy



Original Color
F28954

Protanopia
B5A55E

Deuteranopia
CC9D4F



Tritanopia
F5828C

Trichromacy



Original Color
F28954



Protanomaly
CB9B5A



Deuteranomaly
DA9651

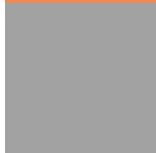


Tritanomaly
F48578

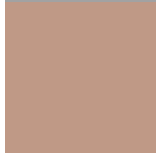
Monochromacy



Original Color
F28954



Achromatopsia
A2A2A2



Achromatomaly
BF9986

CSS Examples

Text

The CSS property to change the color of the text to Hex F28954 is called "color". The color property can be set on classes, ids or directly on the HTML element.

This example shows how text in the color #F28954 looks like.

```
.text, #text, p{  
    color:#F28954  
}
```

If you want to add a text shadow in that color use the text-shadow property, you can generate a text shadow directly with our [CSS Text Shadow Generator](#).

Here you see how black text with a 4 pixel #F28954 colored shadow looks like.

```
.shadow{ text-shadow: 4px 4px 2px #F28954
}
```

Border

The CSS property to change the border of an element to Hex F28954 is called "border". The border property can be set on classes, ids or directly on the HTML element.

This example shows the color as border, it can be applied via the CSS property "border" or "border-color".

```
.border, #border, table{ border:4px solid
#F28954 }
```

If only the border color should be changed use the property `border-color`.

```
.border{ border-color:#F28954 }
```

If you want to add a box shadow in that color use:

Here you see how a box with a 4 pixel #F28954 colored shadow looks like.

```
.boxshadow{ -moz-box-shadow:4px 4px 4px  
4px #F28954; -webkit-box-shadow:4px 4px  
4px 4px #F28954; box-shadow:4px 4px 4px  
4px #F28954 }
```

Background

The CSS property to change the background color of an element to Hex F28954 is called "background". The background property can be set on classes, ids or directly on the HTML element.

```
.background, #background, body{  
background:#F28954 }
```

If only the background color should be changed can be used:

```
.background{ background-color:#F28954 }
```

This example shows the color as background, it is applied via the CSS property "background".

To optimize and compress your CSS code, you can use our [online CSS compressor and optimizer](#) based on csstidy. If you want to create a linear or radial gradient as background or border, check our [CSS Gradient Generator](#).

Hey! You found this booklet interesting? Support Converting Colors with the new Membership Option!

The pro membership hides all ads, plus gives you double the colors in the color bucket, and more awesome pro features!

[Learn more, Memberships starting at \\$2.50/m!](#)

**Follow me
on Twitter!**

@ConvertingColor