

Converting Colors

Hex(F28B6F)

Have a look what the booklet for
Hex(F28B6F) contains.

Hex(F28B6F)	3
<i>Conversions</i>	4
<i>Details</i>	6
<i>Harmonies</i>	11
<i>Previews</i>	23
<i>Color Blindness Simulation</i>	26
<i>CSS Examples</i>	29

Color

Hex(F28B6F)

Conversions

Conversions Part 1

Format	Color
Hex	F28B6F
RGB	242, 139, 111
RGB Percent	95%, 55%, 44%
CMY	0.0510, 0.4549, 0.5647
CMYK	0.00, 0.43, 0.54, 0.05
HSL	13°, 83%, 69%
HSV	13°, 54%, 95%
XYZ	48.7198, 38.4902, 19.9005
YIQ	166.6050, 70.3760, 13.1280

Conversions

Conversions Part 2

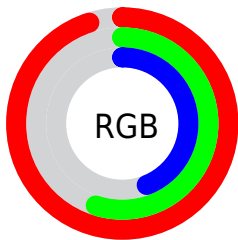
Format	Color
R_{YB}	242, 147, 111
Decimal	15895407
CIE _{Lab}	68.38, 36.44, 31.98
CIE _{LCh}	68, 48.488, 41.270
Yxy	38.4902, 0.4549, 0.3594
Android (android.graphics.Color)	4294085487 (0xFFFF28B6F)
YUV	166.6050, -27.4133, 66.1214
Hunter-Lab	62.0405, 31.6036, 24.4101

Details

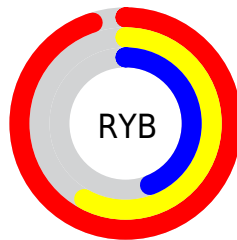
The Hex color **F28B6F** is a light color, and the websafe version is hex **FF9966**. A complement of this color would be **6FD6F2**, and the grayscale version is **A7A7A7**.

A 20% lighter version of the original color is **FFC2A3**, and **B6573F** is the 20% darker color. If you saturate the color by 10%, you get **F27857**, and if you desaturate by 10%, it is **F29E87**.

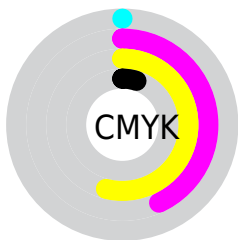
Distribution



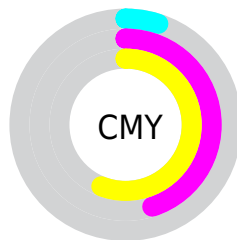
- Red (95%)
- Green (55%)
- Blue (44%)



- Red (95%)
- Yellow (58%)
- Blue (44%)



- Cyan (0%)
- Magenta (43%)
- Yellow (54%)
- Black (5%)



- Cyan (5%)
- Magenta (45%)
- Yellow (56%)

Brightness & Saturation Gradients

These gradients show how the Hex color F28B6F changes by changing the brightness by 10 percent. The first figure shows a shift by +10% for each color and the second figure -10%.

Similar to the brightness gradients but the following saturation gradients show a change of the Hex color F28B6F by changing the saturation by 10% instead.

 F28B6F

 F28B6F

FFFFFF

 D47156

 FFC2A3

 B6573F

 FFDEBE

 983E28

 FFFBDA

 7B2513

 FFFFF7

 5F0800

 430000

 2A0001

 000000

 F28B6F

 F28B6F

 F27857

 F29E87

 F2653F

 F2B19F

 F25226

 F2C4B8

 F23F0E

 F2D7D0

 F23400

 F2EAE8

 F2FDFF

 F2FFFF

Harmonies

Analogous

The Analogous color harmony consists of three colors that are next to each other on the color wheel.



F98298



F28B6F



D89B53

Triad

The Triadic color harmony groups three colors that are evenly spaced from another and form a triangle on the color wheel.



F28B6F



3FBB89



7CA6FD

Complementary

The Complementary color scheme is a pair of colors which are on the opposite of each other on the color wheel.



F28B6F



6FD6F2

Split Complementary

Split-complementary colors differ from the complementary color scheme. The scheme consists of three colors, the original color and two neighbors of the complement color.



00B3F9



F28B6F



00BDB6

Square

The Square scheme is like the rectangle color scheme, but the four colors are evenly spaced on the color wheel.



F28B6F



81B562



00BBDF



C095E9

Rectangle

The Rectangle color scheme consists of four colors that form a rectangle on the color wheel.



F28B6F



BFA54C



00BBDF



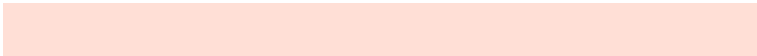
5DABFE

Sweetspot

The Sweet Spot groups the original color and five complimentary colors.



F28B6F



FFDFD6



F26FD8



806C67



000000



808080

Same Dimension

The Same Dimension uses a secret algorithm to generate beautiful new colors.



F28B6F



FF7D59



F2CB6F



786E6C



B82700



380C00

Inverse Universe

The Inverse Universe completely reimagines the original color for something new.



6FD6F2



59DCFF



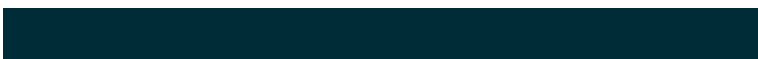
6F96F2



6C7578



0090B8



002C38

Previews

White Background



This preview shows how the Hex color F28B6F looks on a white background.

Color Contrast Check

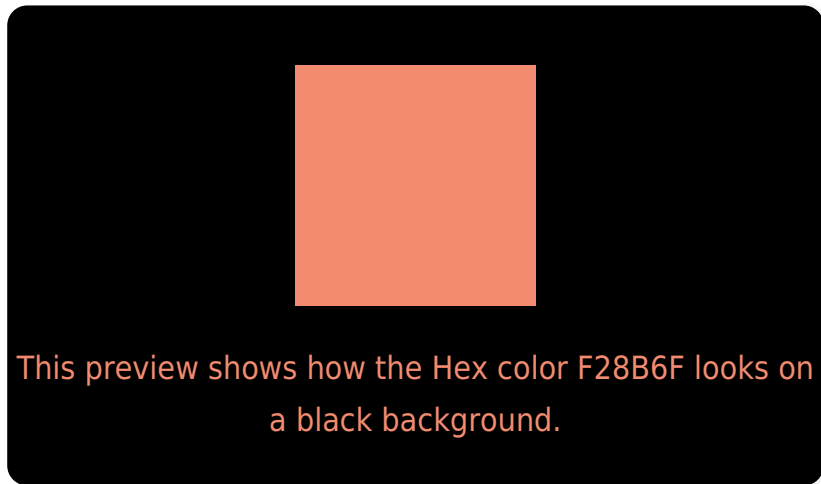
Large Text (above 18pt) WCAG AA × Fail

Any Text WCAG AA × Fail

Large Text (above 18pt) WCAG AAA × Fail

Any Text WCAG AAA × Fail

Black Background



Color Contrast Check

Large Text (above 18pt) WCAG AA ✓ Pass

Any Text WCAG AA ✓ Pass

Large Text (above 18pt) WCAG AAA ✓ Pass

Any Text WCAG AAA ✓ Pass

If you want to check with other color combinations, try the [Color Contrast Checker](#).

Hex F28B6F Background



This preview shows how black text looks on a background with the Hex color F28B6F.

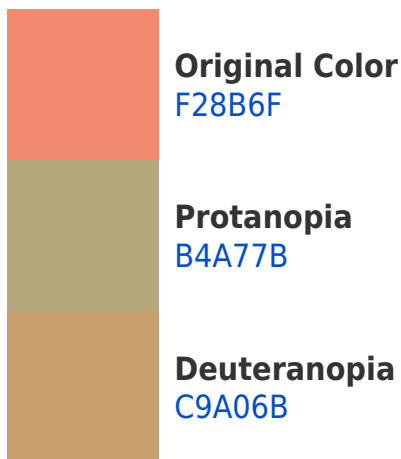


This preview shows how white text looks on a background with the Hex color F28B6F.

Color Blindness Simulation

Color vision deficiency is a very complex topic, and I could not describe the different causes any better than Wikipedia does, so if you want to learn more, you should check out their [article about color blindness](#).

Dichromacy



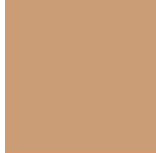


Tritanopia
F48690

Trichromacy



Original Color
F28B6F



Protanomaly
CB9D77



Deuteranomaly
D8986C

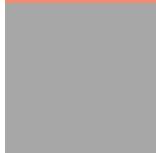


Tritanomaly
F38884

Monochromacy



Original Color
F28B6F



Achromatopsia
A7A7A7



Achromatomaly
C29D93

CSS Examples

Text

The CSS property to change the color of the text to Hex F28B6F is called "color". The color property can be set on classes, ids or directly on the HTML element.

This example shows how text in the color #F28B6F looks like.

```
.text, #text, p{  
    color:#F28B6F  
}
```

If you want to add a text shadow in that color use the text-shadow property, you can generate a text shadow directly with our [CSS Text Shadow Generator](#).

Here you see how black text with a 4 pixel #F28B6F colored shadow looks like.

```
.shadow{ text-shadow: 4px 4px 2px #F28B6F
}
```

Border

The CSS property to change the border of an element to Hex F28B6F is called "border". The border property can be set on classes, ids or directly on the HTML element.

This example shows the color as border, it can be applied via the CSS property "border" or "border-color".

```
.border, #border, table{ border:4px solid
#F28B6F }
```

If only the border color should be changed use the property `border-color`.

```
.border{ border-color:#F28B6F }
```

If you want to add a box shadow in that color use:

Here you see how a box with a 4 pixel #F28B6F colored shadow looks like.

```
.boxshadow{ -moz-box-shadow:4px 4px 4px  
4px #F28B6F; -webkit-box-shadow:4px 4px  
4px 4px #F28B6F; box-shadow:4px 4px 4px  
4px #F28B6F }
```

Background

The CSS property to change the background color of an element to Hex F28B6F is called "background". The background property can be set on classes, ids or directly on the HTML element.

```
.background, #background, body{  
background:#F28B6F }
```

If only the background color should be changed can be used:

```
.background{ background-color:#F28B6F }
```

This example shows the color as background, it is applied via the CSS property "background".

To optimize and compress your CSS code, you can use our [online CSS compressor and optimizer](#) based on csstidy. If you want to create a linear or radial gradient as background or border, check our [CSS Gradient Generator](#).

Hey! You found this booklet interesting? Support Converting Colors with the new Membership Option!

The pro membership hides all ads, plus gives you double the colors in the color bucket, and more awesome pro features!

[Learn more, Memberships starting at \\$2.50/m!](#)

**Follow me
on Twitter!**

@ConvertingColor