

# Converting Colors

Hex(F28DA4)

Have a look what the booklet for  
Hex(F28DA4) contains.

<b>Hex(F28DA4)</b> .....	3
<i><b>Conversions</b></i> .....	4
<i><b>Details</b></i> .....	6
<i><b>Harmonies</b></i> .....	11
<i><b>Previews</b></i> .....	23
<i><b>Color Blindness Simulation</b></i> .....	26
<i><b>CSS Examples</b></i> .....	29

# **Color**

**Hex(F28DA4)**

# Conversions

## Conversions Part 1

Format	Color
Hex	F28DA4
RGB	242, 141, 164
RGB Percent	95%, 55%, 64%
CMY	0.0510, 0.4471, 0.3569
CMYK	0.00, 0.42, 0.32, 0.05
HSL	346°, 80%, 75%
HSV	346°, 42%, 95%
XYZ	52.8437, 40.6073, 40.1748
YIQ	173.8210, 52.8130, 28.5650

# Conversions

## Conversions Part 2

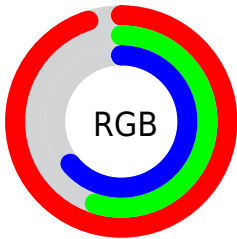
<b>Format</b>	<b>Color</b>
R <sub>Y</sub> B	242, 141, 164
Decimal	15895972
CIE Lab	69.90, 40.88, 4.66
CIE LCh	70, 41.144, 6.497
Yxy	40.6073, 0.3955, 0.3039
Android (android.graphics.Color)	4294086052 (0xFFFF28DA4)
YUV	173.8210, -4.8418, 59.7930
Hunter-Lab	63.7239, 36.5061, 7.2273

# Details

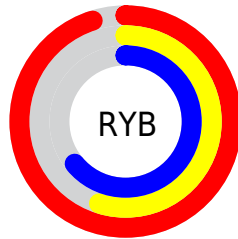
The Hex color **F28DA4** is a light color, and the websafe version is hex **FF9999**. A complement of this color would be **8DF2DB**, and the grayscale version is **AEAEAE**.

A 20% lighter version of the original color is **FFC4DB**, and **B75870** is the 20% darker color. If you saturate the color by 10%, you get **F27591**, and if you desaturate by 10%, it is **F2A5B7**.

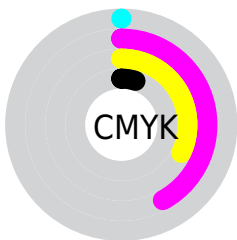
# Distribution



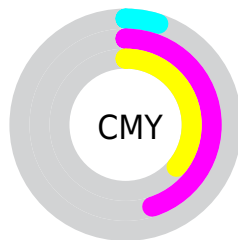
- Red (95%)
- Green (55%)
- Blue (64%)



- Red (95%)
- Yellow (55%)
- Blue (64%)



- Cyan (0%)
- Magenta (42%)
- Yellow (32%)
- Black (5%)



- Cyan (5%)
- Magenta (45%)
- Yellow (36%)

# Brightness & Saturation Gradients

These gradients show how the Hex color F28DA4 changes by changing the brightness by 10 percent. The first figure shows a shift by +10% for each color and the second figure -10%.

Similar to the brightness gradients but the following saturation gradients show a change of the Hex color F28DA4 by changing the saturation by 10% instead.



 F28DA4

 F28DA4

FFFFFF

 D4728A

 FFC4DB

 B75870

 FFE1F7

 9B3F58

FFFEFF

 7F2541

 64052B

 490017

 320002

 000000

 F28DA4

 F28DA4

 F27591

 F2A5B7

 F25D7F

 F2BDC9

 F2446C

 F2D6DC

 F22C59

 F2EEEE

 F21447

 F2FFFF

 F20037

# Harmonies

## Analogous

The Analogous color harmony consists of three colors that are next to each other on the color wheel.



E092C9



F28DA4



EF9280

# Triad

The Triadic color harmony groups three colors that are evenly spaced from another and form a triangle on the color wheel.



F28DA4



93B66D



32B7EF

# Complementary

The Complementary color scheme is a pair of colors which are on the opposite of each other on the color wheel.



F28DA4



8DF2DB

# Split Complementary

Split-complementary colors differ from the complementary color scheme. The scheme consists of three colors, the original color and two neighbors of the complement color.



00BDD6



F28DA4



64BC8C

# Square

The Square scheme is like the rectangle color scheme, but the four colors are evenly spaced on the color wheel.



F28DA4



BBAB5F



20BFB2



80ACF5

# Rectangle

The Rectangle color scheme consists of four colors that form a rectangle on the color wheel.



F28DA4



E39A6E



20BFB2



00B9E8



# Sweetspot

The Sweet Spot groups the original color and five complimentary colors.



F28DA4



FFDEE5



DA8DF2



806B70



000000



808080



# Same Dimension

The Same Dimension uses a secret algorithm to generate beautiful new colors.



F28DA4



FF809D



F2A88D



786C6F



B8002A



38000D



# Inverse Universe

The Inverse Universe completely reimagines the original color for something new.



F28DA4



FF809D



8DD7F2



786C6F



B8002A



38000D



# Previews

## White Background



This preview shows how the Hex color F28DA4 looks on a white background.

## Color Contrast Check

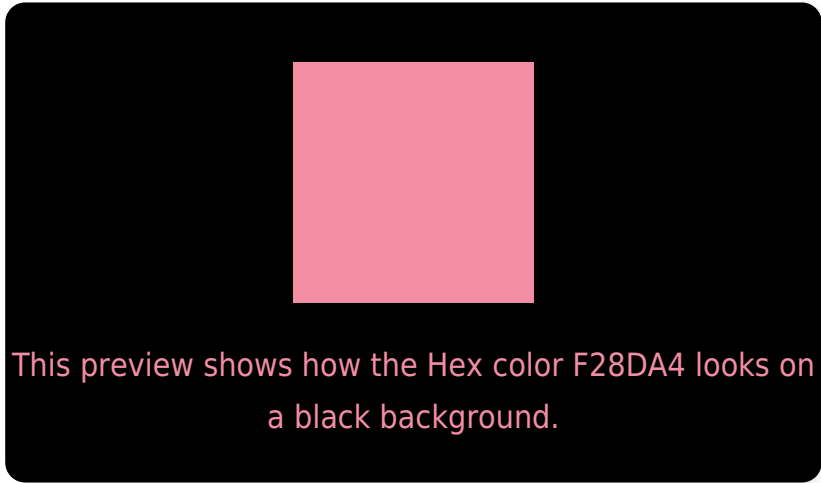
Large Text (above 18pt) WCAG AA × Fail

Any Text WCAG AA × Fail

Large Text (above 18pt) WCAG AAA × Fail

Any Text WCAG AAA × Fail

# Black Background



## Color Contrast Check

Large Text (above 18pt) WCAG AA ✓ Pass

Any Text WCAG AA ✓ Pass

Large Text (above 18pt) WCAG AAA ✓ Pass

Any Text WCAG AAA ✓ Pass

If you want to check with other color combinations, try the [Color Contrast Checker](#).



## Hex F28DA4 Background



This preview shows how black text looks on a background with the Hex color F28DA4.

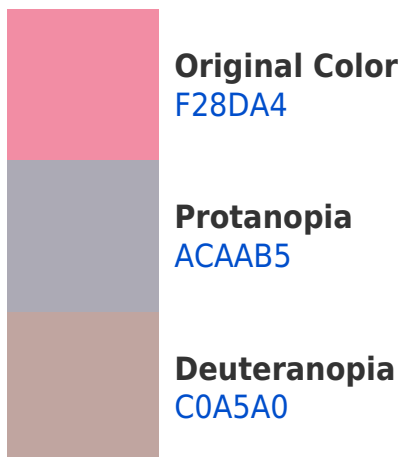


This preview shows how white text looks on a background with the Hex color F28DA4.

# Color Blindness Simulation

Color vision deficiency is a very complex topic, and I could not describe the different causes any better than Wikipedia does, so if you want to learn more, you should check out their [article about color blindness](#).

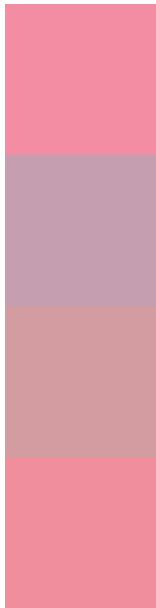
## Dichromacy





**Tritanopia**  
F18F99

# Trichromacy



**Original Color**  
F28DA4

**Protanomaly**  
C59FAF

**Deuteranomaly**  
D29CA1

**Tritanomaly**  
F18E9D

# Monochromacy



**Original Color**  
F28DA4

**Achromatopsia**  
AEAEAE

**Achromatomaly**  
C7A2AA

# CSS Examples

## Text

The CSS property to change the color of the text to Hex F28DA4 is called "color". The color property can be set on classes, ids or directly on the HTML element.

This example shows how text in the color #F28DA4 looks like.

```
.text, #text, p{  
    color:#F28DA4  
}
```

If you want to add a text shadow in that color use the text-shadow property, you can generate a text shadow directly with our [CSS Text Shadow Generator](#).

Here you see how black text with a 4 pixel #F28DA4 colored shadow looks like.

```
.shadow{ text-shadow: 4px 4px 2px #F28DA4
}
```

## Border

The CSS property to change the border of an element to Hex F28DA4 is called "border". The border property can be set on classes, ids or directly on the HTML element.

This example shows the color as border, it can be applied via the CSS property "border" or "border-color".

```
.border, #border, table{ border:4px solid
#F28DA4 }
```

If only the border color should be changed use the property `border-color`.

```
.border{ border-color:#F28DA4 }
```

If you want to add a box shadow in that color use:

Here you see how a box with a 4 pixel #F28DA4 colored shadow looks like.

```
.boxshadow{ -moz-box-shadow:4px 4px 4px  
4px #F28DA4; -webkit-box-shadow:4px 4px  
4px 4px #F28DA4; box-shadow:4px 4px 4px  
4px #F28DA4 }
```

# Background

The CSS property to change the background color of an element to Hex F28DA4 is called "background". The background property can be set on classes, ids or directly on the HTML element.

```
.background, #background, body{  
background:#F28DA4 }
```

If only the background color should be changed can be used:

```
.background{ background-color:#F28DA4 }
```

This example shows the color as background, it is applied via the CSS property "background".

To optimize and compress your CSS code, you can use our [online CSS compressor and optimizer](#) based on csstidy. If you want to create a linear or radial gradient as background or border, check our [CSS Gradient Generator](#).



Hey! You found this booklet interesting? Support Converting Colors with the new Membership Option!

The pro membership hides all ads, plus gives you double the colors in the color bucket, and more awesome pro features!

**[Learn more, Memberships starting at \\$2.50/m!](#)**

**Follow me  
on Twitter!**

@ConvertingColor