

Converting Colors

Hex(F28E73)

Have a look what the booklet for
Hex(F28E73) contains.

Hex(F28E73)	3
<i>Conversions</i>	4
<i>Details</i>	6
<i>Harmonies</i>	11
<i>Previews</i>	23
<i>Color Blindness Simulation</i>	26
<i>CSS Examples</i>	29

Color

Hex(F28E73)

Conversions

Conversions Part 1

Format	Color
Hex	F28E73
RGB	242, 142, 115
RGB Percent	95%, 56%, 45%
CMY	0.0510, 0.4431, 0.5490
CMYK	0.00, 0.41, 0.52, 0.05
HSL	13°, 83%, 70%
HSV	13°, 52%, 95%
XYZ	49.3855, 39.4611, 21.2335
YIQ	168.8220, 68.2670, 12.8030

Conversions

Conversions Part 2

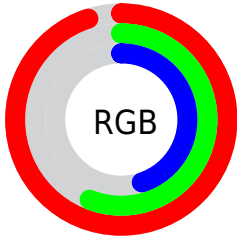
Format	Color
R _Y B	242, 149, 115
Decimal	15896179
CIE Lab	69.08, 35.23, 30.72
CIE LCh	69, 46.737, 41.088
Yxy	39.4611, 0.4486, 0.3585
Android (android.graphics.Color)	4294086259 (0xFFFF28E73)
YUV	168.8220, -26.5342, 64.1771
Hunter-Lab	62.8180, 30.3992, 23.9317

Details

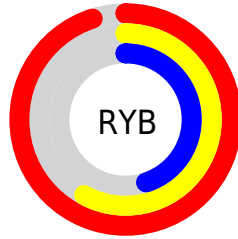
The Hex color **F28E73** is a light color, and the websafe version is hex **FF9966**. A complement of this color would be **73D7F2**, and the grayscale version is **A9A9A9**.

A 20% lighter version of the original color is **FFC5A7**, and **B65A42** is the 20% darker color. If you saturate the color by 10%, you get **F27B5B**, and if you desaturate by 10%, it is **F2A18B**.

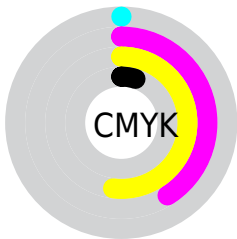
Distribution



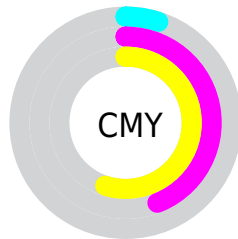
- Red (95%)
- Green (56%)
- Blue (45%)



- Red (95%)
- Yellow (58%)
- Blue (45%)



- Cyan (0%)
- Magenta (41%)
- Yellow (52%)
- Black (5%)



- Cyan (5%)
- Magenta (44%)
- Yellow (55%)

Brightness & Saturation Gradients

These gradients show how the Hex color F28E73 changes by changing the brightness by 10 percent. The first figure shows a shift by +10% for each color and the second figure -10%.

Similar to the brightness gradients but the following saturation gradients show a change of the Hex color F28E73 by changing the saturation by 10% instead.

 F28E73

 F28E73

FFFFFF

 D4745A

 FFC5A7

 B65A42

 FFE1C3

 99412C

 FFFEDF

 7C2816

 FFFFFB

 600E00

 440000

 2C0001

 000000

 F28E73

 F28E73

 F27B5B

 F2A18B

 F26843

 F2B4A3

 F2552A

 F2C7BC

 F24212

 F2DAD4

 F23300

 F2EDEC

 F2FFFF

Harmonies

Analogous

The Analogous color harmony consists of three colors that are next to each other on the color wheel.



F9869A



F28E73



D99D58

Triad

The Triadic color harmony groups three colors that are evenly spaced from another and form a triangle on the color wheel.



F28E73



48BD8C



80A8FC

Complementary

The Complementary color scheme is a pair of colors which are on the opposite of each other on the color wheel.



F28E73



73D7F2

Split Complementary

Split-complementary colors differ from the complementary color scheme. The scheme consists of three colors, the original color and two neighbors of the complement color.



00B5F8



F28E73



00BFB7

Square

The Square scheme is like the rectangle color scheme, but the four colors are evenly spaced on the color wheel.



F28E73



85B667



00BCDF



C197E9

Rectangle

The Rectangle color scheme consists of four colors that form a rectangle on the color wheel.



F28E73



C1A752



00BCDF



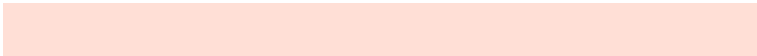
64ACFD

Sweetspot

The Sweet Spot groups the original color and five complimentary colors.



F28E73



FFDFD6



F273D9



806C67



000000



808080

Same Dimension

The Same Dimension uses a secret algorithm to generate beautiful new colors.



F28E73



FF815E



F2CC73



786E6C



B82700



380C00

Inverse Universe

The Inverse Universe completely reimagines the original color for something new.



73D7F2



5EDDFE



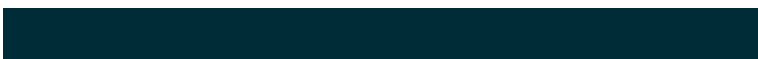
7399F2



6C7578



0091B8



002C38

Previews

White Background



This preview shows how the Hex color F28E73 looks on a white background.

Color Contrast Check

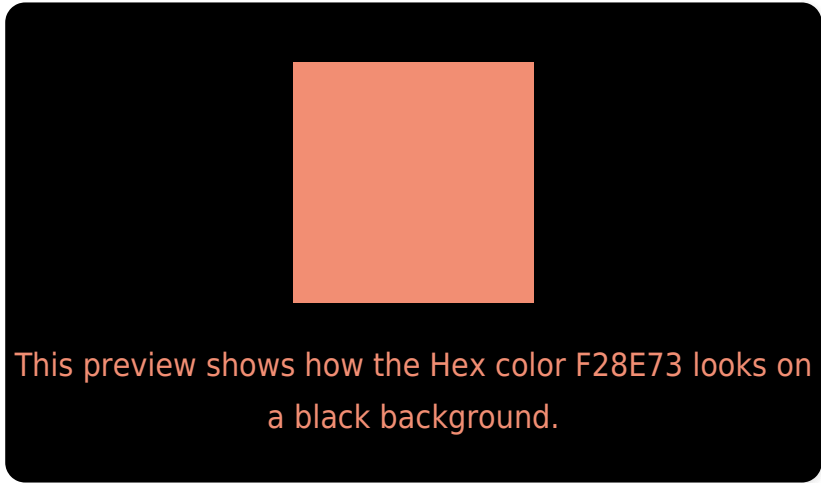
Large Text (above 18pt) WCAG AA × Fail

Any Text WCAG AA × Fail

Large Text (above 18pt) WCAG AAA × Fail

Any Text WCAG AAA × Fail

Black Background



Color Contrast Check

Large Text (above 18pt) WCAG AA ✓ Pass

Any Text WCAG AA ✓ Pass

Large Text (above 18pt) WCAG AAA ✓ Pass

Any Text WCAG AAA ✓ Pass

If you want to check with other color combinations, try the [Color Contrast Checker](#).

Hex F28E73 Background



This preview shows how black text looks on a background with the Hex color F28E73.

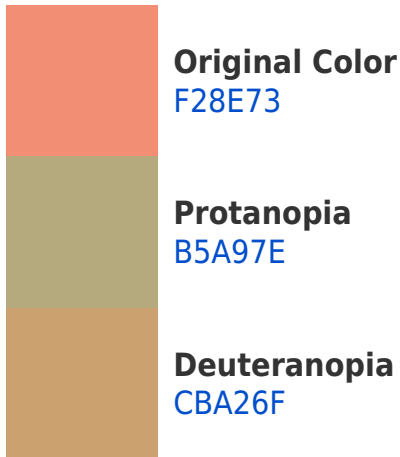


This preview shows how white text looks on a background with the Hex color F28E73.

Color Blindness Simulation

Color vision deficiency is a very complex topic, and I could not describe the different causes any better than Wikipedia does, so if you want to learn more, you should check out their [article about color blindness](#).

Dichromacy



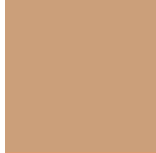


Tritanopia
F48994

Trichromacy



Original Color
F28E73



Protanomaly
CB9F7A



Deuteranomaly
D99B70

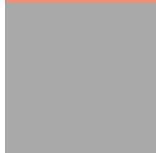


Tritanomaly
F38B88

Monochromacy



Original Color
F28E73



Achromatopsia
A9A9A9



Achromatomaly
C49F95

CSS Examples

Text

The CSS property to change the color of the text to Hex F28E73 is called "color". The color property can be set on classes, ids or directly on the HTML element.

This example shows how text in the color #F28E73 looks like.

```
.text, #text, p{  
    color:#F28E73  
}
```

If you want to add a text shadow in that color use the text-shadow property, you can generate a text shadow directly with our [CSS Text Shadow Generator](#).

Here you see how black text with a 4 pixel #F28E73 colored shadow looks like.

```
.shadow{ text-shadow: 4px 4px 2px #F28E73
}
```

Border

The CSS property to change the border of an element to Hex F28E73 is called "border". The border property can be set on classes, ids or directly on the HTML element.

This example shows the color as border, it can be applied via the CSS property "border" or "border-color".

```
.border, #border, table{ border:4px solid
#F28E73 }
```

If only the border color should be changed use the property `border-color`.

```
.border{ border-color:#F28E73 }
```

If you want to add a box shadow in that color use:

Here you see how a box with a 4 pixel #F28E73 colored shadow looks like.

```
.boxshadow{ -moz-box-shadow:4px 4px 4px  
4px #F28E73; -webkit-box-shadow:4px 4px  
4px 4px #F28E73; box-shadow:4px 4px 4px  
4px #F28E73 }
```

Background

The CSS property to change the background color of an element to Hex F28E73 is called "background". The background property can be set on classes, ids or directly on the HTML element.

```
.background, #background, body{  
background:#F28E73 }
```

If only the background color should be changed can be used:

```
.background{ background-color:#F28E73 }
```

This example shows the color as background, it is applied via the CSS property "background".

To optimize and compress your CSS code, you can use our [online CSS compressor and optimizer](#) based on csstidy. If you want to create a linear or radial gradient as background or border, check our [CSS Gradient Generator](#).

Hey! You found this booklet interesting? Support Converting Colors with the new Membership Option!

The pro membership hides all ads, plus gives you double the colors in the color bucket, and more awesome pro features!

[Learn more, Memberships starting at \\$2.50/m!](#)

**Follow me
on Twitter!**

@ConvertingColor