

Converting Colors

Hex(F2BDE6)

Have a look what the booklet for
Hex(F2BDE6) contains.

Hex(F2BDE6)	3
<i>Conversions</i>	4
<i>Details</i>	6
<i>Harmonies</i>	11
<i>Previews</i>	23
<i>Color Blindness Simulation</i>	26
<i>CSS Examples</i>	29

Color

Hex(F2BDE6)

Conversions

Conversions Part 1

Format	Color
Hex	F2BDE6
RGB	242, 189, 230
RGB Percent	95%, 74%, 90%
CMY	0.0510, 0.2588, 0.0980
CMYK	0.00, 0.22, 0.05, 0.05
HSL	314°, 67%, 85%
HSV	314°, 22%, 95%
XYZ	69.0985, 60.9856, 82.9924
YIQ	209.5210, 18.4270, 23.9870

Conversions

Conversions Part 2

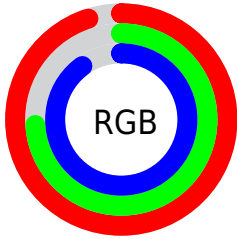
Format	Color
R _Y B	242, 189, 230
Decimal	15908326
CIE Lab	82.37, 25.57, -13.09
CIE LCh	82, 28.728, 332.897
Yxy	60.9856, 0.3243, 0.2862
Android (android.graphics.Color)	4294098406 (0xFFF2BDE6)
YUV	209.5210, 10.0961, 28.4841
Hunter-Lab	78.0933, 21.2771, -8.3442

Details

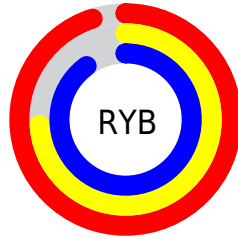
The Hex color **F2BDE6** is a light color, and the websafe version is hex **FFCCFF**. A complement of this color would be **BDF2C9**, and the grayscale version is **D1D1D1**.

A 20% lighter version of the original color is **FFF6FF**, and **B987AE** is the 20% darker color. If you saturate the color by 10%, you get **F2A5E1**, and if you desaturate by 10%, it is **F2D5EB**.

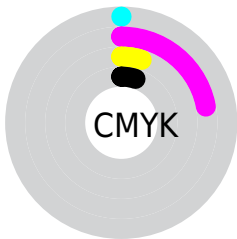
Distribution



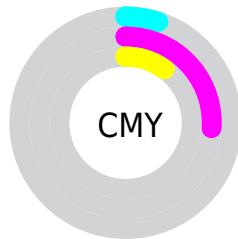
- Red (95%)
- Green (74%)
- Blue (90%)



- Red (95%)
- Yellow (74%)
- Blue (90%)



- Cyan (0%)
- Magenta (22%)
- Yellow (5%)
- Black (5%)



- Cyan (5%)
- Magenta (26%)
- Yellow (10%)

Brightness & Saturation Gradients

These gradients show how the Hex color F2BDE6 changes by changing the brightness by 10 percent. The first figure shows a shift by +10% for each color and the second figure -10%.

Similar to the brightness gradients but the following saturation gradients show a change of the Hex color F2BDE6 by changing the saturation by 10% instead.

 F2BDE6

FFFFFF

 FFF6FF

 F2BDE6

 D5A2CA

 B987AE

 9E6E94

 84557A

 6A3D61

 512649

 390F33

 25001E

 000000

 F2BDE6

 F2BDE6

 F2A5E1

 F2D5EB

 F28DDB

 F2EDF1

 F274D6

 F2FFF6

 F25CD0

 F2FFFC

 F244CB

 F2FFFF

 F22CC5

 F214C0

 F200BB

Harmonies

Analogous

The Analogous color harmony consists of three colors that are next to each other on the color wheel.



D5C5FA



F2BDE6



FFB9CB

Triad

The Triadic color harmony groups three colors that are evenly spaced from another and form a triangle on the color wheel.



F2BDE6



DECC97



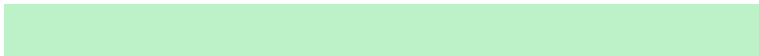
7EDBE9

Complementary

The Complementary color scheme is a pair of colors which are on the opposite of each other on the color wheel.



F2BDE6



BDF2C9

Split Complementary

Split-complementary colors differ from the complementary color scheme. The scheme consists of three colors, the original color and two neighbors of the complement color.



88DCCF



F2BDE6



C1D49F

Square

The Square scheme is like the rectangle color scheme, but the four colors are evenly spaced on the color wheel.



F2BDE6



F6C39E



A2DAB4



8DD6FC

Rectangle

The Rectangle color scheme consists of four colors that form a rectangle on the color wheel.



F2BDE6



FFBAB9



A2DAB4



7EDCE1

Sweetspot

The Sweet Spot groups the original color and five complimentary colors.



F2BDE6



FFEDFB



C8BDF2



80757D



000000



808080

Same Dimension

The Same Dimension uses a secret algorithm to generate beautiful new colors.



F2BDE6



FFBDF0



F2BDCC



786C75



B8008E



38002B

Inverse Universe

The Inverse Universe completely reimagines the original color for something new.



F2BDE6



FFBDF0



BDF2E3



786C75



B8008E



38002B

Previews

White Background



This preview shows how the Hex color F2BDE6 looks on a white background.

Color Contrast Check

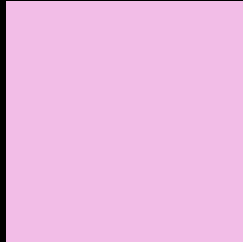
Large Text (above 18pt) WCAG AA × Fail

Any Text WCAG AA × Fail

Large Text (above 18pt) WCAG AAA × Fail

Any Text WCAG AAA × Fail

Black Background



This preview shows how the Hex color F2BDE6 looks on a black background.

Color Contrast Check

Large Text (above 18pt) WCAG AA ✓ Pass

Any Text WCAG AA ✓ Pass

Large Text (above 18pt) WCAG AAA ✓ Pass

Any Text WCAG AAA ✓ Pass

If you want to check with other color combinations, try the [Color Contrast Checker](#).

Hex F2BDE6 Background



This preview shows how black text looks on a background with the Hex color F2BDE6.

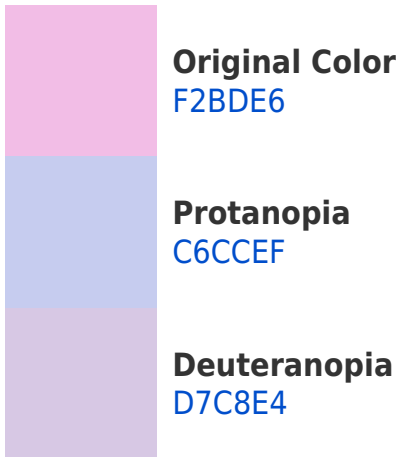


This preview shows how white text looks on a background with the Hex color F2BDE6.

Color Blindness Simulation

Color vision deficiency is a very complex topic, and I could not describe the different causes any better than Wikipedia does, so if you want to learn more, you should check out their [article about color blindness](#).

Dichromacy



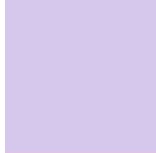


Tritanopia
EFC1D0

Trichromacy



Original Color
F2BDE6



Protanomaly
D6C7EC



Deuteranomaly
E1C4E5

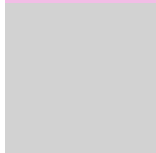


Tritanomaly
F0C0D8

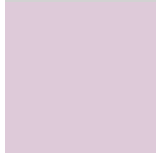
Monochromacy



Original Color
F2BDE6



Achromatopsia
D2D2D2



Achromatomaly
DECAD9

CSS Examples

Text

The CSS property to change the color of the text to Hex F2BDE6 is called "color". The color property can be set on classes, ids or directly on the HTML element.

This example shows how text in the color #F2BDE6 looks like.

```
.text, #text, p{  
    color:#F2BDE6  
}
```

If you want to add a text shadow in that color use the text-shadow property, you can generate a text shadow directly with our [CSS Text Shadow Generator](#).

Here you see how black text with a 4 pixel #F2BDE6 colored shadow looks like.

```
.shadow{ text-shadow: 4px 4px 2px #F2BDE6 }  
}
```

Border

The CSS property to change the border of an element to Hex F2BDE6 is called "border". The border property can be set on classes, ids or directly on the HTML element.

This example shows the color as border, it can be applied via the CSS property "border" or "border-color".

```
.border, #border, table{ border:4px solid #F2BDE6 }  
}
```

If only the border color should be changed use the property `border-color`.

```
.border{ border-color:#F2BDE6 }
```

If you want to add a box shadow in that color use:

Here you see how a box with a 4 pixel #F2BDE6 colored shadow looks like.

```
.boxshadow{ -moz-box-shadow:4px 4px 4px  
4px #F2BDE6; -webkit-box-shadow:4px 4px  
4px 4px #F2BDE6; box-shadow:4px 4px 4px  
4px #F2BDE6 }
```

Background

The CSS property to change the background color of an element to Hex F2BDE6 is called "background". The background property can be set on classes, ids or directly on the HTML element.

```
.background, #background, body{  
background:#F2BDE6 }
```

If only the background color should be changed can be used:

```
.background{ background-color:#F2BDE6 }
```

This example shows the color as background, it is applied via the CSS property "background".

To optimize and compress your CSS code, you can use our [online CSS compressor and optimizer](#) based on csstidy. If you want to create a linear or radial gradient as background or border, check our [CSS Gradient Generator](#).

Hey! You found this booklet interesting? Support Converting Colors with the new Membership Option!

The pro membership hides all ads, plus gives you double the colors in the color bucket, and more awesome pro features!

[Learn more, Memberships starting at \\$2.50/m!](#)

**Follow me
on Twitter!**

@ConvertingColor