

Converting Colors

Hex(F2C4C6)

Have a look what the booklet for
Hex(F2C4C6) contains.

Hex(F2C4C6)	3
<i>Conversions</i>	4
<i>Details</i>	6
<i>Harmonies</i>	11
<i>Previews</i>	23
<i>Color Blindness Simulation</i>	26
<i>CSS Examples</i>	29

Color

Hex(F2C4C6)

Conversions

Conversions Part 1

Format	Color
Hex	F2C4C6
RGB	242, 196, 198
RGB Percent	95%, 77%, 78%
CMY	0.0510, 0.2314, 0.2235
CMYK	0.00, 0.19, 0.18, 0.05
HSL	357°, 64%, 86%
HSV	357°, 19%, 95%
XYZ	66.5509, 62.4343, 61.9695
YIQ	209.9820, 26.7740, 10.3740

Conversions

Conversions Part 2

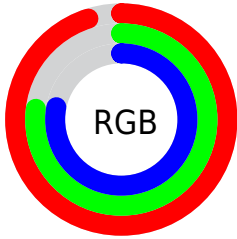
Format	Color
R _Y B	242, 196, 198
Decimal	15910086
CIE Lab	83.14, 16.65, 5.19
CIE LCh	83, 17.439, 17.329
Yxy	62.4343, 0.3485, 0.3270
Android (android.graphics.Color)	4294100166 (0xFFFF2C4C6)
YUV	209.9820, -5.9071, 28.0798
Hunter-Lab	79.0154, 12.0652, 8.8113

Details

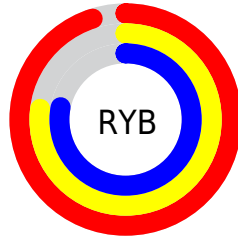
The Hex color **F2C4C6** is a light color, and the websafe version is hex **FFCCCC**. A complement of this color would be **C4F2F0**, and the grayscale version is **D2D2D2**.

A 20% lighter version of the original color is **FFDFFF**, and **B98E90** is the 20% darker color. If you saturate the color by 10%, you get **F2ACAF**, and if you desaturate by 10%, it is **F2DCDD**.

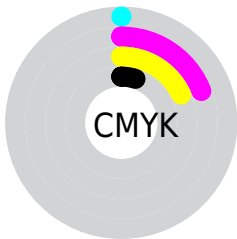
Distribution



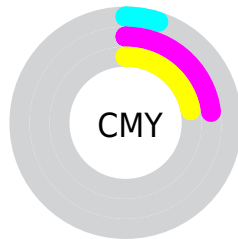
- Red (95%)
- Green (77%)
- Blue (78%)



- Red (95%)
- Yellow (77%)
- Blue (78%)



- Cyan (0%)
- Magenta (19%)
- Yellow (18%)
- Black (5%)



- Cyan (5%)
- Magenta (23%)
- Yellow (22%)

Brightness & Saturation Gradients

These gradients show how the Hex color F2C4C6 changes by changing the brightness by 10 percent. The first figure shows a shift by +10% for each color and the second figure -10%.

Similar to the brightness gradients but the following saturation gradients show a change of the Hex color F2C4C6 by changing the saturation by 10% instead.

 F2C4C6

 F2C4C6

FFFFFF

 D5A9AB

 FFFDFD

 B98E90

 9E7477

 835C5E

 6A4446

 512D30

 39181B

 250000

 000000

 F2C4C6

 F2C4C6

 F2ACAF

 F2DCDD

 F29498

 F2F4F4

 F27B81

 F2FFFF

 F26369

 F24B52

 F2333B

 F21B24

 F2020D

 F2000B

Harmonies

Analogous

The Analogous color harmony consists of three colors that are next to each other on the color wheel.



ECC4D7



F2C4C6



EFC7B8

Triad

The Triadic color harmony groups three colors that are evenly spaced from another and form a triangle on the color wheel.



F2C4C6



BFD6B9



B5D3EF

Complementary

The Complementary color scheme is a pair of colors which are on the opposite of each other on the color wheel.



F2C4C6



C4F2F0

Split Complementary

Split-complementary colors differ from the complementary color scheme. The scheme consists of three colors, the original color and two neighbors of the complement color.



A7D7E7



F2C4C6



AED8C7

Square

The Square scheme is like the rectangle color scheme, but the four colors are evenly spaced on the color wheel.



F2C4C6



D2D1B0



A5D9D8



C9CDEE

Rectangle

The Rectangle color scheme consists of four colors that form a rectangle on the color wheel.



F2C4C6



E8CAB1



A5D9D8



AFD4ED

Sweetspot

The Sweet Spot groups the original color and five complimentary colors.



F2C4C6



FFF0F0



F0C4F2



807777



000000



808080

Same Dimension

The Same Dimension uses a secret algorithm to generate beautiful new colors.



F2C4C6



FFC4C7



F2D9C4



786C6C



B80008



380002

Inverse Universe

The Inverse Universe completely reimagines the original color for something new.



F2C4C6



FFC4C7



C4DDF2



786C6C



B80008



380002

Previews

White Background



This preview shows how the Hex color F2C4C6 looks on a white background.

Color Contrast Check

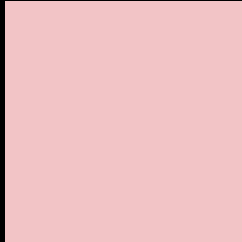
Large Text (above 18pt) WCAG AA × Fail

Any Text WCAG AA × Fail

Large Text (above 18pt) WCAG AAA × Fail

Any Text WCAG AAA × Fail

Black Background



This preview shows how the Hex color F2C4C6 looks on a black background.

Color Contrast Check

Large Text (above 18pt) WCAG AA ✓ Pass

Any Text WCAG AA ✓ Pass

Large Text (above 18pt) WCAG AAA ✓ Pass

Any Text WCAG AAA ✓ Pass

If you want to check with other color combinations, try the [Color Contrast Checker](#).

Hex F2C4C6 Background



This preview shows how black text looks on a background with the Hex color F2C4C6.

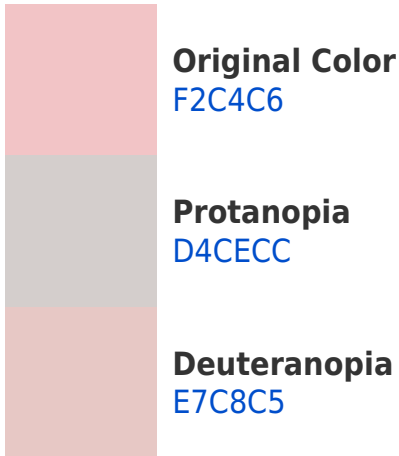


This preview shows how white text looks on a background with the Hex color F2C4C6.

Color Blindness Simulation

Color vision deficiency is a very complex topic, and I could not describe the different causes any better than Wikipedia does, so if you want to learn more, you should check out their [article about color blindness](#).

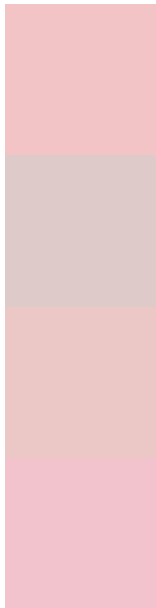
Dichromacy





Tritanopia
F3C2D1

Trichromacy



Original Color
F2C4C6

Protanomaly
DFCACA

Deuteranomaly
EBC7C5

Tritanomaly
F3C3CD

Monochromacy



Original Color
F2C4C6

Achromatopsia
D2D2D2

Achromatomaly
DECDCE

CSS Examples

Text

The CSS property to change the color of the text to Hex F2C4C6 is called "color". The color property can be set on classes, ids or directly on the HTML element.

This example shows how text in the color #F2C4C6 looks like.

```
.text, #text, p{  
    color:#F2C4C6  
}
```

If you want to add a text shadow in that color use the text-shadow property, you can generate a text shadow directly with our [CSS Text Shadow Generator](#).

Here you see how black text with a 4 pixel #F2C4C6 colored shadow looks like.

```
.shadow{ text-shadow: 4px 4px 2px #F2C4C6
}
```

Border

The CSS property to change the border of an element to Hex F2C4C6 is called "border". The border property can be set on classes, ids or directly on the HTML element.

This example shows the color as border, it can be applied via the CSS property "border" or "border-color".

```
.border, #border, table{ border:4px solid
#F2C4C6 }
```

If only the border color should be changed use the property `border-color`.

```
.border{ border-color:#F2C4C6 }
```

If you want to add a box shadow in that color use:

Here you see how a box with a 4 pixel #F2C4C6 colored shadow looks like.

```
.boxshadow{ -moz-box-shadow:4px 4px 4px  
4px #F2C4C6; -webkit-box-shadow:4px 4px  
4px 4px #F2C4C6; box-shadow:4px 4px 4px  
4px #F2C4C6 }
```

Background

The CSS property to change the background color of an element to Hex F2C4C6 is called "background". The background property can be set on classes, ids or directly on the HTML element.

```
.background, #background, body{  
background:#F2C4C6 }
```

If only the background color should be changed can be used:

```
.background{ background-color:#F2C4C6 }
```

This example shows the color as background, it is applied via the CSS property "background".

To optimize and compress your CSS code, you can use our [online CSS compressor and optimizer](#) based on csstidy. If you want to create a linear or radial gradient as background or border, check our [CSS Gradient Generator](#).

Hey! You found this booklet interesting? Support Converting Colors with the new Membership Option!

The pro membership hides all ads, plus gives you double the colors in the color bucket, and more awesome pro features!

[Learn more, Memberships starting at \\$2.50/m!](#)

**Follow me
on Twitter!**

@ConvertingColor