

Converting Colors

Hex(F2C4ED)

Have a look what the booklet for
Hex(F2C4ED) contains.

Hex(F2C4ED)	3
<i>Conversions</i>	4
<i>Details</i>	6
<i>Harmonies</i>	11
<i>Previews</i>	23
<i>Color Blindness Simulation</i>	26
<i>CSS Examples</i>	29

Color

Hex(F2C4ED)

Conversions

Conversions Part 1

Format	Color
Hex	F2C4ED
RGB	242, 196, 237
RGB Percent	95%, 77%, 93%
CMY	0.0510, 0.2314, 0.0706
CMYK	0.00, 0.19, 0.02, 0.05
HSL	307°, 64%, 86%
HSV	307°, 19%, 95%
XYZ	71.6439, 64.4715, 88.7890
YIQ	214.4280, 14.2550, 22.5030

Conversions

Conversions Part 2

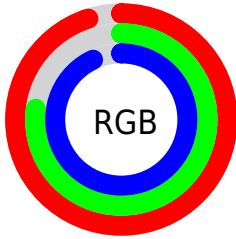
Format	Color
R _Y B	242, 196, 237
Decimal	15910125
CIE _{Lab}	84.21, 23.10, -14.07
CIE _{LCh}	84, 27.048, 328.645
Y _{xy}	64.4715, 0.3186, 0.2867
Android (android.graphics.Color)	4294100205 (0xFFFF2C4ED)
YUV	214.4280, 11.1280, 24.1806
Hunter-Lab	80.2942, 18.7551, -9.3567

Details

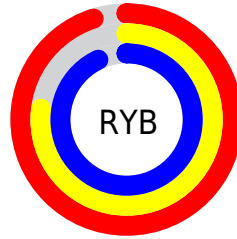
The Hex color **F2C4ED** is a light color, and the websafe version is hex **FFCCFF**. A complement of this color would be **C4F2C9**, and the grayscale version is **D6D6D6**.

A 20% lighter version of the original color is **FFFDFD**, and **BA8EB5** is the 20% darker color. If you saturate the color by 10%, you get **F2ACEA**, and if you desaturate by 10%, it is **F2DCF0**.

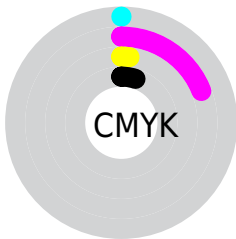
Distribution



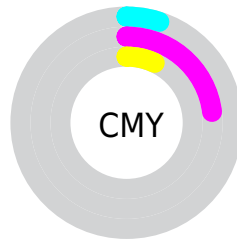
- Red (95%)
- Green (77%)
- Blue (93%)



- Red (95%)
- Yellow (77%)
- Blue (93%)



- Cyan (0%)
- Magenta (19%)
- Yellow (2%)
- Black (5%)



- Cyan (5%)
- Magenta (23%)
- Yellow (7%)

Brightness & Saturation Gradients

These gradients show how the Hex color F2C4ED changes by changing the brightness by 10 percent. The first figure shows a shift by +10% for each color and the second figure -10%.

Similar to the brightness gradients but the following saturation gradients show a change of the Hex color F2C4ED by changing the saturation by 10% instead.

 F2C4ED

FFFFFF

 FFFDFD

 F2C4ED

 D5A9D1

 BA8EB5

 9E749A

 845B80

 6A4367

 522C4F

 3A1638

 240023

 00000A

 F2C4ED

 F2C4ED

 F2ACEA

 F2DCF0

 F294E8

 F2F4F2

 F27BE5

 F2FFF5

 F263E2

 F2FFF8

 F24BE0

 F2FFFA

 F233DD

 F2FFFD

 F21BDB

 F2FFFF

 F202D8

 F200D8

Harmonies

Analogous

The Analogous color harmony consists of three colors that are next to each other on the color wheel.



D5CCFF



F2C4ED



FFC0D4

Triad

The Triadic color harmony groups three colors that are evenly spaced from another and form a triangle on the color wheel.



F2C4ED



E6D09F



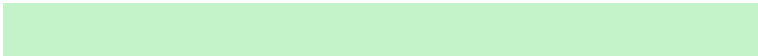
89E0EA

Complementary

The Complementary color scheme is a pair of colors which are on the opposite of each other on the color wheel.



F2C4ED



C4F2C9

Split Complementary

Split-complementary colors differ from the complementary color scheme. The scheme consists of three colors, the original color and two neighbors of the complement color.



95E0D0



F2C4ED



CBD8A5

Square

The Square scheme is like the rectangle color scheme, but the four colors are evenly spaced on the color wheel.



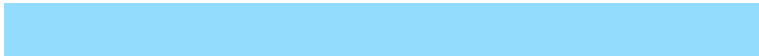
F2C4ED



FBC8A7



AEDEB7



94DCFD

Rectangle

The Rectangle color scheme consists of four colors that form a rectangle on the color wheel.



F2C4ED



FFC0C3



AEDEB7



8BE0E1

Sweetspot

The Sweet Spot groups the original color and five complimentary colors.



F2C4ED



FFF0FD



C9C4F2



80777F



000000



808080

Same Dimension

The Same Dimension uses a secret algorithm to generate beautiful new colors.



F2C4ED



FFC4F9



F2C4D6



786C77



B800A4



380032

Inverse Universe

The Inverse Universe completely reimagines the original color for something new.



F2C4ED



FFC4F9



C4F2E0



786C77



B800A4



380032

Previews

White Background



This preview shows how the Hex color F2C4ED looks on a white background.

Color Contrast Check

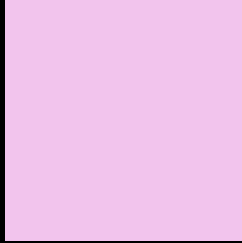
Large Text (above 18pt) WCAG AA × Fail

Any Text WCAG AA × Fail

Large Text (above 18pt) WCAG AAA × Fail

Any Text WCAG AAA × Fail

Black Background



This preview shows how the Hex color F2C4ED looks on a black background.

Color Contrast Check

Large Text (above 18pt) WCAG AA ✓ Pass

Any Text WCAG AA ✓ Pass

Large Text (above 18pt) WCAG AAA ✓ Pass

Any Text WCAG AAA ✓ Pass

If you want to check with other color combinations, try the [Color Contrast Checker](#).

Hex F2C4ED Background



This preview shows how black text looks on a background with the Hex color F2C4ED.

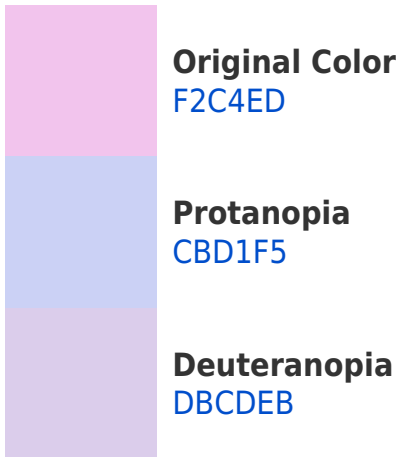


This preview shows how white text looks on a background with the Hex color F2C4ED.

Color Blindness Simulation

Color vision deficiency is a very complex topic, and I could not describe the different causes any better than Wikipedia does, so if you want to learn more, you should check out their [article about color blindness](#).

Dichromacy





Tritanopia
EFC8D7

Trichromacy



Original Color
F2C4ED



Protanomaly
D9CCF2



Deuteranomaly
E3CAEC

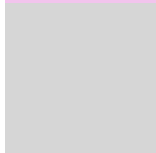


Tritanomaly
F0C7DF

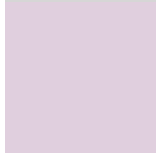
Monochromacy



Original Color
F2C4ED



Achromatopsia
D6D6D6



Achromatomaly
E0CFDE

CSS Examples

Text

The CSS property to change the color of the text to Hex F2C4ED is called "color". The color property can be set on classes, ids or directly on the HTML element.

This example shows how text in the color #F2C4ED looks like.

```
.text, #text, p{  
    color:#F2C4ED  
}
```

If you want to add a text shadow in that color use the text-shadow property, you can generate a text shadow directly with our [CSS Text Shadow Generator](#).

Here you see how black text with a 4 pixel #F2C4ED colored shadow looks like.

```
.shadow{ text-shadow: 4px 4px 2px #F2C4ED
}
```

Border

The CSS property to change the border of an element to Hex F2C4ED is called "border". The border property can be set on classes, ids or directly on the HTML element.

This example shows the color as border, it can be applied via the CSS property "border" or "border-color".

```
.border, #border, table{ border:4px solid
#F2C4ED }
```

If only the border color should be changed use the property `border-color`.

```
.border{ border-color:#F2C4ED }
```

If you want to add a box shadow in that color use:

Here you see how a box with a 4 pixel #F2C4ED colored shadow looks like.

```
.boxshadow{ -moz-box-shadow:4px 4px 4px  
4px #F2C4ED; -webkit-box-shadow:4px 4px  
4px 4px #F2C4ED; box-shadow:4px 4px 4px  
4px #F2C4ED }
```

Background

The CSS property to change the background color of an element to Hex F2C4ED is called "background". The background property can be set on classes, ids or directly on the HTML element.

```
.background, #background, body{  
background:#F2C4ED }
```

If only the background color should be changed can be used:

```
.background{ background-color:#F2C4ED }
```

This example shows the color as background, it is applied via the CSS property "background".

To optimize and compress your CSS code, you can use our [online CSS compressor and optimizer](#) based on csstidy. If you want to create a linear or radial gradient as background or border, check our [CSS Gradient Generator](#).

Hey! You found this booklet interesting? Support Converting Colors with the new Membership Option!

The pro membership hides all ads, plus gives you double the colors in the color bucket, and more awesome pro features!

[Learn more, Memberships starting at \\$2.50/m!](#)

**Follow me
on Twitter!**

@ConvertingColor