

# Converting Colors

Hex(F2C8E6)

Have a look what the booklet for  
Hex(F2C8E6) contains.

<b>Hex(F2C8E6)</b> .....	3
<b><i>Conversions</i></b> .....	4
<b><i>Details</i></b> .....	6
<b><i>Harmonies</i></b> .....	11
<b><i>Previews</i></b> .....	23
<b><i>Color Blindness Simulation</i></b> .....	26
<b><i>CSS Examples</i></b> .....	29

# **Color**

**Hex(F2C8E6)**

# Conversions

## Conversions Part 1

Format	Color
Hex	F2C8E6
RGB	242, 200, 230
RGB Percent	95%, 78%, 90%
CMY	0.0510, 0.2157, 0.0980
CMYK	0.00, 0.17, 0.05, 0.05
HSL	317°, 62%, 87%
HSV	317°, 17%, 95%
XYZ	71.5552, 65.8990, 83.8113
YIQ	215.9780, 15.4020, 18.2340

# Conversions

## Conversions Part 2

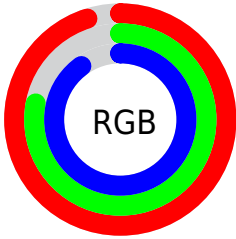
<b>Format</b>	<b>Color</b>
<b>R<sub>YB</sub></b>	242, 200, 230
Decimal	15911142
CIE Lab	84.94, 19.75, -9.25
CIE LCh	85, 21.805, 334.900
Yxy	65.8990, 0.3234, 0.2978
Android (android.graphics.Color)	4294101222 (0xFFFF2C8E6)
YUV	215.9780, 6.9128, 22.8213
Hunter-Lab	81.1782, 15.2784, -4.3884

# Details

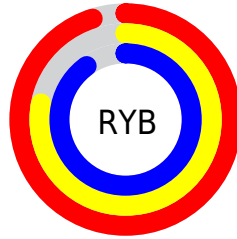
The Hex color **F2C8E6** is a light color, and the websafe version is hex **FFCCFF**. A complement of this color would be **C8F2D4**, and the grayscale version is **D8D8D8**.

A 20% lighter version of the original color is **FFFFFF**, and **BA92AE** is the 20% darker color. If you saturate the color by 10%, you get **F2B0DF**, and if you desaturate by 10%, it is **F2E0ED**.

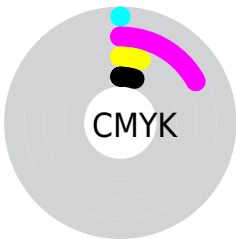
# Distribution



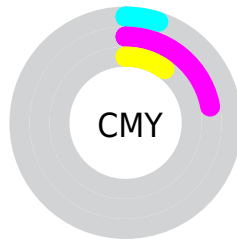
- Red (95%)
- Green (78%)
- Blue (90%)



- Red (95%)
- Yellow (78%)
- Blue (90%)



- Cyan (0%)
- Magenta (17%)
- Yellow (5%)
- Black (5%)



- Cyan (5%)
- Magenta (22%)
- Yellow (10%)

# Brightness & Saturation Gradients

These gradients show how the Hex color F2C8E6 changes by changing the brightness by 10 percent. The first figure shows a shift by +10% for each color and the second figure -10%.

Similar to the brightness gradients but the following saturation gradients show a change of the Hex color F2C8E6 by changing the saturation by 10% instead.



 F2C8E6

FFFFFF

 F2C8E6

 D5ADCA

 BA92AE

 9E7894

 845F7A

 6A4761

 523049

 3A1A33

 25031E

 000001

 F2C8E6

 F2C8E6

 F2B0DF

 F2E0ED

 F298D8

 F2F8F4

 F27FD1

 F2FFFB

 F267CA

 F2FFFF

 F24FC3

 F237BD

 F21FB6

 F206AF

 F200AD

# Harmonies

## Analogous

The Analogous color harmony consists of three colors that are next to each other on the color wheel.



DCCEF6



F2C8E6



FEC6D1

# Triad

The Triadic color harmony groups three colors that are evenly spaced from another and form a triangle on the color wheel.



F2C8E6



E1D4AB



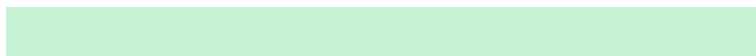
9DDFEB

# Complementary

The Complementary color scheme is a pair of colors which are on the opposite of each other on the color wheel.



F2C8E6



C8F2D4

# Split Complementary

Split-complementary colors differ from the complementary color scheme. The scheme consists of three colors, the original color and two neighbors of the complement color.



A1E0D7



F2C8E6



CADAB2

# Square

The Square scheme is like the rectangle color scheme, but the four colors are evenly spaced on the color wheel.



F2C8E6



F3CDAF



B3DEC2



A9DBF9

# Rectangle

The Rectangle color scheme consists of four colors that form a rectangle on the color wheel.



F2C8E6



FFC7C4



B3DEC2



9DE0E5



# Sweetspot

The Sweet Spot groups the original color and five complimentary colors.



F2C8E6



FFF2FB



D4C8F2



80787D



000000



808080



# Same Dimension

The Same Dimension uses a secret algorithm to generate beautiful new colors.



F2C8E6



FFC9F0



F2C8D1



786C74



B80083



380028



# Inverse Universe

The Inverse Universe completely reimagines the original color for something new.



F2C8E6



FFC9F0



C8F2E9



786C74



B80083

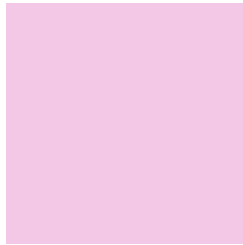


380028



# Previews

## White Background



This preview shows how the Hex color F2C8E6 looks on a white background.

## Color Contrast Check

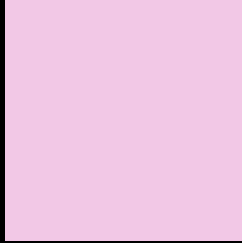
Large Text (above 18pt) WCAG AA × Fail

Any Text WCAG AA × Fail

Large Text (above 18pt) WCAG AAA × Fail

Any Text WCAG AAA × Fail

# Black Background



This preview shows how the Hex color F2C8E6 looks on a black background.

## Color Contrast Check

Large Text (above 18pt) WCAG AA ✓ Pass

Any Text WCAG AA ✓ Pass

Large Text (above 18pt) WCAG AAA ✓ Pass

Any Text WCAG AAA ✓ Pass

If you want to check with other color combinations, try the [Color Contrast Checker](#).



## Hex F2C8E6 Background



This preview shows how black text looks on a background with the Hex color F2C8E6.

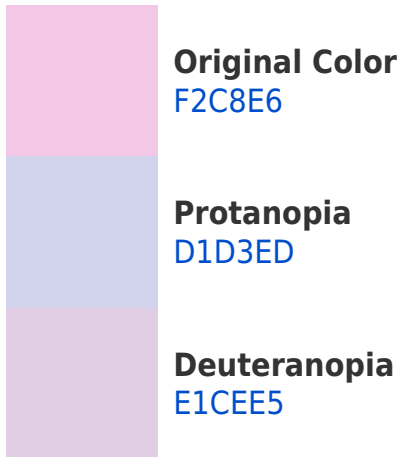


This preview shows how white text looks on a background with the Hex color F2C8E6.

# Color Blindness Simulation

Color vision deficiency is a very complex topic, and I could not describe the different causes any better than Wikipedia does, so if you want to learn more, you should check out their [article about color blindness](#).

## Dichromacy





# Trichromacy



**Original Color**

F2C8E6



**Protanomaly**

DDCFEA



**Deuteranomaly**

E7CCE5



**Tritanomaly**

F1C9DE

# Monochromacy



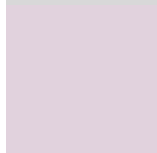
**Original Color**

F2C8E6



**Achromatopsia**

D8D8D8



**Achromatomaly**

E1D2DD

# CSS Examples

## Text

The CSS property to change the color of the text to Hex F2C8E6 is called "color". The color property can be set on classes, ids or directly on the HTML element.

This example shows how text in the color #F2C8E6 looks like.

```
.text, #text, p{  
    color:#F2C8E6  
}
```

If you want to add a text shadow in that color use the text-shadow property, you can generate a text shadow directly with our [CSS Text Shadow Generator](#).

Here you see how black text with a 4 pixel #F2C8E6 colored shadow looks like.

```
.shadow{ text-shadow: 4px 4px 2px #F2C8E6
}
```

## Border

The CSS property to change the border of an element to Hex F2C8E6 is called "border". The border property can be set on classes, ids or directly on the HTML element.

This example shows the color as border, it can be applied via the CSS property "border" or "border-color".

```
.border, #border, table{ border:4px solid
#F2C8E6 }
```

If only the border color should be changed use the property `border-color`.

```
.border{ border-color:#F2C8E6 }
```

If you want to add a box shadow in that color use:

Here you see how a box with a 4 pixel #F2C8E6 colored shadow looks like.

```
.boxshadow{ -moz-box-shadow:4px 4px 4px  
4px #F2C8E6; -webkit-box-shadow:4px 4px  
4px 4px #F2C8E6; box-shadow:4px 4px 4px  
4px #F2C8E6 }
```

# Background

The CSS property to change the background color of an element to Hex F2C8E6 is called "background". The background property can be set on classes, ids or directly on the HTML element.

```
.background, #background, body{  
background:#F2C8E6 }
```

If only the background color should be changed can be used:

```
.background{ background-color:#F2C8E6 }
```

This example shows the color as background, it is applied via the CSS property "background".

To optimize and compress your CSS code, you can use our [online CSS compressor and optimizer](#) based on csstidy. If you want to create a linear or radial gradient as background or border, check our [CSS Gradient Generator](#).



Hey! You found this booklet interesting? Support Converting Colors with the new Membership Option!

The pro membership hides all ads, plus gives you double the colors in the color bucket, and more awesome pro features!

**[Learn more, Memberships starting at \\$2.50/m!](#)**

**Follow me  
on Twitter!**

@ConvertingColor