

Converting Colors

Hex(F2CCB8)

Have a look what the booklet for
Hex(F2CCB8) contains.

Hex(F2CCB8)	3
<i>Conversions</i>	4
<i>Details</i>	6
<i>Harmonies</i>	11
<i>Previews</i>	23
<i>Color Blindness Simulation</i>	26
<i>CSS Examples</i>	29

Color

Hex(F2CCB8)

Conversions

Conversions Part 1

Format	Color
Hex	F2CCB8
RGB	242, 204, 184
RGB Percent	95%, 80%, 72%
CMY	0.0510, 0.2000, 0.2784
CMYK	0.00, 0.16, 0.24, 0.05
HSL	21°, 69%, 84%
HSV	21°, 24%, 95%
XYZ	66.8625, 65.5237, 54.4707
YIQ	213.0820, 29.0680, 1.8360

Conversions

Conversions Part 2

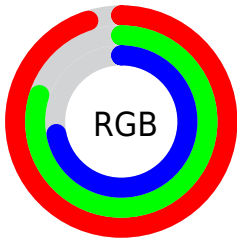
Format	Color
R _Y B	242, 215, 184
Decimal	15912120
CIE Lab	84.75, 10.40, 14.94
CIE LCh	85, 18.209, 55.152
Yxy	65.5237, 0.3578, 0.3507
Android (android.graphics.Color)	4294102200 (0xFFF2CCB8)
YUV	213.0820, -14.3374, 25.3611
Hunter-Lab	80.9467, 5.7856, 16.7652

Details

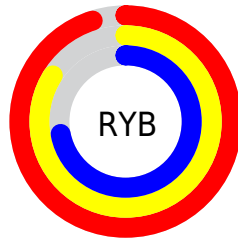
The Hex color **F2CCB8** is a light color, and the websafe version is hex **FFCCCC**. A complement of this color would be **B8DEF2**, and the grayscale version is **D5D5D5**.

A 20% lighter version of the original color is **FFFFFF0**, and **B99683** is the 20% darker color. If you saturate the color by 10%, you get **F2BCA0**, and if you desaturate by 10%, it is **F2DCD0**.

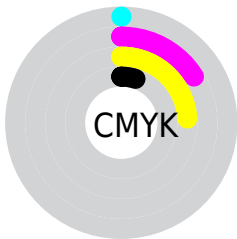
Distribution



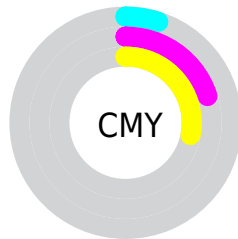
- Red (95%)
- Green (80%)
- Blue (72%)



- Red (95%)
- Yellow (84%)
- Blue (72%)



- Cyan (0%)
- Magenta (16%)
- Yellow (24%)
- Black (5%)



- Cyan (5%)
- Magenta (20%)
- Yellow (28%)

Brightness & Saturation Gradients

These gradients show how the Hex color F2CCB8 changes by changing the brightness by 10 percent. The first figure shows a shift by +10% for each color and the second figure -10%.

Similar to the brightness gradients but the following saturation gradients show a change of the Hex color F2CCB8 by changing the saturation by 10% instead.

 F2CCB8

 F2CCB8

FFFFFF

 D5B19D

 FFFFF0

 B99683

 9E7C6A

 836352

 694B3A

 503425

 381F10

 220800

 000000

 F2CCB8

 F2CCB8

 F2BCA0

 F2DCD0

 F2AC88

 F2ECE8

 F29C6F

 F2FCFF

 F28D57

 F2FFFF

 F27D3F

 F26D27

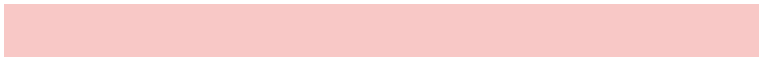
 F25D0F

 F25300

Harmonies

Analogous

The Analogous color harmony consists of three colors that are next to each other on the color wheel.



F8C8C6



F2CCB8



E4D1B2

Triad

The Triadic color harmony groups three colors that are evenly spaced from another and form a triangle on the color wheel.



F2CCB8



AEDED0



D3D0F3

Complementary

The Complementary color scheme is a pair of colors which are on the opposite of each other on the color wheel.



F2CCB8



B8DEF2

Split Complementary

Split-complementary colors differ from the complementary color scheme. The scheme consists of three colors, the original color and two neighbors of the complement color.



BDD6F5



F2CCB8



A7DDE1

Square

The Square scheme is like the rectangle color scheme, but the four colors are evenly spaced on the color wheel.



F2CCB8



BEDBC0



ACDBEF



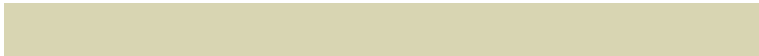
E7CBE7

Rectangle

The Rectangle color scheme consists of four colors that form a rectangle on the color wheel.



F2CCB8



D8D5B2



ACDBEF



CCD2F5

Sweetspot

The Sweet Spot groups the original color and five complimentary colors.



F2CCB8



FFF3ED



F2B8DF



807975



000000



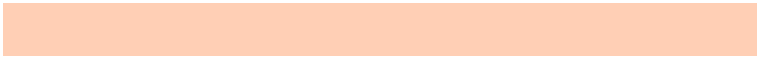
808080

Same Dimension

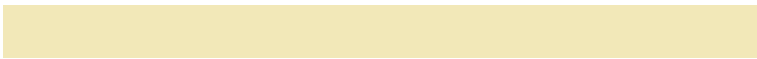
The Same Dimension uses a secret algorithm to generate beautiful new colors.



F2CCB8



FFCFB5



F2E8B8



78706C



B83F00



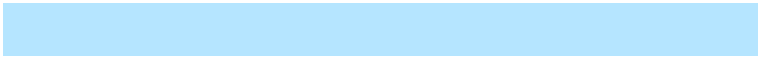
381300

Inverse Universe

The Inverse Universe completely reimagines the original color for something new.



B8DEF2



B5E5FF



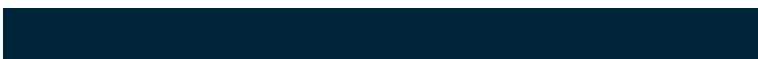
B8C2F2



6C7478



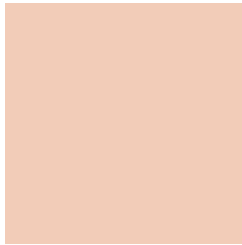
0078B8



002538

Previews

White Background



This preview shows how the Hex color F2CCB8 looks on a white background.

Color Contrast Check

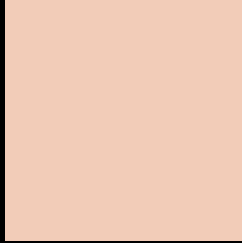
Large Text (above 18pt) WCAG AA × Fail

Any Text WCAG AA × Fail

Large Text (above 18pt) WCAG AAA × Fail

Any Text WCAG AAA × Fail

Black Background



This preview shows how the Hex color F2CCB8 looks on a black background.

Color Contrast Check

Large Text (above 18pt) WCAG AA ✓ Pass

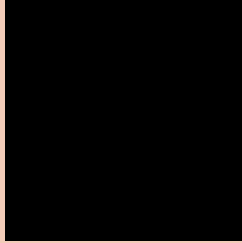
Any Text WCAG AA ✓ Pass

Large Text (above 18pt) WCAG AAA ✓ Pass

Any Text WCAG AAA ✓ Pass

If you want to check with other color combinations, try the [Color Contrast Checker](#).

Hex F2CCB8 Background



This preview shows how black text looks on a background with the Hex color F2CCB8.

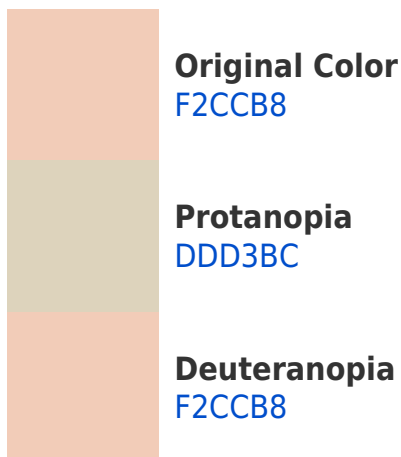


This preview shows how white text looks on a background with the Hex color F2CCB8.

Color Blindness Simulation

Color vision deficiency is a very complex topic, and I could not describe the different causes any better than Wikipedia does, so if you want to learn more, you should check out their [article about color blindness](#).

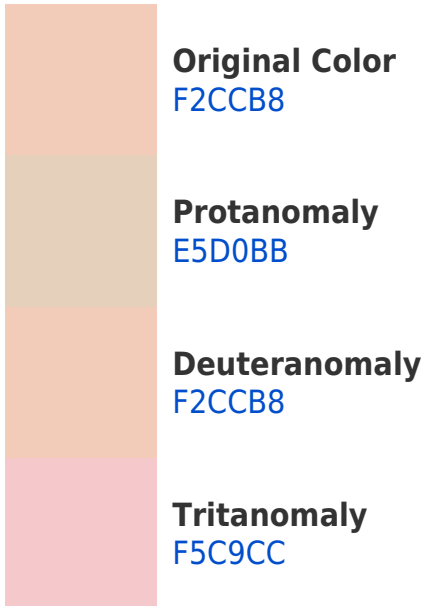
Dichromacy



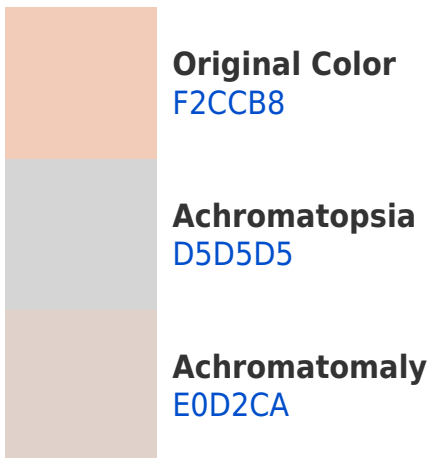


Tritanopia
F6C7D7

Trichromacy



Monochromacy



CSS Examples

Text

The CSS property to change the color of the text to Hex F2CCB8 is called "color". The color property can be set on classes, ids or directly on the HTML element.

This example shows how text in the color #F2CCB8 looks like.

```
.text, #text, p{  
    color:#F2CCB8  
}
```

If you want to add a text shadow in that color use the text-shadow property, you can generate a text shadow directly with our [CSS Text Shadow Generator](#).

Here you see how black text with a 4 pixel #F2CCB8 colored shadow looks like.

```
.shadow{ text-shadow: 4px 4px 2px #F2CCB8
}
```

Border

The CSS property to change the border of an element to Hex F2CCB8 is called "border". The border property can be set on classes, ids or directly on the HTML element.

This example shows the color as border, it can be applied via the CSS property "border" or "border-color".

```
.border, #border, table{ border:4px solid
#F2CCB8 }
```

If only the border color should be changed use the property `border-color`.

```
.border{ border-color:#F2CCB8 }
```

If you want to add a box shadow in that color use:

Here you see how a box with a 4 pixel #F2CCB8 colored shadow looks like.

```
.boxshadow{ -moz-box-shadow:4px 4px 4px  
4px #F2CCB8; -webkit-box-shadow:4px 4px  
4px 4px #F2CCB8; box-shadow:4px 4px 4px  
4px #F2CCB8 }
```

Background

The CSS property to change the background color of an element to Hex F2CCB8 is called "background". The background property can be set on classes, ids or directly on the HTML element.

```
.background, #background, body{  
background:#F2CCB8 }
```

If only the background color should be changed can be used:

```
.background{ background-color:#F2CCB8 }
```

This example shows the color as background, it is applied via the CSS property "background".

To optimize and compress your CSS code, you can use our [online CSS compressor and optimizer](#) based on csstidy. If you want to create a linear or radial gradient as background or border, check our [CSS Gradient Generator](#).

Hey! You found this booklet interesting? Support Converting Colors with the new Membership Option!

The pro membership hides all ads, plus gives you double the colors in the color bucket, and more awesome pro features!

[Learn more, Memberships starting at \\$2.50/m!](#)

**Follow me
on Twitter!**

@ConvertingColor