

Converting Colors

Hex(F2D3D3)

Have a look what the booklet for
Hex(F2D3D3) contains.

Hex(F2D3D3)	3
<i>Conversions</i>	4
<i>Details</i>	6
<i>Harmonies</i>	11
<i>Previews</i>	23
<i>Color Blindness Simulation</i>	26
<i>CSS Examples</i>	29

Color

Hex(F2D3D3)

Conversions

Conversions Part 1

Format	Color
Hex	F2D3D3
RGB	242, 211, 211
RGB Percent	95%, 83%, 83%
CMY	0.0510, 0.1725, 0.1725
CMYK	0.00, 0.13, 0.13, 0.05
HSL	0°, 54%, 89%
HSV	0°, 13%, 95%
XYZ	71.6701, 70.1689, 71.3946
YIQ	220.2690, 18.4760, 6.5720

Conversions

Conversions Part 2

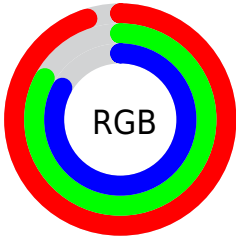
Format	Color
R _Y B	242, 211, 211
Decimal	15913939
CIE Lab	87.08, 10.79, 3.97
CIE LCh	87, 11.495, 20.209
Yxy	70.1689, 0.3361, 0.3291
Android (android.graphics.Color)	4294104019 (0xFFFF2D3D3)
YUV	220.2690, -4.5696, 19.0581
Hunter-Lab	83.7669, 6.1307, 8.1039

Details

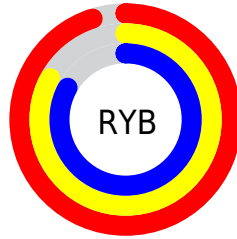
The Hex color **F2D3D3** is a light color, and the websafe version is hex **FFCCCC**. A complement of this color would be **D3F2F2**, and the grayscale version is **DCDCDC**.

A 20% lighter version of the original color is **FFFFFF**, and **BA9C9D** is the 20% darker color. If you saturate the color by 10%, you get **F2BBBB**, and if you desaturate by 10%, it is **F2EBEB**.

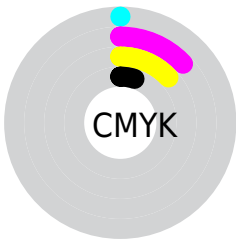
Distribution



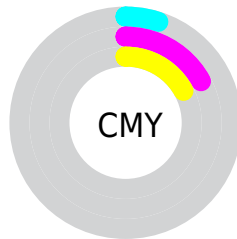
- Red (95%)
- Green (83%)
- Blue (83%)



- Red (95%)
- Yellow (83%)
- Blue (83%)



- Cyan (0%)
- Magenta (13%)
- Yellow (13%)
- Black (5%)



- Cyan (5%)
- Magenta (17%)
- Yellow (17%)

Brightness & Saturation Gradients

These gradients show how the Hex color F2D3D3 changes by changing the brightness by 10 percent. The first figure shows a shift by +10% for each color and the second figure -10%.

Similar to the brightness gradients but the following saturation gradients show a change of the Hex color F2D3D3 by changing the saturation by 10% instead.

 F2D3D3

 F2D3D3

FFFFFF

 D5B7B7

 BA9C9D

 9F8282

 846969

 6B5151

 523A3A

 3B2425

 251010

 000000

 F2D3D3

 F2D3D3

 F2BBBB

 F2EBEB

 F2A3A3

 F2FFFF

 F28A8A

 F27272

 F25A5A

 F24242

 F22A2A

 F21111

 F20000

Harmonies

Analogous

The Analogous color harmony consists of three colors that are next to each other on the color wheel.



EED3DE



F2D3D3



EFD5CA

Triad

The Triadic color harmony groups three colors that are evenly spaced from another and form a triangle on the color wheel.



F2D3D3



CFDFCC



CBDCEF

Complementary

The Complementary color scheme is a pair of colors which are on the opposite of each other on the color wheel.



F2D3D3



D3F2F2

Split Complementary

Split-complementary colors differ from the complementary color scheme. The scheme consists of three colors, the original color and two neighbors of the complement color.



C2DFEA



F2D3D3



C4E0D6

Square

The Square scheme is like the rectangle color scheme, but the four colors are evenly spaced on the color wheel.



F2D3D3



DBDCC6



BFE1E1



D8D9EE

Rectangle

The Rectangle color scheme consists of four colors that form a rectangle on the color wheel.



F2D3D3



EAD7C6



BFE1E1



C7DDEE

Sweetspot

The Sweet Spot groups the original color and five complimentary colors.



F2D3D3



FFF5F5



F2D3F2



807979



000000



808080

Same Dimension

The Same Dimension uses a secret algorithm to generate beautiful new colors.



F2D3D3



FFD9D9



F2E2D3



786C6C



B80000



380000

Inverse Universe

The Inverse Universe completely reimagines the original color for something new.



D3F2F2



D9FFFF



D3E2F2



6C7878



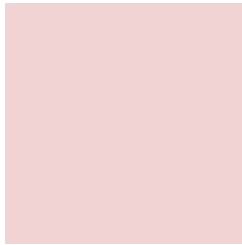
00B8B8



003838

Previews

White Background



This preview shows how the Hex color F2D3D3 looks on a white background.

Color Contrast Check

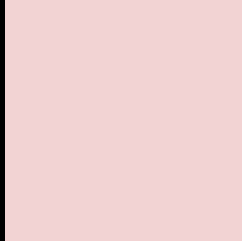
Large Text (above 18pt) WCAG AA × Fail

Any Text WCAG AA × Fail

Large Text (above 18pt) WCAG AAA × Fail

Any Text WCAG AAA × Fail

Black Background



This preview shows how the Hex color F2D3D3 looks on a black background.

Color Contrast Check

Large Text (above 18pt) WCAG AA ✓ Pass

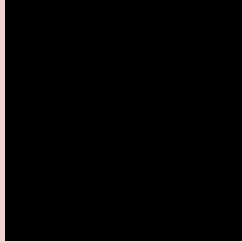
Any Text WCAG AA ✓ Pass

Large Text (above 18pt) WCAG AAA ✓ Pass

Any Text WCAG AAA ✓ Pass

If you want to check with other color combinations, try the [Color Contrast Checker](#).

Hex F2D3D3 Background



This preview shows how black text looks on a background with the Hex color F2D3D3.

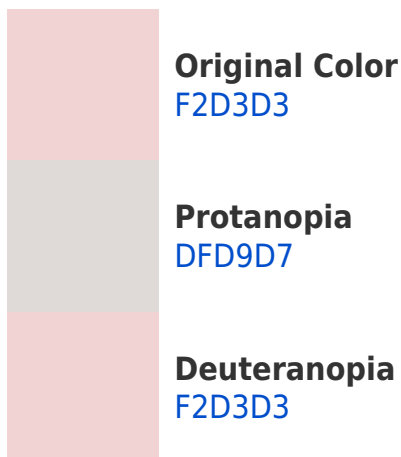


This preview shows how white text looks on a background with the Hex color F2D3D3.

Color Blindness Simulation

Color vision deficiency is a very complex topic, and I could not describe the different causes any better than Wikipedia does, so if you want to learn more, you should check out their [article about color blindness](#).

Dichromacy





Tritanopia
F4D1E1

Trichromacy



Original Color
F2D3D3

Protanomaly
E6D7D6

Deuteranomaly
F2D3D3

Tritanomaly
F3D2DC

Monochromacy



Original Color
F2D3D3

Achromatopsia
DCDCDC

Achromatomaly
E4D9D9

CSS Examples

Text

The CSS property to change the color of the text to Hex F2D3D3 is called "color". The color property can be set on classes, ids or directly on the HTML element.

This example shows how text in the color #F2D3D3 looks like.

```
.text, #text, p{  
    color:#F2D3D3  
}
```

If you want to add a text shadow in that color use the text-shadow property, you can generate a text shadow directly with our [CSS Text Shadow Generator](#).

Here you see how black text with a 4 pixel #F2D3D3 colored shadow looks like.

```
.shadow{ text-shadow: 4px 4px 2px #F2D3D3
}
```

Border

The CSS property to change the border of an element to Hex F2D3D3 is called "border". The border property can be set on classes, ids or directly on the HTML element.

This example shows the color as border, it can be applied via the CSS property "border" or "border-color".

```
.border, #border, table{ border:4px solid
#F2D3D3 }
```

If only the border color should be changed use the property `border-color`.

```
.border{ border-color:#F2D3D3 }
```

If you want to add a box shadow in that color use:

Here you see how a box with a 4 pixel #F2D3D3 colored shadow looks like.

```
.boxshadow{ -moz-box-shadow:4px 4px 4px  
4px #F2D3D3; -webkit-box-shadow:4px 4px  
4px 4px #F2D3D3; box-shadow:4px 4px 4px  
4px #F2D3D3 }
```

Background

The CSS property to change the background color of an element to Hex F2D3D3 is called "background". The background property can be set on classes, ids or directly on the HTML element.

```
.background, #background, body{  
background:#F2D3D3 }
```

If only the background color should be changed can be used:

```
.background{ background-color:#F2D3D3 }
```

This example shows the color as background, it is applied via the CSS property "background".

To optimize and compress your CSS code, you can use our [online CSS compressor and optimizer](#) based on csstidy. If you want to create a linear or radial gradient as background or border, check our [CSS Gradient Generator](#).

Hey! You found this booklet interesting? Support Converting Colors with the new Membership Option!

The pro membership hides all ads, plus gives you double the colors in the color bucket, and more awesome pro features!

[Learn more, Memberships starting at \\$2.50/m!](#)

**Follow me
on Twitter!**

@ConvertingColor