

Converting Colors

Hex(F33170)

Have a look what the booklet for
Hex(F33170) contains.

Hex(F33170)	3
<i>Conversions</i>	4
<i>Details</i>	6
<i>Harmonies</i>	11
<i>Previews</i>	23
<i>Color Blindness Simulation</i>	26
<i>CSS Examples</i>	29

Color

Hex(F33170)

Conversions

Conversions Part 1

Format	Color
Hex	F33170
RGB	243, 49, 112
RGB Percent	95%, 19%, 44%
CMY	0.0471, 0.8078, 0.5608
CMYK	0.00, 0.80, 0.54, 0.05
HSL	341°, 89%, 57%
HSV	341°, 80%, 95%
XYZ	40.9851, 22.4212, 17.4968
YIQ	114.1880, 95.4010, 60.7210

Conversions

Conversions Part 2

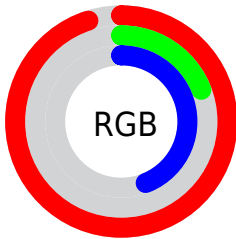
Format	Color
R_{YB}	243, 49, 112
Decimal	15937904
CIE _{Lab}	54.47, 73.99, 12.77
CIE _{LCh}	54, 75.085, 9.791
Yxy	22.4212, 0.5066, 0.2771
Android (android.graphics.Color)	4294127984 (0xFFFF33170)
YUV	114.1880, -1.0787, 112.9681
Hunter-Lab	47.3510, 71.6381, 11.2373

Details

The Hex color **F33170** is a dark color, and the websafe version is hex **FF3366**. The color can be described as middle washed rose. A complement of this color would be **31F3B4**, and the grayscale version is **727272**.

A 20% lighter version of the original color is **FF73A3**, and **B40041** is the 20% darker color. If you saturate the color by 10%, you get **F31960**, and if you desaturate by 10%, it is **F34980**.

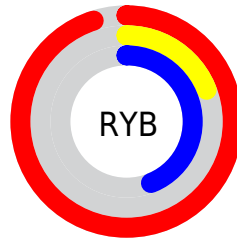
Distribution



Red (95%)

Green (19%)

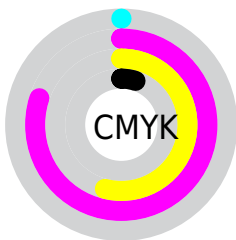
Blue (44%)



Red (95%)

Yellow (19%)

Blue (44%)

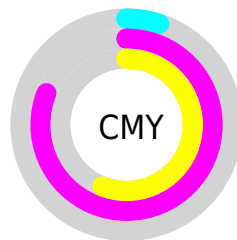


Cyan (0%)

Magenta (80%)

Yellow (54%)

Black (5%)



Cyan (5%)

Magenta (81%)

Yellow (56%)

Brightness & Saturation Gradients

These gradients show how the Hex color F33170 changes by changing the brightness by 10 percent. The first figure shows a shift by +10% for each color and the second figure -10%.

Similar to the brightness gradients but the following saturation gradients show a change of the Hex color F33170 by changing the saturation by 10% instead.

 F33170

 F33170

FFFFFF

 D30058

 FF73A3

 B40041

 FF91BE

 95002B

 FFAEDA

 760018

 FFCCF6

 580003

 FFEAFF

 3A0002

 110000

 000000

 F33170

 F33170

 F31960

 F34980

 F3004F

 F36291

 F37AA1

 F392B2

 F3AAC2

 F3C3D2

 F3DBE3

 F3F3F3

 F3FFFF

Harmonies

Analogous

The Analogous color harmony consists of three colors that are next to each other on the color wheel.



DE41B1



F33170



E64D31

Triad

The Triadic color harmony groups three colors that are evenly spaced from another and form a triangle on the color wheel.



F33170



3F9500



0095FD

Complementary

The Complementary color scheme is a pair of colors which are on the opposite of each other on the color wheel.



F33170



31F3B4

Split Complementary

Split-complementary colors differ from the complementary color scheme. The scheme consists of three colors, the original color and two neighbors of the complement color.



009DD4



F33170



009C52

Square

The Square scheme is like the rectangle color scheme, but the four colors are evenly spaced on the color wheel.



F33170



8A8600



009F97



0084FF

Rectangle

The Rectangle color scheme consists of four colors that form a rectangle on the color wheel.



F33170



CF6400



009F97



0099F3

Sweetspot

The Sweet Spot groups the original color and five complimentary colors.



F33170



FFC2D6



B231F3



805B67



000000



808080

Same Dimension

The Same Dimension uses a secret algorithm to generate beautiful new colors.



F33170



FF0A5A



F35131



7A6E72



BA003C



3B0013

Inverse Universe

The Inverse Universe completely reimagines the original color for something new.



F33170



FF0A5A



31D3F3



7A6E72



BA003C



3B0013

Previews

White Background



This preview shows how the Hex color F33170 looks on a white background.

Color Contrast Check

Large Text (above 18pt) WCAG AA ✓ Pass

Any Text WCAG AA × Fail

Large Text (above 18pt) WCAG AAA × Fail

Any Text WCAG AAA × Fail

Black Background



Color Contrast Check

Large Text (above 18pt) WCAG AA ✓ Pass

Any Text WCAG AA ✓ Pass

Large Text (above 18pt) WCAG AAA ✓ Pass

Any Text WCAG AAA × Fail

If you want to check with other color combinations, try the [Color Contrast Checker](#).

Hex F33170 Background



This preview shows how black text looks on a background with the Hex color F33170.

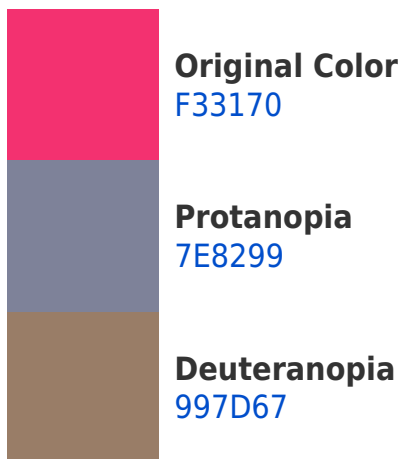


This preview shows how white text looks on a background with the Hex color F33170.

Color Blindness Simulation

Color vision deficiency is a very complex topic, and I could not describe the different causes any better than Wikipedia does, so if you want to learn more, you should check out their [article about color blindness](#).

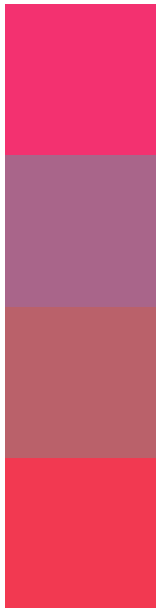
Dichromacy





Tritanopia
F13E40

Trichromacy



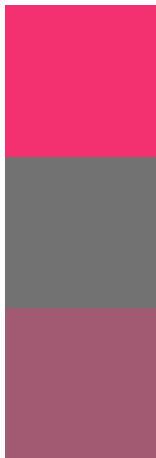
Original Color
F33170

Protanomaly
A9658A

Deuteranomaly
BA616A

Tritanomaly
F23951

Monochromacy



Original Color
F33170

Achromatopsia
727272

Achromatomaly
A15A71

CSS Examples

Text

The CSS property to change the color of the text to Hex F33170 is called "color". The color property can be set on classes, ids or directly on the HTML element.

This example shows how text in the color #F33170 looks like.

```
.text, #text, p{  
    color:#F33170  
}
```

If you want to add a text shadow in that color use the text-shadow property, you can generate a text shadow directly with our [CSS Text Shadow Generator](#).

Here you see how black text with a 4 pixel #F33170 colored shadow looks like.

```
.shadow{ text-shadow: 4px 4px 2px #F33170
}
```

Border

The CSS property to change the border of an element to Hex F33170 is called "border". The border property can be set on classes, ids or directly on the HTML element.

This example shows the color as border, it can be applied via the CSS property "border" or "border-color".

```
.border, #border, table{ border:4px solid
#F33170 }
```

If only the border color should be changed use the property `border-color`.

```
.border{ border-color:#F33170 }
```

If you want to add a box shadow in that color use:

Here you see how a box with a 4 pixel #F33170 colored shadow looks like.

```
.boxshadow{ -moz-box-shadow:4px 4px 4px  
4px #F33170; -webkit-box-shadow:4px 4px  
4px 4px #F33170; box-shadow:4px 4px 4px  
4px #F33170 }
```

Background

The CSS property to change the background color of an element to Hex F33170 is called "background". The background property can be set on classes, ids or directly on the HTML element.

```
.background, #background, body{  
background:#F33170 }
```

If only the background color should be changed can be used:

```
.background{ background-color:#F33170 }
```

This example shows the color as background, it is applied via the CSS property "background".

To optimize and compress your CSS code, you can use our [online CSS compressor and optimizer](#) based on csstidy. If you want to create a linear or radial gradient as background or border, check our [CSS Gradient Generator](#).

Hey! You found this booklet interesting? Support Converting Colors with the new Membership Option!

The pro membership hides all ads, plus gives you double the colors in the color bucket, and more awesome pro features!

[Learn more, Memberships starting at \\$2.50/m!](#)

**Follow me
on Twitter!**

@ConvertingColor