

Converting Colors

Hex(F3376F)

Have a look what the booklet for
Hex(F3376F) contains.

Hex(F3376F)	3
<i>Conversions</i>	4
<i>Details</i>	6
<i>Harmonies</i>	11
<i>Previews</i>	23
<i>Color Blindness Simulation</i>	26
<i>CSS Examples</i>	29

Color

Hex(F3376F)

Conversions

Conversions Part 1

Format	Color
Hex	F3376F
RGB	243, 55, 111
RGB Percent	95%, 22%, 44%
CMY	0.0471, 0.7843, 0.5647
CMYK	0.00, 0.77, 0.54, 0.05
HSL	342°, 89%, 58%
HSV	342°, 77%, 95%
XYZ	41.1976, 22.9348, 17.2944
YIQ	117.5960, 94.0720, 57.2720

Conversions

Conversions Part 2

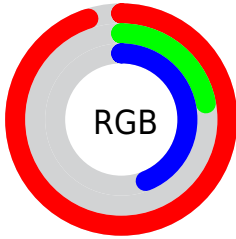
Format	Color
R_{YB}	243, 55, 111
Decimal	15939439
CIE _{Lab}	55.01, 72.34, 14.11
CIE _{LCh}	55, 73.704, 11.037
Yxy	22.9348, 0.5059, 0.2817
Android (android.graphics.Color)	4294129519 (0xFFFF3376F)
YUV	117.5960, -3.2518, 109.9793
Hunter-Lab	47.8902, 69.7467, 12.1120

Details

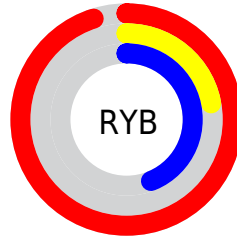
The Hex color **F3376F** is a dark color, and the websafe version is hex **FF3366**. The color can be described as middle washed rose. A complement of this color would be **37F3BB**, and the grayscale version is **767676**.

A 20% lighter version of the original color is **FF77A2**, and **B40040** is the 20% darker color. If you saturate the color by 10%, you get **F31F5E**, and if you desaturate by 10%, it is **F34F80**.

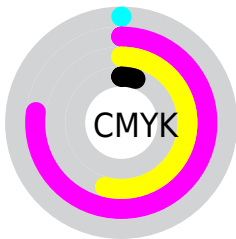
Distribution



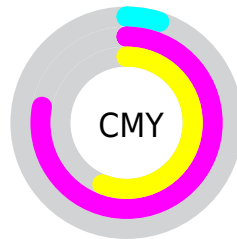
- Red (95%)
- Green (22%)
- Blue (44%)



- Red (95%)
- Yellow (22%)
- Blue (44%)



- Cyan (0%)
- Magenta (77%)
- Yellow (54%)
- Black (5%)



- Cyan (5%)
- Magenta (78%)
- Yellow (56%)

Brightness & Saturation Gradients

These gradients show how the Hex color F3376F changes by changing the brightness by 10 percent. The first figure shows a shift by +10% for each color and the second figure -10%.

Similar to the brightness gradients but the following saturation gradients show a change of the Hex color F3376F by changing the saturation by 10% instead.

 F3376F

 F3376F

FFFFFF

 D30057

 FF77A2

 B40040

 FF94BD

 95002A

 FFB2D9

 760017

 FFD0F5

 580002

 FFEEFF

 3A0002

 120000

 000000

 F3376F

 F3376F

 F31F5E

 F34F80

 F3064D

 F36891

 F30048

 F380A2

 F398B3

 F3B0C4

 F3C9D5

 F3E1E6

 F3F9F7

 F3FFFF

Harmonies

Analogous

The Analogous color harmony consists of three colors that are next to each other on the color wheel.



E044AF



F3376F



E55232

Triad

The Triadic color harmony groups three colors that are evenly spaced from another and form a triangle on the color wheel.



F3376F



3E960B



0096FD

Complementary

The Complementary color scheme is a pair of colors which are on the opposite of each other on the color wheel.



F3376F



37F3BB

Split Complementary

Split-complementary colors differ from the complementary color scheme. The scheme consists of three colors, the original color and two neighbors of the complement color.



009ED7



F3376F



009D57

Square

The Square scheme is like the rectangle color scheme, but the four colors are evenly spaced on the color wheel.



F3376F



898800



00A09A



0084FF

Rectangle

The Rectangle color scheme consists of four colors that form a rectangle on the color wheel.



F3376F



CE6800



00A09A



009AF4

Sweetspot

The Sweet Spot groups the original color and five complimentary colors.



F3376F



FFC4D6



BB37F3



805C66



000000



808080

Same Dimension

The Same Dimension uses a secret algorithm to generate beautiful new colors.



F3376F



FF1258



F35D37



7A6E72



BA0037



3B0011

Inverse Universe

The Inverse Universe completely reimagines the original color for something new.



F3376F



FF1258



37CDF3



7A6E72



BA0037



3B0011

Previews

White Background



This preview shows how the Hex color F3376F looks on a white background.

Color Contrast Check

Large Text (above 18pt) WCAG AA ✓ Pass

Any Text WCAG AA ✗ Fail

Large Text (above 18pt) WCAG AAA ✗ Fail

Any Text WCAG AAA ✗ Fail

Black Background



Color Contrast Check

Large Text (above 18pt) WCAG AA ✓ Pass

Any Text WCAG AA ✓ Pass

Large Text (above 18pt) WCAG AAA ✓ Pass

Any Text WCAG AAA × Fail

If you want to check with other color combinations, try the [Color Contrast Checker](#).

Hex F3376F Background



This preview shows how black text looks on a background with the Hex color F3376F.

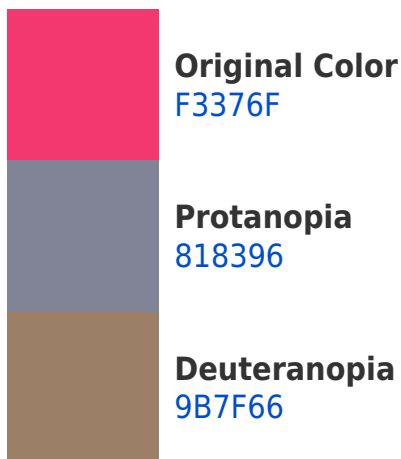


This preview shows how white text looks on a background with the Hex color F3376F.

Color Blindness Simulation

Color vision deficiency is a very complex topic, and I could not describe the different causes any better than Wikipedia does, so if you want to learn more, you should check out their [article about color blindness](#).

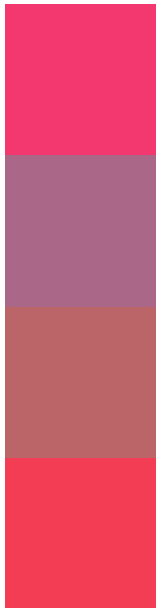
Dichromacy





Tritanopia
F14144

Trichromacy



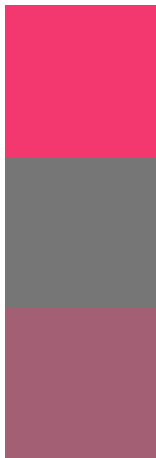
Original Color
F3376F

Protanomaly
AA6788

Deuteranomaly
BB6569

Tritanomaly
F23D54

Monochromacy



Original Color
F3376F

Achromatopsia
767676

Achromatomaly
A35F73

CSS Examples

Text

The CSS property to change the color of the text to Hex F3376F is called "color". The color property can be set on classes, ids or directly on the HTML element.

This example shows how text in the color #F3376F looks like.

```
.text, #text, p{  
    color:#F3376F  
}
```

If you want to add a text shadow in that color use the text-shadow property, you can generate a text shadow directly with our [CSS Text Shadow Generator](#).

Here you see how black text with a 4 pixel #F3376F colored shadow looks like.

```
.shadow{ text-shadow: 4px 4px 2px #F3376F
}
```

Border

The CSS property to change the border of an element to Hex F3376F is called "border". The border property can be set on classes, ids or directly on the HTML element.

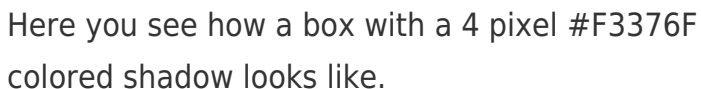
This example shows the color as border, it can be applied via the CSS property "border" or "border-color".

```
.border, #border, table{ border:4px solid
#F3376F }
```

If only the border color should be changed use the property `border-color`.

```
.border{ border-color:#F3376F }
```

If you want to add a box shadow in that color use:



Here you see how a box with a 4 pixel #F3376F colored shadow looks like.

```
.boxshadow{ -moz-box-shadow:4px 4px 4px  
4px #F3376F; -webkit-box-shadow:4px 4px  
4px 4px #F3376F; box-shadow:4px 4px 4px  
4px #F3376F }
```

Background

The CSS property to change the background color of an element to Hex F3376F is called "background". The background property can be set on classes, ids or directly on the HTML element.

```
.background, #background, body{  
background:#F3376F }
```

If only the background color should be changed can be used:

```
.background{ background-color:#F3376F }
```

This example shows the color as background, it is applied via the CSS property "background".

To optimize and compress your CSS code, you can use our [online CSS compressor and optimizer](#) based on csstidy. If you want to create a linear or radial gradient as background or border, check our [CSS Gradient Generator](#).

Hey! You found this booklet interesting? Support Converting Colors with the new Membership Option!

The pro membership hides all ads, plus gives you double the colors in the color bucket, and more awesome pro features!

[Learn more, Memberships starting at \\$2.50/m!](#)

**Follow me
on Twitter!**

@ConvertingColor