

Converting Colors

Hex(F34D87)

Have a look what the booklet for
Hex(F34D87) contains.

Hex(F34D87)	3
<i>Conversions</i>	4
<i>Details</i>	6
<i>Harmonies</i>	11
<i>Previews</i>	23
<i>Color Blindness Simulation</i>	26
<i>CSS Examples</i>	29

Color

Hex(F34D87)

Conversions

Conversions Part 1

Format	Color
Hex	F34D87
RGB	243, 77, 135
RGB Percent	95%, 30%, 53%
CMY	0.0471, 0.6980, 0.4706
CMYK	0.00, 0.68, 0.44, 0.05
HSL	339°, 87%, 63%
HSV	339°, 68%, 95%
XYZ	43.9892, 26.1117, 25.6432
YIQ	133.2460, 80.3180, 53.2300

Conversions

Conversions Part 2

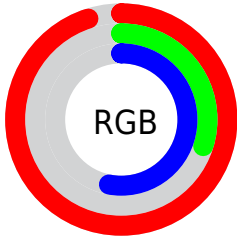
Format	Color
RYB	243, 77, 135
Decimal	15945095
CIELab	58.14, 67.18, 4.32
CIElCh	58, 67.315, 3.682
Yxy	26.1117, 0.4594, 0.2727
Android (android.graphics.Color)	4294135175 (0xFFFF34D87)
YUV	133.2460, 0.8647, 96.2543
Hunter-Lab	51.0996, 64.2377, 6.0163

Details

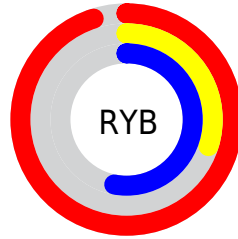
The Hex color **F34D87** is a light color, and the websafe version is hex **FF6699**. The color can be described as light washed rose. A complement of this color would be **4DF3B9**, and the grayscale version is **858585**.

A 20% lighter version of the original color is **FF88BC**, and **B50056** is the 20% darker color. If you saturate the color by 10%, you get **F33577**, and if you desaturate by 10%, it is **F36597**.

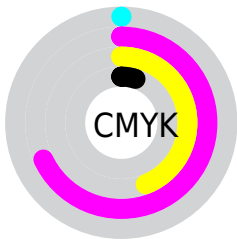
Distribution



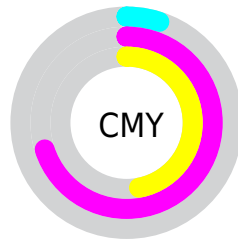
- Red (95%)
- Green (30%)
- Blue (53%)



- Red (95%)
- Yellow (30%)
- Blue (53%)



- Cyan (0%)
- Magenta (68%)
- Yellow (44%)
- Black (5%)



- Cyan (5%)
- Magenta (70%)
- Yellow (47%)

Brightness & Saturation Gradients

These gradients show how the Hex color F34D87 changes by changing the brightness by 10 percent. The first figure shows a shift by +10% for each color and the second figure -10%.

Similar to the brightness gradients but the following saturation gradients show a change of the Hex color F34D87 by changing the saturation by 10% instead.

 F34D87

 F34D87

FFFFFF

 D42C6E

 FF88BC

 B50056

 FFA5D8

 97003F

 FFC2F4

 790029

 FFE0FF

 5C0015

 FFFDFD

 400003

 1E0001

 000000

 F34D87

 F34D87

 F33577

 F36597

 F31C67

 F37EA7

 F30458

 F396B6

 F30055

 F3AEC6

 F3C7D6

 F3DFE6

 F3F7F6

 F3FFFF

Harmonies

Analogous

The Analogous color harmony consists of three colors that are next to each other on the color wheel.



D85CC1



F34D87



EE5B4E

Triad

The Triadic color harmony groups three colors that are evenly spaced from another and form a triangle on the color wheel.



F34D87



649B19



009FF5

Complementary

The Complementary color scheme is a pair of colors which are on the opposite of each other on the color wheel.



F34D87



4DF3B9

Split Complementary

Split-complementary colors differ from the complementary color scheme. The scheme consists of three colors, the original color and two neighbors of the complement color.



00A6CC



F34D87



00A354

Square

The Square scheme is like the rectangle color scheme, but the four colors are evenly spaced on the color wheel.



F34D87



A18C00



00A792



0091FF

Rectangle

The Rectangle color scheme consists of four colors that form a rectangle on the color wheel.



F34D87



DC6C2B



00A792



00A2EA

Sweetspot

The Sweet Spot groups the original color and five complimentary colors.



F34D87



FFCCDE



B94DF3



80616C



000000



808080

Same Dimension

The Same Dimension uses a secret algorithm to generate beautiful new colors.



F34D87



FF2E77



F3664D



7A6E72



BA0041



3B0014

Inverse Universe

The Inverse Universe completely reimagines the original color for something new.



F34D87



FF2E77



4DDAF3



7A6E72



BA0041



3B0014

Previews

White Background



This preview shows how the Hex color F34D87 looks on a white background.

Color Contrast Check

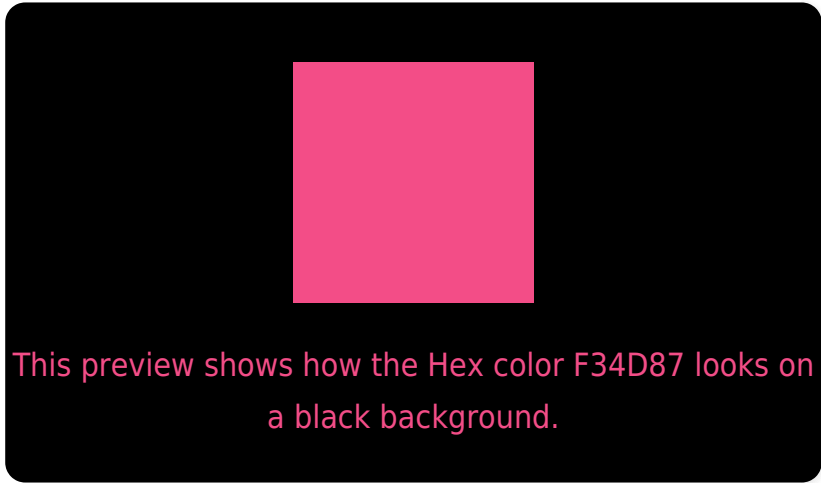
Large Text (above 18pt) WCAG AA ✓ Pass

Any Text WCAG AA × Fail

Large Text (above 18pt) WCAG AAA × Fail

Any Text WCAG AAA × Fail

Black Background



Color Contrast Check

Large Text (above 18pt) WCAG AA ✓ Pass

Any Text WCAG AA ✓ Pass

Large Text (above 18pt) WCAG AAA ✓ Pass

Any Text WCAG AAA × Fail

If you want to check with other color combinations, try the [Color Contrast Checker](#).

Hex F34D87 Background



This preview shows how black text looks on a background with the Hex color F34D87.

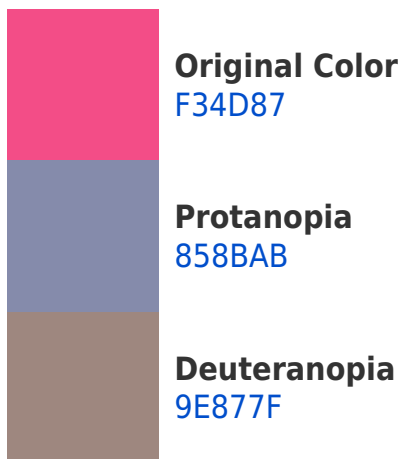


This preview shows how white text looks on a background with the Hex color F34D87.

Color Blindness Simulation

Color vision deficiency is a very complex topic, and I could not describe the different causes any better than Wikipedia does, so if you want to learn more, you should check out their [article about color blindness](#).

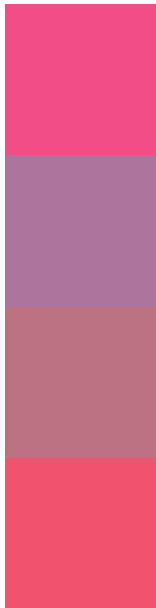
Dichromacy





Tritanopia
F0575C

Trichromacy



Original Color
F34D87

Protanomaly
AD749E

Deuteranomaly
BD7282

Tritanomaly
F1536C

Monochromacy



Original Color
F34D87

Achromatopsia
858585

Achromatomaly
AD7186

CSS Examples

Text

The CSS property to change the color of the text to Hex F34D87 is called "color". The color property can be set on classes, ids or directly on the HTML element.

This example shows how text in the color #F34D87 looks like.

```
.text, #text, p{  
    color:#F34D87  
}
```

If you want to add a text shadow in that color use the text-shadow property, you can generate a text shadow directly with our [CSS Text Shadow Generator](#).

Here you see how black text with a 4 pixel #F34D87 colored shadow looks like.

```
.shadow{ text-shadow: 4px 4px 2px #F34D87
}
```

Border

The CSS property to change the border of an element to Hex F34D87 is called "border". The border property can be set on classes, ids or directly on the HTML element.

This example shows the color as border, it can be applied via the CSS property "border" or "border-color".

```
.border, #border, table{ border:4px solid
#F34D87 }
```

If only the border color should be changed use the property `border-color`.

```
.border{ border-color:#F34D87 }
```

If you want to add a box shadow in that color use:

Here you see how a box with a 4 pixel #F34D87 colored shadow looks like.

```
.boxshadow{ -moz-box-shadow:4px 4px 4px  
4px #F34D87; -webkit-box-shadow:4px 4px  
4px 4px #F34D87; box-shadow:4px 4px 4px  
4px #F34D87 }
```

Background

The CSS property to change the background color of an element to Hex F34D87 is called "background". The background property can be set on classes, ids or directly on the HTML element.

```
.background, #background, body{  
background:#F34D87 }
```

If only the background color should be changed can be used:

```
.background{ background-color:#F34D87 }
```

This example shows the color as background, it is applied via the CSS property "background".

To optimize and compress your CSS code, you can use our [online CSS compressor and optimizer](#) based on csstidy. If you want to create a linear or radial gradient as background or border, check our [CSS Gradient Generator](#).

Hey! You found this booklet interesting? Support Converting Colors with the new Membership Option!

The pro membership hides all ads, plus gives you double the colors in the color bucket, and more awesome pro features!

[Learn more, Memberships starting at \\$2.50/m!](#)

**Follow me
on Twitter!**

@ConvertingColor