

Converting Colors

Hex(F35C89)

Have a look what the booklet for
Hex(F35C89) contains.

Hex(F35C89)	3
<i>Conversions</i>	4
<i>Details</i>	6
<i>Harmonies</i>	11
<i>Previews</i>	23
<i>Color Blindness Simulation</i>	26
<i>CSS Examples</i>	29

Color

Hex(F35C89)

Conversions

Conversions Part 1

Format	Color
Hex	F35C89
RGB	243, 92, 137
RGB Percent	95%, 36%, 54%
CMY	0.0471, 0.6392, 0.4627
CMYK	0.00, 0.62, 0.44, 0.05
HSL	342°, 86%, 66%
HSV	342°, 62%, 95%
XYZ	45.3047, 28.5151, 26.7831
YIQ	142.2790, 75.5510, 46.0070

Conversions

Conversions Part 2

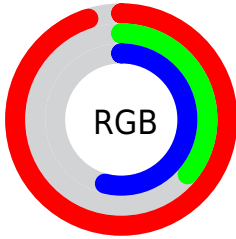
Format	Color
R_{YB}	243, 92, 137
Decimal	15948937
CIE _{Lab}	60.35, 61.47, 6.33
CIE _{LCh}	60, 61.800, 5.876
Yxy	28.5151, 0.4503, 0.2834
Android (android.graphics.Color)	4294139017 (0xFFFF35C89)
YUV	142.2790, -2.6025, 88.3323
Hunter-Lab	53.3996, 57.9918, 7.6422

Details

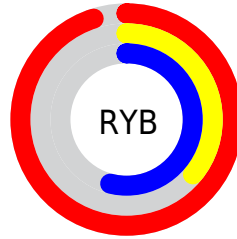
The Hex color **F35C89** is a light color, and the websafe version is hex **FF6699**. The color can be described as light muted rose. A complement of this color would be **5CF3C6**, and the grayscale version is **8E8E8E**.

A 20% lighter version of the original color is **FF95BE**, and **B61C57** is the 20% darker color. If you saturate the color by 10%, you get **F34478**, and if you desaturate by 10%, it is **F3749A**.

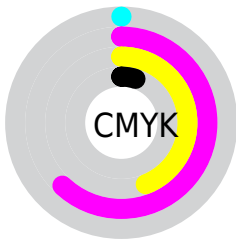
Distribution



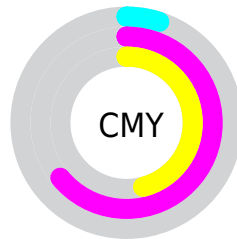
- Red (95%)
- Green (36%)
- Blue (54%)



- Red (95%)
- Yellow (36%)
- Blue (54%)



- Cyan (0%)
- Magenta (62%)
- Yellow (44%)
- Black (5%)



- Cyan (5%)
- Magenta (64%)
- Yellow (46%)

Brightness & Saturation Gradients

These gradients show how the Hex color F35C89 changes by changing the brightness by 10 percent. The first figure shows a shift by +10% for each color and the second figure -10%.

Similar to the brightness gradients but the following saturation gradients show a change of the Hex color F35C89 by changing the saturation by 10% instead.

 F35C89

 F35C89

FFFFFF

 D43F70

 FF95BE

 B61C57

 FFB1DA

 980040

 FFCE66

 7B002B

 FFECFF

 5D0017

 430003

 220001

 000000

 F35C89

 F35C89

 F34478

 F3749A

 F32B67

 F38DAB

 F31356

 F3A5BC

 F30048

 F3BDCD

 F3D5DE

 F3EEEF

 F3FFFF

Harmonies

Analogous

The Analogous color harmony consists of three colors that are next to each other on the color wheel.



DB67BF



F35C89



ED6855

Triad

The Triadic color harmony groups three colors that are evenly spaced from another and form a triangle on the color wheel.



F35C89



6AA031



00A3F5

Complementary

The Complementary color scheme is a pair of colors which are on the opposite of each other on the color wheel.



F35C89



5CF3C6

Split Complementary

Split-complementary colors differ from the complementary color scheme. The scheme consists of three colors, the original color and two neighbors of the complement color.



00AAD0



F35C89



00A863

Square

The Square scheme is like the rectangle color scheme, but the four colors are evenly spaced on the color wheel.



F35C89



A39211



00AB9B



0994FE

Rectangle

The Rectangle color scheme consists of four colors that form a rectangle on the color wheel.



F35C89



DC7736



00AB9B



00A6EB

Sweetspot

The Sweet Spot groups the original color and five complimentary colors.



F35C89



FFCFDD



C65CF3



80626B



000000



808080

Same Dimension

The Same Dimension uses a secret algorithm to generate beautiful new colors.



F35C89



FF4079



F37A5C



7A6E72



BA0037



3B0011

Inverse Universe

The Inverse Universe completely reimagines the original color for something new.



F35C89



FF4079



5CD5F3



7A6E72



BA0037



3B0011

Previews

White Background



This preview shows how the Hex color F35C89 looks on a white background.

Color Contrast Check

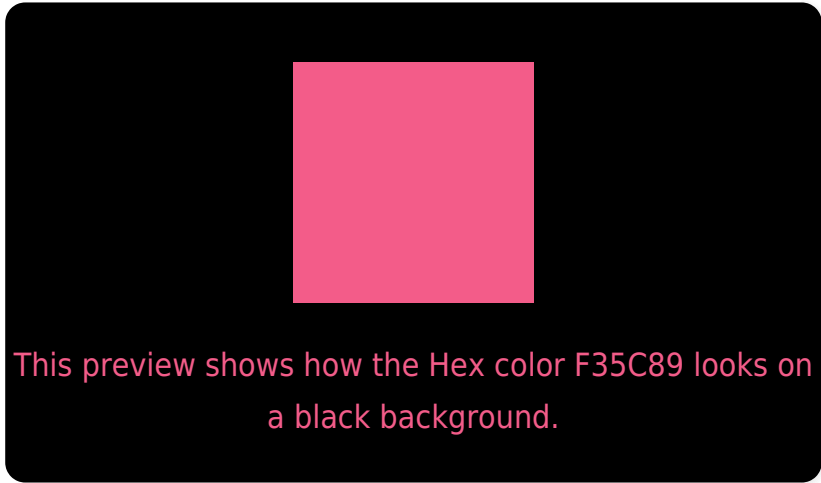
Large Text (above 18pt) WCAG AA ✓ Pass

Any Text WCAG AA × Fail

Large Text (above 18pt) WCAG AAA × Fail

Any Text WCAG AAA × Fail

Black Background



Color Contrast Check

Large Text (above 18pt) WCAG AA ✓ Pass

Any Text WCAG AA ✓ Pass

Large Text (above 18pt) WCAG AAA ✓ Pass

Any Text WCAG AAA × Fail

If you want to check with other color combinations, try the [Color Contrast Checker](#).

Hex F35C89 Background



This preview shows how black text looks on a background with the Hex color F35C89.




This preview shows how white text looks on a background with the Hex color F35C89.

Color Blindness Simulation

Color vision deficiency is a very complex topic, and I could not describe the different causes any better than Wikipedia does, so if you want to learn more, you should check out their [article about color blindness](#).

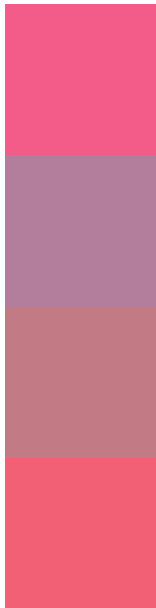
Dichromacy





Tritanopia
F16269

Trichromacy



Original Color
F35C89

Protanomaly
B37E9C

Deuteranomaly
C27B85

Tritanomaly
F26075

Monochromacy



Original Color
F35C89

Achromatopsia
8E8E8E

Achromatomaly
B37C8C

CSS Examples

Text

The CSS property to change the color of the text to Hex F35C89 is called "color". The color property can be set on classes, ids or directly on the HTML element.

This example shows how text in the color #F35C89 looks like.

```
.text, #text, p{  
    color:#F35C89  
}
```

If you want to add a text shadow in that color use the text-shadow property, you can generate a text shadow directly with our [CSS Text Shadow Generator](#).

Here you see how black text with a 4 pixel #F35C89 colored shadow looks like.

```
.shadow{ text-shadow: 4px 4px 2px #F35C89
}
```

Border

The CSS property to change the border of an element to Hex F35C89 is called "border". The border property can be set on classes, ids or directly on the HTML element.

This example shows the color as border, it can be applied via the CSS property "border" or "border-color".

```
.border, #border, table{ border:4px solid
#F35C89 }
```

If only the border color should be changed use the property `border-color`.

```
.border{ border-color:#F35C89 }
```

If you want to add a box shadow in that color use:

Here you see how a box with a 4 pixel #F35C89 colored shadow looks like.

```
.boxshadow{ -moz-box-shadow:4px 4px 4px  
4px #F35C89; -webkit-box-shadow:4px 4px  
4px 4px #F35C89; box-shadow:4px 4px 4px  
4px #F35C89 }
```

Background

The CSS property to change the background color of an element to Hex F35C89 is called "background". The background property can be set on classes, ids or directly on the HTML element.

```
.background, #background, body{  
background:#F35C89 }
```

If only the background color should be changed can be used:

```
.background{ background-color:#F35C89 }
```

This example shows the color as background, it is applied via the CSS property "background".

To optimize and compress your CSS code, you can use our [online CSS compressor and optimizer](#) based on csstidy. If you want to create a linear or radial gradient as background or border, check our [CSS Gradient Generator](#).

Hey! You found this booklet interesting? Support Converting Colors with the new Membership Option!

The pro membership hides all ads, plus gives you double the colors in the color bucket, and more awesome pro features!

[Learn more, Memberships starting at \\$2.50/m!](#)

**Follow me
on Twitter!**

@ConvertingColor