

Converting Colors

Hex(F35F84)

Have a look what the booklet for
Hex(F35F84) contains.

Hex(F35F84)	3
<i>Conversions</i>	4
<i>Details</i>	6
<i>Harmonies</i>	11
<i>Previews</i>	23
<i>Color Blindness Simulation</i>	26
<i>CSS Examples</i>	29

Color

Hex(F35F84)

Conversions

Conversions Part 1

Format	Color
Hex	F35F84
RGB	243, 95, 132
RGB Percent	95%, 37%, 52%
CMY	0.0471, 0.6275, 0.4824
CMYK	0.00, 0.61, 0.46, 0.05
HSL	345°, 86%, 66%
HSV	345°, 61%, 95%
XYZ	45.2192, 28.9050, 25.0257
YIQ	143.4700, 76.3310, 42.8830

Conversions

Conversions Part 2

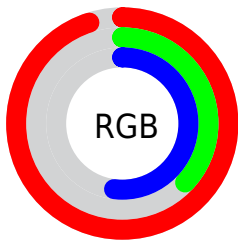
Format	Color
R _Y B	243, 95, 132
Decimal	15949700
CIE Lab	60.70, 59.74, 9.73
CIE LCh	61, 60.523, 9.249
Yxy	28.9050, 0.4561, 0.2915
Android (android.graphics.Color)	4294139780 (0xFFFF35F84)
YUV	143.4700, -5.6547, 87.2878
Hunter-Lab	53.7634, 56.0464, 10.0362

Details

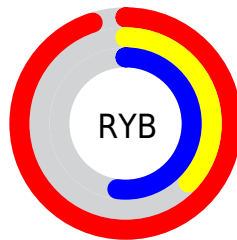
The Hex color **F35F84** is a light color, and the websafe version is hex **FF6699**. The color can be described as light muted rose. A complement of this color would be **5FF3CE**, and the grayscale version is **8F8F8F**.

A 20% lighter version of the original color is **FF97B9**, and **B62253** is the 20% darker color. If you saturate the color by 10%, you get **F34772**, and if you desaturate by 10%, it is **F37796**.

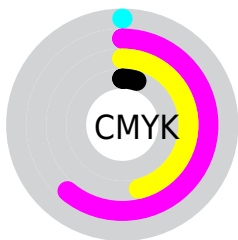
Distribution



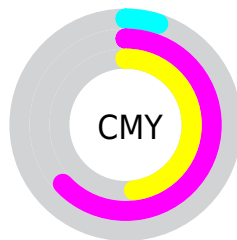
- Red (95%)
- Green (37%)
- Blue (52%)



- Red (95%)
- Yellow (37%)
- Blue (52%)



- Cyan (0%)
- Magenta (61%)
- Yellow (46%)
- Black (5%)



- Cyan (5%)
- Magenta (63%)
- Yellow (48%)

Brightness & Saturation Gradients

These gradients show how the Hex color F35F84 changes by changing the brightness by 10 percent. The first figure shows a shift by +10% for each color and the second figure -10%.

Similar to the brightness gradients but the following saturation gradients show a change of the Hex color F35F84 by changing the saturation by 10% instead.

 F35F84

 F35F84

FFFFFF

 D4426B

 FF97B9

 B62253

 FFB4D4

 98003C

 FFD1F1

 7A0027

 FFEEFF

 5D0012

 420003

 210001

 000000

 F35F84

 F35F84

 F34772

 F37796

 F32E60

 F390A8

 F3164D

 F3A8BB

 F3003D

 F3C0CD

 F3D8DF

 F3F1F1

 F3FFFF

Harmonies

Analogous

The Analogous color harmony consists of three colors that are next to each other on the color wheel.



DF67B9



F35F84



EA6C51

Triad

The Triadic color harmony groups three colors that are evenly spaced from another and form a triangle on the color wheel.



F35F84



65A239



00A2F6

Complementary

The Complementary color scheme is a pair of colors which are on the opposite of each other on the color wheel.



F35F84



5FF3CE

Split Complementary

Split-complementary colors differ from the complementary color scheme. The scheme consists of three colors, the original color and two neighbors of the complement color.



00AAD5



F35F84



00A96A

Square

The Square scheme is like the rectangle color scheme, but the four colors are evenly spaced on the color wheel.



F35F84



9E9519



00ACA2



3D93FC

Rectangle

The Rectangle color scheme consists of four colors that form a rectangle on the color wheel.



F35F84



D87B35



00ACA2



00A6EE

Sweetspot

The Sweet Spot groups the original color and five complimentary colors.



F35F84



FFD1DD



CE5FF3



80636A



000000



808080

Same Dimension

The Same Dimension uses a secret algorithm to generate beautiful new colors.



F35F84



FF4573



F3845F



7A6E71



BA002F



3B000F

Inverse Universe

The Inverse Universe completely reimagines the original color for something new.



F35F84



FF4573



5FCEF3



7A6E71



BA002F



3B000F

Previews

White Background



This preview shows how the Hex color F35F84 looks on a white background.

Color Contrast Check

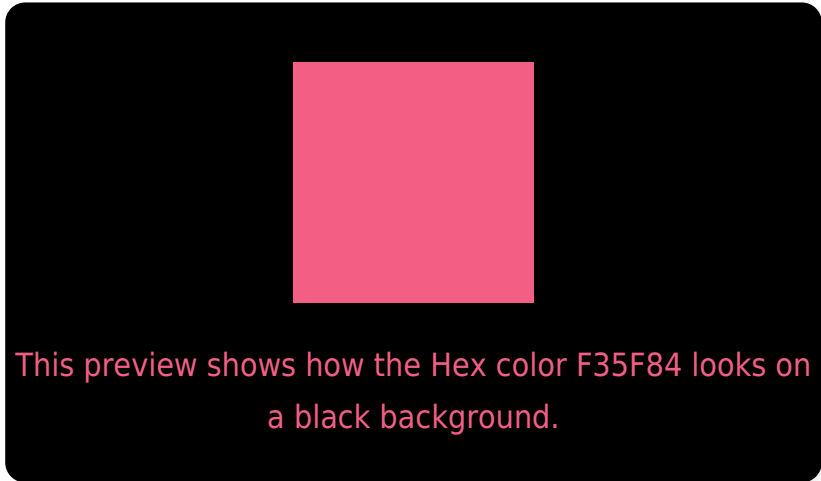
Large Text (above 18pt) WCAG AA ✓ Pass

Any Text WCAG AA × Fail

Large Text (above 18pt) WCAG AAA × Fail

Any Text WCAG AAA × Fail

Black Background



Color Contrast Check

Large Text (above 18pt) WCAG AA ✓ Pass

Any Text WCAG AA ✓ Pass

Large Text (above 18pt) WCAG AAA ✓ Pass

Any Text WCAG AAA × Fail

If you want to check with other color combinations, try the [Color Contrast Checker](#).

Hex F35F84 Background



This preview shows how black text looks on a background with the Hex color F35F84.




This preview shows how white text looks on a background with the Hex color F35F84.

Color Blindness Simulation

Color vision deficiency is a very complex topic, and I could not describe the different causes any better than Wikipedia does, so if you want to learn more, you should check out their [article about color blindness](#).

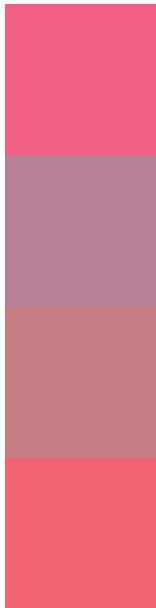
Dichromacy





Tritanopia
F1646A

Trichromacy



Original Color
F35F84

Protanomaly
B57F96

Deuteranomaly
C47C80

Tritanomaly
F26273

Monochromacy



Original Color
F35F84

Achromatopsia
8F8F8F

Achromatomaly
B37E8B

CSS Examples

Text

The CSS property to change the color of the text to Hex F35F84 is called "color". The color property can be set on classes, ids or directly on the HTML element.

This example shows how text in the color #F35F84 looks like.

```
.text, #text, p{  
    color:#F35F84  
}
```

If you want to add a text shadow in that color use the text-shadow property, you can generate a text shadow directly with our [CSS Text Shadow Generator](#).

Here you see how black text with a 4 pixel #F35F84 colored shadow looks like.

```
.shadow{ text-shadow: 4px 4px 2px #F35F84
}
```

Border

The CSS property to change the border of an element to Hex F35F84 is called "border". The border property can be set on classes, ids or directly on the HTML element.

This example shows the color as border, it can be applied via the CSS property "border" or "border-color".

```
.border, #border, table{ border:4px solid
#F35F84 }
```

If only the border color should be changed use the property `border-color`.

```
.border{ border-color:#F35F84 }
```

If you want to add a box shadow in that color use:

Here you see how a box with a 4 pixel #F35F84 colored shadow looks like.

```
.boxshadow{ -moz-box-shadow:4px 4px 4px  
4px #F35F84; -webkit-box-shadow:4px 4px  
4px 4px #F35F84; box-shadow:4px 4px 4px  
4px #F35F84 }
```

Background

The CSS property to change the background color of an element to Hex F35F84 is called "background". The background property can be set on classes, ids or directly on the HTML element.

```
.background, #background, body{  
background:#F35F84 }
```

If only the background color should be changed can be used:

```
.background{ background-color:#F35F84 }
```

This example shows the color as background, it is applied via the CSS property "background".

To optimize and compress your CSS code, you can use our [online CSS compressor and optimizer](#) based on csstidy. If you want to create a linear or radial gradient as background or border, check our [CSS Gradient Generator](#).

Hey! You found this booklet interesting? Support Converting Colors with the new Membership Option!

The pro membership hides all ads, plus gives you double the colors in the color bucket, and more awesome pro features!

[Learn more, Memberships starting at \\$2.50/m!](#)

**Follow me
on Twitter!**

@ConvertingColor