

Converting Colors

Hex(F3607E)

Have a look what the booklet for
Hex(F3607E) contains.

Hex(F3607E)	3
<i>Conversions</i>	4
<i>Details</i>	6
<i>Harmonies</i>	11
<i>Previews</i>	23
<i>Color Blindness Simulation</i>	26
<i>CSS Examples</i>	29

Color

Hex(F3607E)

Conversions

Conversions Part 1

Format	Color
Hex	F3607E
RGB	243, 96, 126
RGB Percent	95%, 38%, 49%
CMY	0.0471, 0.6235, 0.5059
CMYK	0.00, 0.60, 0.48, 0.05
HSL	348°, 86%, 66%
HSV	348°, 60%, 95%
XYZ	44.9109, 28.9268, 22.9550
YIQ	143.3730, 77.9820, 40.4940

Conversions

Conversions Part 2

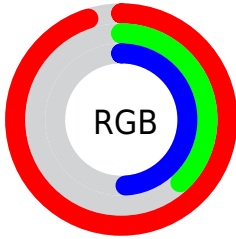
Format	Color
R _{YB}	243, 96, 126
Decimal	15949950
CIE Lab	60.72, 58.76, 13.24
CIE LCh	61, 60.236, 12.695
Yxy	28.9268, 0.4640, 0.2989
Android (android.graphics.Color)	4294140030 (0xFFFF3607E)
YUV	143.3730, -8.5649, 87.3729
Hunter-Lab	53.7836, 54.9314, 12.3434

Details

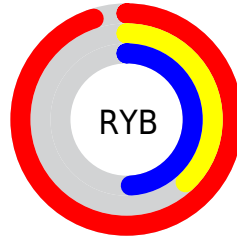
The Hex color **F3607E** is a light color, and the websafe version is hex **FF6699**. A complement of this color would be **60F3D5**, and the grayscale version is **8F8F8F**.

A 20% lighter version of the original color is **FF98B2**, and **B6244D** is the 20% darker color. If you saturate the color by 10%, you get **F3486B**, and if you desaturate by 10%, it is **F37891**.

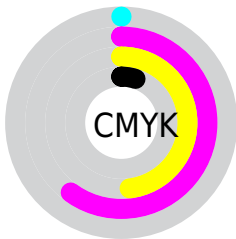
Distribution



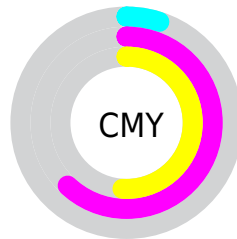
- Red (95%)
- Green (38%)
- Blue (49%)



- Red (95%)
- Yellow (38%)
- Blue (49%)



- Cyan (0%)
- Magenta (60%)
- Yellow (48%)
- Black (5%)



- Cyan (5%)
- Magenta (62%)
- Yellow (51%)

Brightness & Saturation Gradients

These gradients show how the Hex color F3607E changes by changing the brightness by 10 percent. The first figure shows a shift by +10% for each color and the second figure -10%.

Similar to the brightness gradients but the following saturation gradients show a change of the Hex color F3607E by changing the saturation by 10% instead.

 F3607E

 F3607E

FFFFFF

 D44365

 FF98B2

 B6244D

 FFB5CE

 980037

 FFD2EA

 7A0022

 FFEFFF

 5D000C

 420003

 210001

 000000

 F3607E

 F3607E

 F3486B

 F37891

 F32F57

 F391A5

 F31744

 F3A9B8

 F30032

 F3C1CB

 F3D9DF

 F3F2F2

 F3FFFF

Harmonies

Analogous

The Analogous color harmony consists of three colors that are next to each other on the color wheel.



E365B3



F3607E



E76F4D

Triad

The Triadic color harmony groups three colors that are evenly spaced from another and form a triangle on the color wheel.



F3607E



5DA33F



00A1F8

Complementary

The Complementary color scheme is a pair of colors which are on the opposite of each other on the color wheel.



F3607E



60F3D5

Split Complementary

Split-complementary colors differ from the complementary color scheme. The scheme consists of three colors, the original color and two neighbors of the complement color.



00A9D9



F3607E



00AA71

Square

The Square scheme is like the rectangle color scheme, but the four colors are evenly spaced on the color wheel.



F3607E



99971C



00ACA8



5291FB

Rectangle

The Rectangle color scheme consists of four colors that form a rectangle on the color wheel.



F3607E



D47D31



00ACA8



00A5F0

Sweetspot

The Sweet Spot groups the original color and five complimentary colors.



F3607E



FFD1DA



D360F3



806369



000000



808080

Same Dimension

The Same Dimension uses a secret algorithm to generate beautiful new colors.



F3607E



FF456B



F38A60



7A6E71



BA0026



3B000C

Inverse Universe

The Inverse Universe completely reimagines the original color for something new.



F3607E



FF456B



60C9F3



7A6E71



BA0026



3B000C

Previews

White Background



This preview shows how the Hex color F3607E looks on a white background.

Color Contrast Check

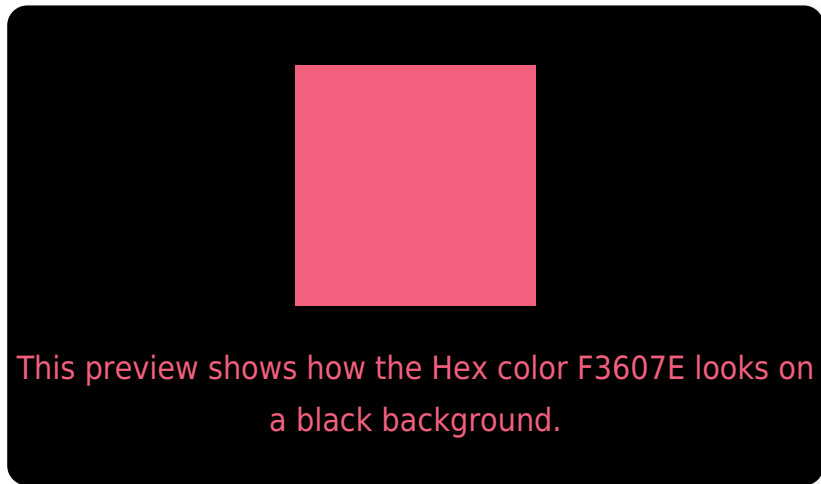
Large Text (above 18pt) WCAG AA ✓ Pass

Any Text WCAG AA ✗ Fail

Large Text (above 18pt) WCAG AAA ✗ Fail

Any Text WCAG AAA ✗ Fail

Black Background



Color Contrast Check

Large Text (above 18pt) WCAG AA ✓ Pass

Any Text WCAG AA ✓ Pass

Large Text (above 18pt) WCAG AAA ✓ Pass

Any Text WCAG AAA × Fail

If you want to check with other color combinations, try the [Color Contrast Checker](#).

Hex F3607E Background



This preview shows how black text looks on a background with the Hex color F3607E.

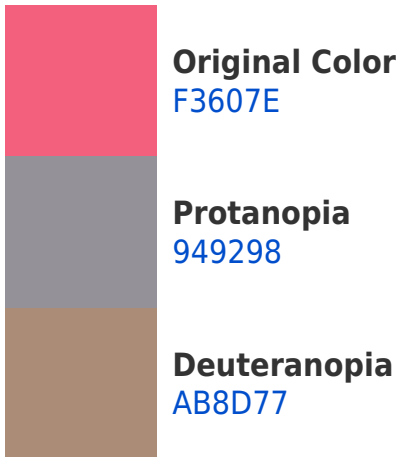


This preview shows how white text looks on a background with the Hex color F3607E.

Color Blindness Simulation

Color vision deficiency is a very complex topic, and I could not describe the different causes any better than Wikipedia does, so if you want to learn more, you should check out their [article about color blindness](#).

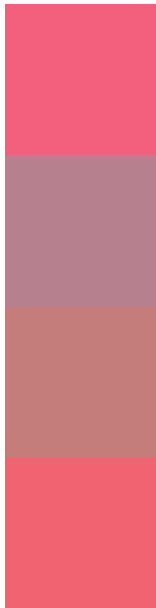
Dichromacy





Tritanopia
F2646A

Trichromacy



Original Color
F3607E

Protanomaly
B7808F

Deuteranomaly
C57D7A

Tritanomaly
F26371

Monochromacy



Original Color
F3607E

Achromatopsia
8F8F8F

Achromatomaly
B37E89

CSS Examples

Text

The CSS property to change the color of the text to Hex F3607E is called "color". The color property can be set on classes, ids or directly on the HTML element.

This example shows how text in the color #F3607E looks like.

```
.text, #text, p{  
    color:#F3607E  
}
```

If you want to add a text shadow in that color use the text-shadow property, you can generate a text shadow directly with our [CSS Text Shadow Generator](#).

Here you see how black text with a 4 pixel #F3607E colored shadow looks like.

```
.shadow{ text-shadow: 4px 4px 2px #F3607E
}
```

Border

The CSS property to change the border of an element to Hex F3607E is called "border". The border property can be set on classes, ids or directly on the HTML element.

This example shows the color as border, it can be applied via the CSS property "border" or "border-color".

```
.border, #border, table{ border:4px solid
#F3607E }
```

If only the border color should be changed use the property `border-color`.

```
.border{ border-color:#F3607E }
```

If you want to add a box shadow in that color use:

Here you see how a box with a 4 pixel #F3607E colored shadow looks like.

```
.boxshadow{ -moz-box-shadow:4px 4px 4px  
4px #F3607E; -webkit-box-shadow:4px 4px  
4px 4px #F3607E; box-shadow:4px 4px 4px  
4px #F3607E }
```

Background

The CSS property to change the background color of an element to Hex F3607E is called "background". The background property can be set on classes, ids or directly on the HTML element.

```
.background, #background, body{  
background:#F3607E }
```

If only the background color should be changed can be used:

```
.background{ background-color:#F3607E }
```

This example shows the color as background, it is applied via the CSS property "background".

To optimize and compress your CSS code, you can use our [online CSS compressor and optimizer](#) based on csstidy. If you want to create a linear or radial gradient as background or border, check our [CSS Gradient Generator](#).

Hey! You found this booklet interesting? Support Converting Colors with the new Membership Option!

The pro membership hides all ads, plus gives you double the colors in the color bucket, and more awesome pro features!

[Learn more, Memberships starting at \\$2.50/m!](#)

**Follow me
on Twitter!**

@ConvertingColor