

Converting Colors

Hex(F36080)

Have a look what the booklet for
Hex(F36080) contains.

Hex(F36080)	3
<i>Conversions</i>	4
<i>Details</i>	6
<i>Harmonies</i>	11
<i>Previews</i>	23
<i>Color Blindness Simulation</i>	26
<i>CSS Examples</i>	29

Color

Hex(F36080)

Conversions

Conversions Part 1

Format	Color
Hex	F36080
RGB	243, 96, 128
RGB Percent	95%, 38%, 50%
CMY	0.0471, 0.6235, 0.4980
CMYK	0.00, 0.60, 0.47, 0.05
HSL	347°, 86%, 66%
HSV	347°, 60%, 95%
XYZ	45.0413, 28.9789, 23.6416
YIQ	143.6010, 77.3400, 41.1160

Conversions

Conversions Part 2

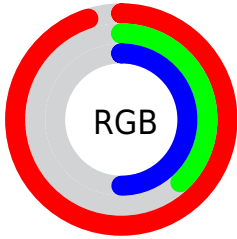
Format	Color
R _Y B	243, 96, 128
Decimal	15949952
CIE Lab	60.76, 58.94, 12.14
CIE LCh	61, 60.179, 11.640
Yxy	28.9789, 0.4612, 0.2967
Android (android.graphics.Color)	4294140032 (0xFFFF36080)
YUV	143.6010, -7.6913, 87.1729
Hunter-Lab	53.8321, 55.1448, 11.6439

Details

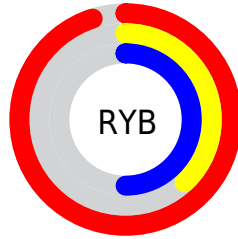
The Hex color **F36080** is a light color, and the websafe version is hex **FF6699**. A complement of this color would be **60F3D3**, and the grayscale version is **909090**.

A 20% lighter version of the original color is **FF98B5**, and **B6234F** is the 20% darker color. If you saturate the color by 10%, you get **F3486D**, and if you desaturate by 10%, it is **F37893**.

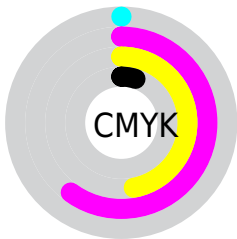
Distribution



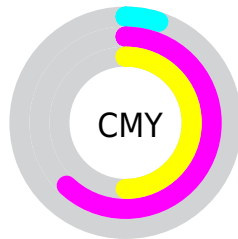
- Red (95%)
- Green (38%)
- Blue (50%)



- Red (95%)
- Yellow (38%)
- Blue (50%)



- Cyan (0%)
- Magenta (60%)
- Yellow (47%)
- Black (5%)



- Cyan (5%)
- Magenta (62%)
- Yellow (50%)

Brightness & Saturation Gradients

These gradients show how the Hex color F36080 changes by changing the brightness by 10 percent. The first figure shows a shift by +10% for each color and the second figure -10%.

Similar to the brightness gradients but the following saturation gradients show a change of the Hex color F36080 by changing the saturation by 10% instead.

 F36080

 F36080

FFFFFF

 D44367

 FF98B5

 B6234F

 FFB5D0

 980039

 FFD2EC

 7A0023

 FFEFFF

 5D000E

 420003

 210001

 000000

 F36080

 F36080

 F3486D

 F37893

 F32F5A

 F391A6

 F31747

 F3A9B9

 F30035

 F3C1CC

 F3D9DF

 F3F2F2

 F3FFFF

Harmonies

Analogous

The Analogous color harmony consists of three colors that are next to each other on the color wheel.



E266B5



F36080



E86E4E

Triad

The Triadic color harmony groups three colors that are evenly spaced from another and form a triangle on the color wheel.



F36080



60A33D



00A1F7

Complementary

The Complementary color scheme is a pair of colors which are on the opposite of each other on the color wheel.



F36080



60F3D3

Split Complementary

Split-complementary colors differ from the complementary color scheme. The scheme consists of three colors, the original color and two neighbors of the complement color.



00AAD8



F36080



00AA6F

Square

The Square scheme is like the rectangle color scheme, but the four colors are evenly spaced on the color wheel.



F36080



9B971C



00ACA6



4D92FB

Rectangle

The Rectangle color scheme consists of four colors that form a rectangle on the color wheel.



F36080



D57D33



00ACA6



00A5F0

Sweetspot

The Sweet Spot groups the original color and five complimentary colors.



F36080



FFD1DB



D160F3



80636A



000000



808080

Same Dimension

The Same Dimension uses a secret algorithm to generate beautiful new colors.



F36080



FF456D



F38760



7A6E71



BA0029



3B000D

Inverse Universe

The Inverse Universe completely reimagines the original color for something new.



F36080



FF456D



60CCF3



7A6E71



BA0029



3B000D

Previews

White Background



This preview shows how the Hex color F36080 looks on a white background.

Color Contrast Check

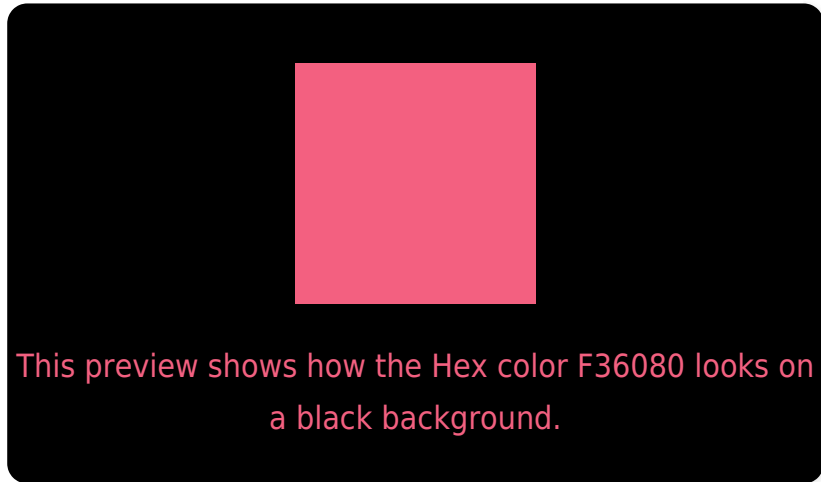
Large Text (above 18pt) WCAG AA ✓ Pass

Any Text WCAG AA × Fail

Large Text (above 18pt) WCAG AAA × Fail

Any Text WCAG AAA × Fail

Black Background



Color Contrast Check

Large Text (above 18pt) WCAG AA ✓ Pass

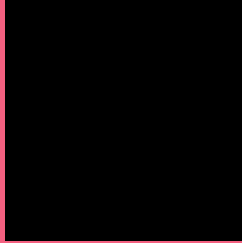
Any Text WCAG AA ✓ Pass

Large Text (above 18pt) WCAG AAA ✓ Pass

Any Text WCAG AAA × Fail

If you want to check with other color combinations, try the [Color Contrast Checker](#).

Hex F36080 Background



This preview shows how black text looks on a background with the Hex color F36080.

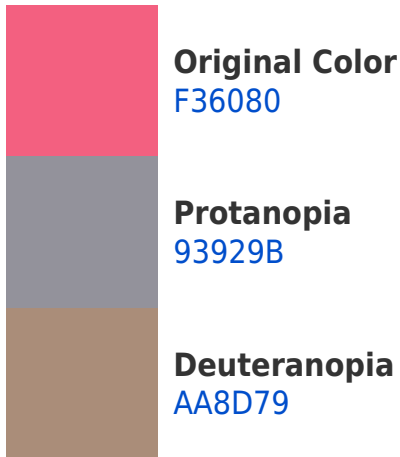


This preview shows how white text looks on a background with the Hex color F36080.

Color Blindness Simulation

Color vision deficiency is a very complex topic, and I could not describe the different causes any better than Wikipedia does, so if you want to learn more, you should check out their [article about color blindness](#).

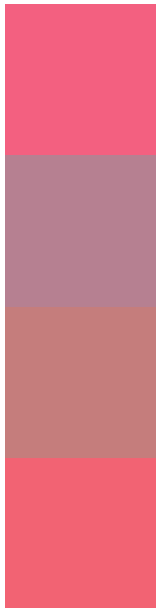
Dichromacy





Tritanopia
F2646B

Trichromacy



Original Color
F36080

Protanomaly
B68091

Deuteranomaly
C57D7C

Tritanomaly
F26373

Monochromacy



Original Color
F36080

Achromatopsia
909090

Achromatomaly
B47F8A

CSS Examples

Text

The CSS property to change the color of the text to Hex F36080 is called "color". The color property can be set on classes, ids or directly on the HTML element.

This example shows how text in the color #F36080 looks like.

```
.text, #text, p{  
    color:#F36080  
}
```

If you want to add a text shadow in that color use the text-shadow property, you can generate a text shadow directly with our [CSS Text Shadow Generator](#).

Here you see how black text with a 4 pixel #F36080 colored shadow looks like.

```
.shadow{ text-shadow: 4px 4px 2px #F36080
}
```

Border

The CSS property to change the border of an element to Hex F36080 is called "border". The border property can be set on classes, ids or directly on the HTML element.

This example shows the color as border, it can be applied via the CSS property "border" or "border-color".

```
.border, #border, table{ border:4px solid
#F36080 }
```

If only the border color should be changed use the property `border-color`.

```
.border{ border-color:#F36080 }
```

If you want to add a box shadow in that color use:

Here you see how a box with a 4 pixel #F36080 colored shadow looks like.

```
.boxshadow{ -moz-box-shadow:4px 4px 4px  
4px #F36080; -webkit-box-shadow:4px 4px  
4px 4px #F36080; box-shadow:4px 4px 4px  
4px #F36080 }
```

Background

The CSS property to change the background color of an element to Hex F36080 is called "background". The background property can be set on classes, ids or directly on the HTML element.

```
.background, #background, body{  
background:#F36080 }
```

If only the background color should be changed can be used:

```
.background{ background-color:#F36080 }
```

This example shows the color as background, it is applied via the CSS property "background".

To optimize and compress your CSS code, you can use our [online CSS compressor and optimizer](#) based on csstidy. If you want to create a linear or radial gradient as background or border, check our [CSS Gradient Generator](#).

Hey! You found this booklet interesting? Support Converting Colors with the new Membership Option!

The pro membership hides all ads, plus gives you double the colors in the color bucket, and more awesome pro features!

[Learn more, Memberships starting at \\$2.50/m!](#)

**Follow me
on Twitter!**

@ConvertingColor