

Converting Colors

Hex(F3758F)

Have a look what the booklet for
Hex(F3758F) contains.

Hex(F3758F)	3
<i>Conversions</i>	4
<i>Details</i>	6
<i>Harmonies</i>	11
<i>Previews</i>	23
<i>Color Blindness Simulation</i>	26
<i>CSS Examples</i>	29

Color

Hex(F3758F)

Conversions

Conversions Part 1

Format	Color
Hex	F3758F
RGB	243, 117, 143
RGB Percent	95%, 46%, 56%
CMY	0.0471, 0.5412, 0.4392
CMYK	0.00, 0.52, 0.41, 0.05
HSL	348°, 84%, 71%
HSV	348°, 52%, 95%
XYZ	48.2814, 33.7604, 29.9583
YIQ	157.6380, 66.7500, 34.7980

Conversions

Conversions Part 2

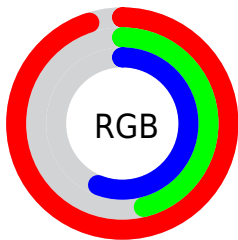
Format	Color
R _Y B	243, 117, 143
Decimal	15955343
CIE Lab	64.77, 50.79, 9.18
CIE LCh	65, 51.617, 10.245
Yxy	33.7604, 0.4311, 0.3014
Android (android.graphics.Color)	4294145423 (0xFFFF3758F)
YUV	157.6380, -7.2165, 74.8625
Hunter-Lab	58.1037, 46.6433, 10.1027

Details

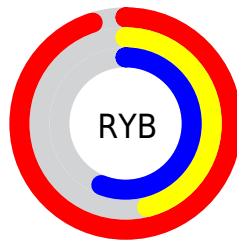
The Hex color **F3758F** is a light color, and the websafe version is hex **FF6699**. A complement of this color would be **75F3D9**, and the grayscale version is **9E9E9E**.

A 20% lighter version of the original color is **FFACC5**, and **B73F5D** is the 20% darker color. If you saturate the color by 10%, you get **F35D7C**, and if you desaturate by 10%, it is **F38DA2**.

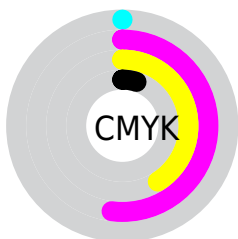
Distribution



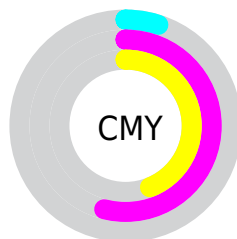
- Red (95%)
- Green (46%)
- Blue (56%)



- Red (95%)
- Yellow (46%)
- Blue (56%)



- Cyan (0%)
- Magenta (52%)
- Yellow (41%)
- Black (5%)



- Cyan (5%)
- Magenta (54%)
- Yellow (44%)

Brightness & Saturation Gradients

These gradients show how the Hex color F3758F changes by changing the brightness by 10 percent. The first figure shows a shift by +10% for each color and the second figure -10%.

Similar to the brightness gradients but the following saturation gradients show a change of the Hex color F3758F by changing the saturation by 10% instead.

 F3758F

 F3758F

FFFFFF

 D55A75

 FFACC5

 B73F5D

 FFC9E1

 9A2146

 FFE5FD

 7D002F

 60001B

 450000

 290001

 000000

 F3758F

 F3758F

 F35D7C

 F38DA2

 F34468

 F3A6B6

 F32C55

 F3BEC9

 F31442

 F3D6DC

 F30032

 F3EEEE

 F3FFFF

Harmonies

Analogous

The Analogous color harmony consists of three colors that are next to each other on the color wheel.



E27ABD



F3758F



EB7F64

Triad

The Triadic color harmony groups three colors that are evenly spaced from another and form a triangle on the color wheel.



F3758F



76AB54



00AAF3

Complementary

The Complementary color scheme is a pair of colors which are on the opposite of each other on the color wheel.



F3758F



75F3D9

Split Complementary

Split-complementary colors differ from the complementary color scheme. The scheme consists of three colors, the original color and two neighbors of the complement color.



00B2D8



F3758F



28B27C

Square

The Square scheme is like the rectangle color scheme, but the four colors are evenly spaced on the color wheel.



F3758F



A8A03D



00B4AC



689DF8

Rectangle

The Rectangle color scheme consists of four colors that form a rectangle on the color wheel.



F3758F



DB8A4D



00B4AC



00AEEC

Sweetspot

The Sweet Spot groups the original color and five complimentary colors.



F3758F



FFD6DF



D875F3



80676C



000000



808080

Same Dimension

The Same Dimension uses a secret algorithm to generate beautiful new colors.



F3758F



FF6182



F39975



7A6E71



BA0026



3B000C

Inverse Universe

The Inverse Universe completely reimagines the original color for something new.



F3758F



FF6182



75CFF3



7A6E71



BA0026



3B000C

Previews

White Background



This preview shows how the Hex color F3758F looks on a white background.

Color Contrast Check

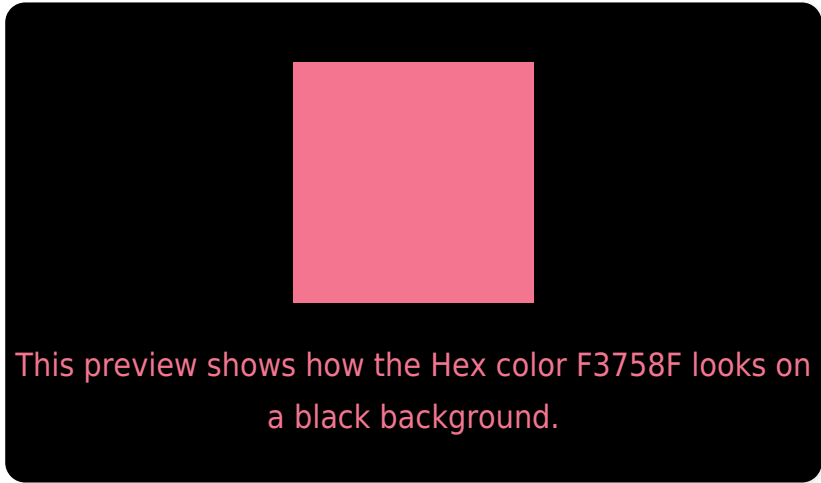
Large Text (above 18pt) WCAG AA × Fail

Any Text WCAG AA × Fail

Large Text (above 18pt) WCAG AAA × Fail

Any Text WCAG AAA × Fail

Black Background



Color Contrast Check

Large Text (above 18pt) WCAG AA ✓ Pass

Any Text WCAG AA ✓ Pass

Large Text (above 18pt) WCAG AAA ✓ Pass

Any Text WCAG AAA ✓ Pass

If you want to check with other color combinations, try the [Color Contrast Checker](#).

Hex F3758F Background



This preview shows how black text looks on a background with the Hex color F3758F.

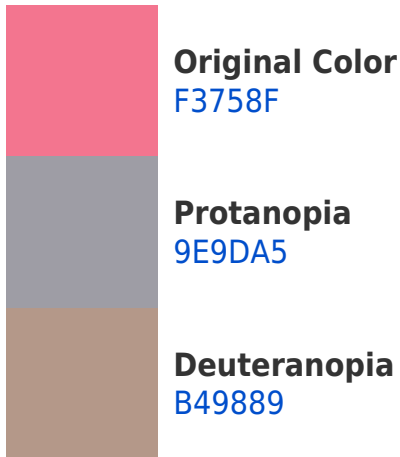


This preview shows how white text looks on a background with the Hex color F3758F.

Color Blindness Simulation

Color vision deficiency is a very complex topic, and I could not describe the different causes any better than Wikipedia does, so if you want to learn more, you should check out their [article about color blindness](#).

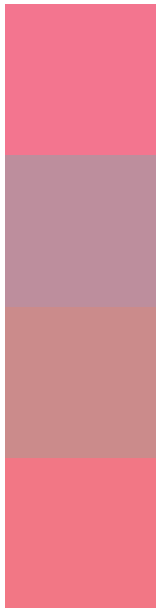
Dichromacy





Tritanopia
F27880

Trichromacy



Original Color
F3758F

Protanomaly
BD8E9D

Deuteranomaly
CB8B8B

Tritanomaly
F27785

Monochromacy



Original Color
F3758F

Achromatopsia
9E9E9E

Achromatomaly
BD8F99

CSS Examples

Text

The CSS property to change the color of the text to Hex F3758F is called "color". The color property can be set on classes, ids or directly on the HTML element.

This example shows how text in the color #F3758F looks like.

```
.text, #text, p{  
    color:#F3758F  
}
```

If you want to add a text shadow in that color use the text-shadow property, you can generate a text shadow directly with our [CSS Text Shadow Generator](#).

Here you see how black text with a 4 pixel #F3758F colored shadow looks like.

```
.shadow{ text-shadow: 4px 4px 2px #F3758F
}
```

Border

The CSS property to change the border of an element to Hex F3758F is called "border". The border property can be set on classes, ids or directly on the HTML element.

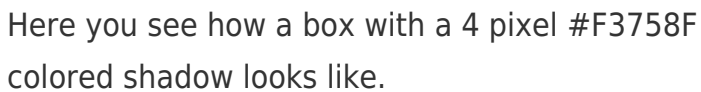
This example shows the color as border, it can be applied via the CSS property "border" or "border-color".

```
.border, #border, table{ border:4px solid
#F3758F }
```

If only the border color should be changed use the property `border-color`.

```
.border{ border-color:#F3758F }
```

If you want to add a box shadow in that color use:



Here you see how a box with a 4 pixel #F3758F colored shadow looks like.

```
.boxshadow{ -moz-box-shadow:4px 4px 4px  
4px #F3758F; -webkit-box-shadow:4px 4px  
4px 4px #F3758F; box-shadow:4px 4px 4px  
4px #F3758F }
```

Background

The CSS property to change the background color of an element to Hex F3758F is called "background". The background property can be set on classes, ids or directly on the HTML element.

```
.background, #background, body{  
background:#F3758F }
```

If only the background color should be changed can be used:

```
.background{ background-color:#F3758F }
```

This example shows the color as background, it is applied via the CSS property "background".

To optimize and compress your CSS code, you can use our [online CSS compressor and optimizer](#) based on csstidy. If you want to create a linear or radial gradient as background or border, check our [CSS Gradient Generator](#).

Hey! You found this booklet interesting? Support Converting Colors with the new Membership Option!

The pro membership hides all ads, plus gives you double the colors in the color bucket, and more awesome pro features!

[Learn more, Memberships starting at \\$2.50/m!](#)

**Follow me
on Twitter!**

@ConvertingColor