

Converting Colors

Hex(F37893)

Have a look what the booklet for
Hex(F37893) contains.

Hex(F37893)	3
<i>Conversions</i>	4
<i>Details</i>	6
<i>Harmonies</i>	11
<i>Previews</i>	23
<i>Color Blindness Simulation</i>	26
<i>CSS Examples</i>	29

Color

Hex(F37893)

Conversions

Conversions Part 1

Format	Color
Hex	F37893
RGB	243, 120, 147
RGB Percent	95%, 47%, 58%
CMY	0.0471, 0.5294, 0.4235
CMYK	0.00, 0.51, 0.40, 0.05
HSL	347°, 84%, 71%
HSV	347°, 51%, 95%
XYZ	48.9451, 34.5942, 31.7014
YIQ	159.8550, 64.6410, 34.4730

Conversions

Conversions Part 2

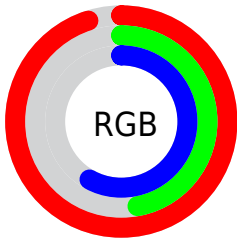
Format	Color
R_{YB}	243, 120, 147
Decimal	15956115
CIE _{Lab}	65.43, 49.77, 7.84
CIE _{LCh}	65, 50.385, 8.954
Yxy	34.5942, 0.4247, 0.3002
Android (android.graphics.Color)	4294146195 (0xFFFF37893)
YUV	159.8550, -6.3375, 72.9182
Hunter-Lab	58.8168, 45.6112, 9.2153

Details

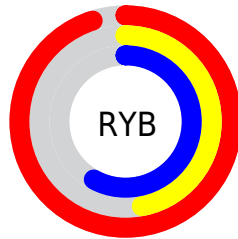
The Hex color **F37893** is a light color, and the websafe version is hex **FF6699**. A complement of this color would be **78F3D8**, and the grayscale version is **A0A0A0**.

A 20% lighter version of the original color is **FFAFC9**, and **B74261** is the 20% darker color. If you saturate the color by 10%, you get **F36080**, and if you desaturate by 10%, it is **F390A6**.

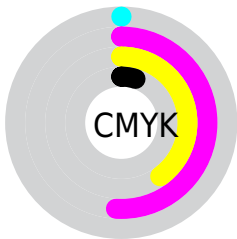
Distribution



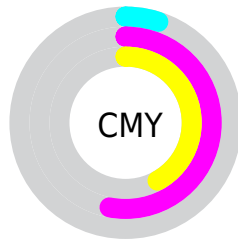
- Red (95%)
- Green (47%)
- Blue (58%)



- Red (95%)
- Yellow (47%)
- Blue (58%)



- Cyan (0%)
- Magenta (51%)
- Yellow (40%)
- Black (5%)



- Cyan (5%)
- Magenta (53%)
- Yellow (42%)

Brightness & Saturation Gradients

These gradients show how the Hex color F37893 changes by changing the brightness by 10 percent. The first figure shows a shift by +10% for each color and the second figure -10%.

Similar to the brightness gradients but the following saturation gradients show a change of the Hex color F37893 by changing the saturation by 10% instead.

 F37893

 F37893

FFFFFF

 D55D79

 FFAFC9

 B74261

 FFCCE5

 9A2649

 FFE8FF

 7D0033

 61001E

 460004

 2B0001

 000000

 F37893

 F37893

 F36080

 F390A6

 F3476D

 F3A9B9

 F32F5A

 F3C1CC

 F31747

 F3D9DF

 F30035

 F3F1F2

 F3FFFF

Harmonies

Analogous

The Analogous color harmony consists of three colors that are next to each other on the color wheel.



E17EC0



F37893



ED8168

Triad

The Triadic color harmony groups three colors that are evenly spaced from another and form a triangle on the color wheel.



F37893



7CAC56



00ACF3

Complementary

The Complementary color scheme is a pair of colors which are on the opposite of each other on the color wheel.



F37893



78F3D8

Split Complementary

Split-complementary colors differ from the complementary color scheme. The scheme consists of three colors, the original color and two neighbors of the complement color.



00B4D6



F37893



35B37D

Square

The Square scheme is like the rectangle color scheme, but the four colors are evenly spaced on the color wheel.



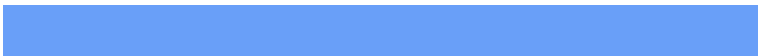
F37893



ACA141



00B6AB



699FF8

Rectangle

The Rectangle color scheme consists of four colors that form a rectangle on the color wheel.



F37893



DD8B52



00B6AB



00AFEB

Sweetspot

The Sweet Spot groups the original color and five complimentary colors.



F37893



FFD9E1



D678F3



80696E



000000



808080

Same Dimension

The Same Dimension uses a secret algorithm to generate beautiful new colors.



F37893



FF6386



F39978



7A6E71



BA0029



3B000D

Inverse Universe

The Inverse Universe completely reimagines the original color for something new.



F37893



FF6386



78D2F3



7A6E71



BA0029



3B000D

Previews

White Background



This preview shows how the Hex color F37893 looks on a white background.

Color Contrast Check

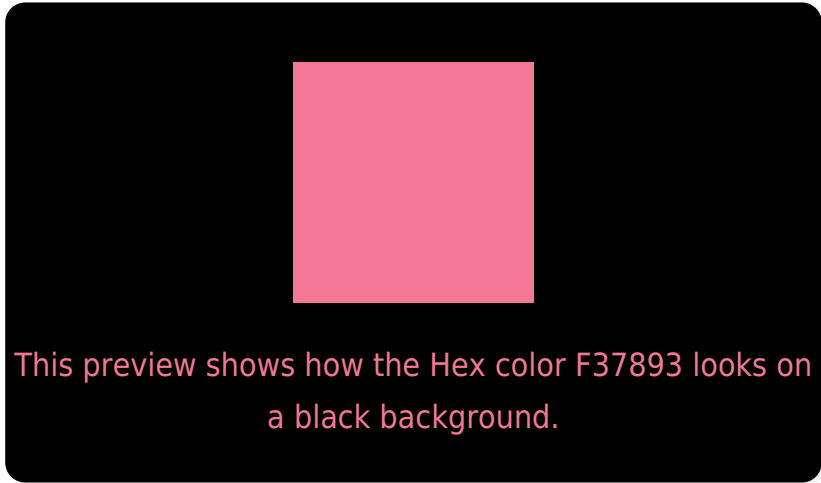
Large Text (above 18pt) WCAG AA × Fail

Any Text WCAG AA × Fail

Large Text (above 18pt) WCAG AAA × Fail

Any Text WCAG AAA × Fail

Black Background



Color Contrast Check

Large Text (above 18pt) WCAG AA ✓ Pass

Any Text WCAG AA ✓ Pass

Large Text (above 18pt) WCAG AAA ✓ Pass

Any Text WCAG AAA ✓ Pass

If you want to check with other color combinations, try the [Color Contrast Checker](#).

Hex F37893 Background



This preview shows how black text looks on a background with the Hex color F37893.

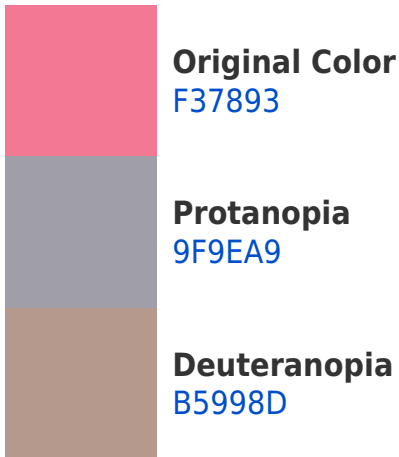


This preview shows how white text looks on a background with the Hex color F37893.

Color Blindness Simulation

Color vision deficiency is a very complex topic, and I could not describe the different causes any better than Wikipedia does, so if you want to learn more, you should check out their [article about color blindness](#).

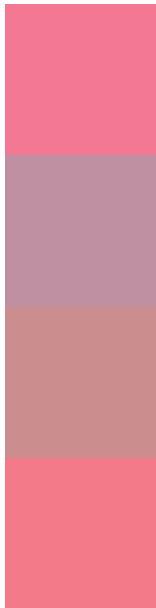
Dichromacy





Tritanopia
F27B83

Trichromacy



Original Color
F37893

Protanomaly
BE90A1

Deuteranomaly
CC8D8F

Tritanomaly
F27A89

Monochromacy



Original Color
F37893

Achromatopsia
A0A0A0

Achromatomaly
BE919B

CSS Examples

Text

The CSS property to change the color of the text to Hex F37893 is called "color". The color property can be set on classes, ids or directly on the HTML element.

This example shows how text in the color #F37893 looks like.

```
.text, #text, p{  
    color:#F37893  
}
```

If you want to add a text shadow in that color use the text-shadow property, you can generate a text shadow directly with our [CSS Text Shadow Generator](#).

Here you see how black text with a 4 pixel #F37893 colored shadow looks like.

```
.shadow{ text-shadow: 4px 4px 2px #F37893
}
```

Border

The CSS property to change the border of an element to Hex F37893 is called "border". The border property can be set on classes, ids or directly on the HTML element.

This example shows the color as border, it can be applied via the CSS property "border" or "border-color".

```
.border, #border, table{ border:4px solid
#F37893 }
```

If only the border color should be changed use the property `border-color`.

```
.border{ border-color:#F37893 }
```

If you want to add a box shadow in that color use:

Here you see how a box with a 4 pixel #F37893 colored shadow looks like.

```
.boxshadow{ -moz-box-shadow:4px 4px 4px  
4px #F37893; -webkit-box-shadow:4px 4px  
4px 4px #F37893; box-shadow:4px 4px 4px  
4px #F37893 }
```

Background

The CSS property to change the background color of an element to Hex F37893 is called "background". The background property can be set on classes, ids or directly on the HTML element.

```
.background, #background, body{  
background:#F37893 }
```

If only the background color should be changed can be used:

```
.background{ background-color:#F37893 }
```

This example shows the color as background, it is applied via the CSS property "background".

To optimize and compress your CSS code, you can use our [online CSS compressor and optimizer](#) based on csstidy. If you want to create a linear or radial gradient as background or border, check our [CSS Gradient Generator](#).

Hey! You found this booklet interesting? Support Converting Colors with the new Membership Option!

The pro membership hides all ads, plus gives you double the colors in the color bucket, and more awesome pro features!

[Learn more, Memberships starting at \\$2.50/m!](#)

**Follow me
on Twitter!**

@ConvertingColor