

Converting Colors

Hex(F38849)

Have a look what the booklet for
Hex(F38849) contains.

Hex(F38849)	3
<i>Conversions</i>	4
<i>Details</i>	6
<i>Harmonies</i>	11
<i>Previews</i>	23
<i>Color Blindness Simulation</i>	26
<i>CSS Examples</i>	29

Color

Hex(F38849)

Conversions

Conversions Part 1

Format	Color
Hex	F38849
RGB	243, 136, 73
RGB Percent	95%, 53%, 29%
CMY	0.0471, 0.4667, 0.7137
CMYK	0.00, 0.44, 0.70, 0.05
HSL	22°, 88%, 62%
HSV	22°, 70%, 95%
XYZ	46.9689, 37.1440, 10.9973
YIQ	160.8110, 83.9950, 3.0910

Conversions

Conversions Part 2

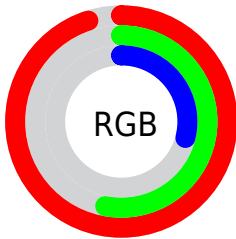
Format	Color
R _Y B	243, 173, 73
Decimal	15960137
CIE Lab	67.38, 35.88, 50.63
CIE LCh	67, 62.053, 54.672
Yxy	37.1440, 0.4938, 0.3905
Android (android.graphics.Color)	4294150217 (0xFFFF38849)
YUV	160.8110, -43.2908, 72.0798
Hunter-Lab	60.9459, 30.9084, 31.9636

Details

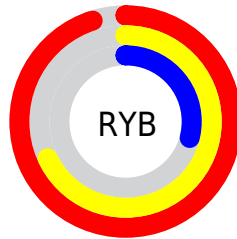
The Hex color **F38849** is a light color, and the websafe version is hex **FF9966**. The color can be described as light washed orange. A complement of this color would be **49B4F3**, and the grayscale version is **A1A1A1**.

A 20% lighter version of the original color is **FFBE7C**, and **B55416** is the 20% darker color. If you saturate the color by 10%, you get **F37931**, and if you desaturate by 10%, it is **F39761**.

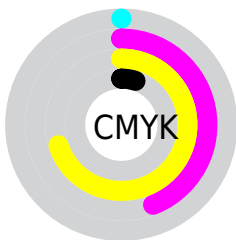
Distribution



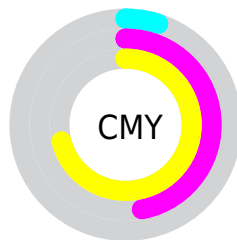
- Red (95%)
- Green (53%)
- Blue (29%)



- Red (95%)
- Yellow (68%)
- Blue (29%)



- Cyan (0%)
- Magenta (44%)
- Yellow (70%)
- Black (5%)



- Cyan (5%)
- Magenta (47%)
- Yellow (71%)

Brightness & Saturation Gradients

These gradients show how the Hex color F38849 changes by changing the brightness by 10 percent. The first figure shows a shift by +10% for each color and the second figure -10%.

Similar to the brightness gradients but the following saturation gradients show a change of the Hex color F38849 by changing the saturation by 10% instead.

 F38849

 F38849

FFFFFF

 D46E30

 FFBE7C

 B55416

 FFDB97

 973C00

 FFF7B2

 792300

 FFFFCE

 5C0600

 FFFFEA

 3F0000

 260001

 000000

 F38849

 F38849

 F37931

 F39761

 F36918

 F3A77A

 F35A00

 F3B692

 F3C5AA

 F3D4C2

 F3E4DB

 F3F3F3

 F3FFFF

Harmonies

Analogous

The Analogous color harmony consists of three colors that are next to each other on the color wheel.



FF7579



F38849



CA9E2B

Triad

The Triadic color harmony groups three colors that are evenly spaced from another and form a triangle on the color wheel.



F38849



00BE98



9499FF

Complementary

The Complementary color scheme is a pair of colors which are on the opposite of each other on the color wheel.



F38849



49B4F3

Split Complementary

Split-complementary colors differ from the complementary color scheme. The scheme consists of three colors, the original color and two neighbors of the complement color.



00ADFF



F38849



00BFD1

Square

The Square scheme is like the rectangle color scheme, but the four colors are evenly spaced on the color wheel.



F38849



4AB960



00BAFE



DF82E6

Rectangle

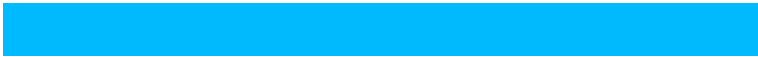
The Rectangle color scheme consists of four colors that form a rectangle on the color wheel.



F38849



A8AA2D



00BAFE



6EA1FF

Sweetspot

The Sweet Spot groups the original color and five complimentary colors.



F38849



FFDDC9



F349B5



806B60



000000



808080

Same Dimension

The Same Dimension uses a secret algorithm to generate beautiful new colors.



F38849



FF7829



F3DC49



7A736E



BA4500



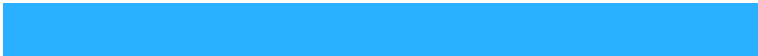
3B1600

Inverse Universe

The Inverse Universe completely reimagines the original color for something new.



49B4F3



29B0FF



4960F3



6E767A



0075BA



00253B

Previews

White Background



This preview shows how the Hex color F38849 looks on a white background.

Color Contrast Check

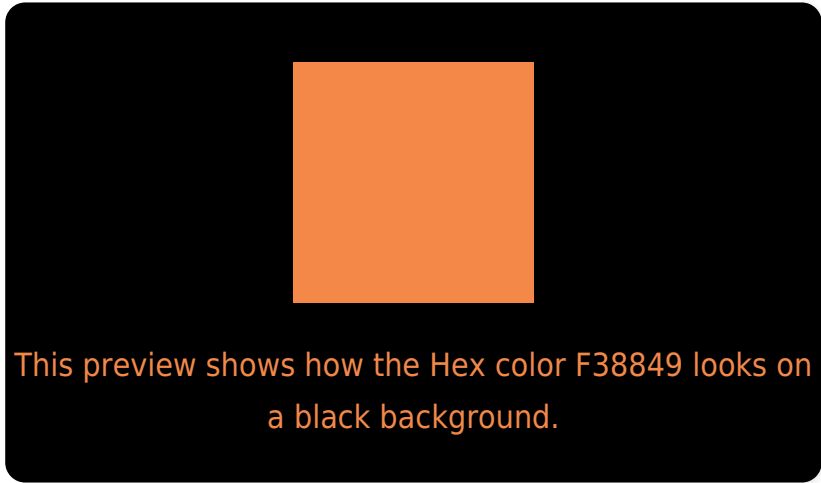
Large Text (above 18pt) WCAG AA × Fail

Any Text WCAG AA × Fail

Large Text (above 18pt) WCAG AAA × Fail

Any Text WCAG AAA × Fail

Black Background



Color Contrast Check

Large Text (above 18pt) WCAG AA ✓ Pass

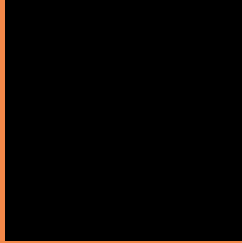
Any Text WCAG AA ✓ Pass

Large Text (above 18pt) WCAG AAA ✓ Pass

Any Text WCAG AAA ✓ Pass

If you want to check with other color combinations, try the [Color Contrast Checker](#).

Hex F38849 Background



This preview shows how black text looks on a background with the Hex color F38849.



This preview shows how white text looks on a background with the Hex color F38849.

Color Blindness Simulation

Color vision deficiency is a very complex topic, and I could not describe the different causes any better than Wikipedia does, so if you want to learn more, you should check out their [article about color blindness](#).

Dichromacy



Original Color
F38849

Protanopia
B6A552

Deuteranopia
CC9C44



Tritanopia
F7818A

Trichromacy



Original Color
F38849



Protanomaly
CC9A4F



Deuteranomaly
DA9546

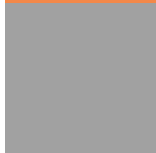


Tritanomaly
F68472

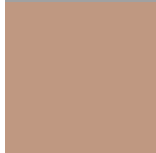
Monochromacy



Original Color
F38849



Achromatopsia
A1A1A1



Achromatomaly
BF9881

CSS Examples

Text

The CSS property to change the color of the text to Hex F38849 is called "color". The color property can be set on classes, ids or directly on the HTML element.

This example shows how text in the color #F38849 looks like.

```
.text, #text, p{  
    color:#F38849  
}
```

If you want to add a text shadow in that color use the text-shadow property, you can generate a text shadow directly with our [CSS Text Shadow Generator](#).

Here you see how black text with a 4 pixel #F38849 colored shadow looks like.

```
.shadow{ text-shadow: 4px 4px 2px #F38849
}
```

Border

The CSS property to change the border of an element to Hex F38849 is called "border". The border property can be set on classes, ids or directly on the HTML element.

This example shows the color as border, it can be applied via the CSS property "border" or "border-color".

```
.border, #border, table{ border:4px solid
#F38849 }
```

If only the border color should be changed use the property `border-color`.

```
.border{ border-color:#F38849 }
```

If you want to add a box shadow in that color use:

Here you see how a box with a 4 pixel #F38849 colored shadow looks like.

```
.boxshadow{ -moz-box-shadow:4px 4px 4px  
4px #F38849; -webkit-box-shadow:4px 4px  
4px 4px #F38849; box-shadow:4px 4px 4px  
4px #F38849 }
```

Background

The CSS property to change the background color of an element to Hex F38849 is called "background". The background property can be set on classes, ids or directly on the HTML element.

```
.background, #background, body{  
background:#F38849 }
```

If only the background color should be changed can be used:

```
.background{ background-color:#F38849 }
```

This example shows the color as background, it is applied via the CSS property "background".

To optimize and compress your CSS code, you can use our [online CSS compressor and optimizer](#) based on csstidy. If you want to create a linear or radial gradient as background or border, check our [CSS Gradient Generator](#).

Hey! You found this booklet interesting? Support Converting Colors with the new Membership Option!

The pro membership hides all ads, plus gives you double the colors in the color bucket, and more awesome pro features!

[Learn more, Memberships starting at \\$2.50/m!](#)

**Follow me
on Twitter!**

@ConvertingColor