

Converting Colors

Hex(F3A19F)

Have a look what the booklet for
Hex(F3A19F) contains.

Hex(F3A19F)	3
<i>Conversions</i>	4
<i>Details</i>	6
<i>Harmonies</i>	11
<i>Previews</i>	23
<i>Color Blindness Simulation</i>	26
<i>CSS Examples</i>	29

Color

Hex(F3A19F)

Conversions

Conversions Part 1

Format	Color
Hex	F3A19F
RGB	243, 161, 159
RGB Percent	95%, 63%, 62%
CMY	0.0471, 0.3686, 0.3765
CMYK	0.00, 0.34, 0.35, 0.05
HSL	1°, 78%, 79%
HSV	1°, 35%, 95%
XYZ	55.9650, 47.0476, 38.9323
YIQ	185.2900, 49.5140, 16.7620

Conversions

Conversions Part 2

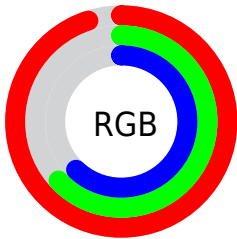
Format	Color
R _Y B	243, 161, 159
Decimal	15966623
CIE Lab	74.22, 30.20, 13.60
CIE LCh	74, 33.119, 24.242
Yxy	47.0476, 0.3943, 0.3314
Android (android.graphics.Color)	4294156703 (0xFFFF3A19F)
YUV	185.2900, -12.9610, 50.6117
Hunter-Lab	68.5913, 25.6071, 14.3610

Details

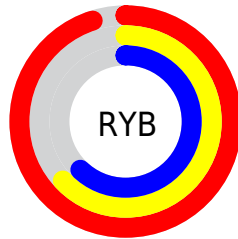
The Hex color **F3A19F** is a light color, and the websafe version is hex **FF9999**. A complement of this color would be **9FF1F3**, and the grayscale version is **B9B9B9**.

A 20% lighter version of the original color is **FFD8D6**, and **B96C6C** is the 20% darker color. If you saturate the color by 10%, you get **F38987**, and if you desaturate by 10%, it is **F3B9B7**.

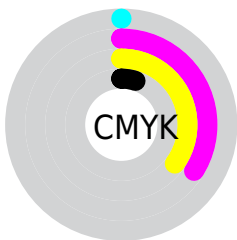
Distribution



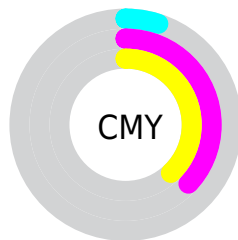
- Red (95%)
- Green (63%)
- Blue (62%)



- Red (95%)
- Yellow (63%)
- Blue (62%)



- Cyan (0%)
- Magenta (34%)
- Yellow (35%)
- Black (5%)



- Cyan (5%)
- Magenta (37%)
- Yellow (38%)

Brightness & Saturation Gradients

These gradients show how the Hex color F3A19F changes by changing the brightness by 10 percent. The first figure shows a shift by +10% for each color and the second figure -10%.

Similar to the brightness gradients but the following saturation gradients show a change of the Hex color F3A19F by changing the saturation by 10% instead.

 F3A19F

 F3A19F

FFFFFF

 D68685

 FFD8D6

 B96C6C

 FFF5F2

 9C5353

 813B3C

 662327

 4B0A12

 330000

 0D0000

 000000

 F3A19F

 F3A19F

 F38987

 F3B9B7

 F3726E

 F3D0D0

 F35A56

 F3E8E8

 F3423E

 F3FFFF

 F32A26

 F3130D

 F30600

Harmonies

Analogous

The Analogous color harmony consists of three colors that are next to each other on the color wheel.



EEA0BE



F3A19F



E8A886

Triad

The Triadic color harmony groups three colors that are evenly spaced from another and form a triangle on the color wheel.



F3A19F



8FC392



85BBF2

Complementary

The Complementary color scheme is a pair of colors which are on the opposite of each other on the color wheel.



F3A19F



9FF1F3

Split Complementary

Split-complementary colors differ from the complementary color scheme. The scheme consists of three colors, the original color and two neighbors of the complement color.



5CC3E7



F3A19F



6BC7AF

Square

The Square scheme is like the rectangle color scheme, but the four colors are evenly spaced on the color wheel.



F3A19F



B2BC7E



52C7CE



B3B1EE

Rectangle

The Rectangle color scheme consists of four colors that form a rectangle on the color wheel.



F3A19F



DAAF7C



52C7CE



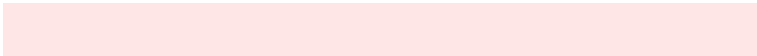
76BEF0

Sweetspot

The Sweet Spot groups the original color and five complimentary colors.



F3A19F



FFE6E6



F39FF2



807170



000000



808080

Same Dimension

The Same Dimension uses a secret algorithm to generate beautiful new colors.



F3A19F



FF9996



F3CA9F



7A6E6E



BA0400



3B0100

Inverse Universe

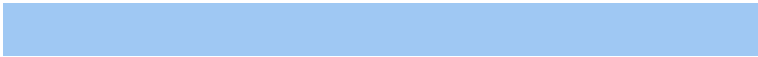
The Inverse Universe completely reimagines the original color for something new.



9FF1F3



96DFF



9FC8F3



6E7A7A



00B6BA



00393B

Previews

White Background



This preview shows how the Hex color F3A19F looks on a white background.

Color Contrast Check

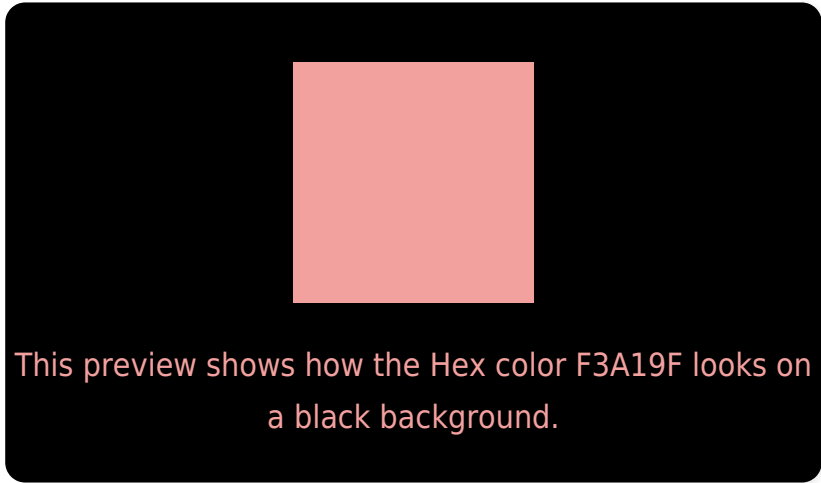
Large Text (above 18pt) WCAG AA × Fail

Any Text WCAG AA × Fail

Large Text (above 18pt) WCAG AAA × Fail

Any Text WCAG AAA × Fail

Black Background



Color Contrast Check

Large Text (above 18pt) WCAG AA ✓ Pass

Any Text WCAG AA ✓ Pass

Large Text (above 18pt) WCAG AAA ✓ Pass

Any Text WCAG AAA ✓ Pass

If you want to check with other color combinations, try the [Color Contrast Checker](#).

Hex F3A19F Background



This preview shows how black text looks on a background with the Hex color F3A19F.

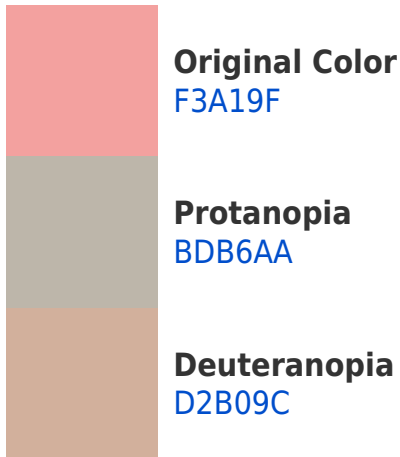


This preview shows how white text looks on a background with the Hex color F3A19F.

Color Blindness Simulation

Color vision deficiency is a very complex topic, and I could not describe the different causes any better than Wikipedia does, so if you want to learn more, you should check out their [article about color blindness](#).

Dichromacy



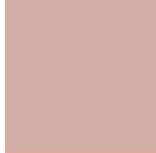


Tritanopia
F49FAB

Trichromacy



Original Color
F3A19F



Protanomaly
D1AEA6



Deuteranomaly
DEAB9D



Tritanomaly
F4A0A7

Monochromacy



Original Color
F3A19F



Achromatopsia
B9B9B9



Achromatomaly
CEB0B0

CSS Examples

Text

The CSS property to change the color of the text to Hex F3A19F is called "color". The color property can be set on classes, ids or directly on the HTML element.

This example shows how text in the color #F3A19F looks like.

```
.text, #text, p{  
    color:#F3A19F  
}
```

If you want to add a text shadow in that color use the text-shadow property, you can generate a text shadow directly with our [CSS Text Shadow Generator](#).

Here you see how black text with a 4 pixel #F3A19F colored shadow looks like.

```
.shadow{ text-shadow: 4px 4px 2px #F3A19F
}
```

Border

The CSS property to change the border of an element to Hex F3A19F is called "border". The border property can be set on classes, ids or directly on the HTML element.

This example shows the color as border, it can be applied via the CSS property "border" or "border-color".

```
.border, #border, table{ border:4px solid
#F3A19F }
```

If only the border color should be changed use the property `border-color`.

```
.border{ border-color:#F3A19F }
```

If you want to add a box shadow in that color use:

Here you see how a box with a 4 pixel #F3A19F colored shadow looks like.

```
.boxshadow{ -moz-box-shadow:4px 4px 4px  
4px #F3A19F; -webkit-box-shadow:4px 4px  
4px 4px #F3A19F; box-shadow:4px 4px 4px  
4px #F3A19F }
```

Background

The CSS property to change the background color of an element to Hex F3A19F is called "background". The background property can be set on classes, ids or directly on the HTML element.

```
.background, #background, body{  
background:#F3A19F }
```

If only the background color should be changed can be used:

```
.background{ background-color:#F3A19F }
```

This example shows the color as background, it is applied via the CSS property "background".

To optimize and compress your CSS code, you can use our [online CSS compressor and optimizer](#) based on csstidy. If you want to create a linear or radial gradient as background or border, check our [CSS Gradient Generator](#).

Hey! You found this booklet interesting? Support Converting Colors with the new Membership Option!

The pro membership hides all ads, plus gives you double the colors in the color bucket, and more awesome pro features!

[Learn more, Memberships starting at \\$2.50/m!](#)

**Follow me
on Twitter!**

@ConvertingColor