

# Converting Colors

Hex(F3C2E7)

Have a look what the booklet for  
Hex(F3C2E7) contains.

<b>Hex(F3C2E7)</b> .....	3
<i><b>Conversions</b></i> .....	4
<i><b>Details</b></i> .....	6
<i><b>Harmonies</b></i> .....	11
<i><b>Previews</b></i> .....	23
<i><b>Color Blindness Simulation</b></i> .....	26
<i><b>CSS Examples</b></i> .....	29

# **Color**

**Hex(F3C2E7)**

# Conversions

## Conversions Part 1

Format	Color
Hex	F3C2E7
RGB	243, 194, 231
RGB Percent	95%, 76%, 91%
CMY	0.0471, 0.2392, 0.0941
CMYK	0.00, 0.20, 0.05, 0.05
HSL	315°, 67%, 86%
HSV	315°, 20%, 95%
XYZ	70.6777, 63.4078, 84.1151
YIQ	212.8690, 17.3270, 21.8950

# Conversions

## Conversions Part 2

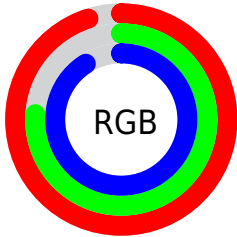
<b>Format</b>	<b>Color</b>
R <sub>Y</sub> B	243, 194, 231
Decimal	15975143
CIE Lab	83.66, 23.43, -11.69
CIE LCh	84, 26.187, 333.482
Yxy	63.4078, 0.3239, 0.2906
Android (android.graphics.Color)	4294165223 (0xFFFF3C2E7)
YUV	212.8690, 8.9386, 26.4249
Hunter-Lab	79.6290, 19.0837, -6.8900

# Details

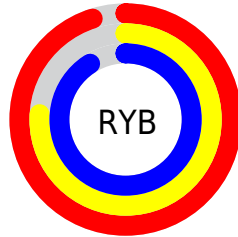
The Hex color **F3C2E7** is a light color, and the websafe version is hex **FFCCFF**. A complement of this color would be **C2F3CE**, and the grayscale version is **D5D5D5**.

A 20% lighter version of the original color is **FFBFF**, and **BA8CAF** is the 20% darker color. If you saturate the color by 10%, you get **F3AAE1**, and if you desaturate by 10%, it is **F3DAED**.

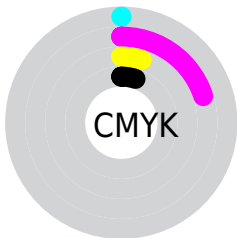
# Distribution



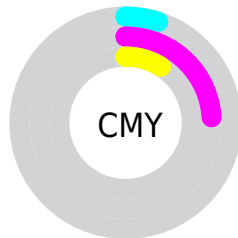
- Red (95%)
- Green (76%)
- Blue (91%)



- Red (95%)
- Yellow (76%)
- Blue (91%)



- Cyan (0%)
- Magenta (20%)
- Yellow (5%)
- Black (5%)



- Cyan (5%)
- Magenta (24%)
- Yellow (9%)

# Brightness & Saturation Gradients

These gradients show how the Hex color F3C2E7 changes by changing the brightness by 10 percent. The first figure shows a shift by +10% for each color and the second figure -10%.

Similar to the brightness gradients but the following saturation gradients show a change of the Hex color F3C2E7 by changing the saturation by 10% instead.



 F3C2E7

FFFFFF

 FFFBFF

 F3C2E7

 D6A7CB

 BA8CAF

 9F7295

 85597B

 6B4262

 522B4A

 3A1534

 25001E

 000002

 F3C2E7

 F3C2E7

 F3AAE1

 F3DAED

 F391DB

 F3F3F3

 F379D5

 F3FFF9

 F361CF

 F3FFFF

 F349C9

 F330C3

 F318BD

 F300B7

# Harmonies

## Analogous

The Analogous color harmony consists of three colors that are next to each other on the color wheel.



D8C9FA



F3C2E7



FFBFCE

# Triad

The Triadic color harmony groups three colors that are evenly spaced from another and form a triangle on the color wheel.



F3C2E7



E0D09F



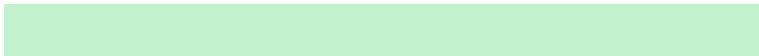
8BDDEB

# Complementary

The Complementary color scheme is a pair of colors which are on the opposite of each other on the color wheel.



F3C2E7



C2F3CE

# Split Complementary

Split-complementary colors differ from the complementary color scheme. The scheme consists of three colors, the original color and two neighbors of the complement color.



92DFD3



F3C2E7



C5D7A7

# Square

The Square scheme is like the rectangle color scheme, but the four colors are evenly spaced on the color wheel.



F3C2E7



F6C8A5



A9DCBA



99D9FC

# Rectangle

The Rectangle color scheme consists of four colors that form a rectangle on the color wheel.



F3C2E7



FFC0BE



A9DCBA



8BDEE3



# Sweetspot

The Sweet Spot groups the original color and five complimentary colors.



F3C2E7



FFF0FB



CDC2F3



80777D



000000



808080



# Same Dimension

The Same Dimension uses a secret algorithm to generate beautiful new colors.



F3C2E7



FFC2F0



F3C2CF



7A6E77



BA008D



3B002C



# Inverse Universe

The Inverse Universe completely reimagines the original color for something new.



F3C2E7



FFC2F0



C2F3E6



7A6E77



BA008D



3B002C



# Previews

## White Background



This preview shows how the Hex color F3C2E7 looks on a white background.

## Color Contrast Check

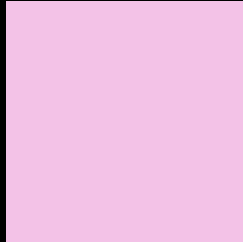
Large Text (above 18pt) WCAG AA × Fail

Any Text WCAG AA × Fail

Large Text (above 18pt) WCAG AAA × Fail

Any Text WCAG AAA × Fail

# Black Background



This preview shows how the Hex color F3C2E7 looks on a black background.

## Color Contrast Check

Large Text (above 18pt) WCAG AA ✓ Pass

Any Text WCAG AA ✓ Pass

Large Text (above 18pt) WCAG AAA ✓ Pass

Any Text WCAG AAA ✓ Pass

If you want to check with other color combinations, try the [Color Contrast Checker](#).



## Hex F3C2E7 Background



This preview shows how black text looks on a background with the Hex color F3C2E7.

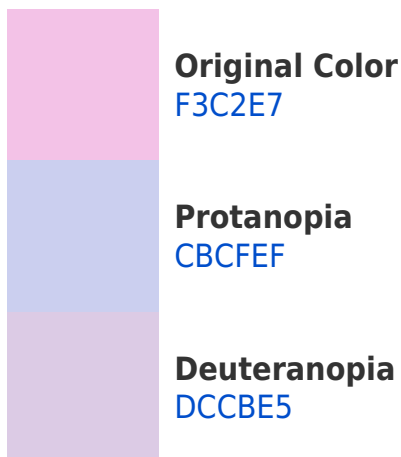


This preview shows how white text looks on a background with the Hex color F3C2E7.

# Color Blindness Simulation

Color vision deficiency is a very complex topic, and I could not describe the different causes any better than Wikipedia does, so if you want to learn more, you should check out their [article about color blindness](#).

## Dichromacy



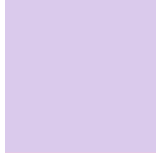


**Tritanopia**  
F0C5D5

# Trichromacy



**Original Color**  
F3C2E7



**Protanomaly**  
DACAEC



**Deuteranomaly**  
E4C8E6

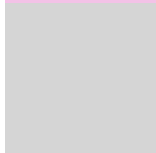


**Tritanomaly**  
F1C4DC

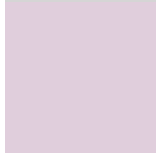
# Monochromacy



**Original Color**  
F3C2E7



**Achromatopsia**  
D5D5D5



**Achromatomaly**  
E0CEDC

# CSS Examples

## Text

The CSS property to change the color of the text to Hex F3C2E7 is called "color". The color property can be set on classes, ids or directly on the HTML element.

This example shows how text in the color #F3C2E7 looks like.

```
.text, #text, p{  
    color:#F3C2E7  
}
```

If you want to add a text shadow in that color use the text-shadow property, you can generate a text shadow directly with our [CSS Text Shadow Generator](#).

Here you see how black text with a 4 pixel #F3C2E7 colored shadow looks like.

```
.shadow{ text-shadow: 4px 4px 2px #F3C2E7
}
```

## Border

The CSS property to change the border of an element to Hex F3C2E7 is called "border". The border property can be set on classes, ids or directly on the HTML element.

This example shows the color as border, it can be applied via the CSS property "border" or "border-color".

```
.border, #border, table{ border:4px solid
#F3C2E7 }
```

If only the border color should be changed use the property border-color.

```
.border{ border-color:#F3C2E7 }
```

If you want to add a box shadow in that color use:

Here you see how a box with a 4 pixel #F3C2E7 colored shadow looks like.

```
.boxshadow{ -moz-box-shadow:4px 4px 4px  
4px #F3C2E7; -webkit-box-shadow:4px 4px  
4px 4px #F3C2E7; box-shadow:4px 4px 4px  
4px #F3C2E7 }
```

# Background

The CSS property to change the background color of an element to Hex F3C2E7 is called "background". The background property can be set on classes, ids or directly on the HTML element.

```
.background, #background, body{  
background:#F3C2E7 }
```

If only the background color should be changed can be used:

```
.background{ background-color:#F3C2E7 }
```

This example shows the color as background, it is applied via the CSS property "background".

To optimize and compress your CSS code, you can use our [online CSS compressor and optimizer](#) based on csstidy. If you want to create a linear or radial gradient as background or border, check our [CSS Gradient Generator](#).



Hey! You found this booklet interesting? Support Converting Colors with the new Membership Option!

The pro membership hides all ads, plus gives you double the colors in the color bucket, and more awesome pro features!

**[Learn more, Memberships starting at \\$2.50/m!](#)**

**Follow me  
on Twitter!**

@ConvertingColor