

Converting Colors

Hex(F3C3E1)

Have a look what the booklet for
Hex(F3C3E1) contains.

Hex(F3C3E1)	3
<i>Conversions</i>	4
<i>Details</i>	6
<i>Harmonies</i>	11
<i>Previews</i>	23
<i>Color Blindness Simulation</i>	26
<i>CSS Examples</i>	29

Color

Hex(F3C3E1)

Conversions

Conversions Part 1

Format	Color
Hex	F3C3E1
RGB	243, 195, 225
RGB Percent	95%, 76%, 88%
CMY	0.0471, 0.2353, 0.1176
CMYK	0.00, 0.20, 0.07, 0.05
HSL	322°, 67%, 86%
HSV	322°, 20%, 95%
XYZ	70.0679, 63.5211, 79.8020
YIQ	212.7720, 18.9780, 19.5060

Conversions

Conversions Part 2

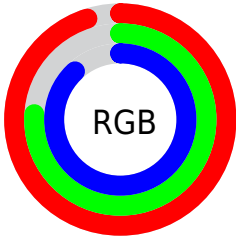
Format	Color
R_{YB}	243, 195, 225
Decimal	15975393
CIE _{Lab}	83.72, 21.87, -8.40
CIE _{LCh}	84, 23.427, 338.994
Yxy	63.5211, 0.3284, 0.2977
Android (android.graphics.Color)	4294165473 (0xFFFF3C3E1)
YUV	212.7720, 6.0284, 26.5100
Hunter-Lab	79.7002, 17.4518, -3.5757

Details

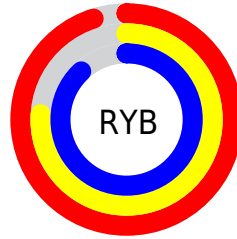
The Hex color **F3C3E1** is a light color, and the websafe version is hex **FFCCFF**. A complement of this color would be **C3F3D5**, and the grayscale version is **D5D5D5**.

A 20% lighter version of the original color is **FFFCFF**, and **BA8DAA** is the 20% darker color. If you saturate the color by 10%, you get **F3ABD8**, and if you desaturate by 10%, it is **F3DBEA**.

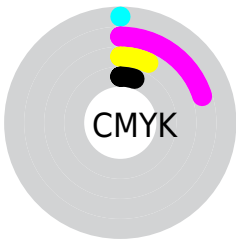
Distribution



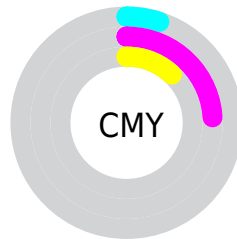
- Red (95%)
- Green (76%)
- Blue (88%)



- Red (95%)
- Yellow (76%)
- Blue (88%)



- Cyan (0%)
- Magenta (20%)
- Yellow (7%)
- Black (5%)



- Cyan (5%)
- Magenta (24%)
- Yellow (12%)

Brightness & Saturation Gradients

These gradients show how the Hex color F3C3E1 changes by changing the brightness by 10 percent. The first figure shows a shift by +10% for each color and the second figure -10%.

Similar to the brightness gradients but the following saturation gradients show a change of the Hex color F3C3E1 by changing the saturation by 10% instead.

 F3C3E1

FFFFFF

 FFFCFF

 F3C3E1

 D6A8C5

 BA8DAA

 9F738F

 855A76

 6B435D

 522C45

 3A162F

 25001A

 000000

 F3C3E1

 F3C3E1

 F3ABD8

 F3DBEA

 F392CF

 F3F4F3

 F37AC6

 F3FFFC

 F362BD

 F3FFFF

 F34AB3

 F331AA

 F319A1

 F30198

 F30098

Harmonies

Analogous

The Analogous color harmony consists of three colors that are next to each other on the color wheel.



DDC9F3



F3C3E1



FEC1CB

Triad

The Triadic color harmony groups three colors that are evenly spaced from another and form a triangle on the color wheel.



F3C3E1



DBD1A5



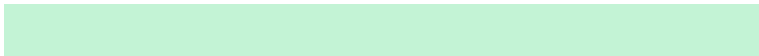
95DCEC

Complementary

The Complementary color scheme is a pair of colors which are on the opposite of each other on the color wheel.



F3C3E1



C3F3D5

Split Complementary

Split-complementary colors differ from the complementary color scheme. The scheme consists of three colors, the original color and two neighbors of the complement color.



98DDD7



F3C3E1



C2D8AE

Square

The Square scheme is like the rectangle color scheme, but the four colors are evenly spaced on the color wheel.



F3C3E1



F0CAA8



AADCC0



A4D7F9

Rectangle

The Rectangle color scheme consists of four colors that form a rectangle on the color wheel.



F3C3E1



FEC2BC



AADCC0



94DDE5

Sweetspot

The Sweet Spot groups the original color and five complimentary colors.



F3C3E1



FFF0F9



D5C3F3



80777C



000000



808080

Same Dimension

The Same Dimension uses a secret algorithm to generate beautiful new colors.



F3C3E1



FFC2E8



F3C3C9



7A6E76



BA0074



3B0025

Inverse Universe

The Inverse Universe completely reimagines the original color for something new.



F3C3E1



FFC2E8



C3F3ED



7A6E76



BA0074



3B0025

Previews

White Background



This preview shows how the Hex color F3C3E1 looks on a white background.

Color Contrast Check

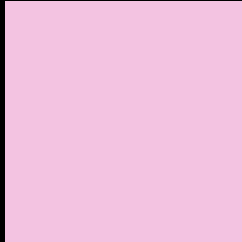
Large Text (above 18pt) WCAG AA × Fail

Any Text WCAG AA × Fail

Large Text (above 18pt) WCAG AAA × Fail

Any Text WCAG AAA × Fail

Black Background



This preview shows how the Hex color F3C3E1 looks on a black background.

Color Contrast Check

Large Text (above 18pt) WCAG AA ✓ Pass

Any Text WCAG AA ✓ Pass

Large Text (above 18pt) WCAG AAA ✓ Pass

Any Text WCAG AAA ✓ Pass

If you want to check with other color combinations, try the [Color Contrast Checker](#).

Hex F3C3E1 Background



This preview shows how black text looks on a background with the Hex color F3C3E1.



This preview shows how white text looks on a background with the Hex color F3C3E1.

Color Blindness Simulation

Color vision deficiency is a very complex topic, and I could not describe the different causes any better than Wikipedia does, so if you want to learn more, you should check out their [article about color blindness](#).

Dichromacy



Original Color
F3C3E1

Protanopia
CECFE9

Deuteranopia
DFC8DF

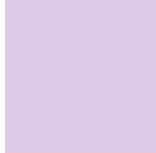


Tritanopia
F1C5D4

Trichromacy



Original Color
F3C3E1



Protanomaly
DBCBE6



Deuteranomaly
E6C8E0

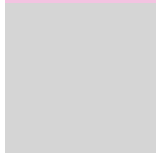


Tritanomaly
F2C4D9

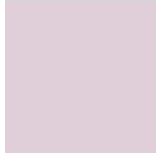
Monochromacy



Original Color
F3C3E1



Achromatopsia
D5D5D5



Achromatomaly
E0CED9

CSS Examples

Text

The CSS property to change the color of the text to Hex F3C3E1 is called "color". The color property can be set on classes, ids or directly on the HTML element.

This example shows how text in the color #F3C3E1 looks like.

```
.text, #text, p{  
    color:#F3C3E1  
}
```

If you want to add a text shadow in that color use the text-shadow property, you can generate a text shadow directly with our [CSS Text Shadow Generator](#).

Here you see how black text with a 4 pixel #F3C3E1 colored shadow looks like.

```
.shadow{ text-shadow: 4px 4px 2px #F3C3E1
}
```

Border

The CSS property to change the border of an element to Hex F3C3E1 is called "border". The border property can be set on classes, ids or directly on the HTML element.

This example shows the color as border, it can be applied via the CSS property "border" or "border-color".

```
.border, #border, table{ border:4px solid
#F3C3E1 }
```

If only the border color should be changed use the property `border-color`.

```
.border{ border-color:#F3C3E1 }
```

If you want to add a box shadow in that color use:

Here you see how a box with a 4 pixel #F3C3E1 colored shadow looks like.

```
.boxshadow{ -moz-box-shadow:4px 4px 4px  
4px #F3C3E1; -webkit-box-shadow:4px 4px  
4px 4px #F3C3E1; box-shadow:4px 4px 4px  
4px #F3C3E1 }
```

Background

The CSS property to change the background color of an element to Hex F3C3E1 is called "background". The background property can be set on classes, ids or directly on the HTML element.

```
.background, #background, body{  
background:#F3C3E1 }
```

If only the background color should be changed can be used:

```
.background{ background-color:#F3C3E1 }
```

This example shows the color as background, it is applied via the CSS property "background".

To optimize and compress your CSS code, you can use our [online CSS compressor and optimizer](#) based on csstidy. If you want to create a linear or radial gradient as background or border, check our [CSS Gradient Generator](#).

Hey! You found this booklet interesting? Support Converting Colors with the new Membership Option!

The pro membership hides all ads, plus gives you double the colors in the color bucket, and more awesome pro features!

[Learn more, Memberships starting at \\$2.50/m!](#)

**Follow me
on Twitter!**

@ConvertingColor